

INNOVATIVE

INV-ES-FF-ET-TAH21-BOXMNT

INSTALL INSTRUCTIONS

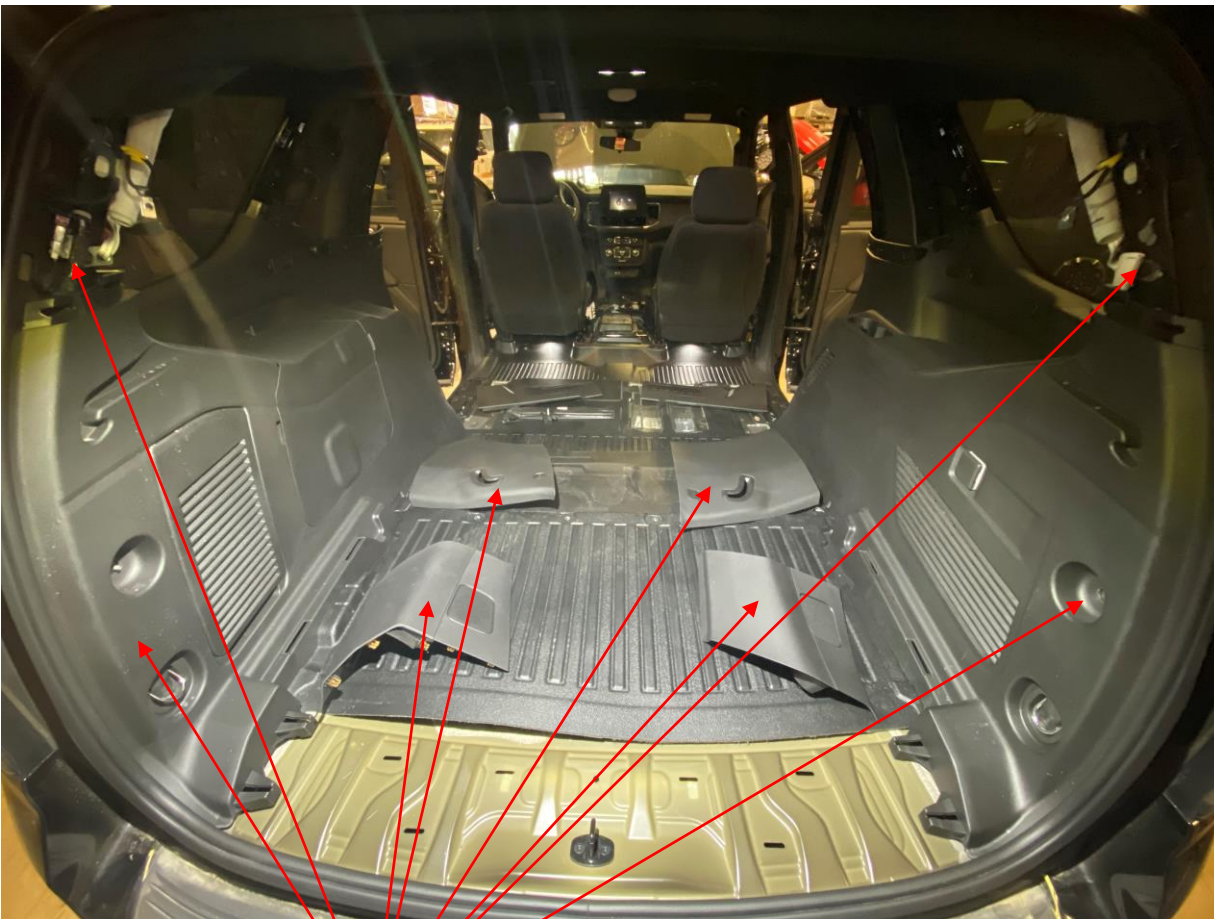
EMERGENCY EQUIPMENT



REMOVE LOWER TRIM IN
REAR OF VEHICLE



EMERGENCY EQUIPMENT



REMOVE C & D PILLAR TRIM FROM VEHICLE

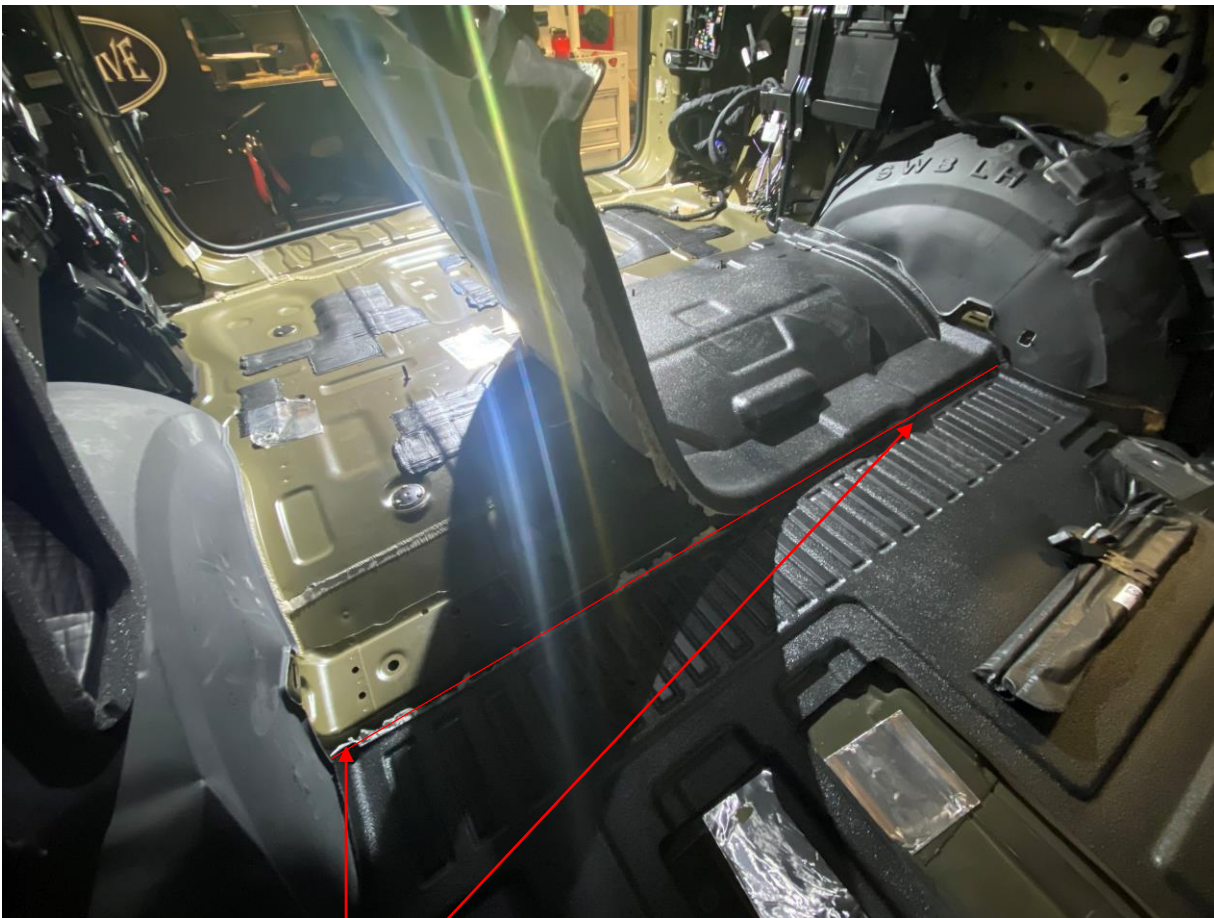
REMOVE REAR CARGO TRIM FROM VEHICLE



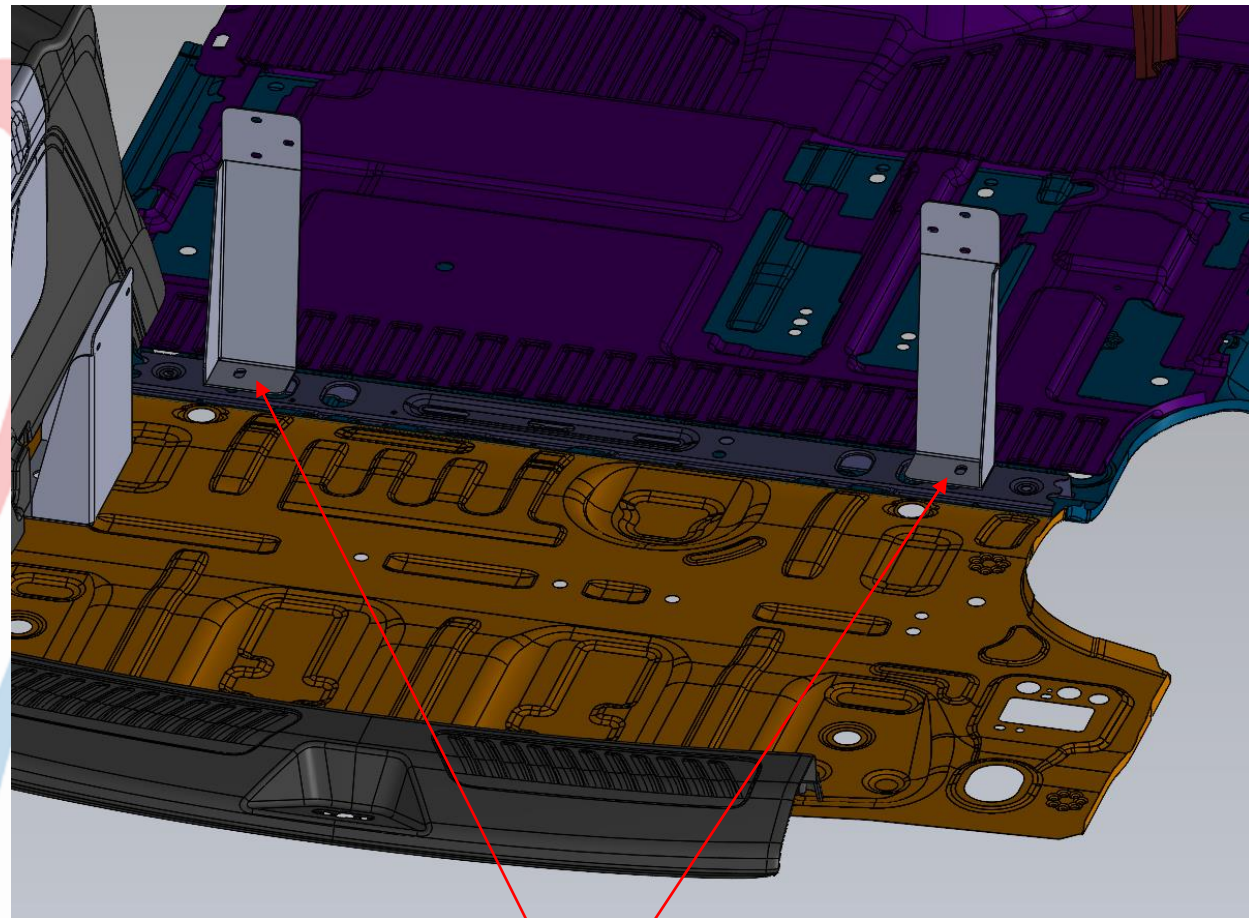
REMOVE REAR FLOOR MAT

UTILITZE THIS TIME TO RUN ANY LIGHTING /
CABLES, AS ONCE THE FLOOR IS IN THE TRIM WILL
NO LONGER BE REMOVABLE WITHOUT REMOVAL.

EMERGENCY EQUIPMENT

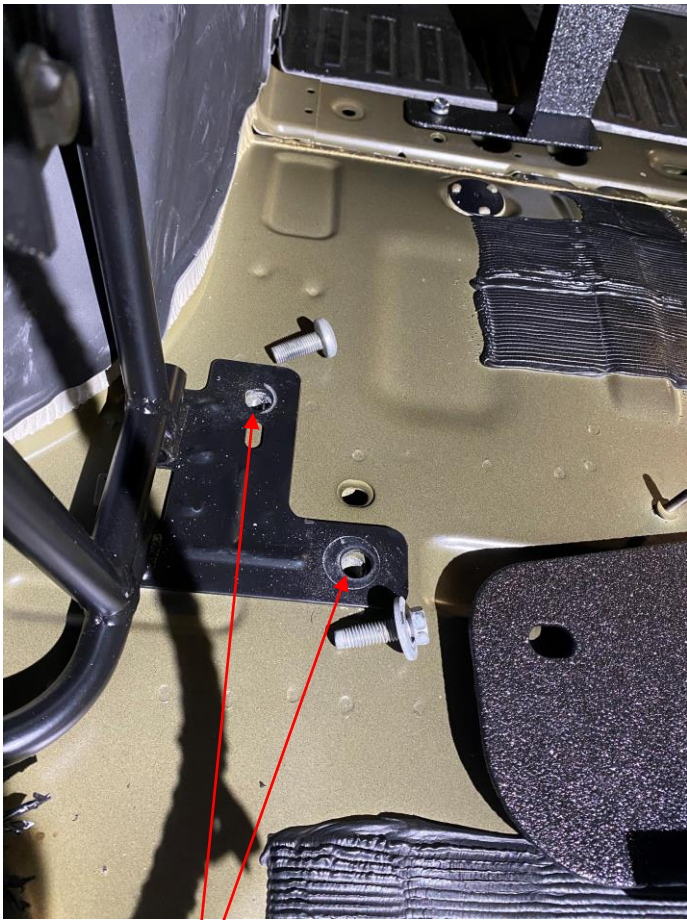


USE A UTILITY KNIFE TO CUT ALONG THE FLOOR MAT ON THE 3RD ROW SEAT RAIL. REMOVE TRIMMED PIECE.

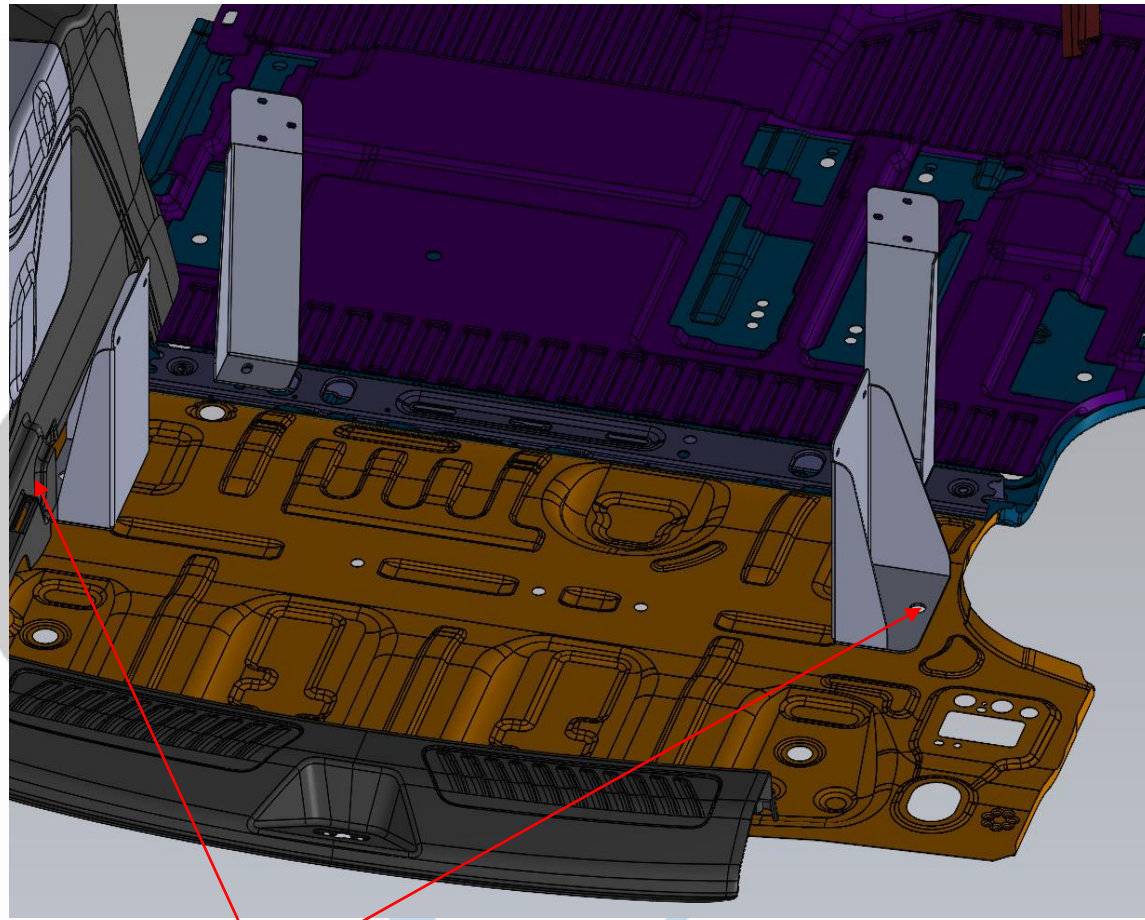


USING HARDWARE PROVIDED, INSTALL TWO FRONT MOUNTING FEET TO VEHICLE.

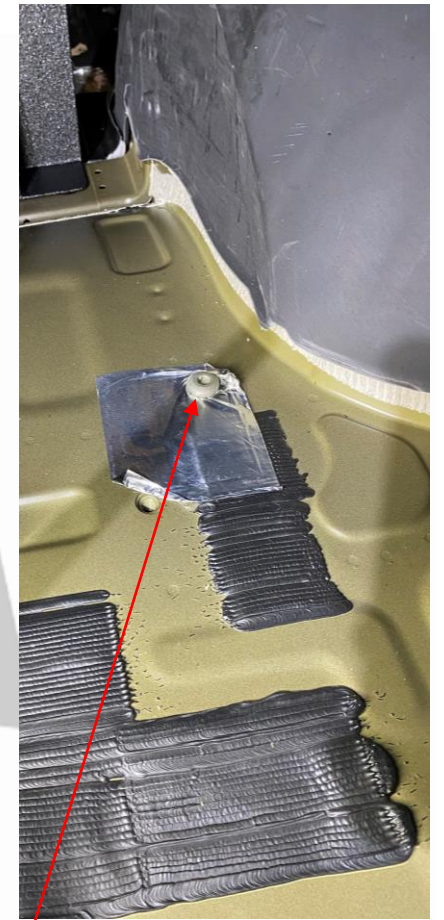
EMERGENCY EQUIPMENT



REMOVE
FACTORY BOLTS
FROM THESE
TWO LOCATIONS

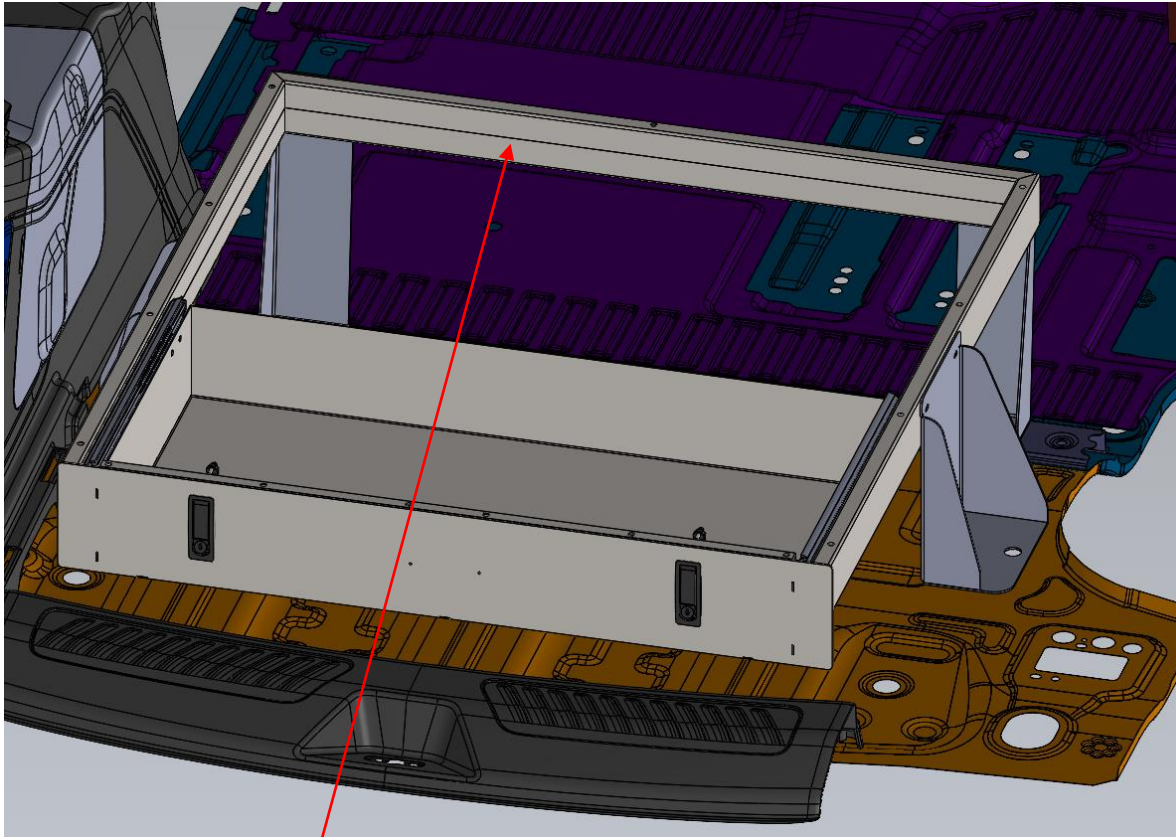


USE FACTORY HARDWARE TO
INSTALL PASSENGER AND
DRIVER REAR FEET.



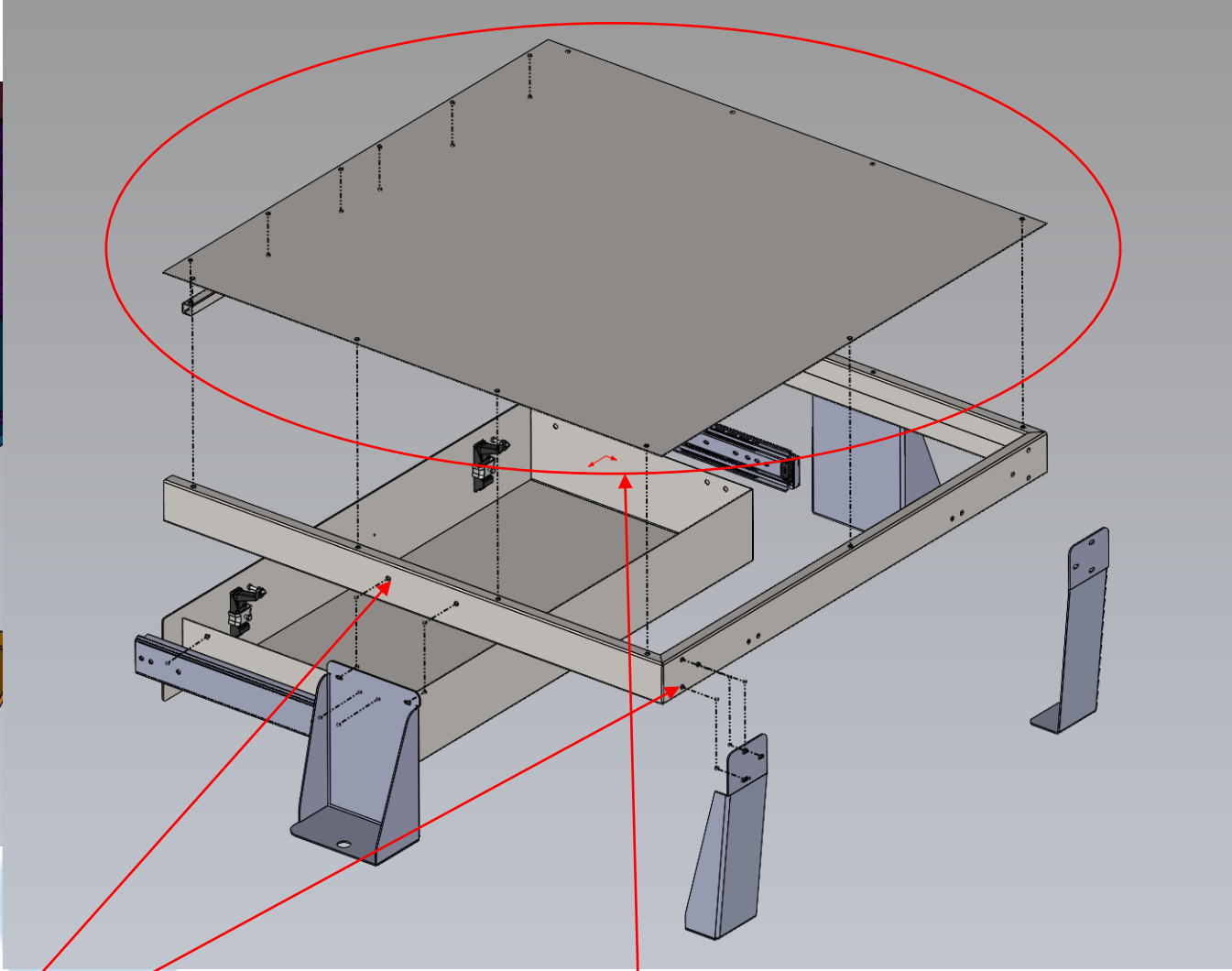
REMOVE FACTORY BOLT
FROM THIS LOCATION

EMERGENCY EQUIPMENT



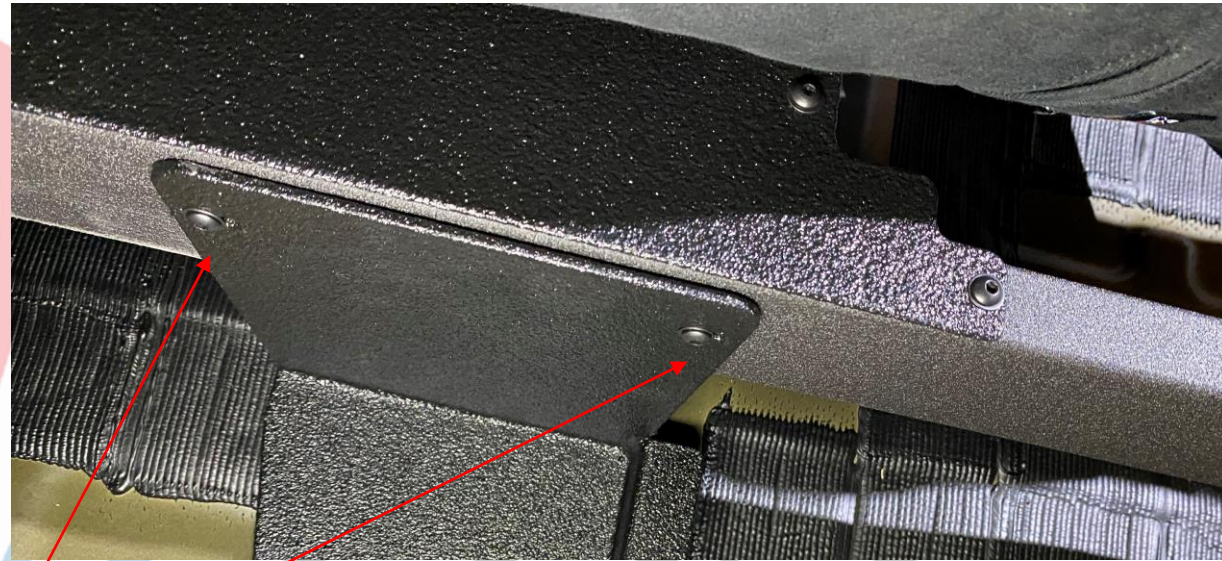
PLACE FRAME AND
DRAWER ASSEMBLY INTO
VEHICLE.

UTILIZE PROVIDED 10-32
SCREWS AND WASHERS TO
SECURE MOUNTS TO
FRAME.



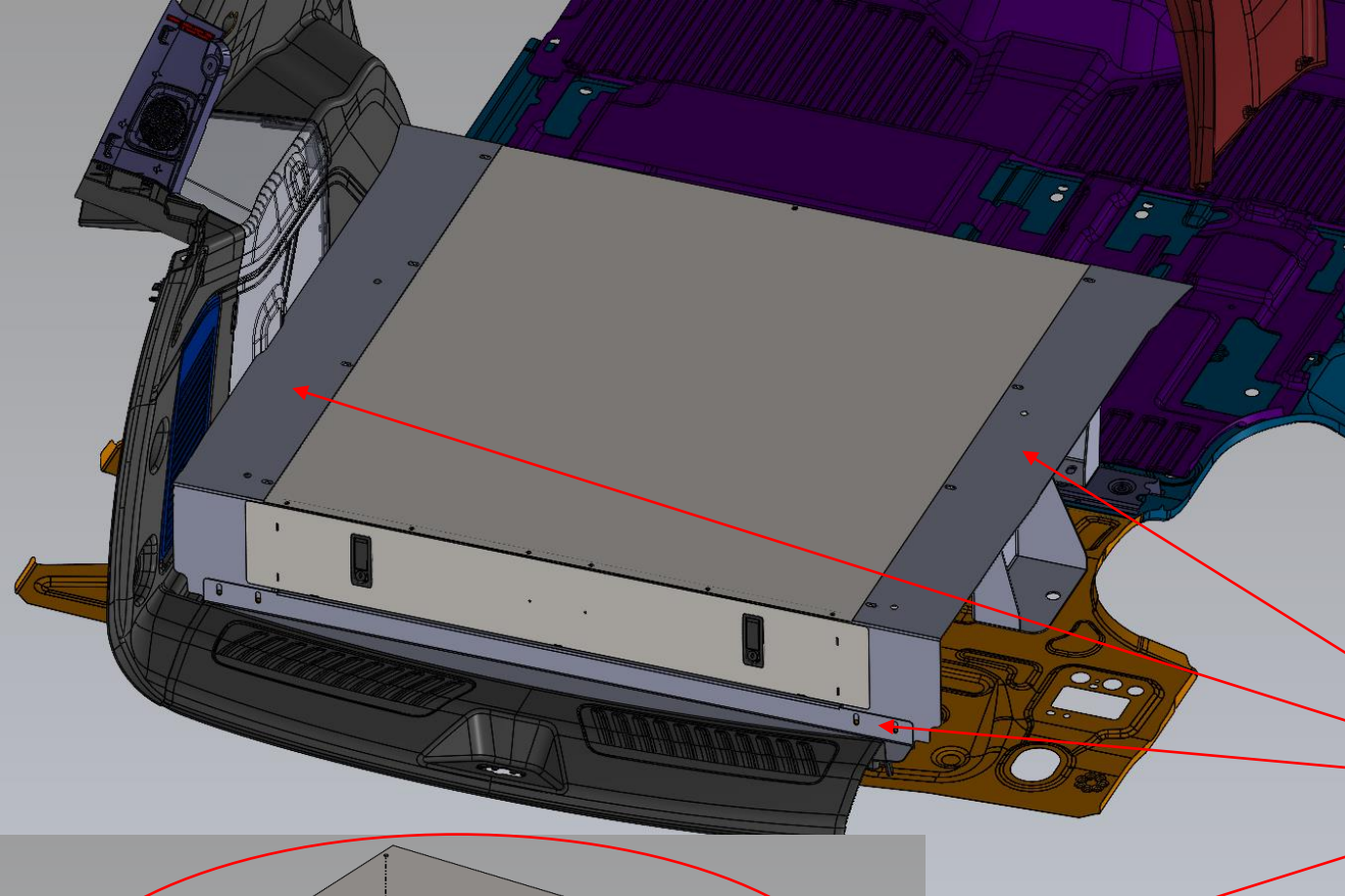
FRAME AND DRAWER ASSEMBLY WILL
COME PRE-ASSEMBLED IN THE BOX.
REMOVING THE TOP COVER CAN FACILITATE
EASIER INSTALLATION.

EMERGENCY EQUIPMENT

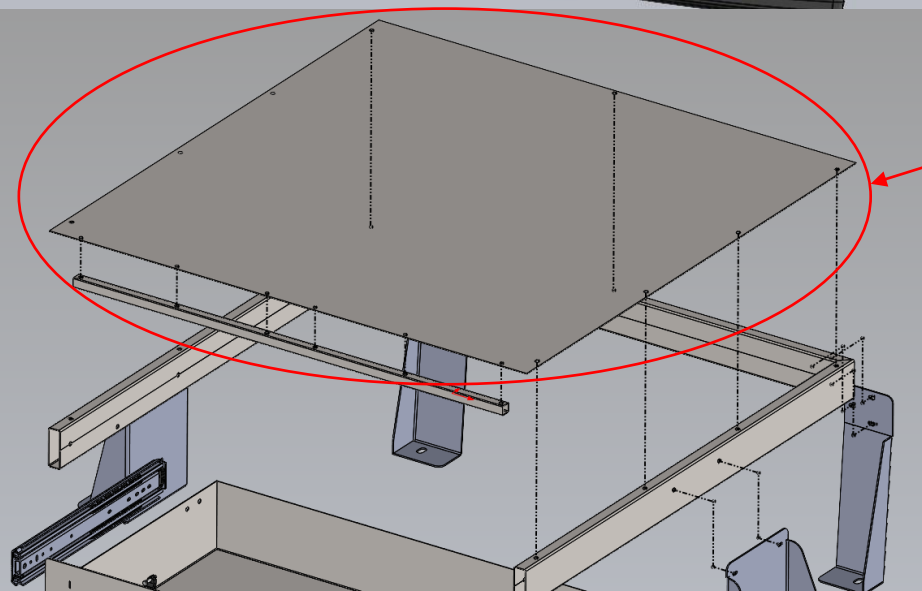


INSTALL SUPPLIED 10-32
BHCS INTO ALL MOUNTING
BRACKETS ON FRAME

EMERGENCY EQUIPMENT



INSTALL TOP, PASSENGER, DRIVER, AND LOWER REAR FILLER PANELS INTO VEHICLE.



EMERGENCY EQUIPMENT

