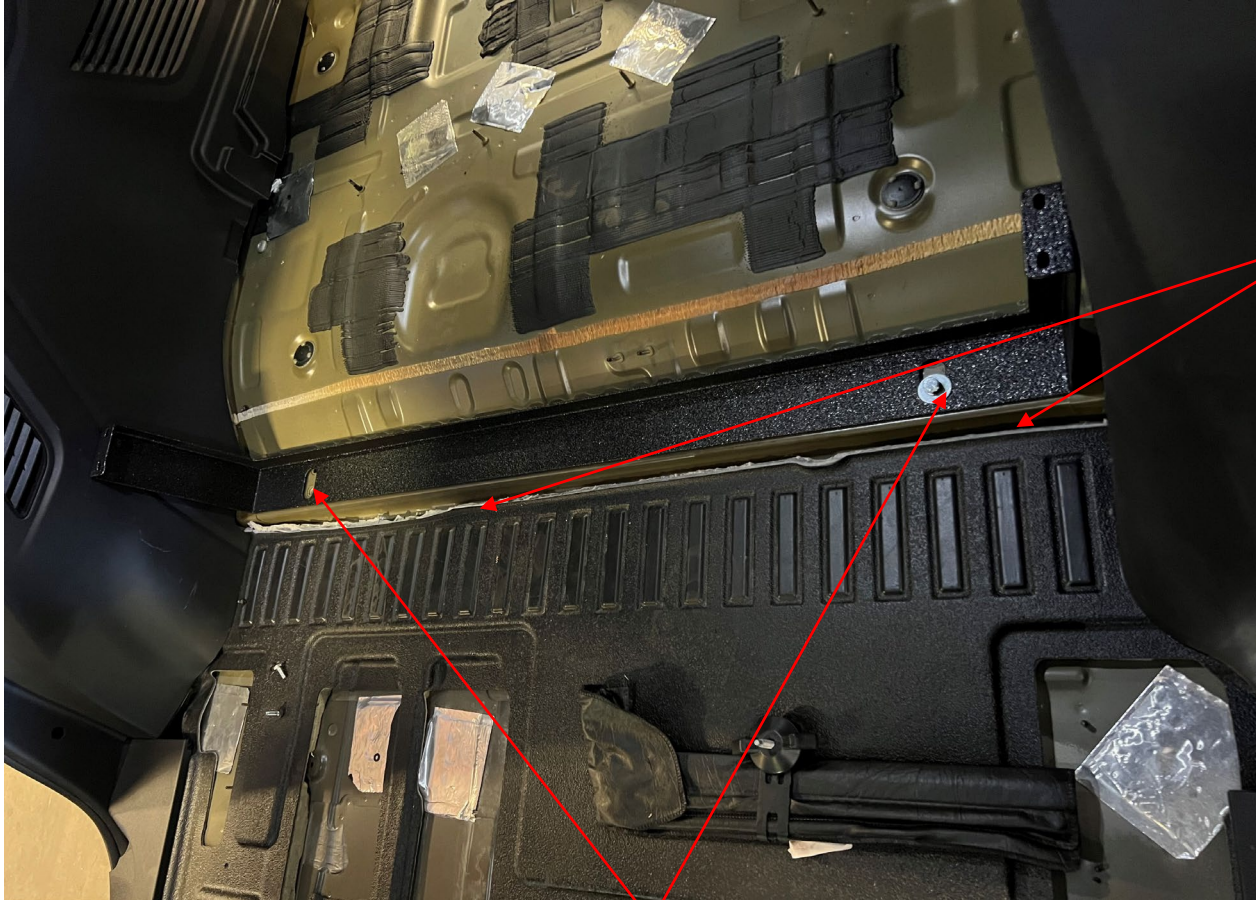


INV-ES-FF-FR-TAH Install Instructions

2022 Tahoe

Mounts



REMOVE FACTORY RUBBER FLOOR IN REAR OF VEHICLE.

USE A UTILITY KNIFE TO CUT FLOOR RUBBER AND FOAM BACK BEHIND THE 3RD ROW SEAT MOUNT.

USING PROVIDED 3/8" BOLTS AND WASHERS, INSTALL REAR STRAP INTO CAR, BEND IN STRAP WILL BE TOWARDS REAR OF CAR. DO NOT TIGHTEN AT THIS POINT.



FLOOR ASSEMBLY WILL COME PRE-ASSEMBLED. INSERT FLOOR ASSEMBLY INTO VEHICLE, REAR LOWER TRIM CAN BE REMOVED FOR EASE OF INSTALL.

FLOOR WILL REST ON FRONT MOUNT, DO NOT ADD SCREWS YET.

WITH LOWER TRIM INSTALLED SLIDE FLOOR TOWARDS REAR UNTIL MOUNTS ARE ABOUT 1/8" FROM PLASTICS.



PENCIL A MARK WHERE THE HOLES ON THE MOUNTS MEET THE FLOOR OF THE VEHICLE. YOU WILL BE DRILLING OUT FOR A NUTSERT USING A 7/16" DRILL BIT.

IT IS RECOMMENDED TO USE A UTILITY KNIFE TO REMOVE THE EXCESS RUBBER WHERE THE MOUNTS ARE LOCATED, TO ENSURE THE FLOOR SITS FLAT.



SLIDE FLOOR TOWARD FRONT ON MOUNTS, REMOVE THE RUBBER FROM THE VEHICLE FLOOR, AND DRILL AND INSTALL NUTSERTS INTO VEHICLE FLOOR. REMOVAL OF REAR LOWER TRIM WILL MAKE THIS EASIER.

MOVE FLOOR BACK INTO PLACE, INSTALL PROVIDED $\frac{1}{4}$ -20 SCREWS INTO NUTSERTS.



INSTALL PROVIDED 10/32 SCREWS INTO SLOT LOCATIONS ON MOUNT INTO FLOOR. THERE WILL BE A TOTAL OF 4 SCREWS, 2 PER SIDE. TIGHTEN SCREWS TO FLOOR.

TIGHTEN MOUNT TO FLOOR OF VEHICLE.



RE- INSTALL REAR HATCH TRIM, IF NEEDED.

INSTALL FILLER PANEL USING 10-32 SCREWS.



