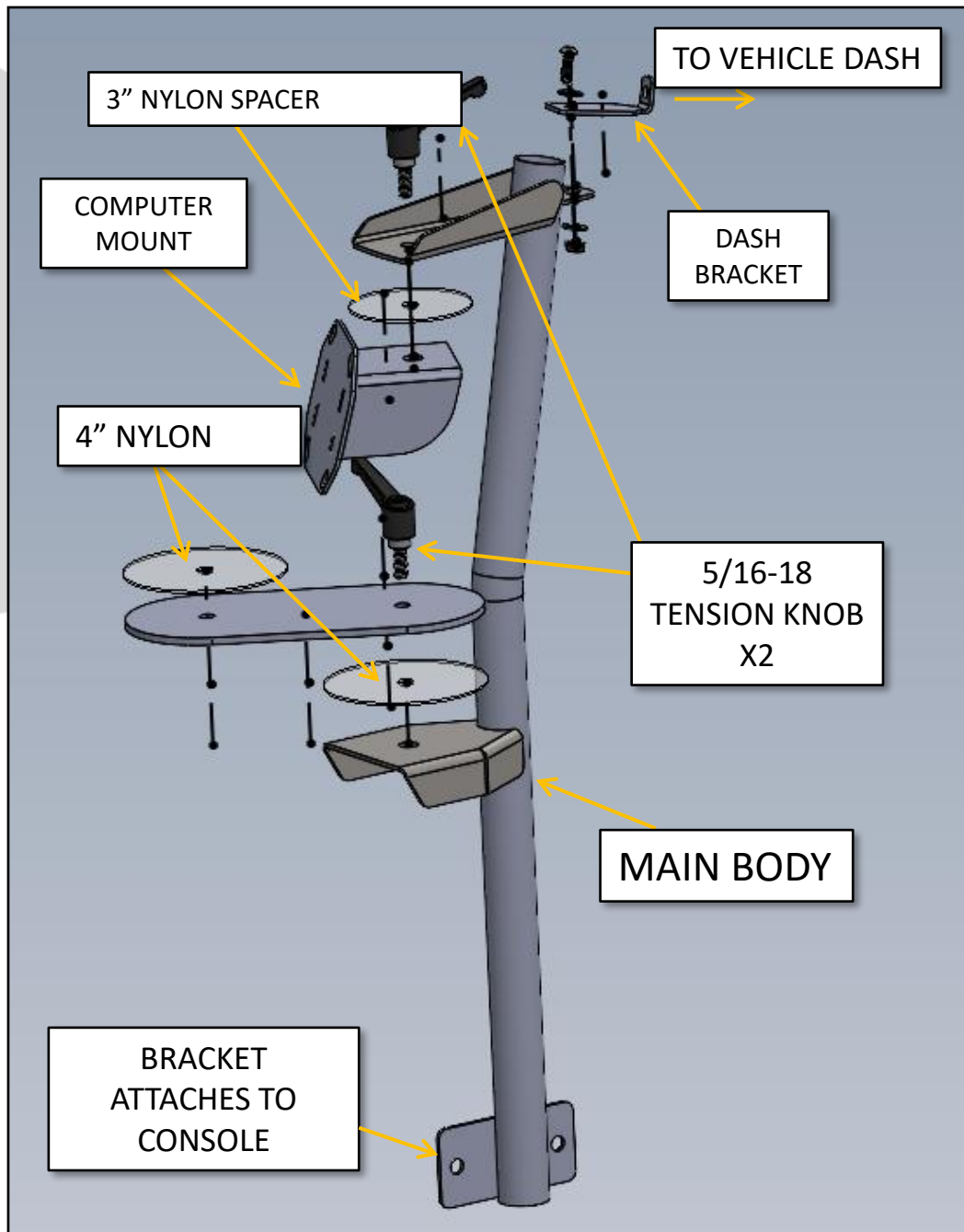


EMERGENCY EQUIPMENT

INV-ACC-SVL-SLVR

INSTALLATION INSTRUCTIONS

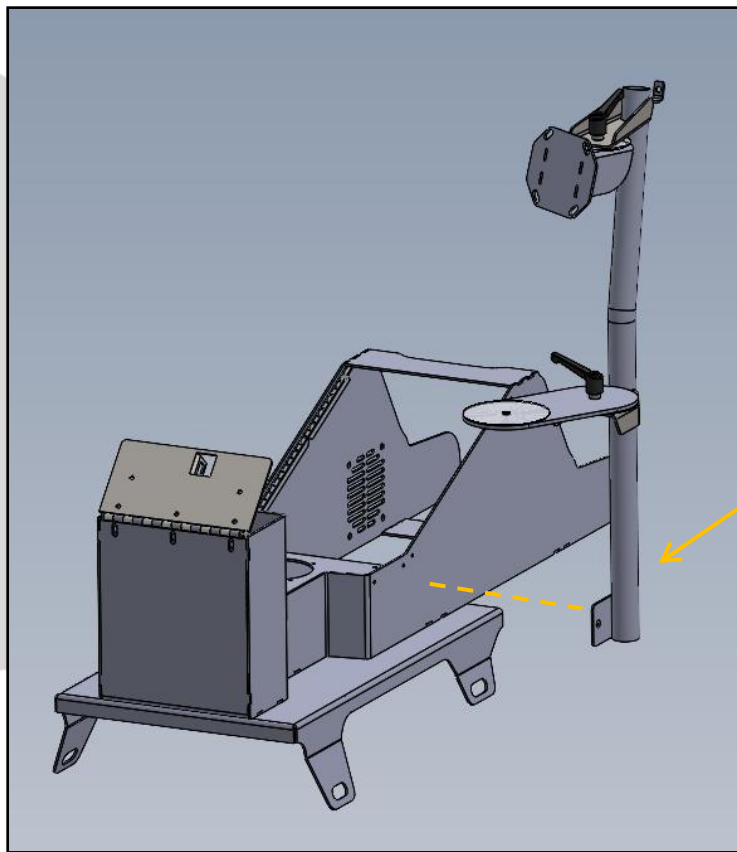


ASSEMBLY OF SWIVEL SCREEN

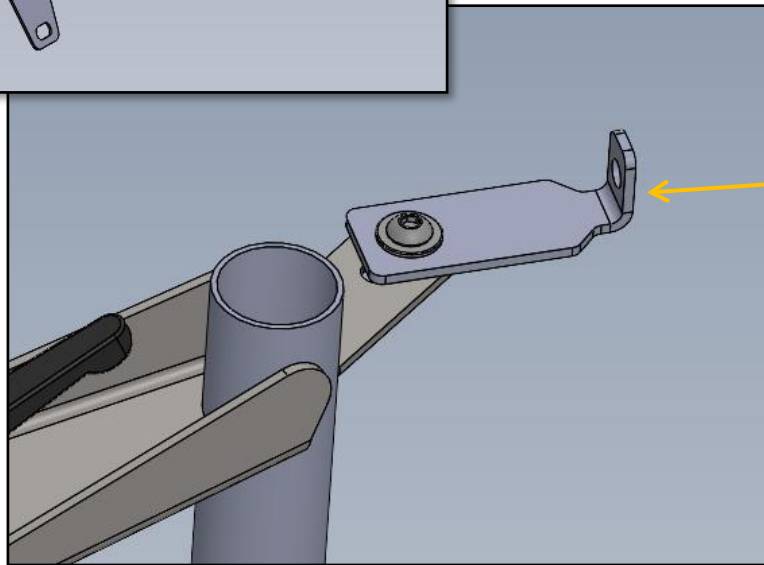
NYLON WASHERS INCLUDED TO PREVENT BINDING OF POWDERCOATED PARTS

HARDWARE BAG TO INCLUDE:

- 1X MAIN BODY
- 1X DASH BRACKET
- 1X TABLET MOUNT
- 1X PIVOT ARM
- 2X 5/16-18 TENSION KNOBS
- 3X ¼-20 BHCS
- 4X 1/4" WASHERS
- 1X ¼-20 KEP NUTS
- 2X 4" NYLON SPACERS
- 1X 3" NYLON SPACER



ATTACH TO CENTER CONSOLE USING 2X ¼-20 BHCS
W/WASHERS.



DASH BRACKET TO ATTACH UNDERNEATH
CONSOLE TRIM. SURROUND MAY NEED TO BE
TRIMED FOR BRACKET. BRACKET SHOWN IS
SPECIFIC TO SILVERADO 1500 INSTALL



1616 MARLBOROUGH AVE. RIVERSIDE, CA 92507

FOR TECHNICAL ASSISTANCE WITH INSTALLATION OR
OTHER QUESTIONS, PLEASE CALL (951) 222-2270

OR EMAIL SUPPORT@IDSMP.COM

Thank you for your business!