

EMERGENCY EQUIPMENT

INV-BOX-MK-BLAZER-SLD

INSTALLATION INSTRUCTIONS



INSTALLATION OF REAR SLIDING BOX MOUNT

INSTALL KIT INCLUDES:

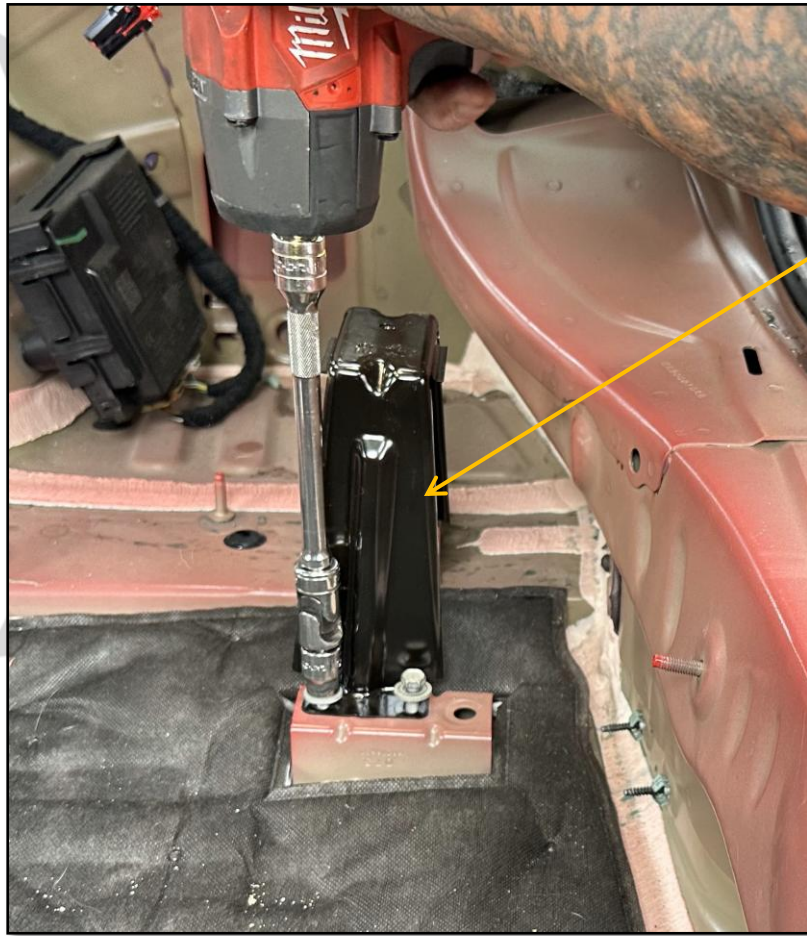
- 2X MOUNTING FEET
- 2X SLIDE RAIL BRACKETS
- 1 SET LOCKING SLIDE RAILS
- 2X SUPPORT BRACKETS
- 3X 1" M10 BOLTS & WASHERS
- 4X ¼-20 NUTSERTS
- 10X ¼-20 BHCS & WASHERS
- 6X 10-32 BHCS & WASHERS

EMERGENCY EQUIPMENT

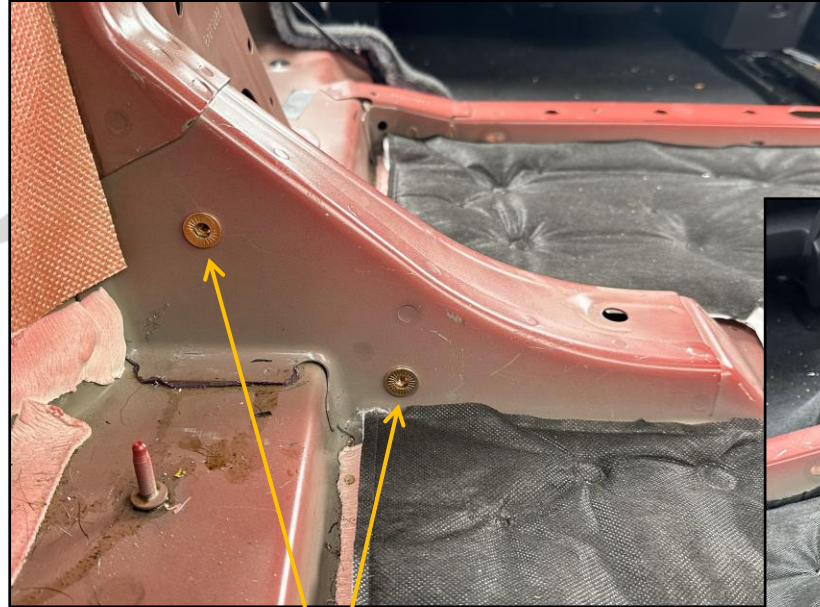


REMOVE SPARE TIRE, SPARE COVER, AND
REAR CARGO AREA PLASTIC PANELS AS
SHOWN

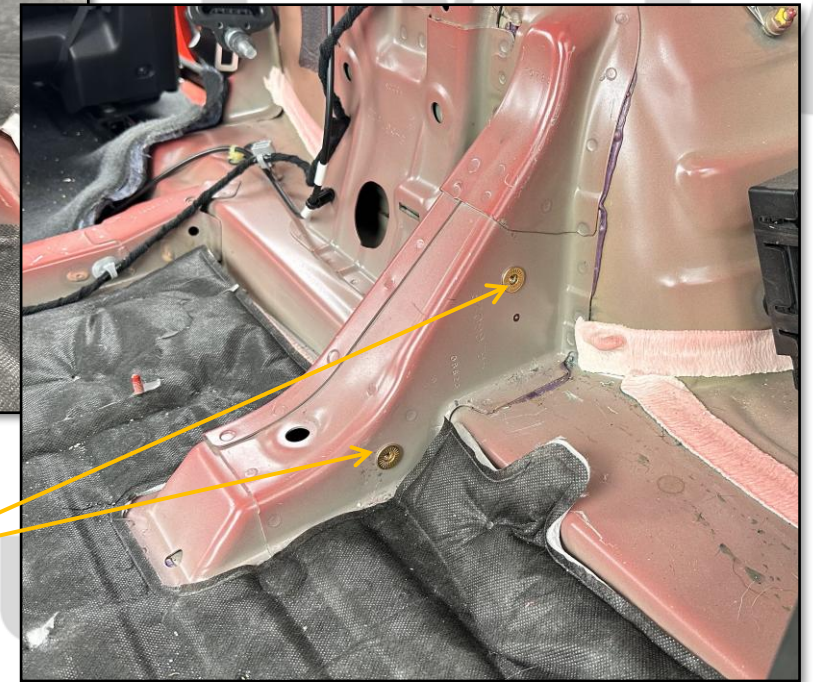


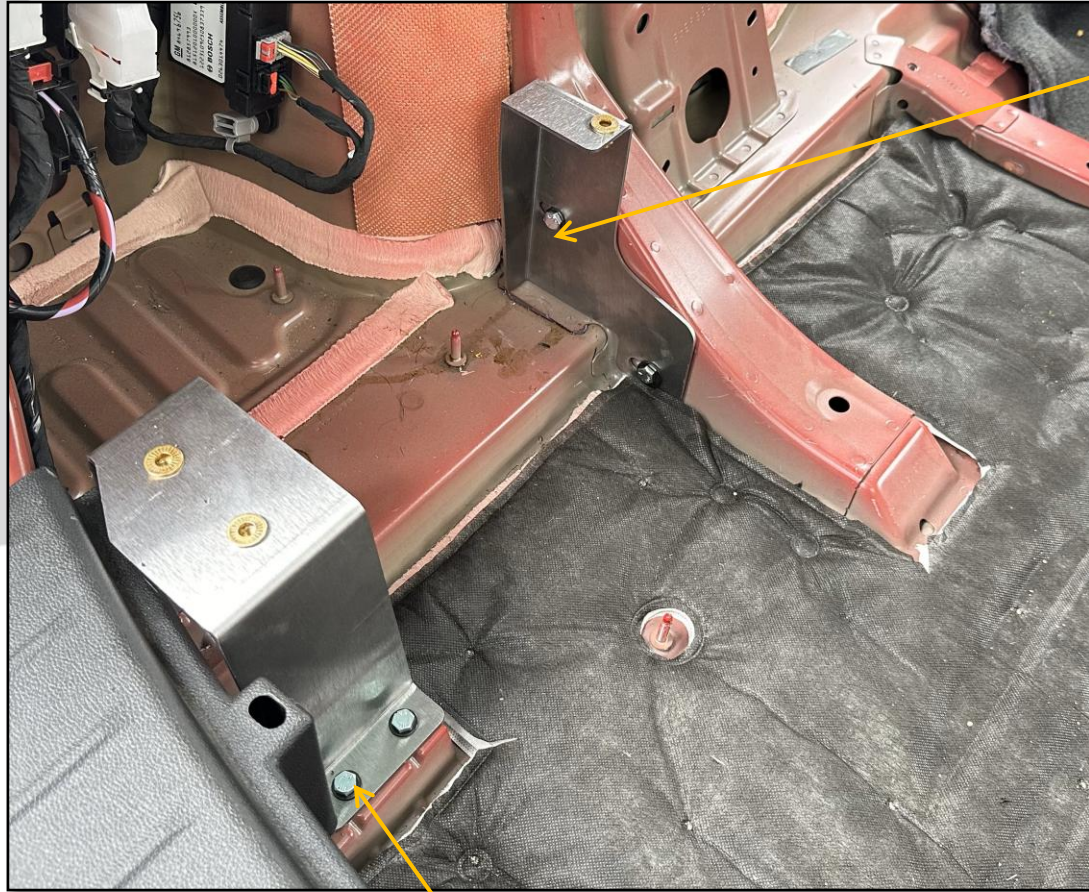


REMOVE FACTORY SUPPORT
BRACKET AS SHOWN,
RETAIN FACTORY BOLTS FOR
INSTALLATION OF NEW BRACKET



INSTALL 1/4-20 NUTSERTS PROVIDED
INTO FACTORY HOLE LOCATIONS
AS SHOWN





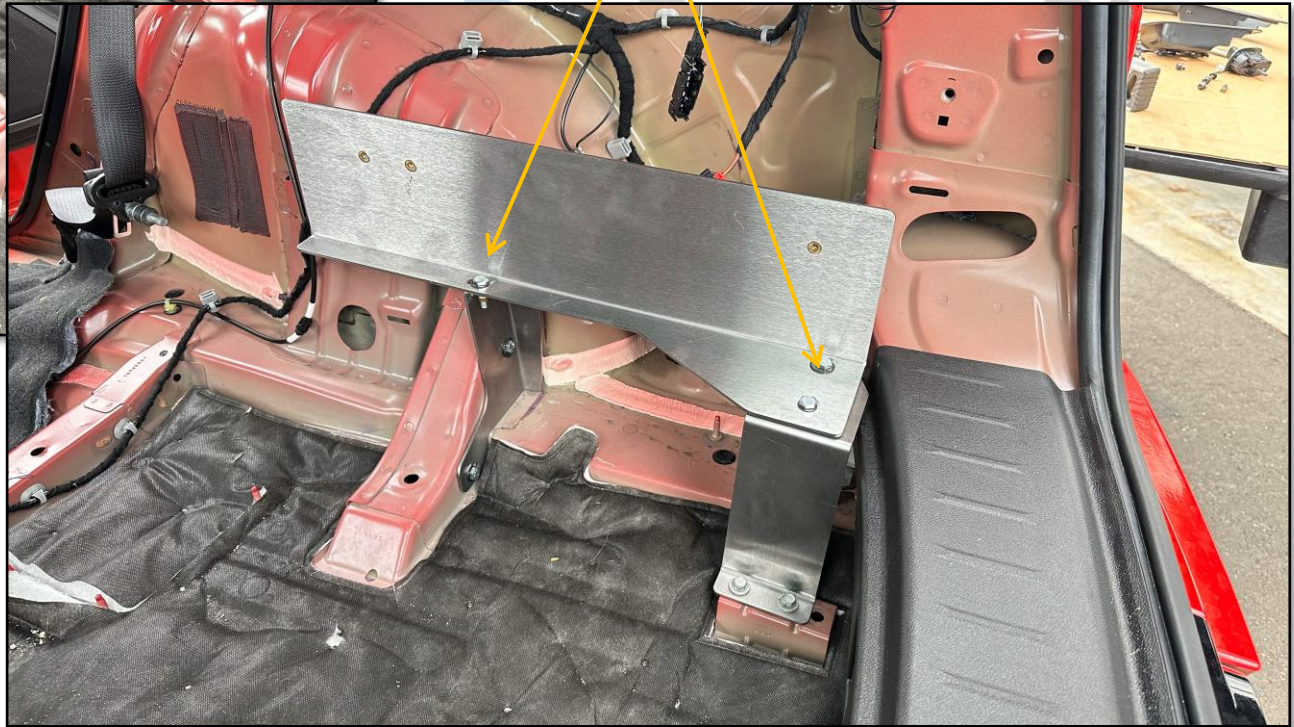
INSTALL REAR BRACKETS WITH 10MM BOLTS
& WASHERS PROVIDED

SECURE FRONT MOUNTING FEET WITH
 $\frac{1}{4}$ -20 BHCS & WASHERS PROVIDED.



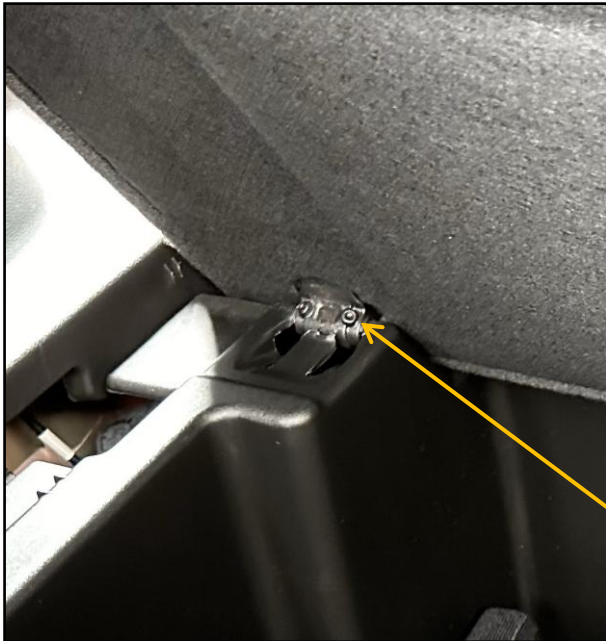
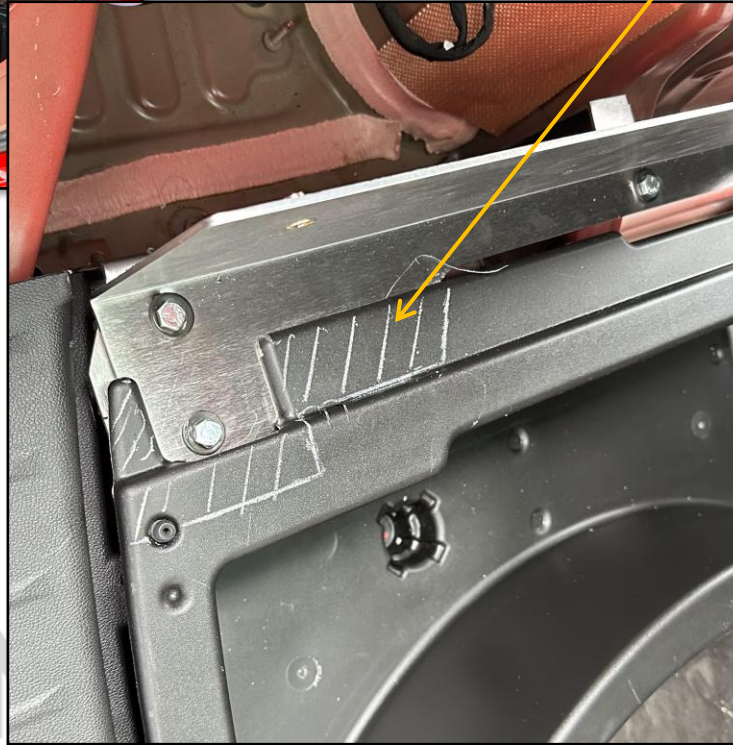


INSTALL SLIDE RAIL BRACKETS ON FEET AS SHOWN, USING SUPPLIED $\frac{1}{4}$ -20 BHCS
NOTE ORIENTATION OF BRACKETS
FOR CORRECT INSTALLATION

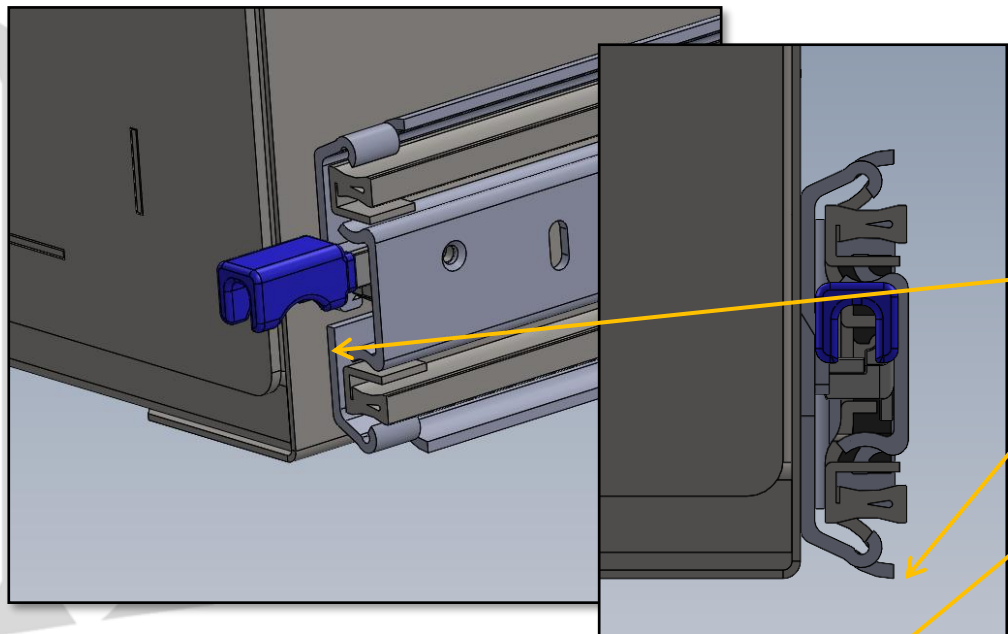




PLACE SPARE TIRE COVER IN POSITION,
MARK AND TRIM PLASTICS AS SHOWN.
PLACE SIDE PLASTICS AND MARK AND TRIM
AS SHOWN TO CLEAR MOUNTING KIT.



REMOVE SCREWS FROM HINGES ON
SPARE TIRE COVER PANEL

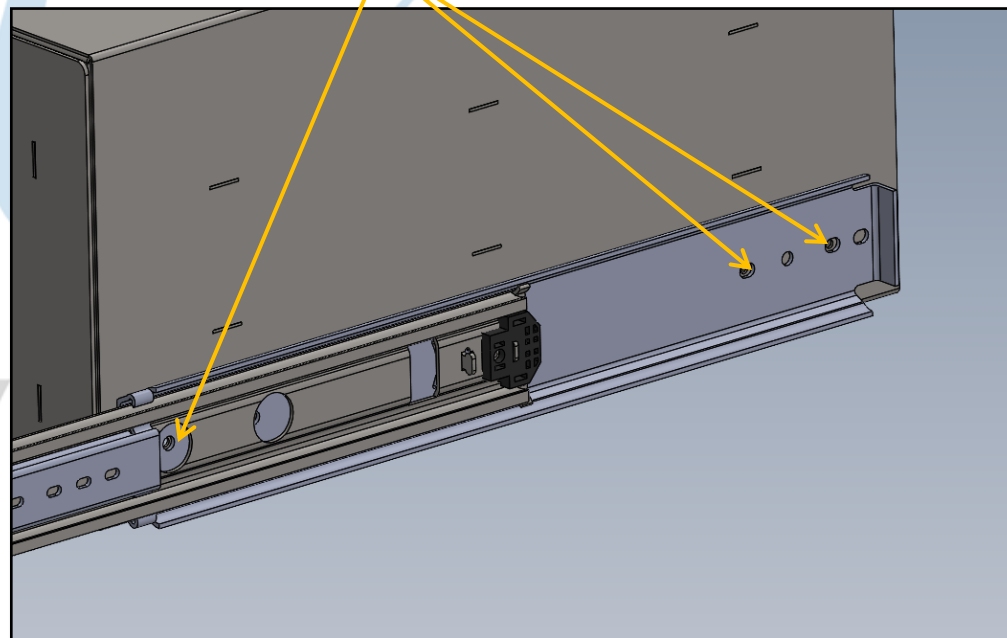
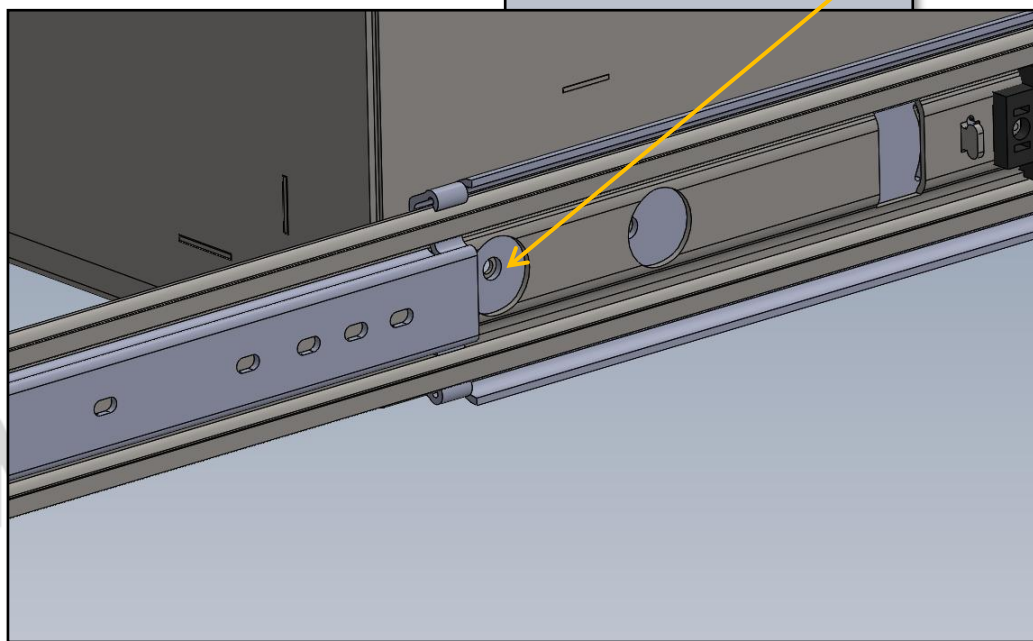


NOTE: IF BOX DOES NOT HAVE PRE-INSTALLED NUTSERTS YOU WILL NEED TO MARK AND DRILL HOLES AS FOLLOWS:

LINE SLIDE UP TO BOX AS SHOWN, APPROX $\frac{3}{8}$ " TO $\frac{1}{2}$ " FROM FRONT EDGE, AND LEVEL WITH BOTTOM EDGE.

OPEN SLIDE ENOUGH TO SEE FORWARD MOST MOUNTING HOLE.

USING SLIDE HOLES SHOWN, MARK AND DRILL FOR HARDWARE INSTALLATION.





EXTEND SLIDES TO FULL OPEN AND ATTACH SMALL RAILS AS SHOWN USING 10-32 BHCS PROVIDED. SLIDE BOX FORWARD TO CHECK OPERATION, ADJUST SLIDE BRACKETS AS NEEDED.

INSTALL DRAWER INTO BOX TO COMPLETE INSTALLATION.





1616 MARLBOROUGH AVE. RIVERSIDE, CA 92507

FOR TECHNICAL ASSISTANCE WITH INSTALLATION OR
OTHER QUESTIONS, PLEASE CALL (951) 222-2270

OR EMAIL SUPPORT@IDSMP.COM

Thank you for your business!