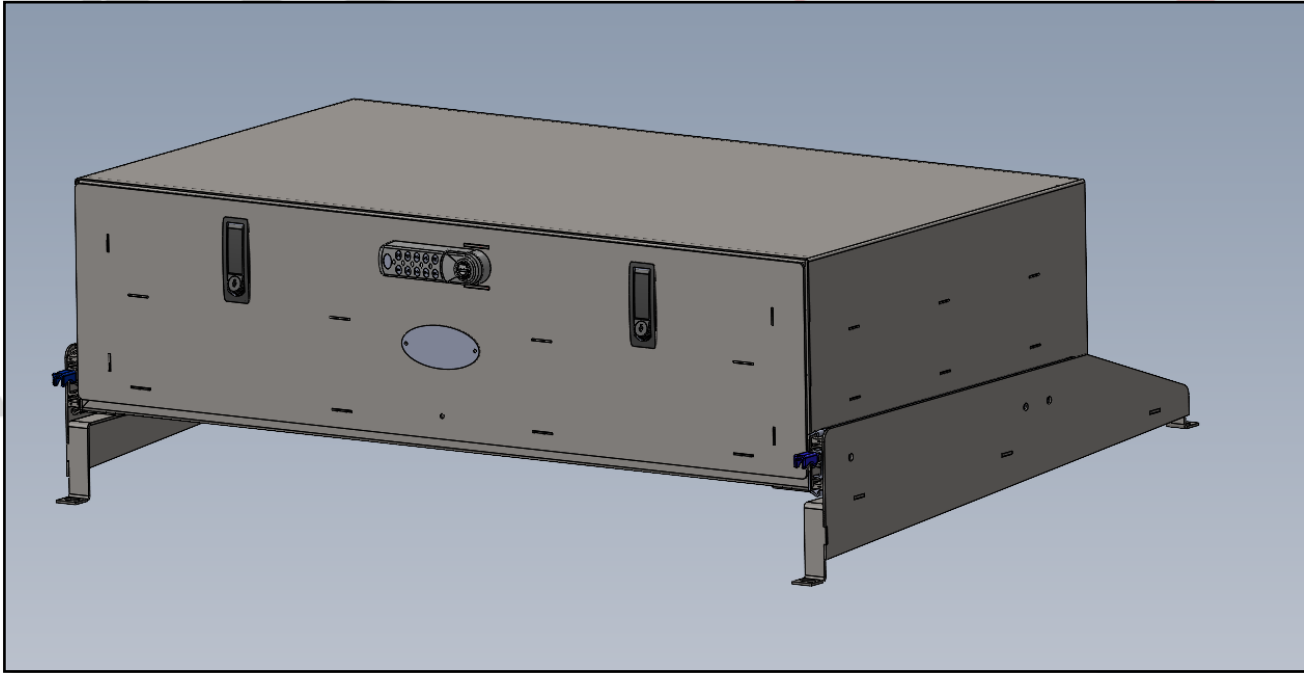


EMERGENCY EQUIPMENT

INV-BOX-MK-DURANGO

INSTALLATION INSTRUCTIONS



INSTALLATION OF REAR SLIDING BOX MOUNT

INSTALL KIT INCLUDES:

1 PAIR MOUNTING BRACKETS

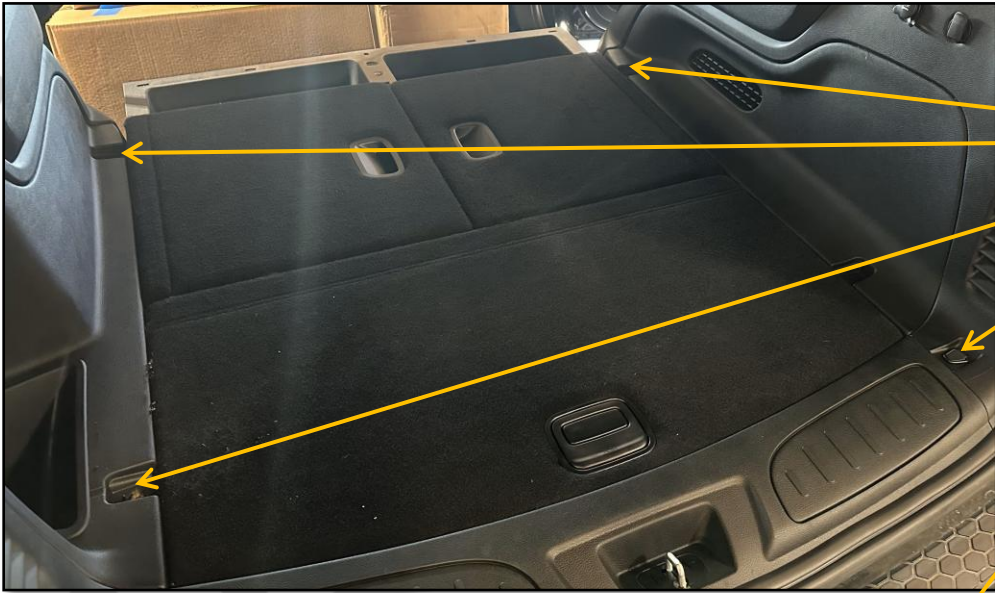
1 SET LOCKING SLIDE RAILS

4X $\frac{1}{4}$ -20 NUTSERTS

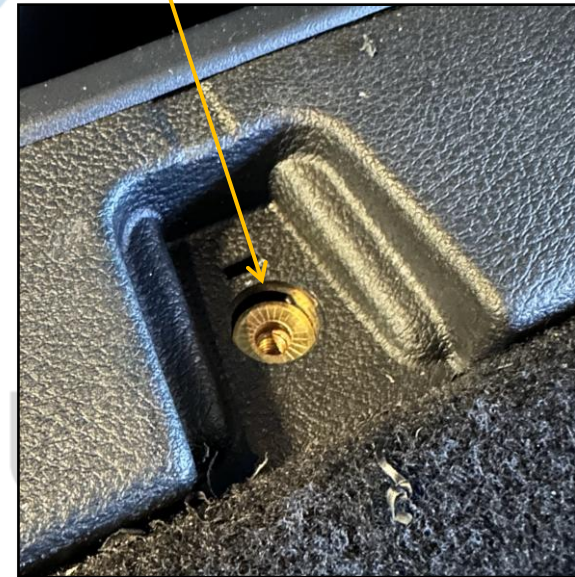
4X $\frac{1}{4}$ -20 X $\frac{3}{4}$ " SHCS & WASHERS

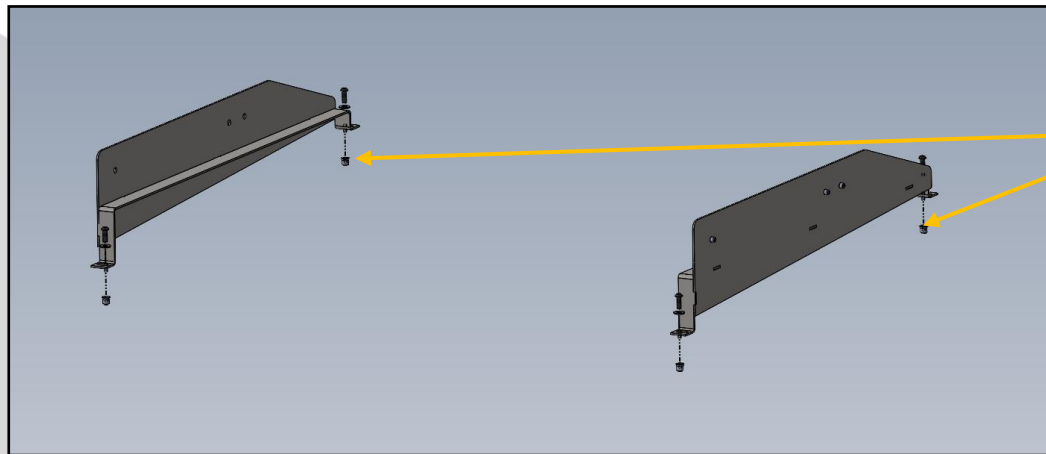
ALL HARDWARE FOR SLIDE INSTALLATION

EMERGENCY EQUIPMENT

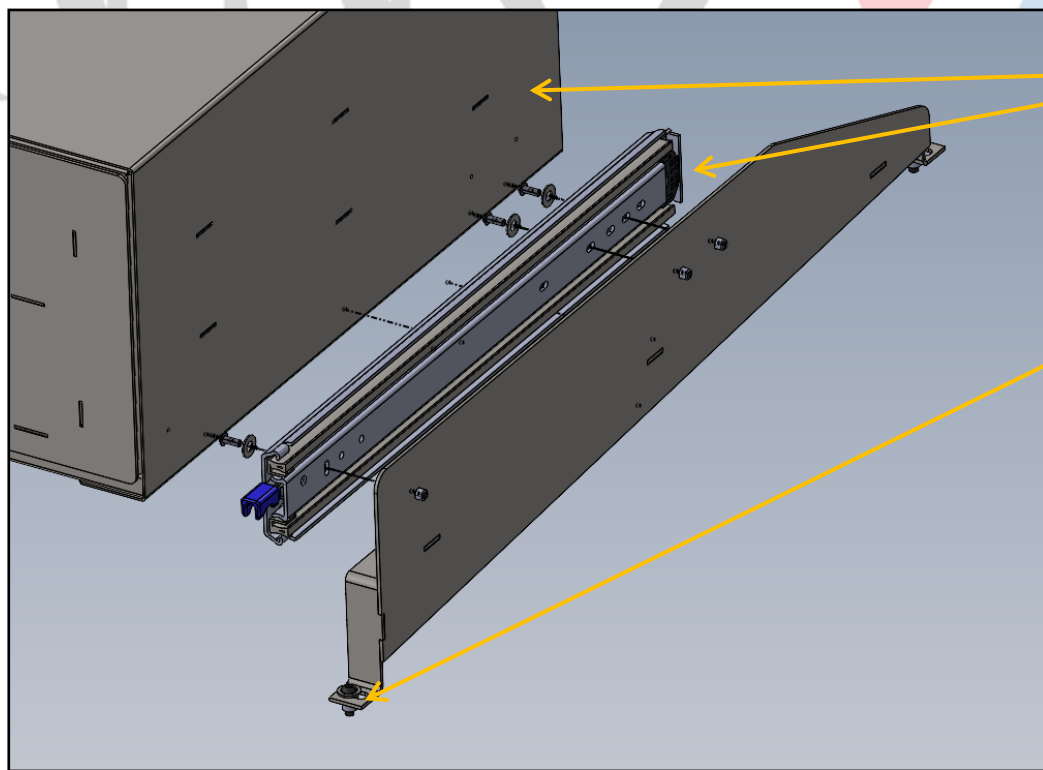


- REMOVE ALL FOUR CARGO TIE-DOWNS
- DRILL 3/8" FOR NUTSERT HOLES
- COUNTERBORE PLASTIC 3/4" TO CLEAR TOP OF NUTSERTS
- INSTALL NUTSERTS INTO METAL

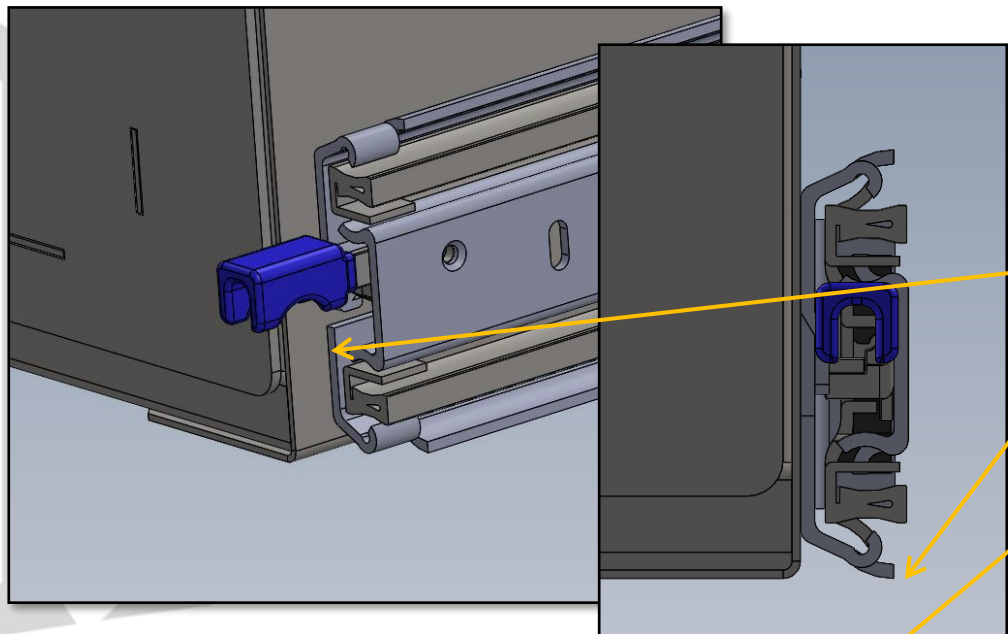




MOUNT BRACKETS TO VEHICLE USING PROVIDED HARDWARE, DO NOT COMPLETELY TIGHTEN SCREWS AT THIS POINT



MOUNT SLIDES ON TO BRACKETS, THEN TO BOX. ONCE BOX IS MOUNTED, BRACKETS CAN BE ADJUSTED AND HARDWARE CAN BE TIGHTENED DOWN COMPLETELY

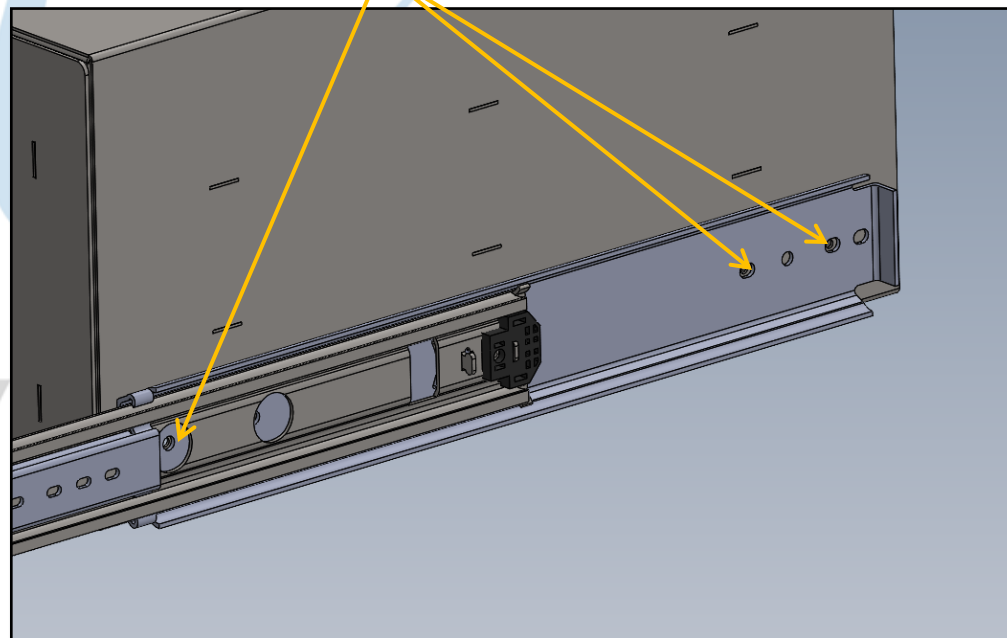
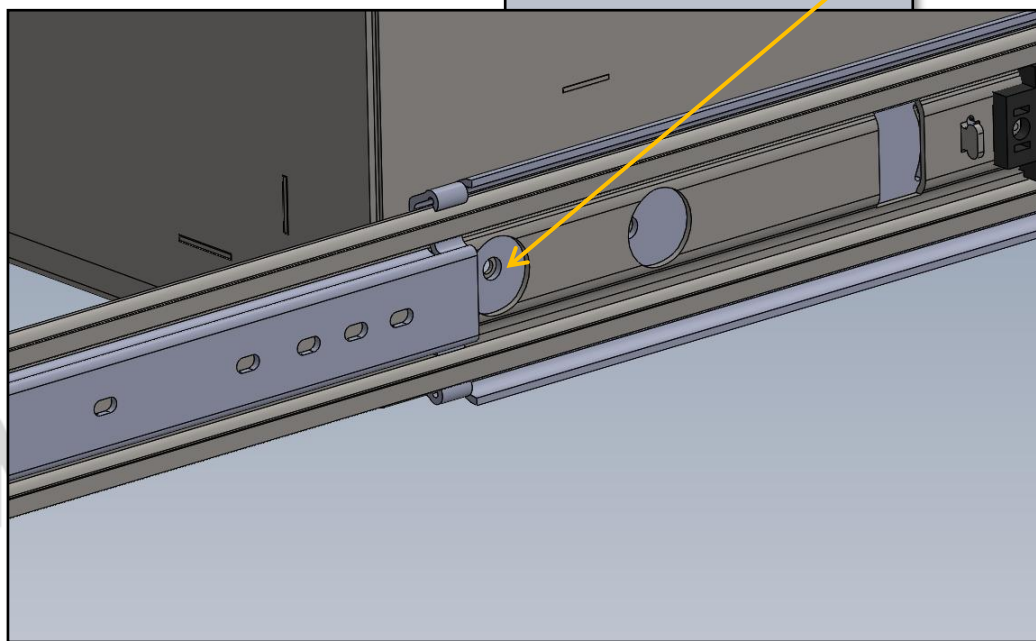


NOTE: IF BOX DOES NOT HAVE PRE-INSTALLED NUTSERTS YOU WILL NEED TO MARK AND DRILL HOLES AS FOLLOWS:

LINE SLIDE UP TO BOX AS SHOWN, APPROX 3/8" TO 1/2" FROM FRONT EDGE, AND LEVEL WITH BOTTOM EDGE.

OPEN SLIDE ENOUGH TO SEE FORWARD MOST MOUNTING HOLE.

USING SLIDE HOLES SHOWN, MARK AND DRILL FOR HARDWARE INSTALLATION.







1616 MARLBOROUGH AVE. RIVERSIDE, CA 92507

FOR TECHNICAL ASSISTANCE WITH INSTALLATION OR
OTHER QUESTIONS, PLEASE CALL (951) 222-2270

OR EMAIL SUPPORT@IDSMP.COM

Thank you for your business!