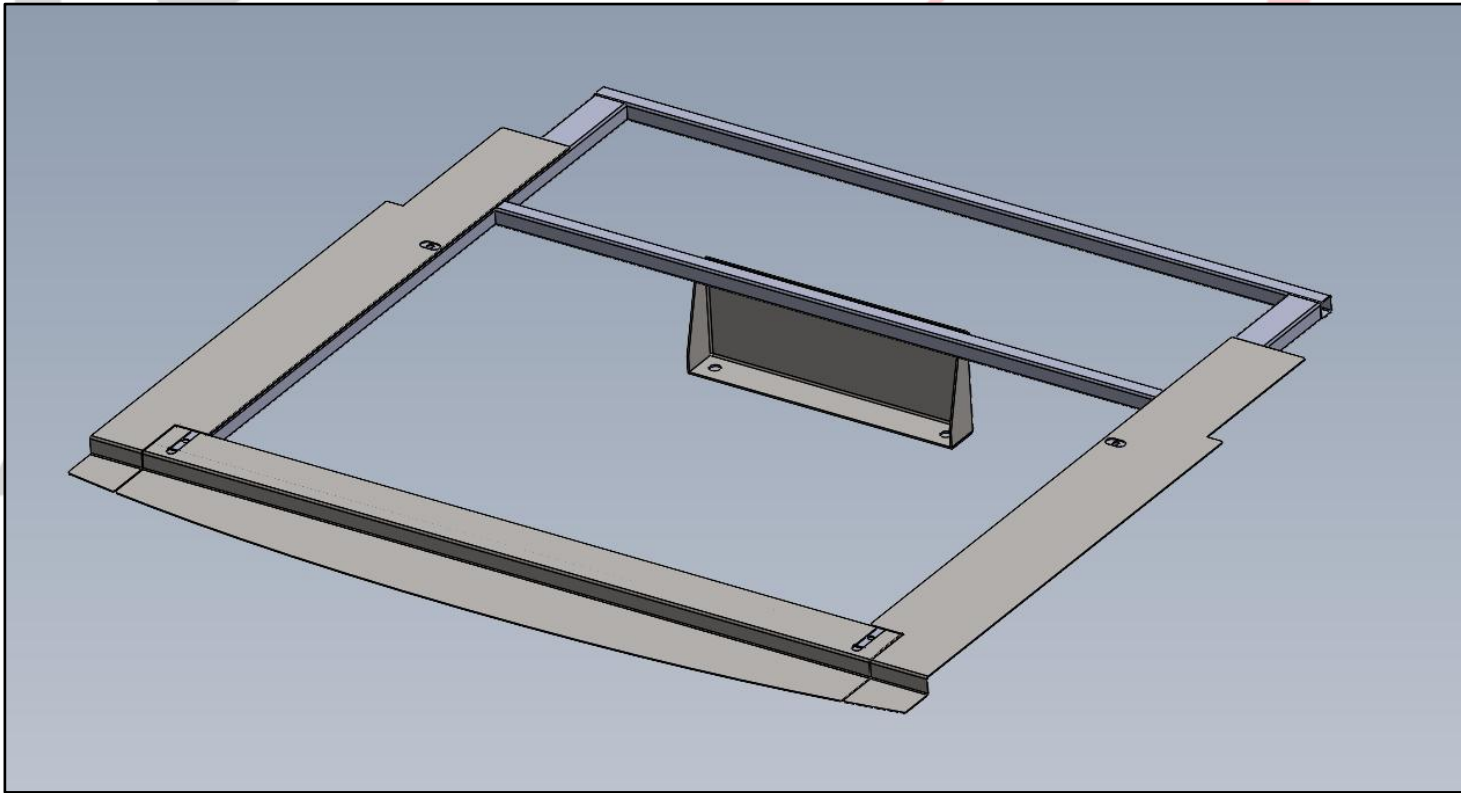


EMERGENCY EQUIPMENT

INV-BOX-MK-EXPO

INSTALLATION INSTRUCTIONS



INSTALLATION OF FORD EXPEDITION REAR BOX MOUNT

INSTALL KIT INCLUDES:

MOUNTING FRAME

FILLER PANELS

HARDWARE AS NEEDED

PER BOXES BEING MOUNTED

4X ¼-20 NUTSERTS, SCREWS & WASHERS

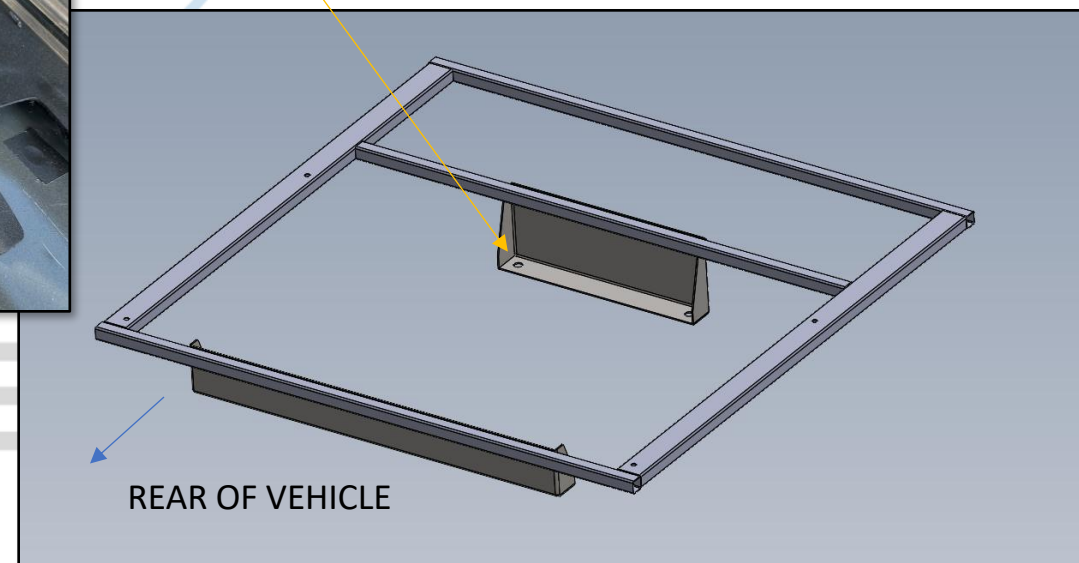
EMERGENCY EQUIPMENT

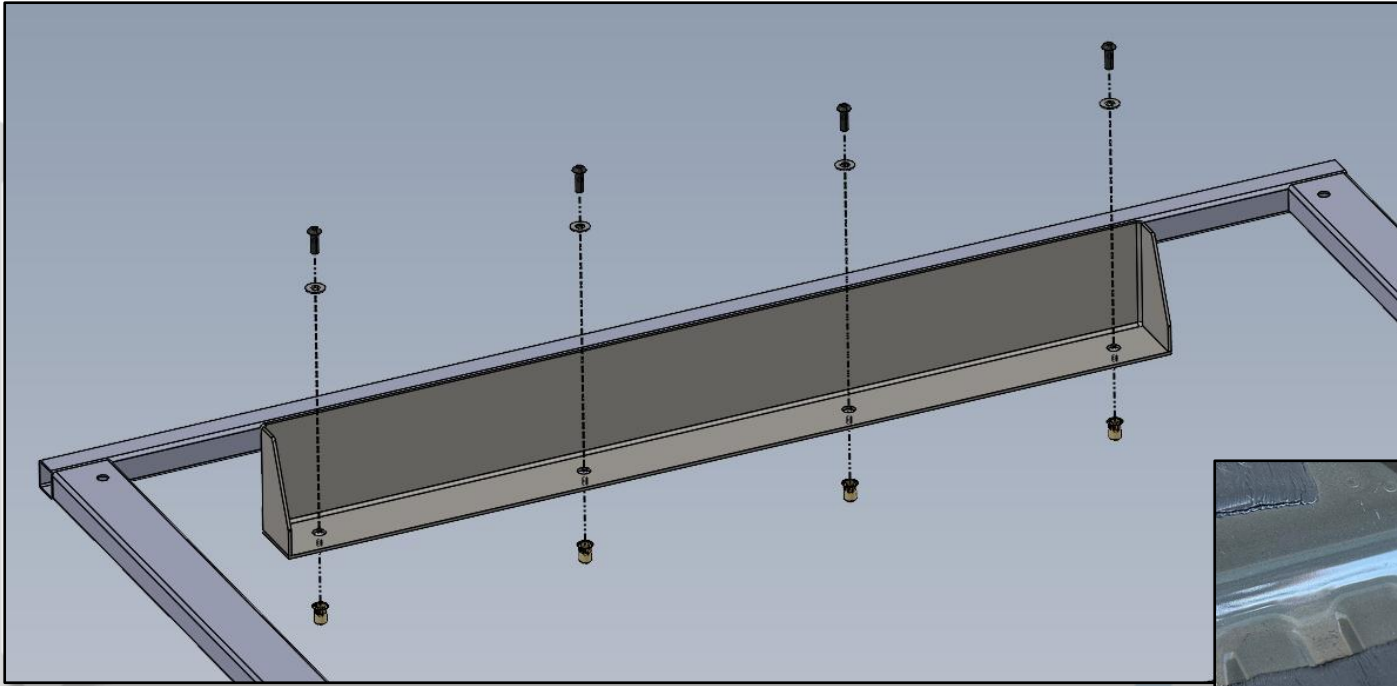


REMOVE CARPET AND TRIM AS NEEDED IN BOX AREA.

FRONT MOUNTING FOOT BOLTS **MAY GO TO EXISTING VEHICLE HOLES USING VEHICLE HARDWARE. IF HOLES DO NOT EXIST IT WILL REQUIRE DRILLING AND NUTSERTING FLOOR WITH PROVIDED HARDWARE.

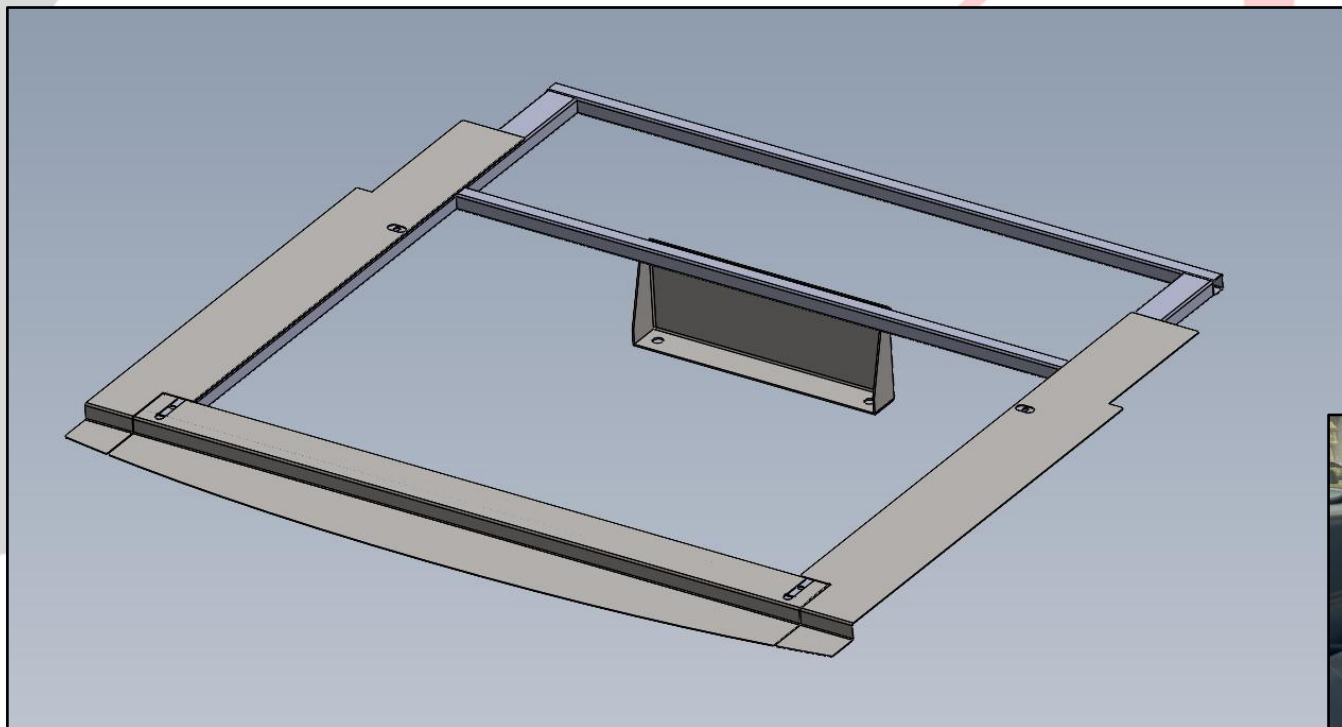
NOTE: FRAME IN PHOTOS IS MODIFIED FOR SPECIFIC INSTALLATION, APPEARANCE MAY DIFFER FOR SPECIFIC INSTALL REQUIREMENTS.





USING MOUNTING FOOT AS A GUIDE,
DRILL AND INSTALL (4) $\frac{1}{4}$ -20 NUTSERTS
IN VEHICLE FLOOR. BOLT MOUNT TO
FLOOR USING $\frac{1}{4}$ -20 BOLTS AND
WASHERS.





INSTALL FILLER PANELS AS SHOWN,
MOUNT BOXES TO HOLES IN FRAME.
FRAMES WILL BE CUSTOMIZED TO SUIT
BOX INSTALLATION NEEDS,
FRAME APPEARANCES MAY VARY FROM
ILLUSTRATIONS SHOWN



EMERGENCY



1616 MARLBOROUGH AVE. RIVERSIDE, CA 92507

FOR TECHNICAL ASSISTANCE WITH INSTALLATION OR
OTHER QUESTIONS, PLEASE CALL (951) 222-2270

OR EMAIL SUPPORT@IDSMP.COM

Thank you for your business!