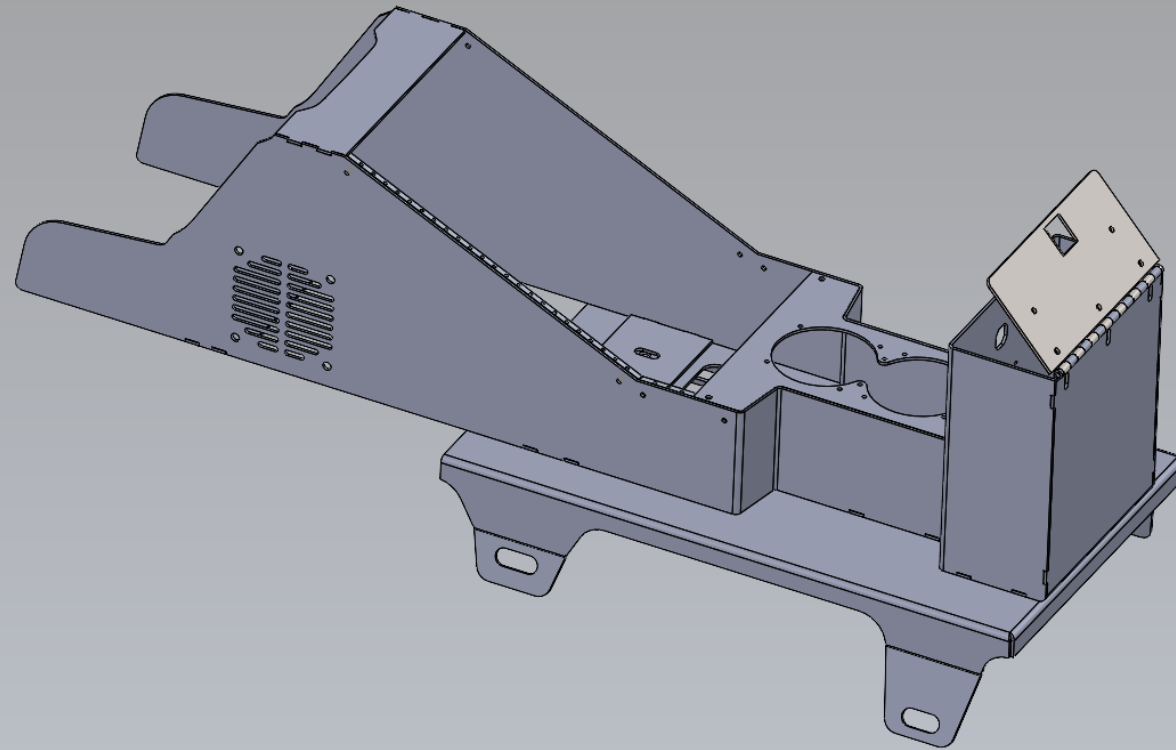


EMERGENCY EQUIPMENT

INV-CON-DN-CHV1500

INSTALLATION INSTRUCTIONS



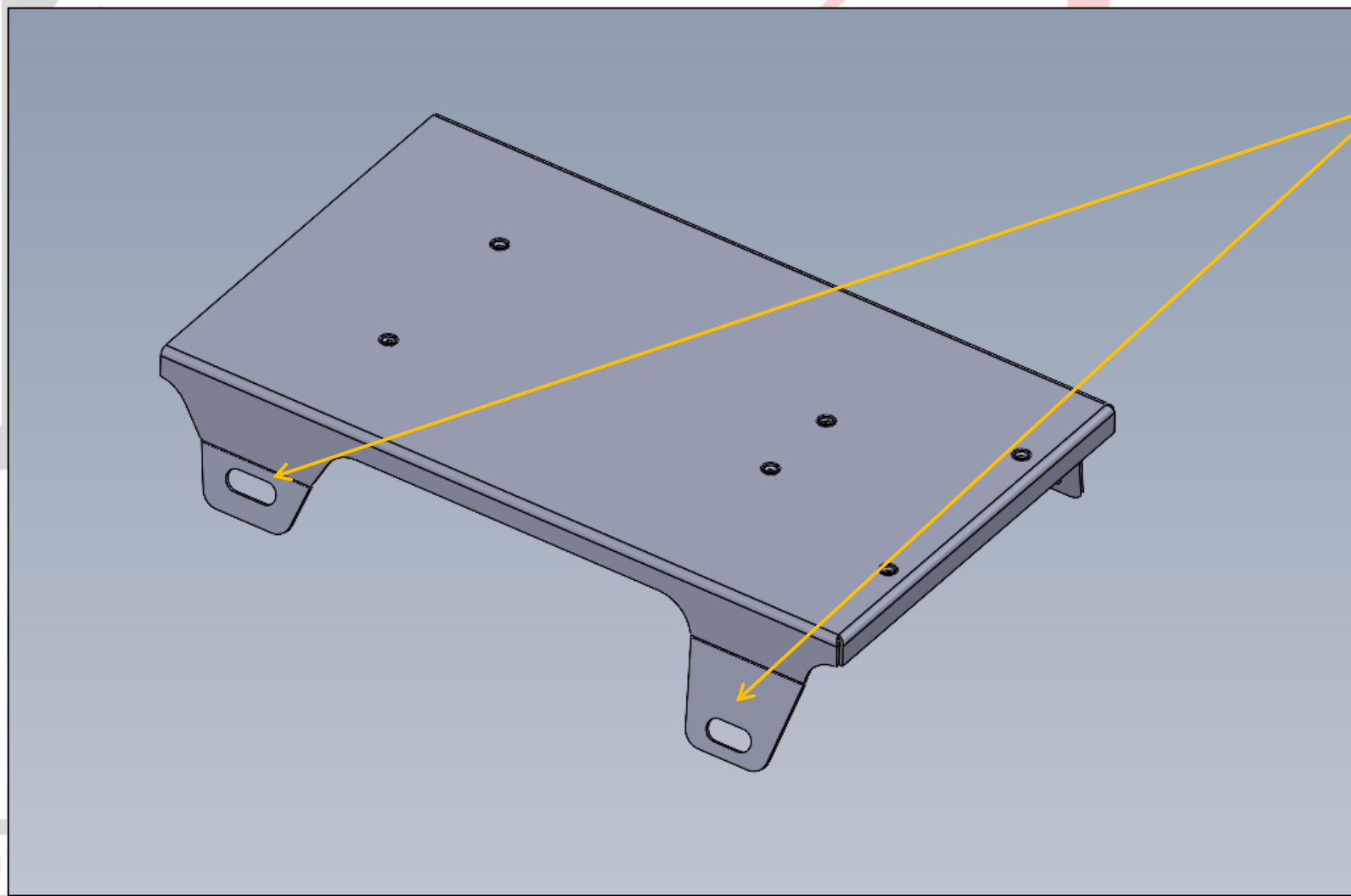
INSTALLATION OF CONSOLE WITH MOUNTING PLATE

INSTALL KIT INCLUDES:

FLOORPLATE
CONSOLE, CUPHOLDER, AND
ARMREST ASSEMBLY
6X $\frac{1}{4}$ -20 X $\frac{1}{2}$ " SCREWS
6X $\frac{1}{4}$ " WASHERS

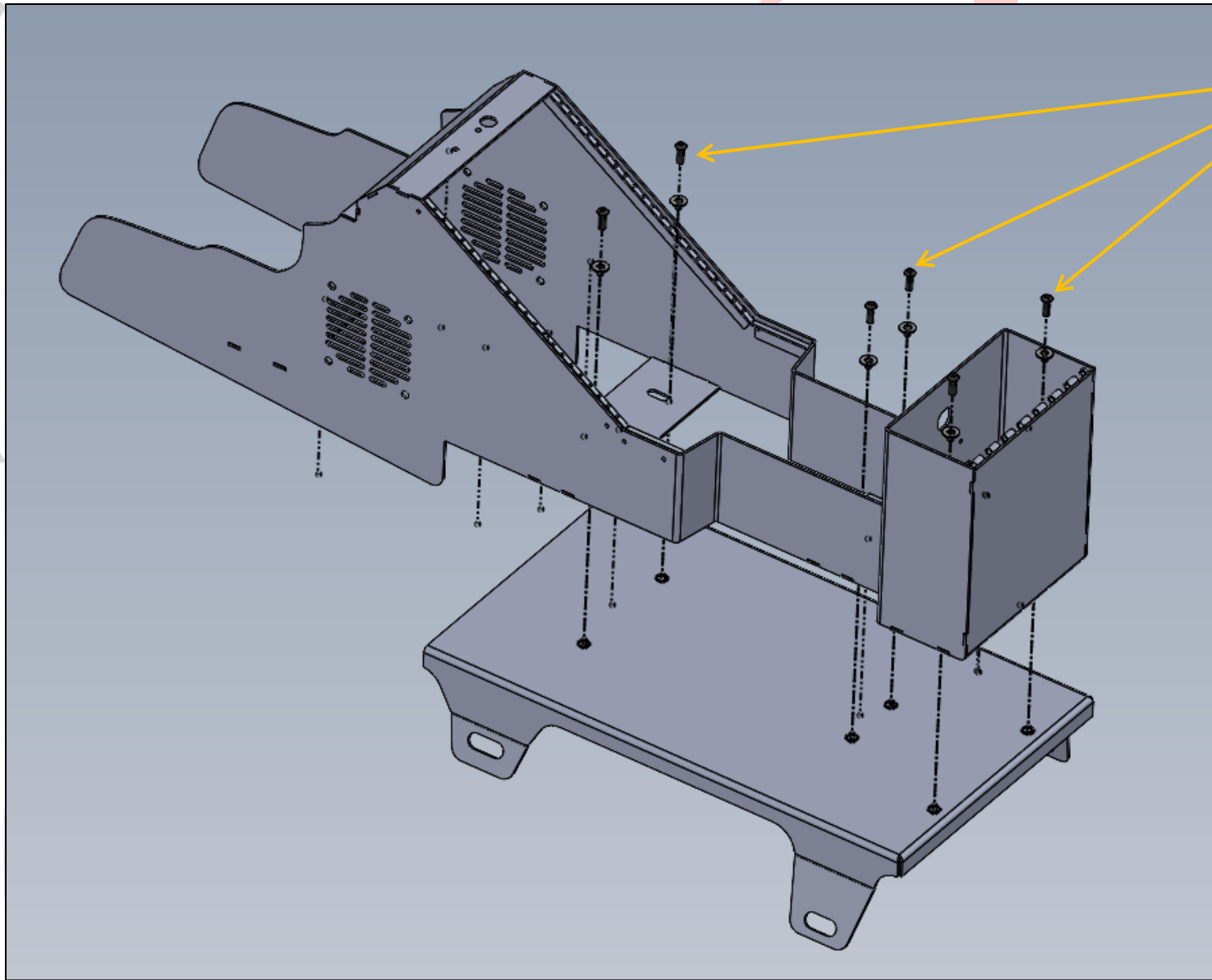
START INSTALLATION BY REMOVING THE FACTORY CONSOLE AND ARMREST. SET ASIDE MOUNTING HARDWARE TO USE FOR THE NEW CONSOLE INSTALL.

EMERGENCY EQUIPMENT

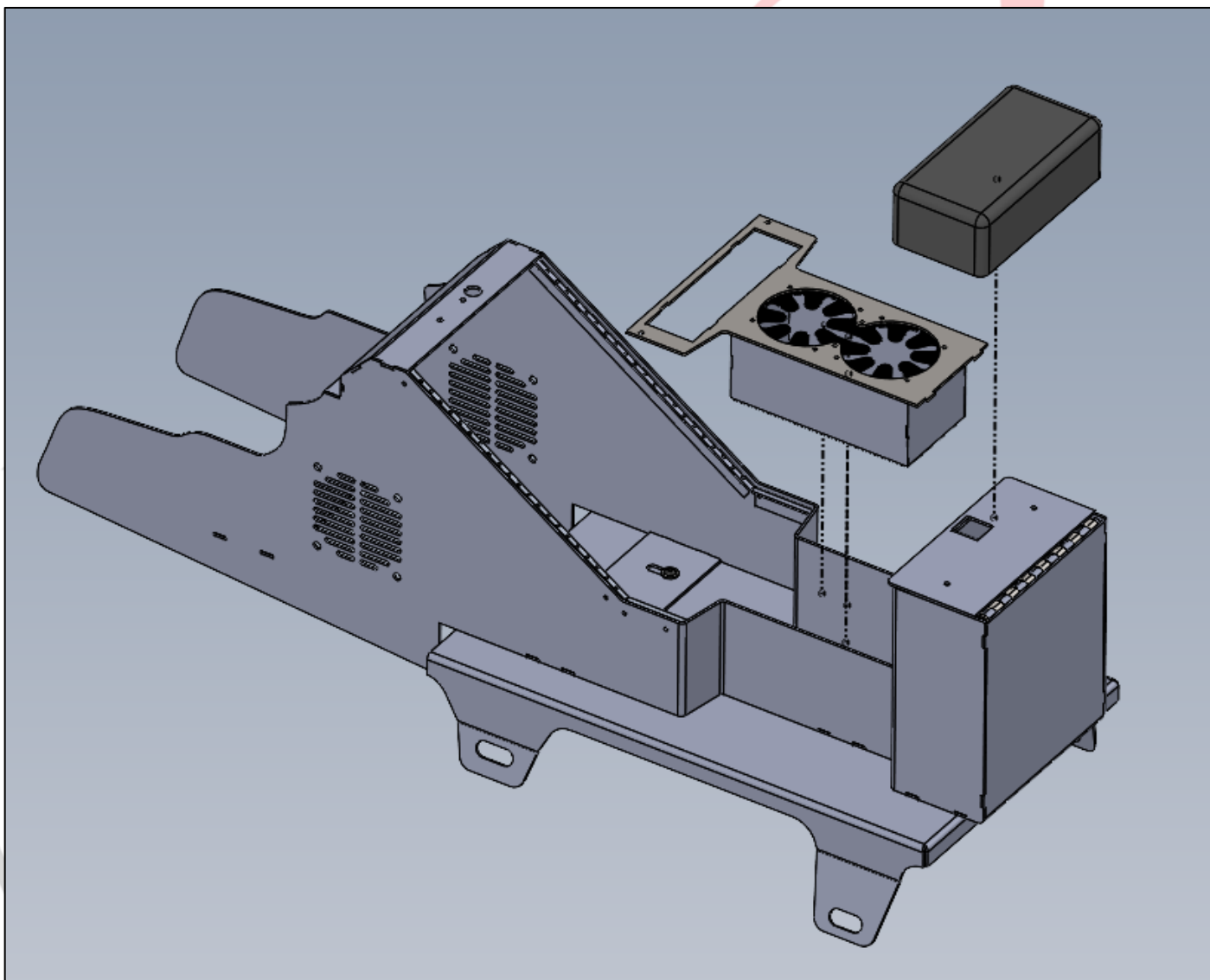


PLACE FLOOR PLATE OVER HOLES
USED FOR FACTORY CONSOLE.

SECURE CONSOLE BASE USING
FACTORY HARDWARE.



USING PROVIDED HARDWARE,
ATTACH CONSOLE BODY TO
FLOOR PLATE



INSTALL CUPHOLDER AND
ARMREST PAD TO COMPLETE
CONSOLE INSTALL.



1616 MARLBOROUGH AVE. RIVERSIDE, CA 92507

FOR TECHNICAL ASSISTANCE WITH INSTALLATION OR
OTHER QUESTIONS, PLEASE CALL (951) 222-2270

OR EMAIL SUPPORT@IDSMP.COM

Thank you for your business!