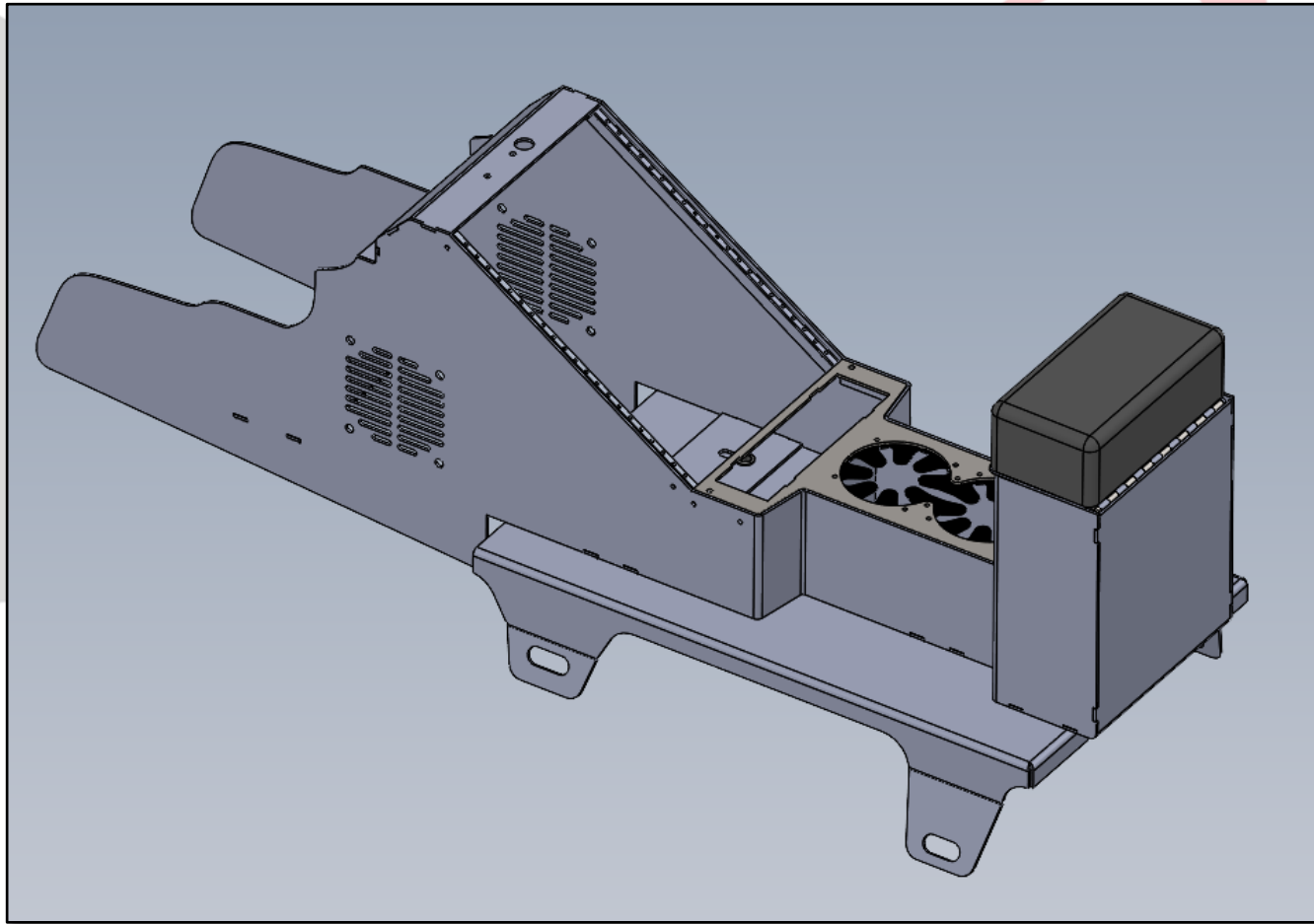


EMERGENCY EQUIPMENT

INV-CON-DN-TAH21

INSTALLATION INSTRUCTIONS



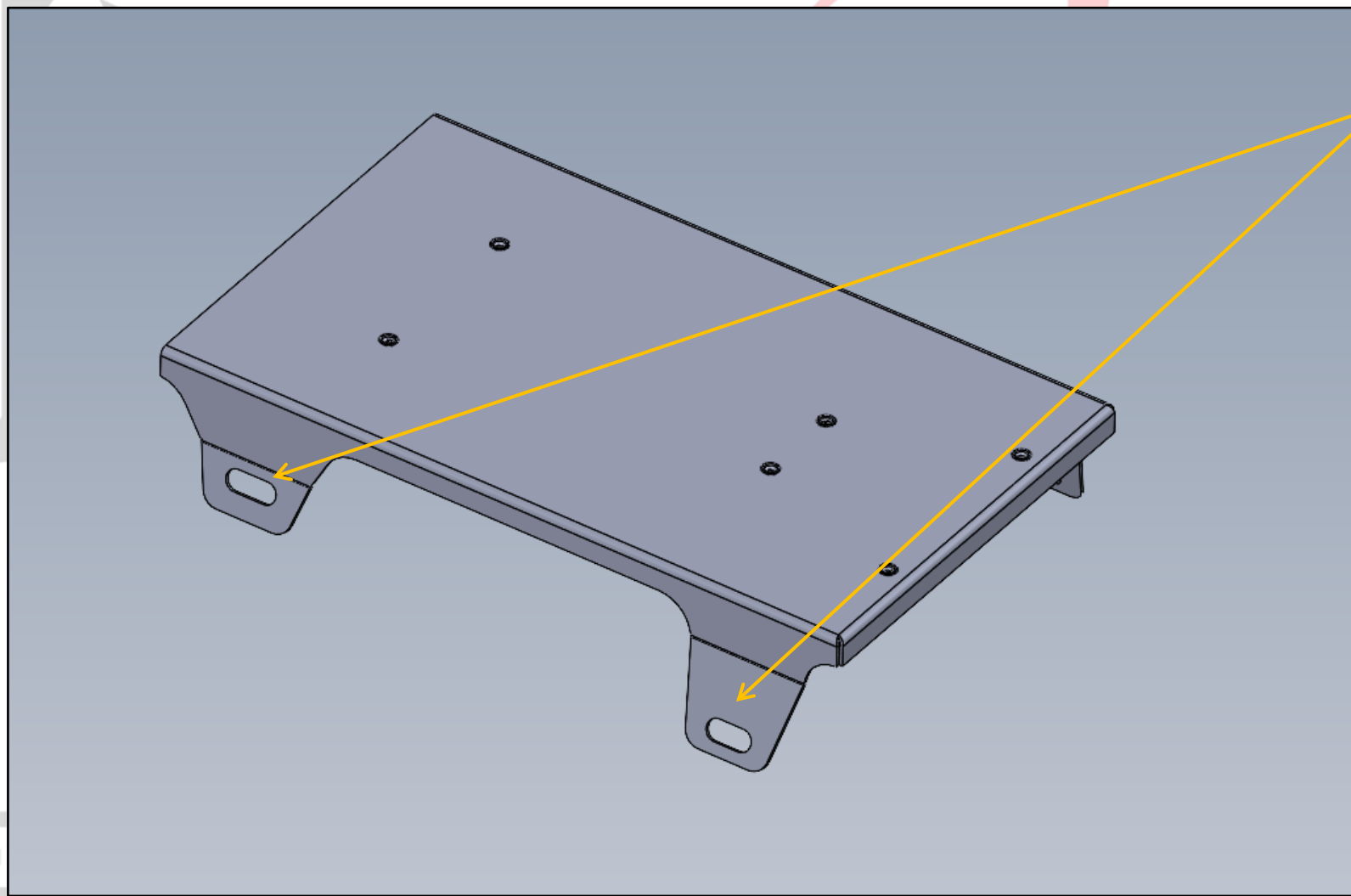
## INSTALLATION OF CONSOLE WITH MOUNTING PLATE

### INSTALL KIT INCLUDES:

FLOORPLATE  
CONSOLE, CUPHOLDER, AND  
ARMREST ASSEMBLY  
6X  $\frac{1}{4}$ -20 X  $\frac{1}{2}$ " SCREWS  
6X  $\frac{1}{4}$ " WASHERS

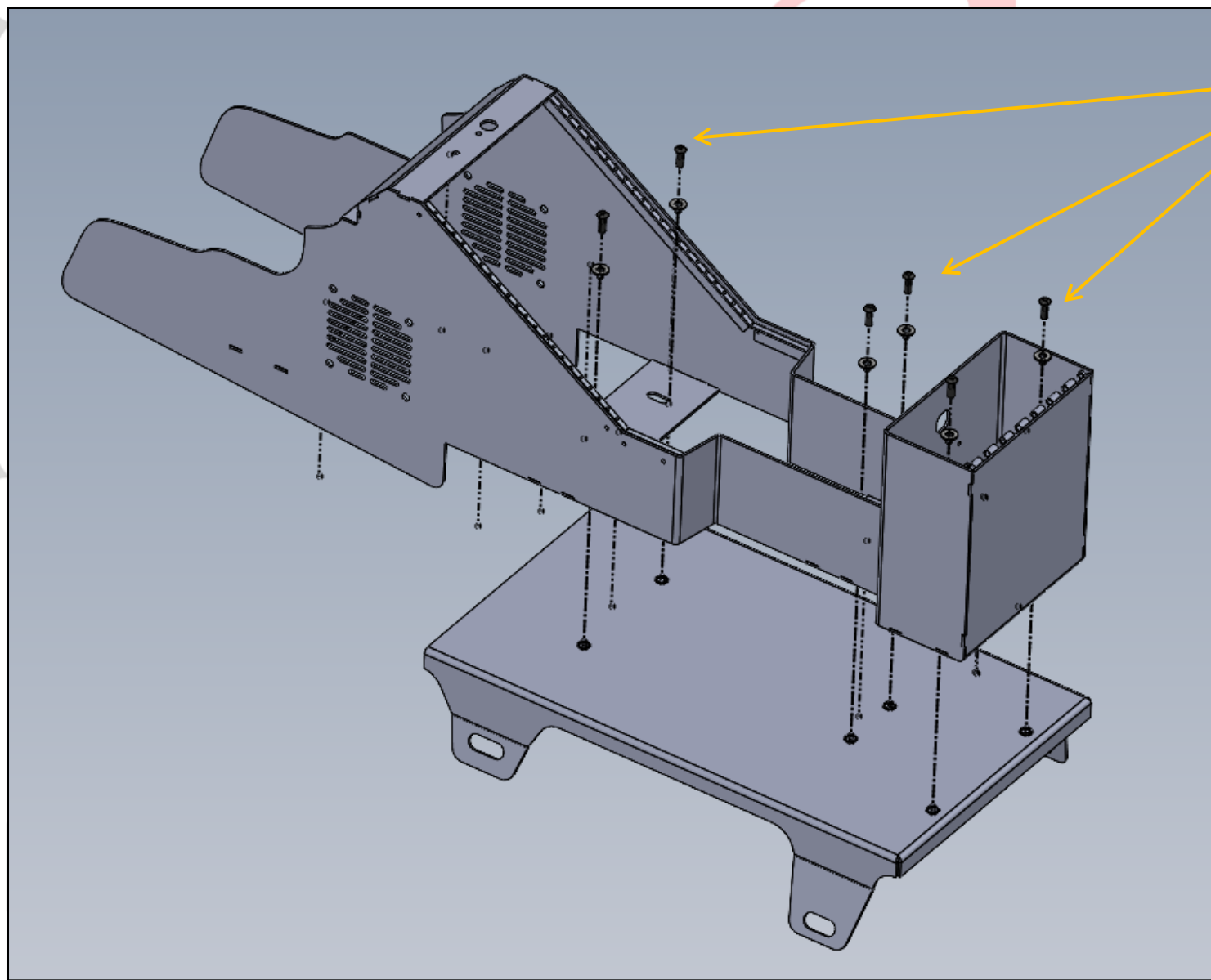
START INSTALLATION BY REMOVING THE  
FACTORY CONSOLE AND ARMREST. SET ASIDE  
MOUNTING HARDWARE TO USE FOR THE  
NEW CONSOLE INSTALL.

# EMERGENCY EQUIPMENT

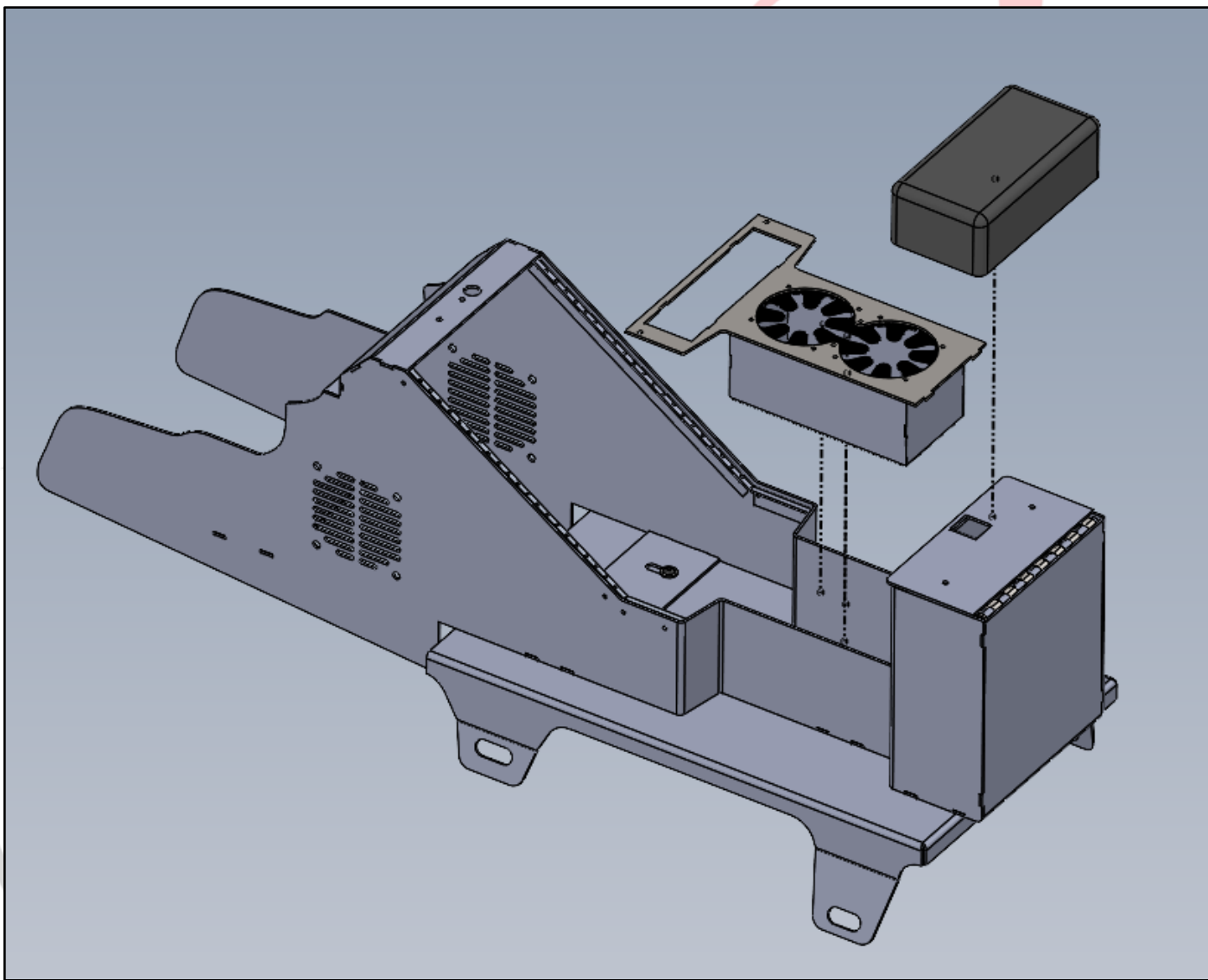


PLACE FLOOR PLATE OVER HOLES  
USED FOR FACTORY CONSOLE.

SECURE CONSOLE BASE USING  
FACTORY HARDWARE.



USING PROVIDED HARDWARE,  
ATTACH CONSOLE BODY TO  
FLOOR PLATE



INSTALL CUPHOLDER AND  
ARMREST PAD TO COMPLETE  
CONSOLE INSTALL.



1616 MARLBOROUGH AVE. RIVERSIDE, CA 92507

FOR TECHNICAL ASSISTANCE WITH INSTALLATION OR  
OTHER QUESTIONS, PLEASE CALL (951) 222-2270

OR EMAIL [SUPPORT@IDSMP.COM](mailto:SUPPORT@IDSMP.COM)

*Thank you for your business!*