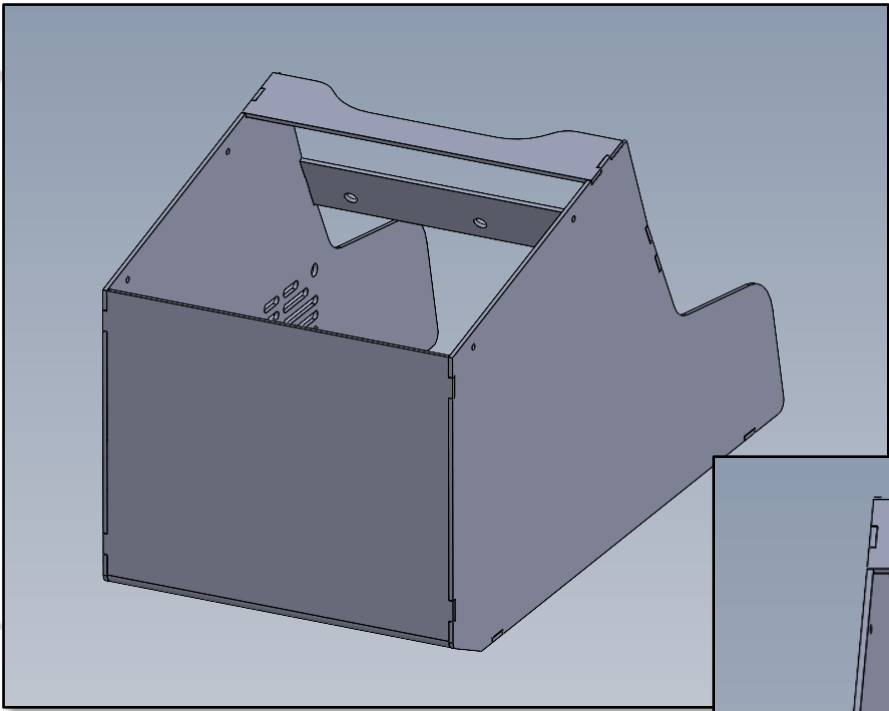


EMERGENCY EQUIPMENT

INV-CON-SILVERADO 2500

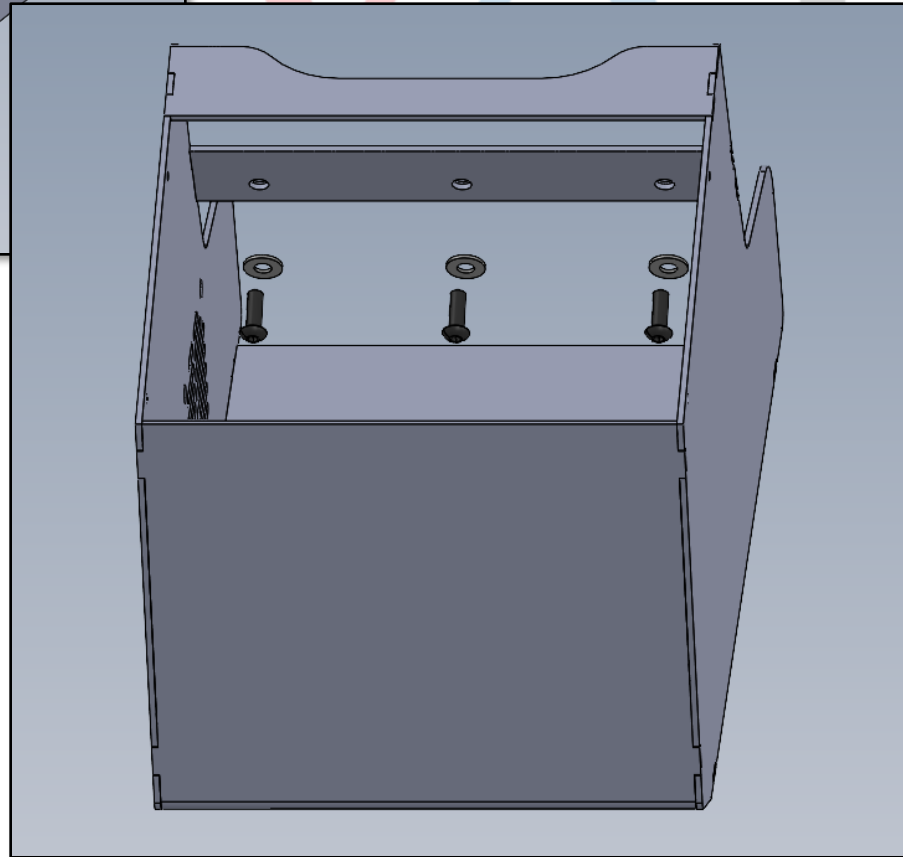
INSTALLATION INSTRUCTIONS



INSTALLATION OF CONSOLE IN SILVERADO 2500

INSTALL KIT INCLUDES:

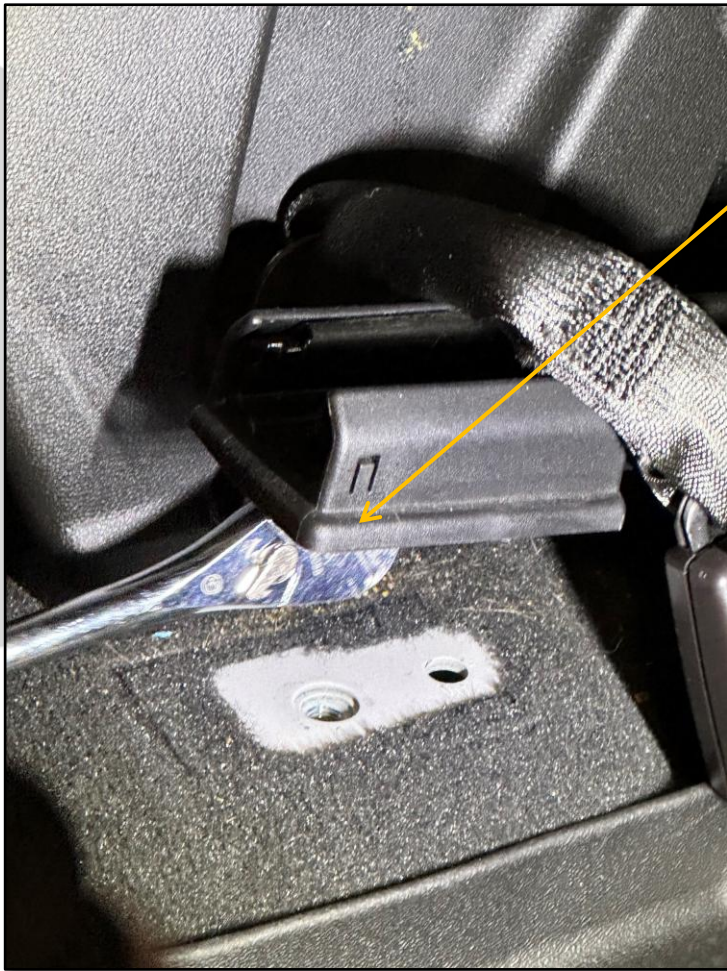
CONSOLE
MOUNTING HARDWARE



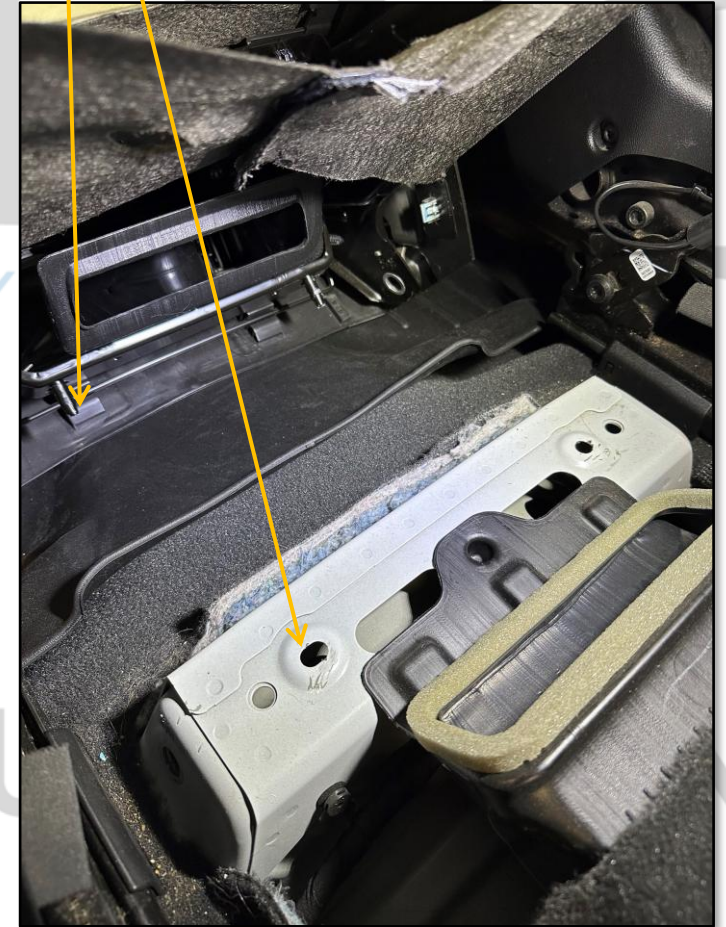
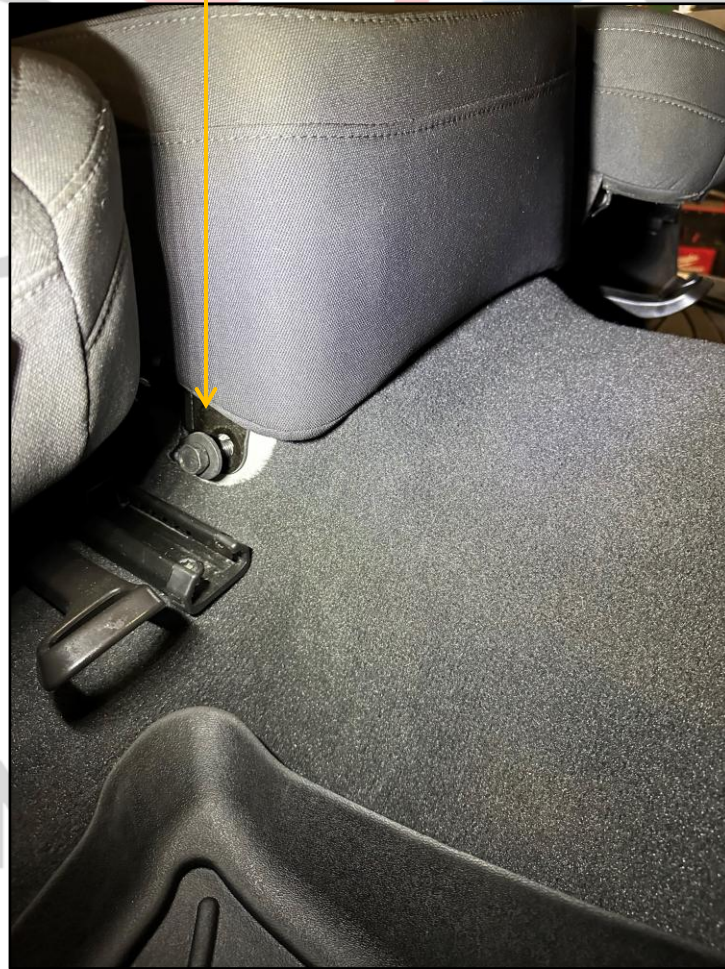
REMOVE SIDE TRIM PANELS ON FRONT SEATS, BOTH DRIVER AND PASSENGER

UNBOLT FRONT AND REAR BOLTS ON SEAT RAILS AND MOVE AWAY FROM CENTER SEAT TO ACCESS BOLTS





REMOVE FRONT AND REAR MOUNTING BOLTS FOR CENTER SEAT. SEAT THEN WILL HAVE TO BE LIFTED SLIGHTLY TO CLEAR ALIGNMENT PINS. MOVE SEAT TO THE BACK TO MAKE ROOM FOR CONSOLE.





POSITION CONSOLE AS SHOWN.
WITH THREE HOLES IN FRONT STRAP, ATTACH
WITH PROVIDED HARDWARE TO DASH.
REVERSE SEAT REMOVAL PROCEDURE TO
COMPLETE INSTALL.





1616 MARLBOROUGH AVE. RIVERSIDE, CA 92507

FOR TECHNICAL ASSISTANCE WITH INSTALLATION OR
OTHER QUESTIONS, PLEASE CALL (951) 222-2270

OR EMAIL SUPPORT@IDSMP.COM

Thank you for your business!