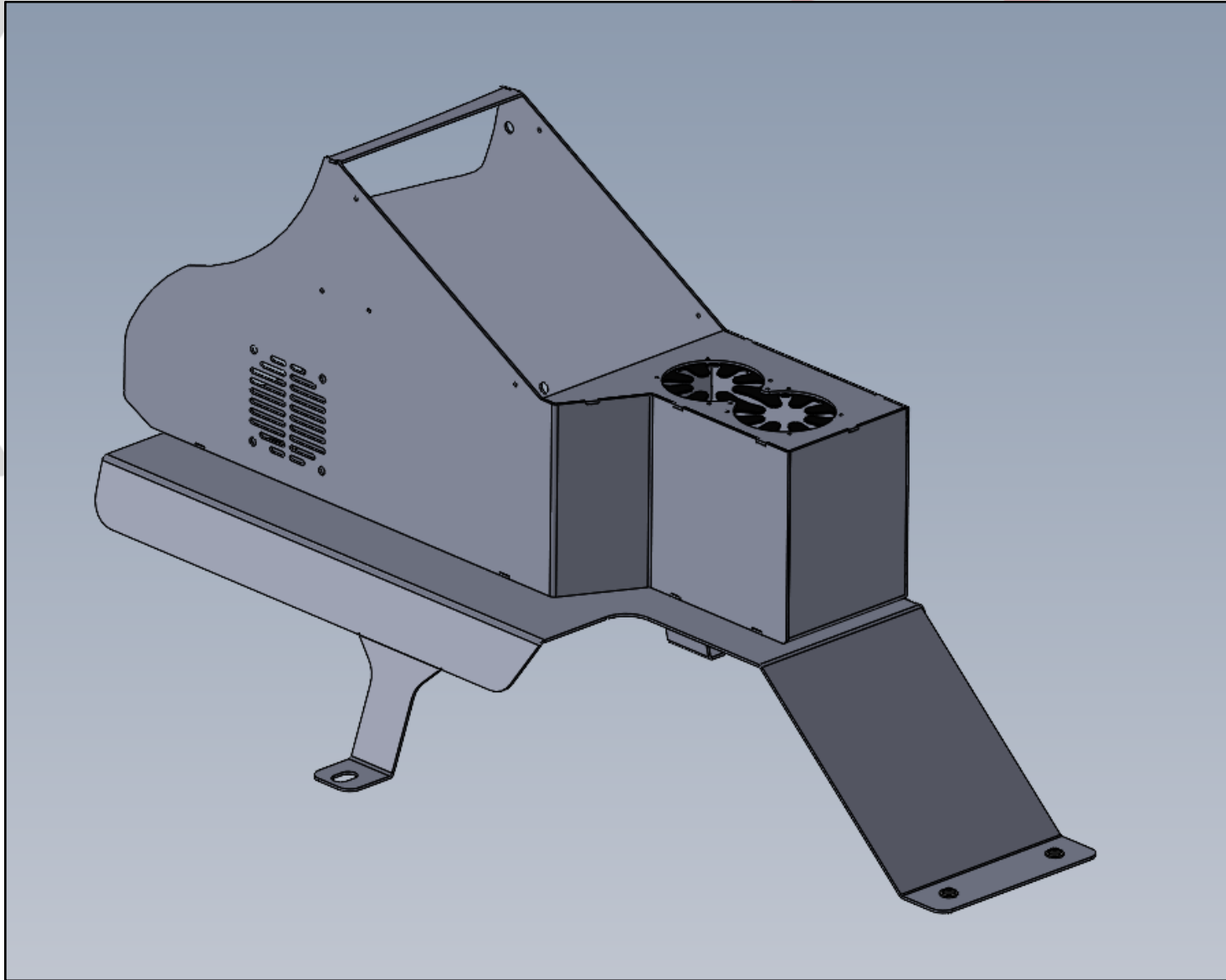


EMERGENCY EQUIPMENT

INV-CON-TRANSIT

INSTALLATION INSTRUCTIONS



## INSTALLATION OF CONSOLE WITH MOUNTING PLATE

INSTALL KIT INCLUDES:

CONSOLE

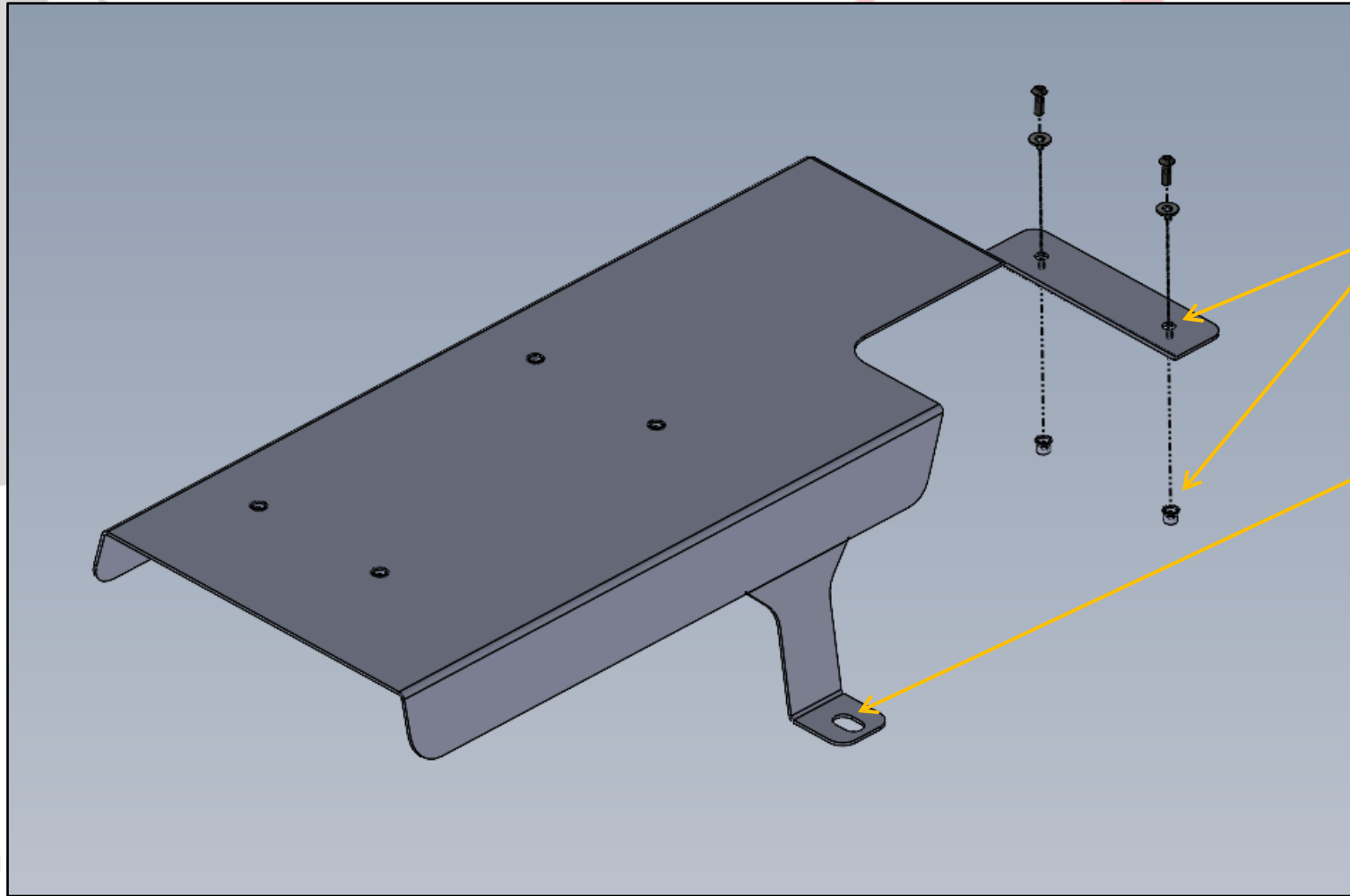
FLOOR PLATE

6X  $\frac{1}{4}$ -20 X  $\frac{1}{2}$ " SCREWS

6X  $\frac{1}{4}$ " WASHERS

2X  $\frac{1}{4}$ -20 NUTSERTS

EQUIPMENT

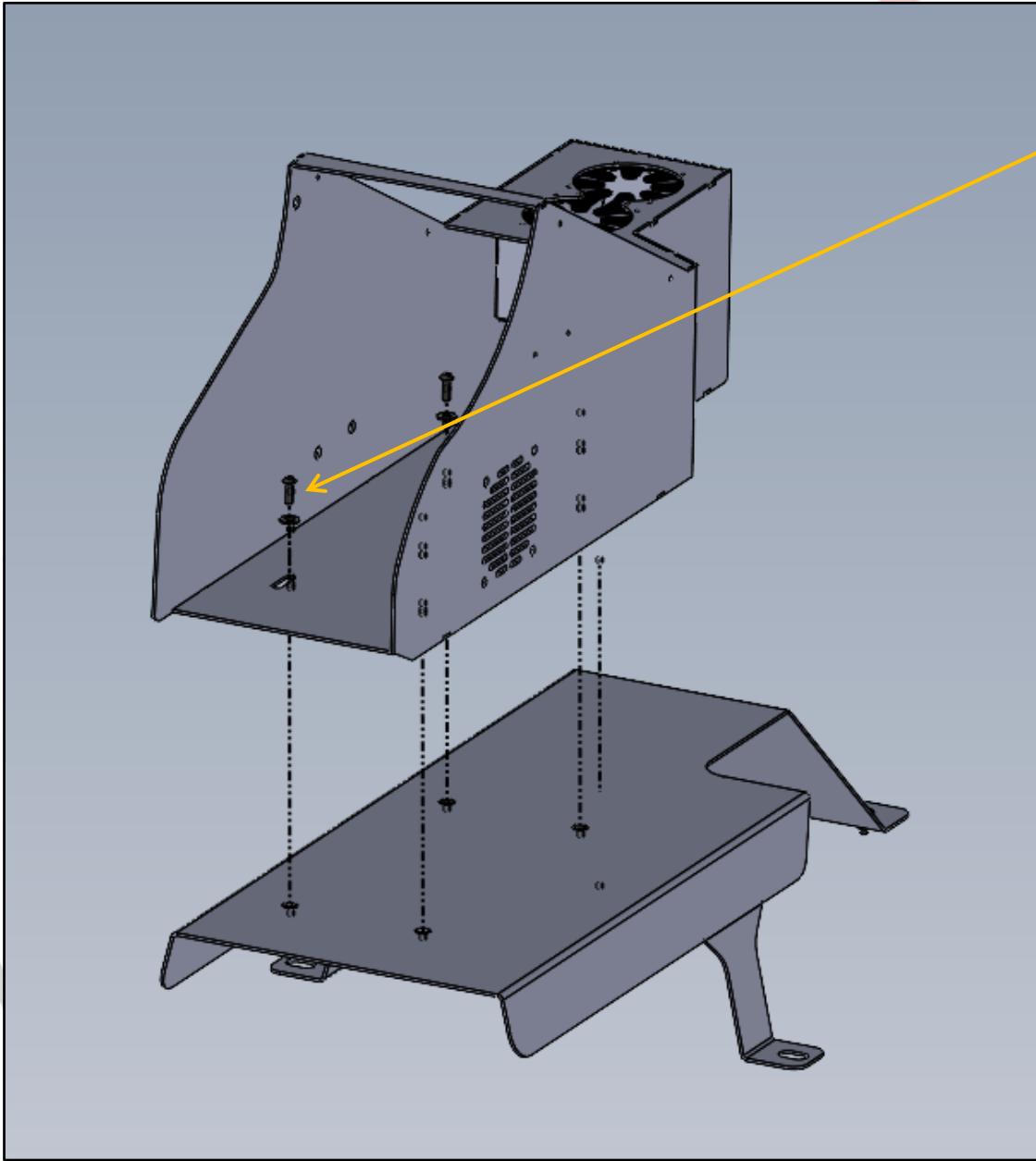


PLACE FLOOR PLATE OVER FACTORY MOUNTING HOLES

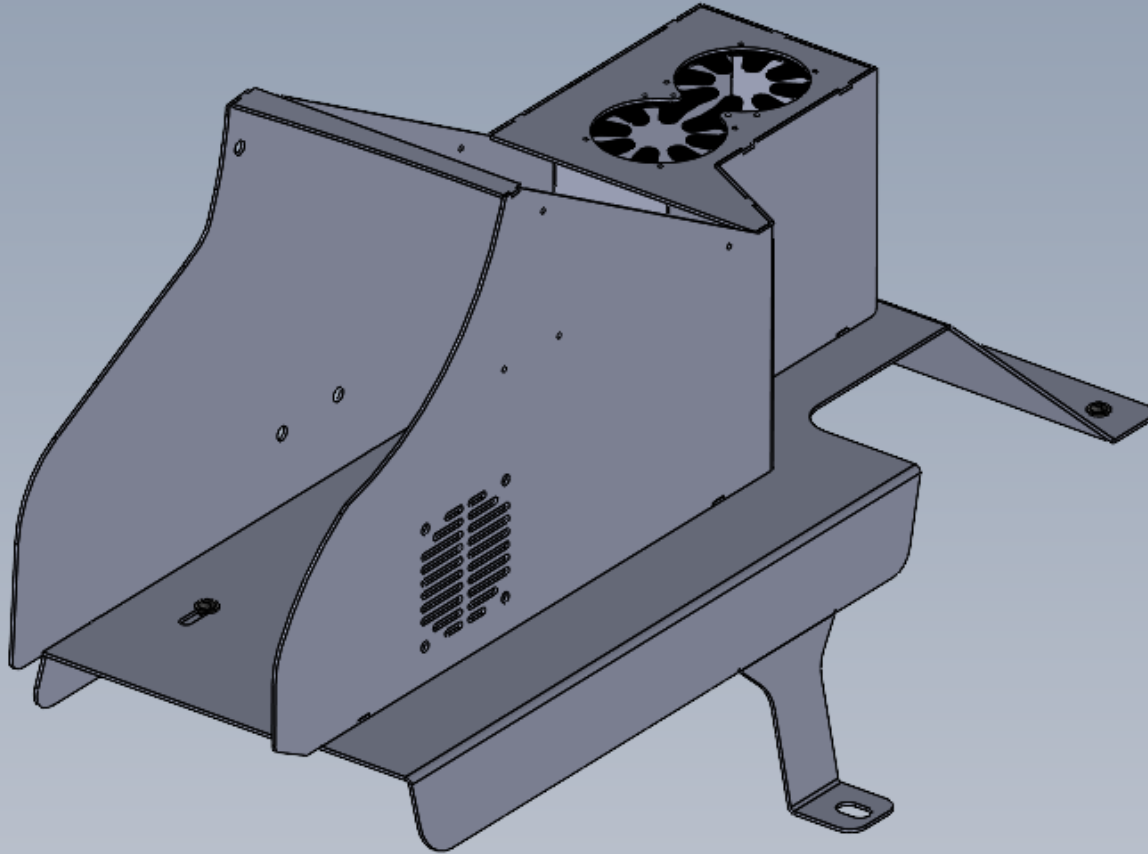
MARK AND DRILL REAR HOLES, INSTALL PROVIDED NUTSERTS IN FLOOR.

BOLT FLOOR PLATE TO FLOOR USING FACTORY HARDWARE AND PROVIDED SCREWS AND WASHERS.

ATTACH CONSOLE TO FLOOR PLATE USING PROVIDED SCREWS AND WASHERS. BOLT TO PRE-INSTALLED NUTSERTS AND ADJUST POSITION TO CLOSE GAP WITH DASH PANELS.



INSTALLATION IS COMPLETE





1616 MARLBOROUGH AVE. RIVERSIDE, CA 92507

FOR TECHNICAL ASSISTANCE WITH INSTALLATION OR  
OTHER QUESTIONS, PLEASE CALL (951) 222-2270

OR EMAIL [SUPPORT@IDSMP.COM](mailto:SUPPORT@IDSMP.COM)

*Thank you for your business!*