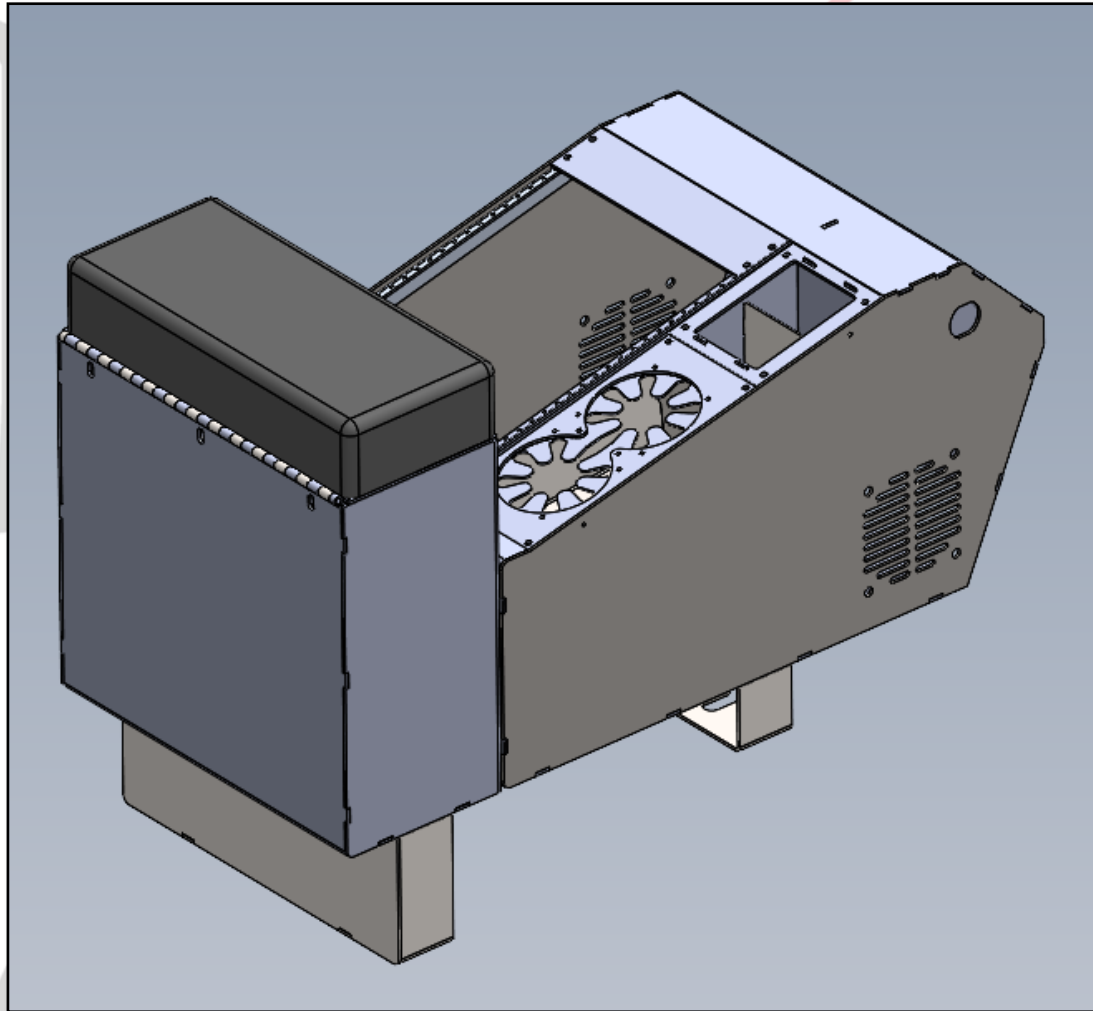


EMERGENCY EQUIPMENT

INV-CON-WDB-SLOPED

INSTALLATION INSTRUCTIONS

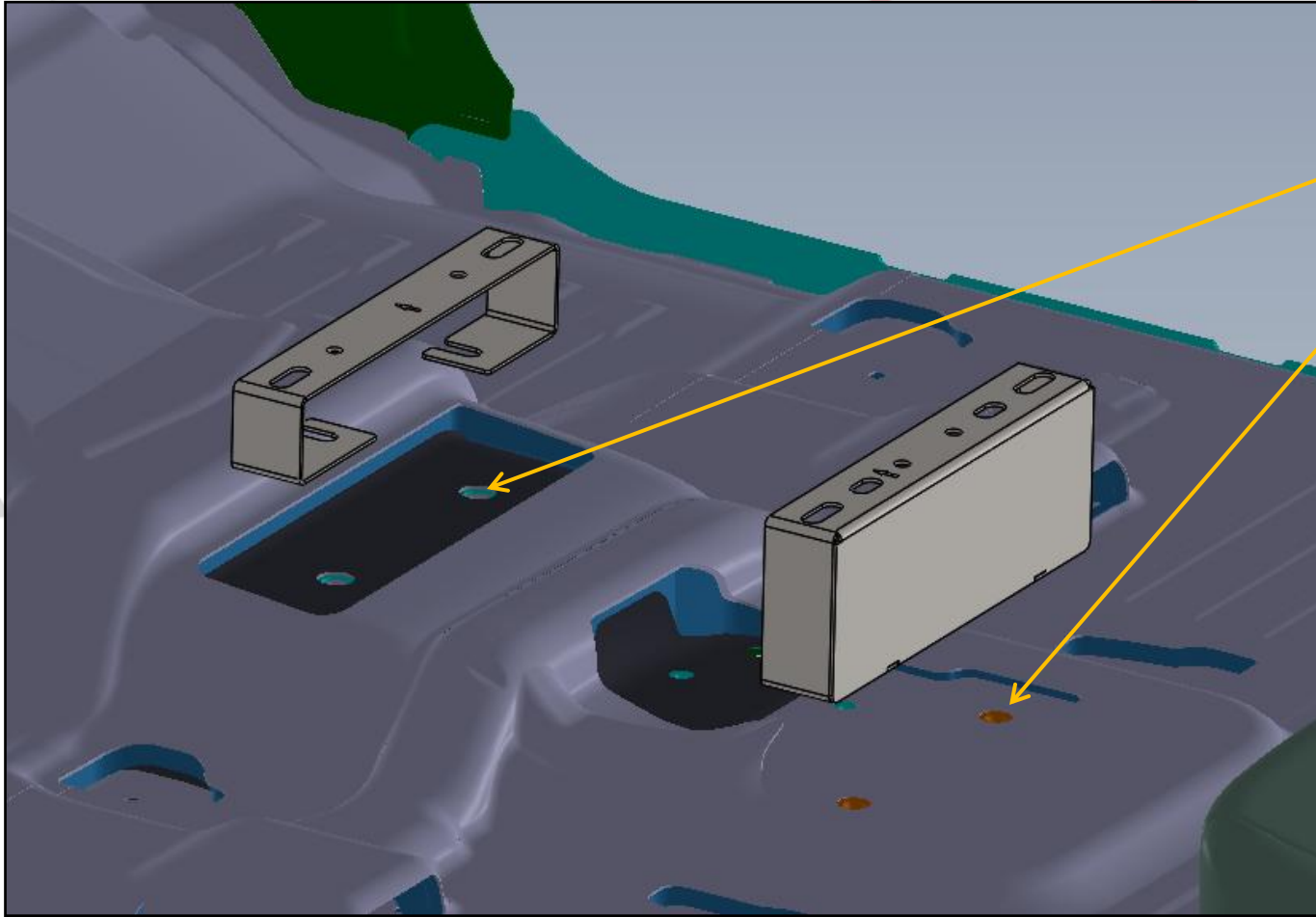


## INSTALLATION OF CONSOLE WITH MOUNTING FEET

### INSTALL KIT INCLUDES:

MOUNTING FEET  
CONSOLE, CUPHOLDER, AND  
ARMREST ASSEMBLY  
4X  $\frac{1}{4}$ -20 X  $\frac{1}{2}$ " SCREWS  
4X  $\frac{1}{4}$ " WASHERS

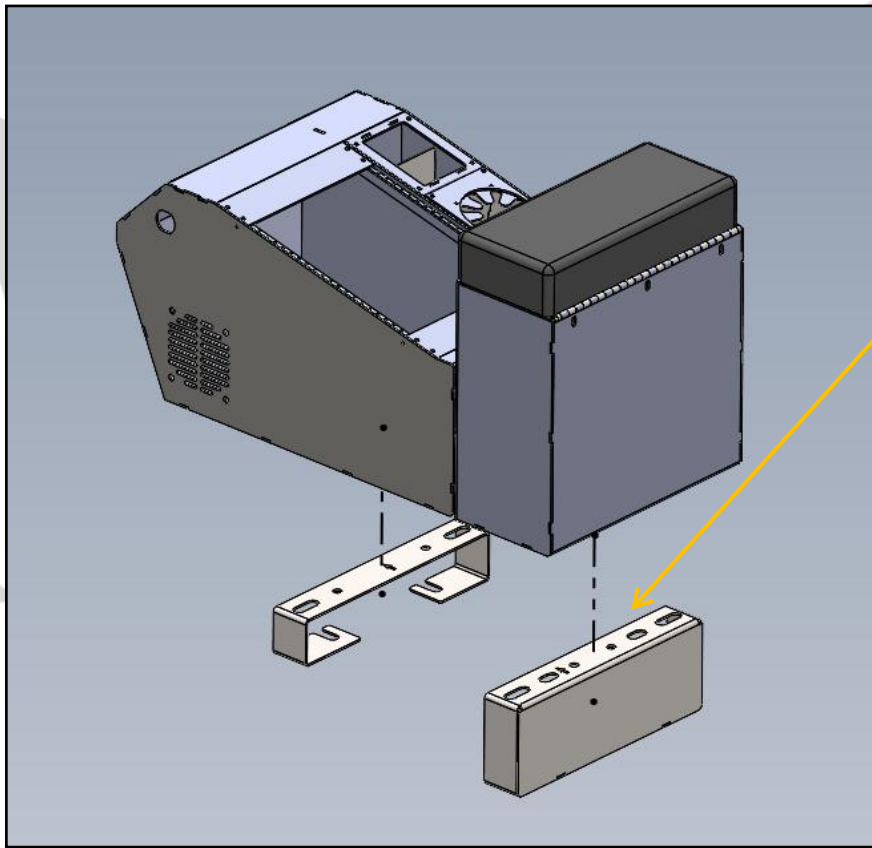
START INSTALLATION BY REMOVING THE  
FACTORY CONSOLE AND ARMREST. SET ASIDE  
MOUNTING HARDWARE TO USE FOR THE  
NEW CONSOLE INSTALL.



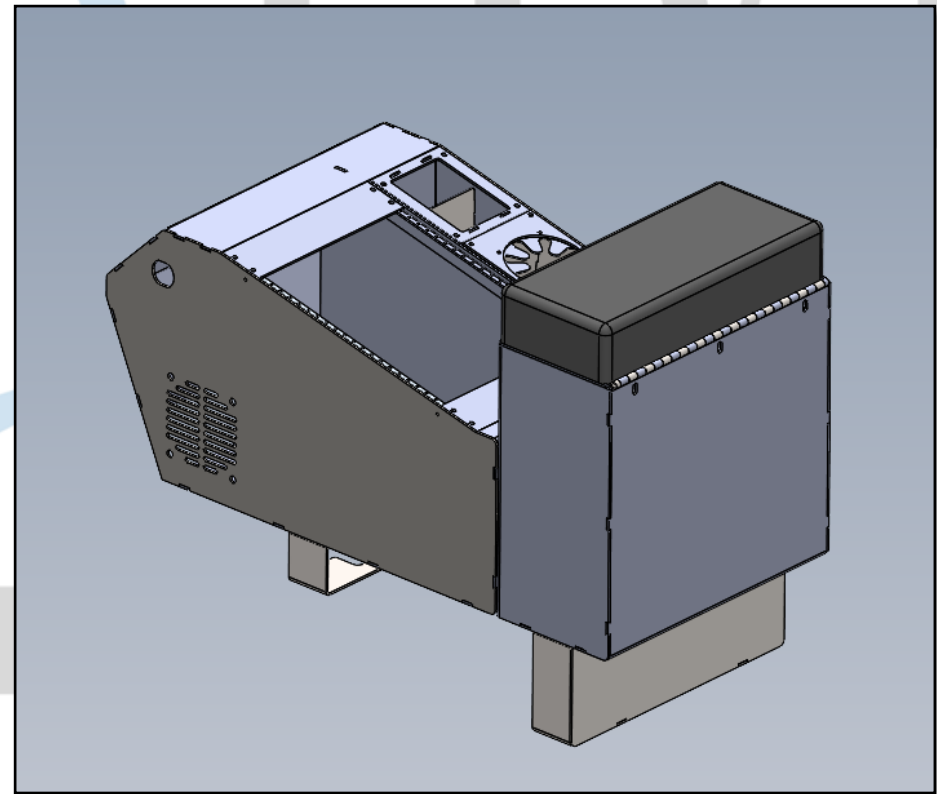
PLACE MOUNTING FEET OVER  
HOLES USED FOR FACTORY  
CONSOLE.

SECURE CONSOLE FEET USING  
FACTORY HARDWARE.

EMERGENCY EQUIPMENT



USING PROVIDED HARDWARE,  
ATTACH CONSOLE BODY TO  
FLOOR PLATE





1616 MARLBOROUGH AVE. RIVERSIDE, CA 92507

FOR TECHNICAL ASSISTANCE WITH INSTALLATION OR  
OTHER QUESTIONS, PLEASE CALL (951) 222-2270

OR EMAIL [SUPPORT@IDSMP.COM](mailto:SUPPORT@IDSMP.COM)

*Thank you for your business!*