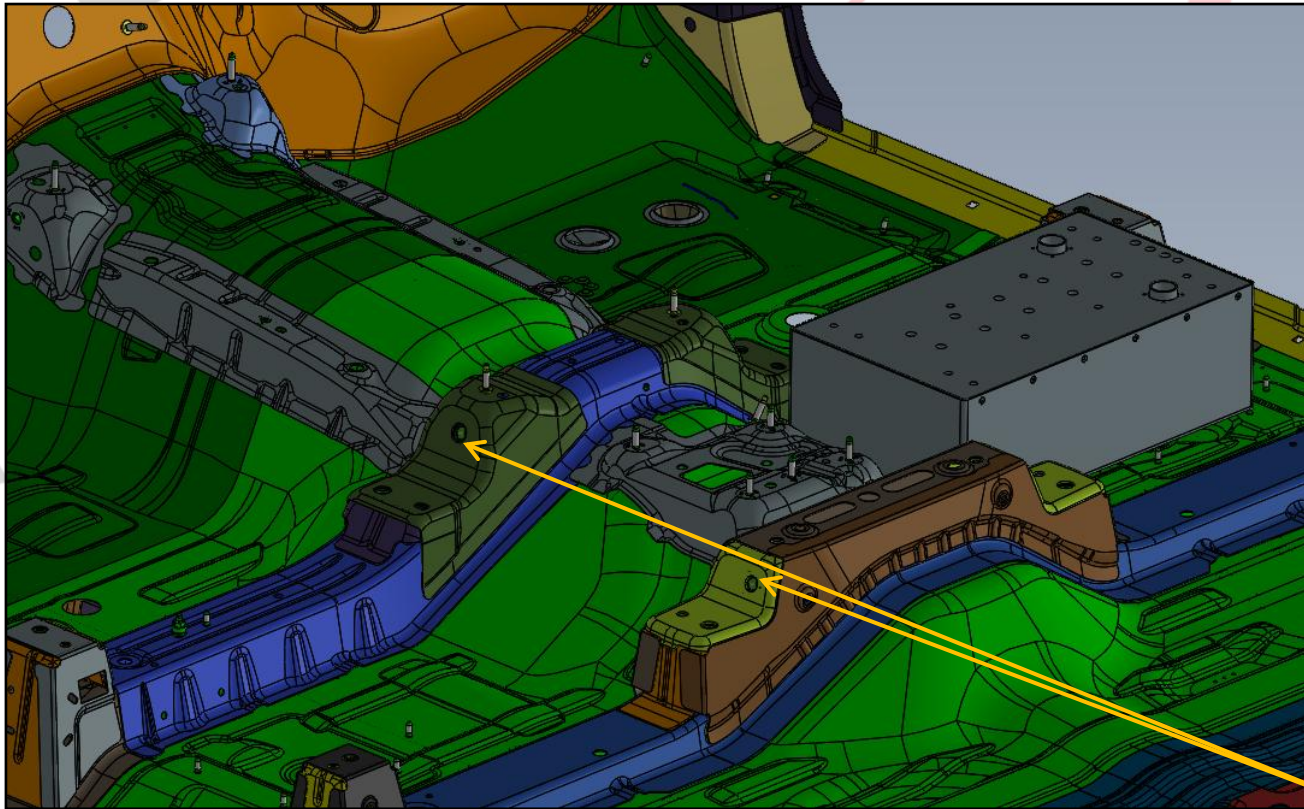


EMERGENCY EQUIPMENT

INV-CON-WDB-TAH21

INSTALLATION INSTRUCTIONS



## INSTALLATION OF WIDEBODY TAHOE CONSOLE

INSTALL KIT INCLUDES:

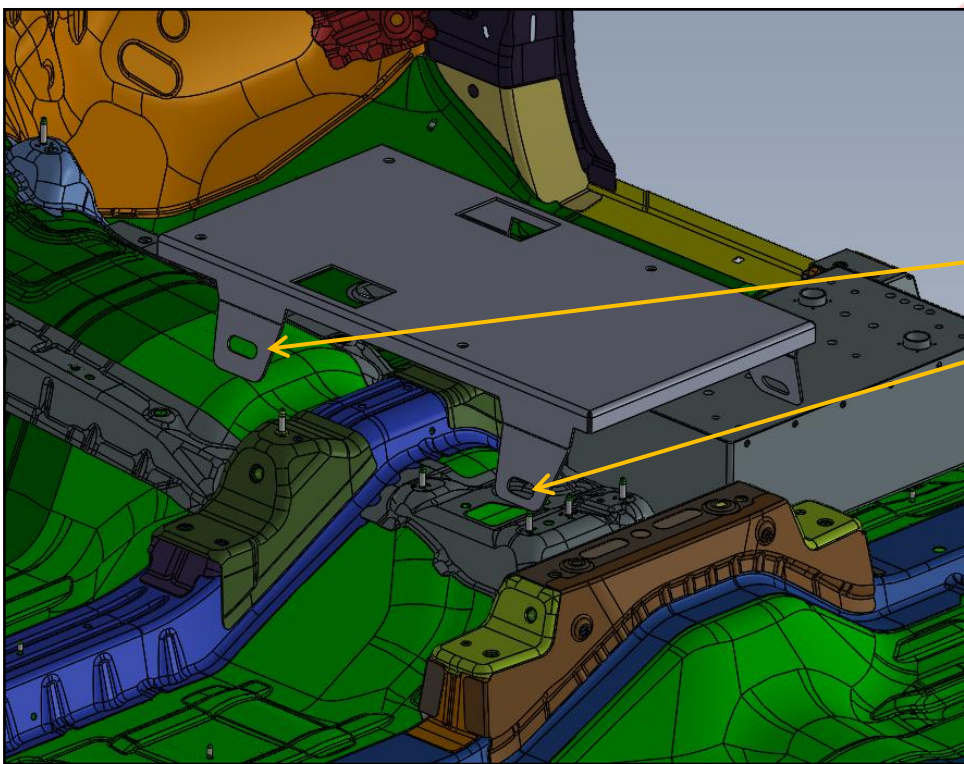
FLOORPLATE  
CONSOLE, CUPHOLDER, AND  
ARMREST

4X  $\frac{1}{4}$ -20 X  $\frac{1}{2}$ " SCREWS

4X  $\frac{1}{4}$ " WASHERS

START INSTALLATION BY REMOVING THE  
FACTORY CONSOLE AND ARMREST. SET ASIDE  
MOUNTING HARDWARE TO USE FOR THE  
NEW CONSOLE INSTALL.

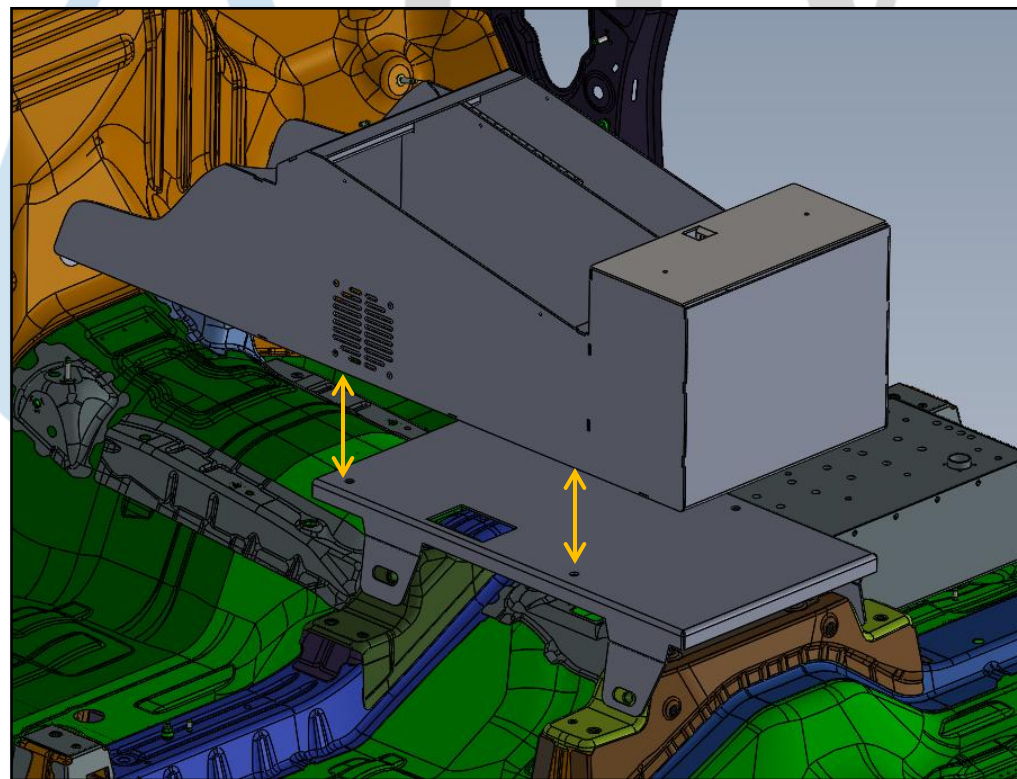
EMERGENCY EQUIPMENT



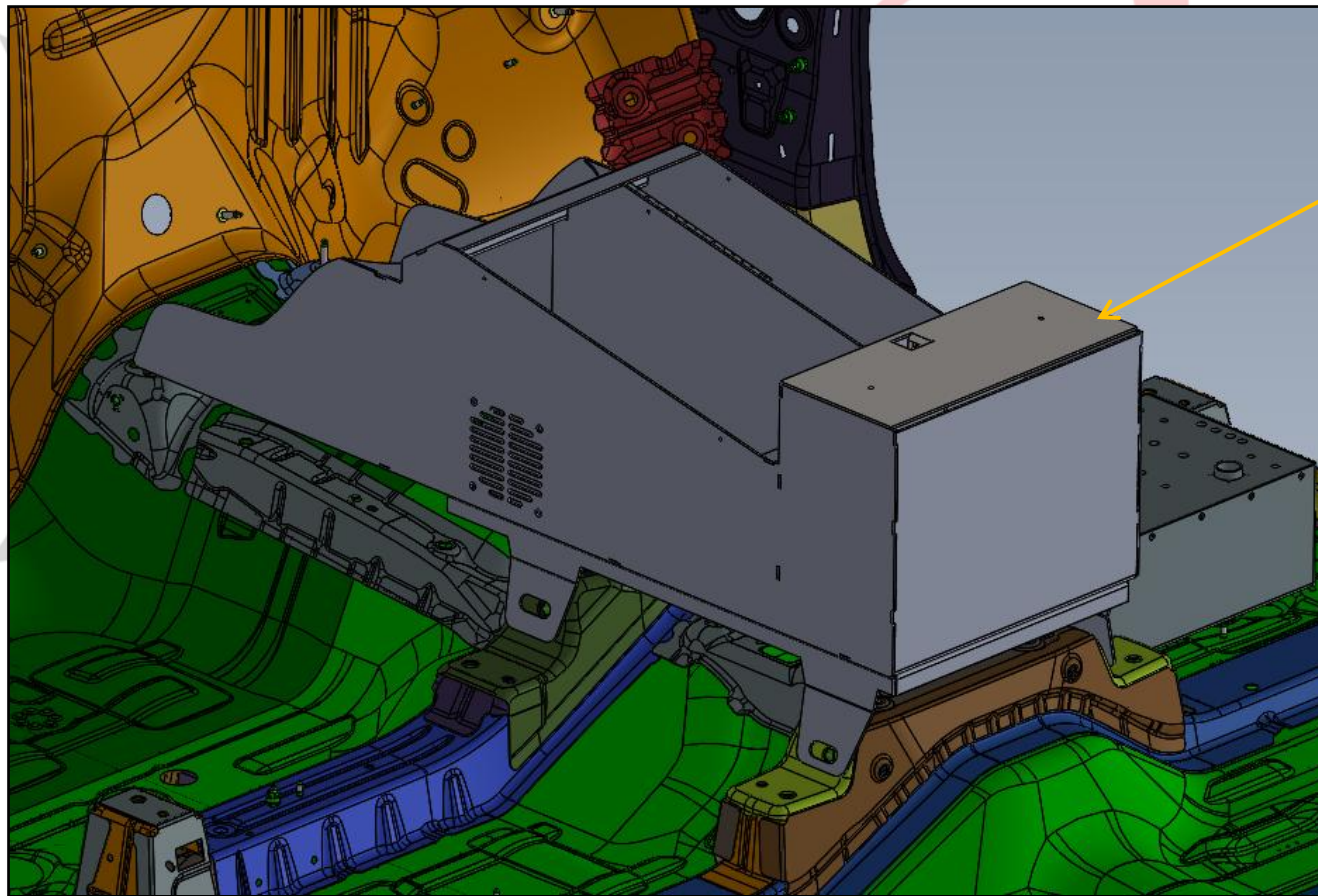
PLACE FLOOR PLATE OVER HOLES  
USED FOR FACTORY CONSOLE.

SECURE CONSOLE BASE USING  
FACTORY HARDWARE.

SECURE CONSOLE TO FLOORPLATE  
WITH PROVIDED HARDWARE







ATTACH ARM REST PAD AND ADD  
RADIOS AND ELECTRONICS TO  
COMPLETE INSTALL.

EMERGENCY EQUIPMENT



1616 MARLBOROUGH AVE. RIVERSIDE, CA 92507

FOR TECHNICAL ASSISTANCE WITH INSTALLATION OR  
OTHER QUESTIONS, PLEASE CALL (951) 222-2270

OR EMAIL [SUPPORT@IDSMP.COM](mailto:SUPPORT@IDSMP.COM)

*Thank you for your business!*