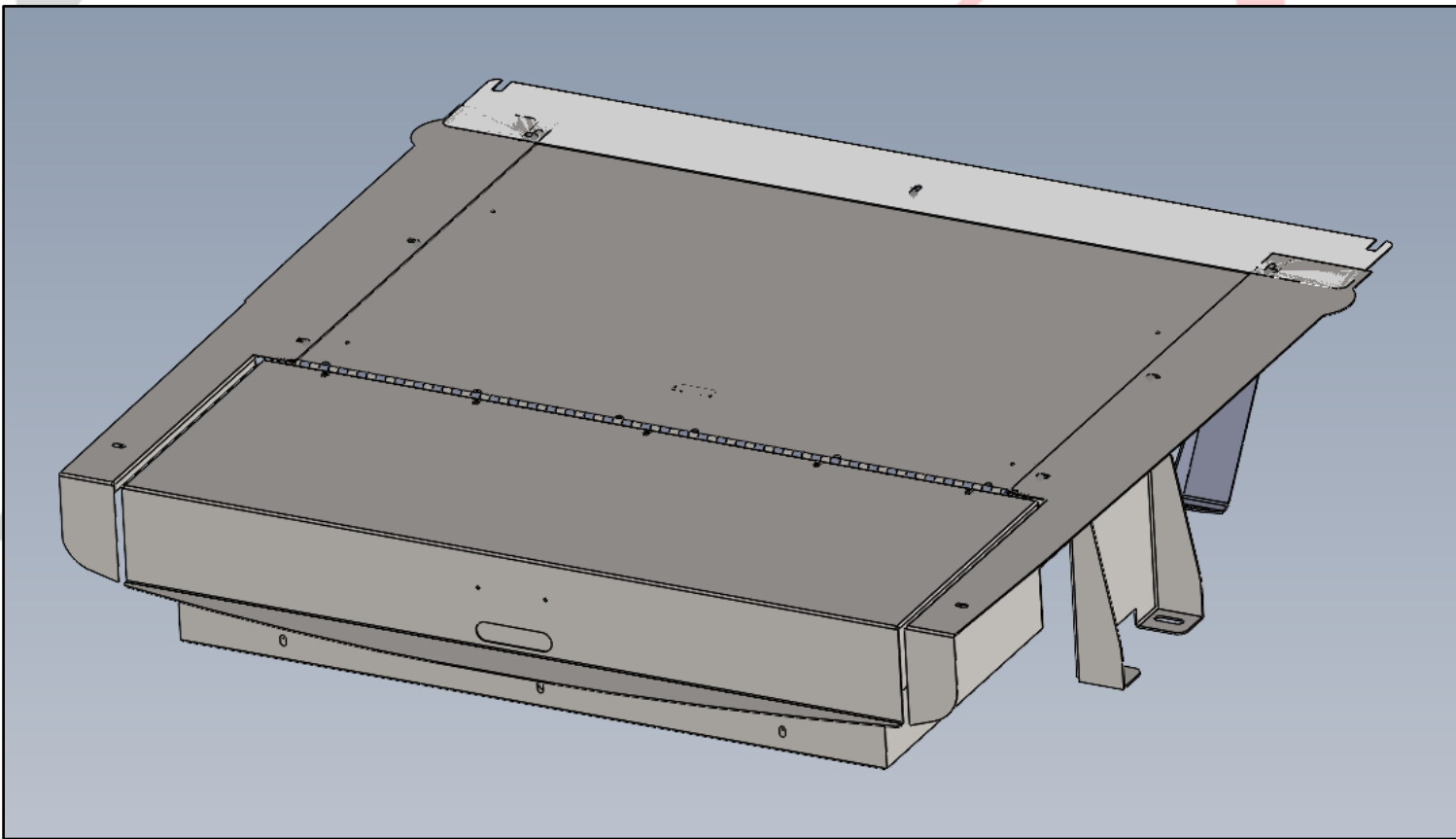


EMERGENCY EQUIPMENT

INV-ES-FF-ET-DUR

INSTALLATION INSTRUCTIONS



INSTALLATION OF FALSE FLOOR IN FORD PIU20

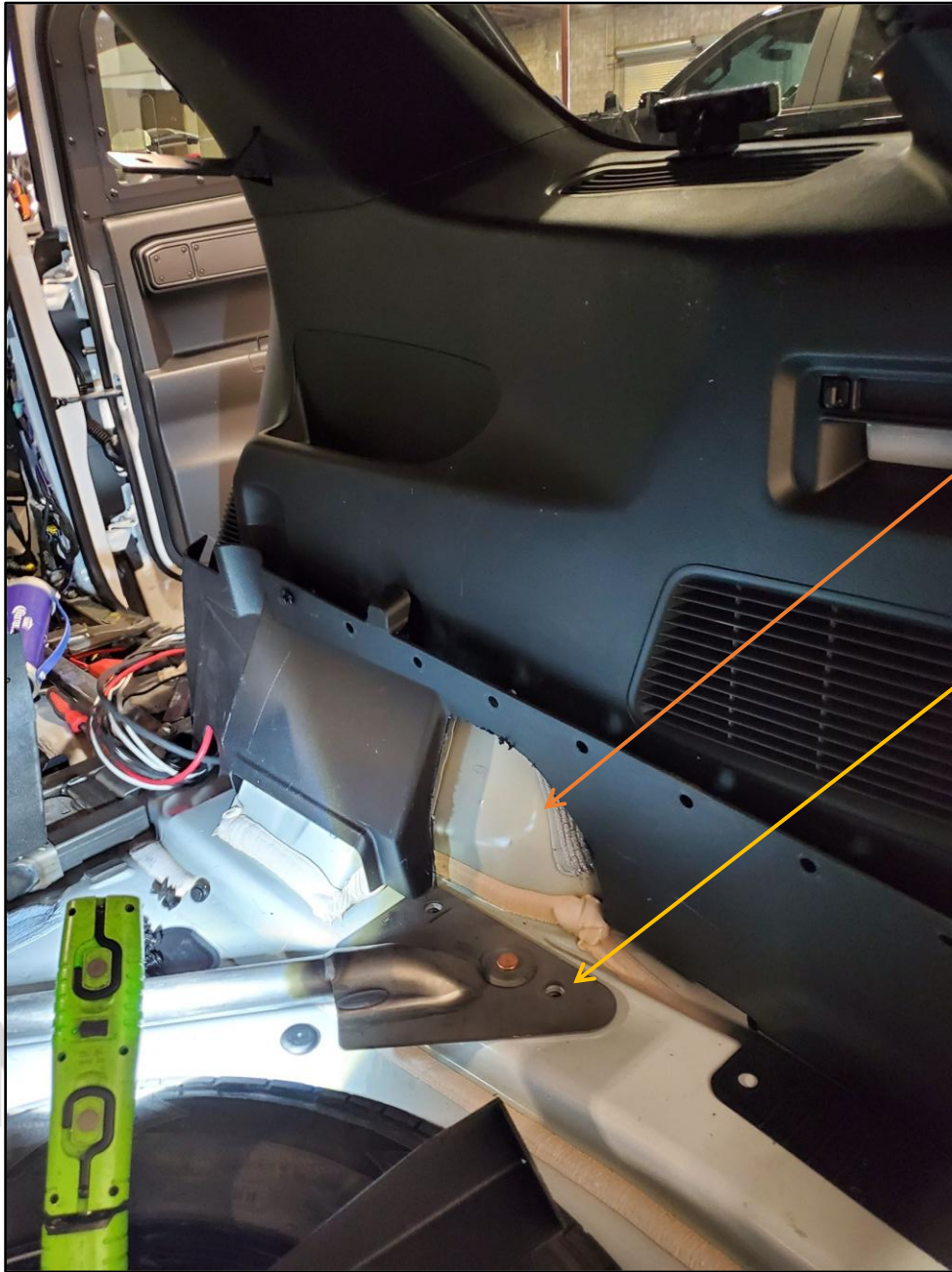
INSTALL KIT INCLUDES:

FALSE FLOOR (FRAME, DRAWER, PACKAGE
TRAY & PANELS)

MOUNTING FEET

MOUNTING HARDWARE

EMERGENCY EQUIPMENT



REMOVE FOAM FROM REAR OF VEHICLE, IT IS NOT NEEDED AND NOT REQUIRED BY FORD. THE SPARE TIRE, HOWEVER, MUST REMAIN FOR CRASH RATING.

TO MAKE INSTALLATION EASIER YOU MAY CUT OUT THE PLASTICS AS SHOWN.

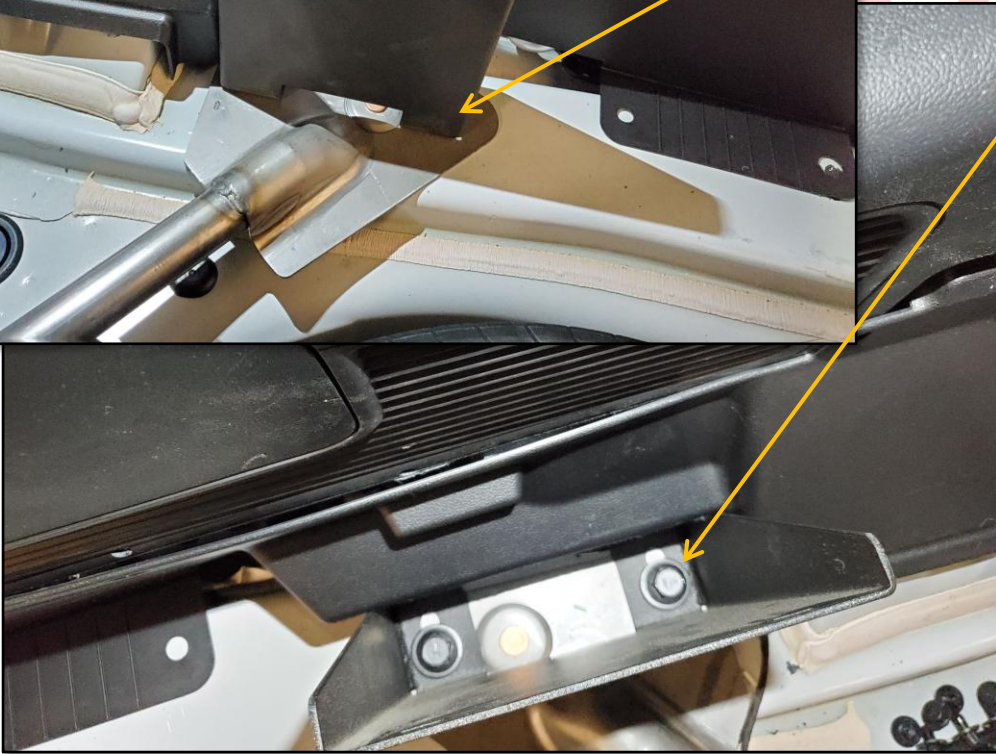
FIND THE REAR SIDE BOLTS THAT ATTACH THE CROSS MEMBER TO THE VEHICLE FLOOR. RETAIN FACTORY HARDWARE FOR INSTALLATION.

Y EQUIPMENT



ATTACH SIDE MOUNT TO SUBFRAME LOCATION AS SHOWN.

SLIDE THE SIDE MOUNT ALL THE WAY TO THE OUTSIDE OF THE VEHICLE AS SHOWN. TIGHTEN FACTORY BOLTS TO SECURE FEET. DO THIS FOR BOTH SIDES, MOUNTS ARE UNIVERSAL. MAKE SURE MOUNT IS ALL THE WAY OUTBOARD, AS THIS ALLOWS THE FRAME TO STAY SQUARE WHEN ATTACHED.



EQUIPMENT



LOCATE FACTORY HOLE BEHIND REAR CROSSMEMBER SUPPORT, IT WILL BE COVERED BY BLACK TAPE.



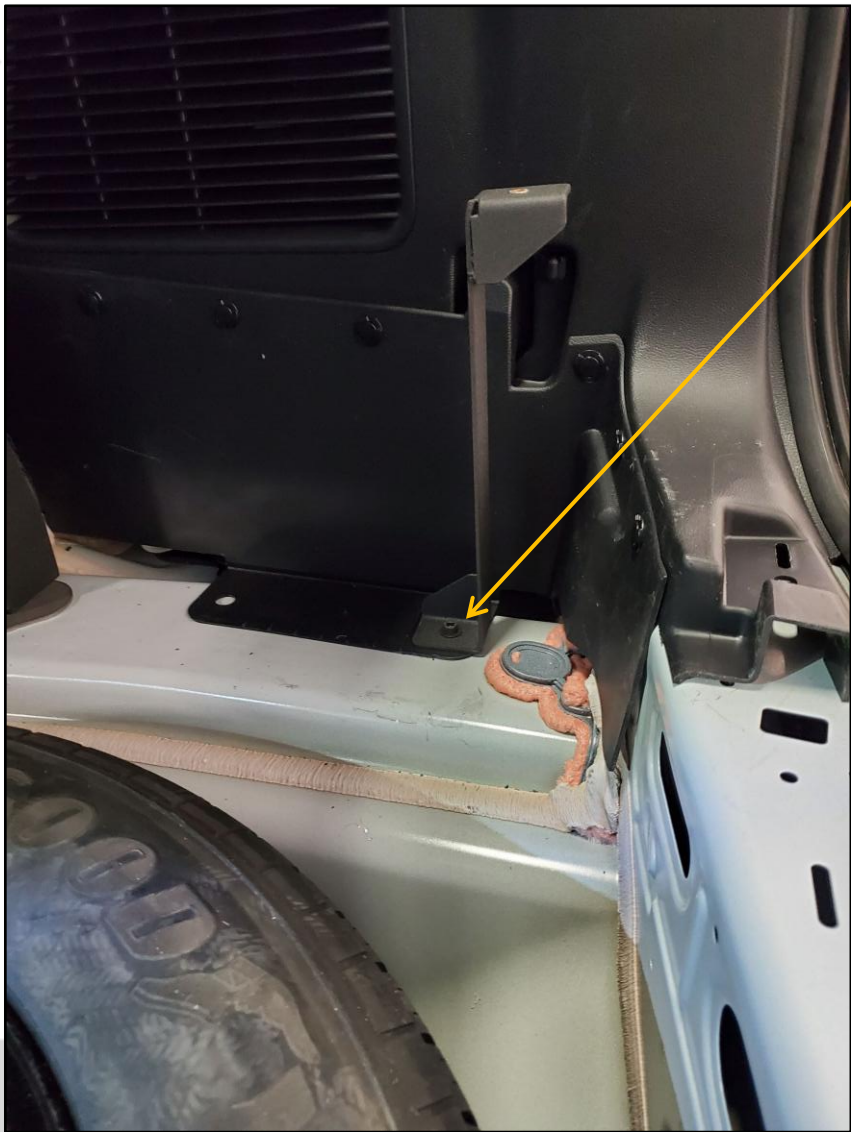
USING AN IMPACT TOOL AND THE SELF-TAPPING BOLT (SUPPLIED), THREAD THE FACTORY HOLE.



REMOVE INSTALLED BOLT, INSTALL AND SECURE BRACKET WITH SAME BOLT. LEAVE LOOSE UNTIL INSTALLATION OF FRAME. ONCE FRAME IS INSTALLED TIGHTEN THESE BOLTS.



INSTALL BOTH LEFT AND RIGHT BRACKETS AS SHOWN



LOCATE THREADED HOLE IN THE REAR OF THE VEHICLE AS SHOWN.
INSTALL REAR WING SUPPORT MOUNTS WITH SUPPLIED M65X14 SCREWS (2), NOTING LOCATIONS OF THE GUSSETS (BOTTOM TOWARDS THE OUTSIDE, TOP TOWARDS THE INSIDE)

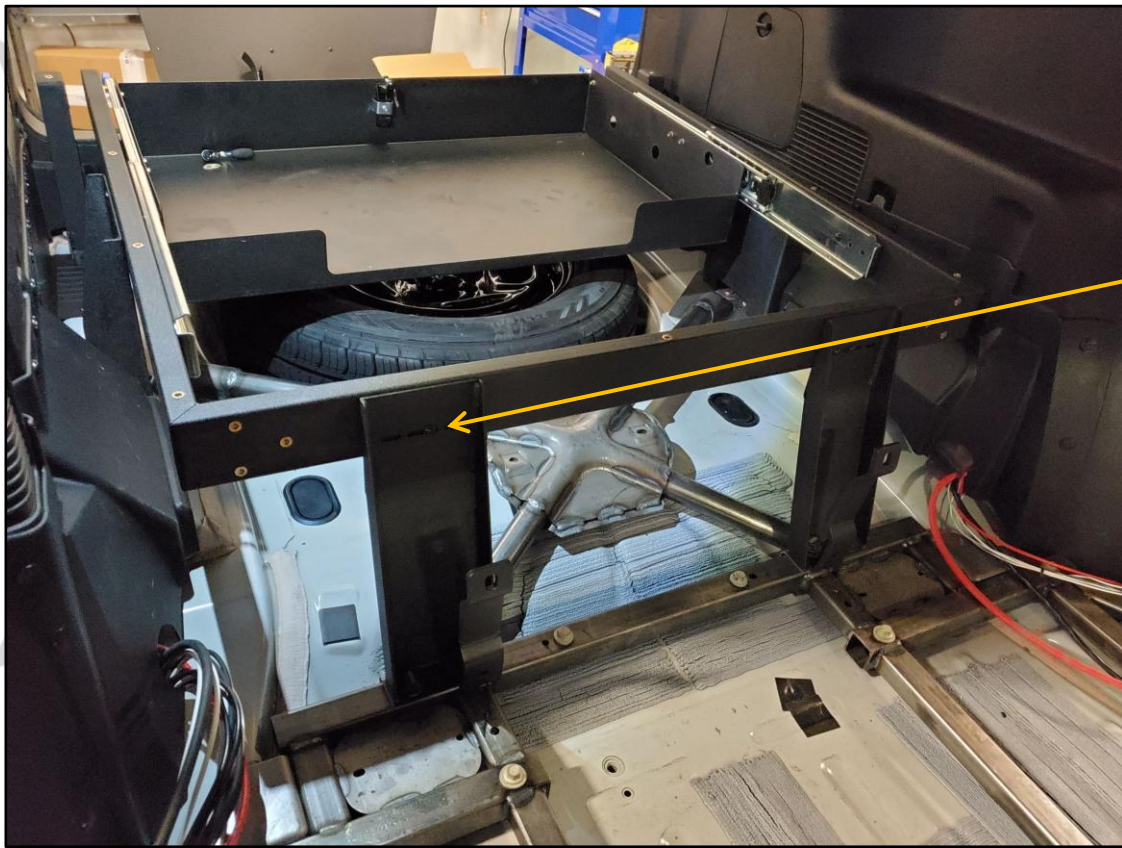


REAR OF VEHICLE SHOULD NOW LOOK LIKE THIS.

FRONT MOUNTS

SIDE MOUNTS

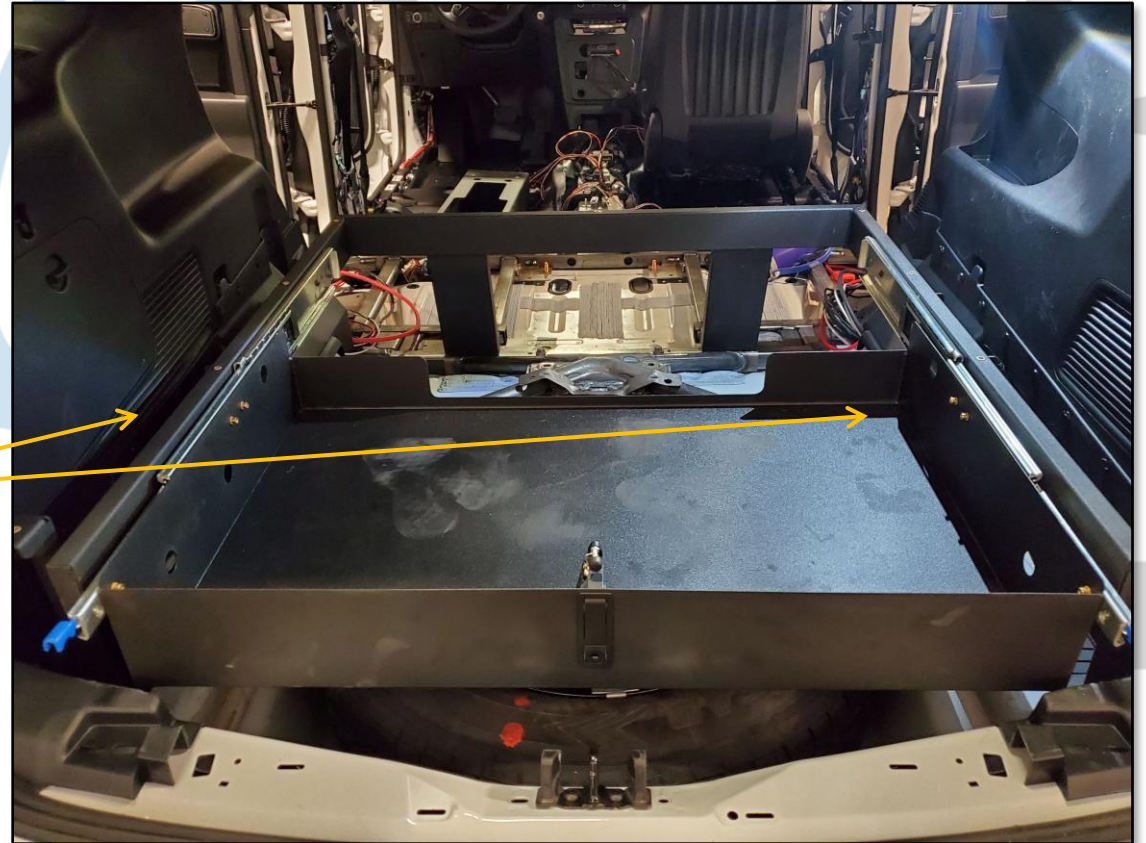
REAR WING SUPPORTS



PLEASE NOTE THE FOLLOWING CAN BE DONE WITH THE DRAWER AND FRAME ASSEMBLED, OR YOU CAN REMOVE THE SLIDES AND DRAWER FROM THE FRAME, AND RE-INSTALL THE DRAWER WHEN DONE.

INSERT FRAME BETWEEN MOUNTS WITH SUPPLIED 10-32 BUTTON HEAD CAP SCREWS TO REAR MOUNT AS SHOWN TO INSIDE SLOTS ON FRONT MOUNTS

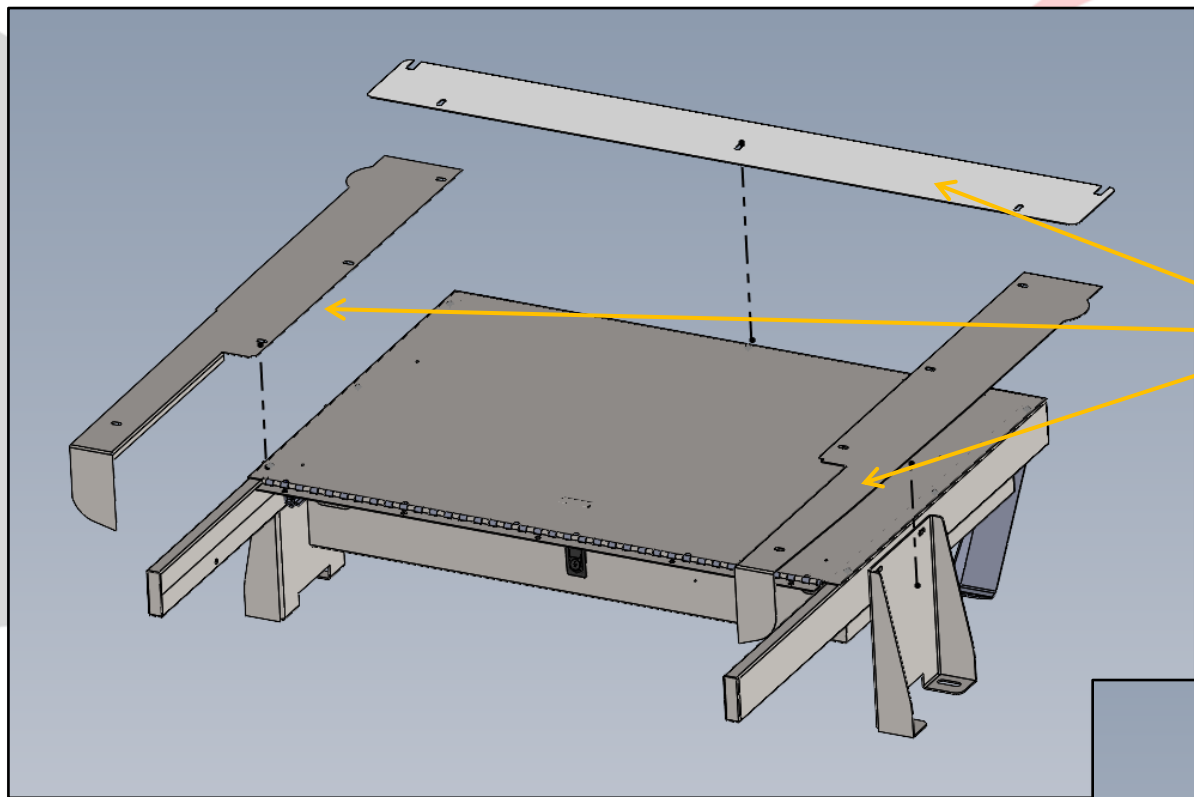
INSERT (2) 10-32 BUTTON HEAD CAP SCREWS TO SIDE MOUNTS INTO FRAME AND TIGHTEN, THEN INSTALL DRAWER USING SUPPLIED HARDWARE





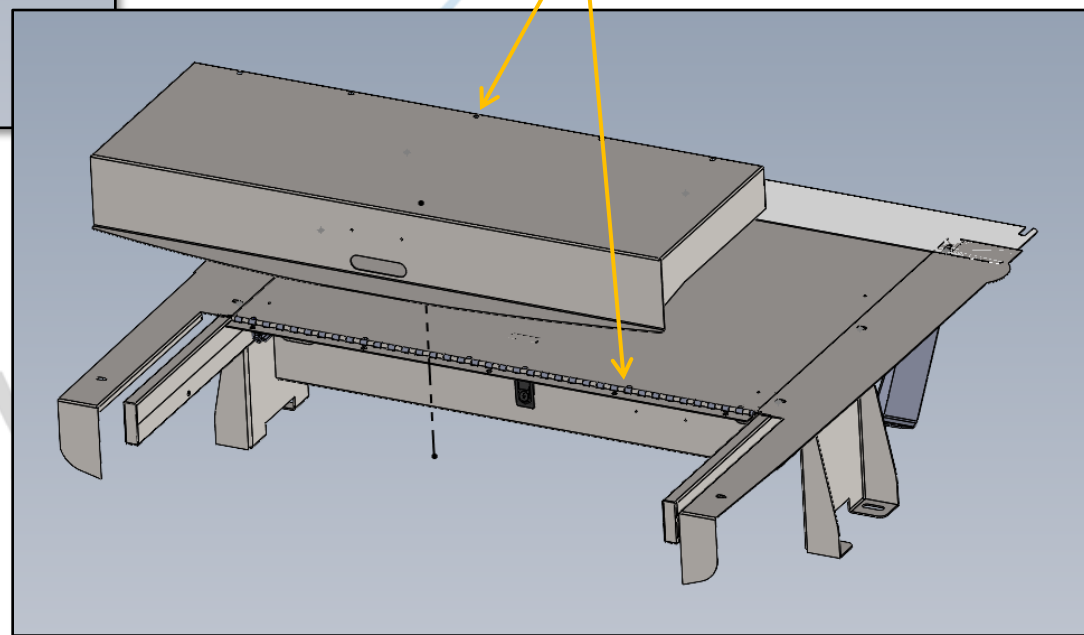
THERE SHOULD BE A MINIMUM OF 38 1/8" BETWEEN THE FRAME RAILS AT THE REAR OF THE VEHICLE AFTER TIGHTENING THE MOUNTS.

EQUIPMENT



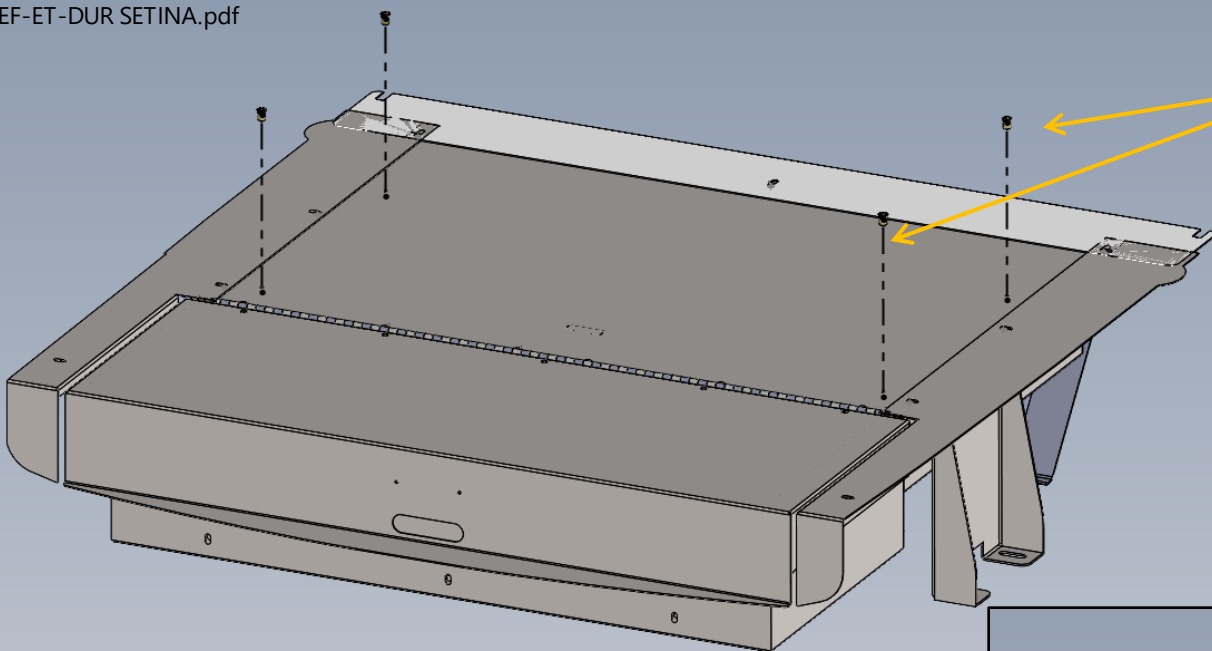
LAY FLAT FRONT COVER OVER FRAME, THEN LAY REAR FILLER PLATE AND SIDE WINGS. FASTEN USING SUPPLIED HARDWARE, AND INSTALL FINAL SOCKET HEAD CAP SCREWS TO WING SUPPORTS.

INSTALL LID TO HINGE USING SUPPLIED 10-32 BHCSs AND #10 WASHERS.



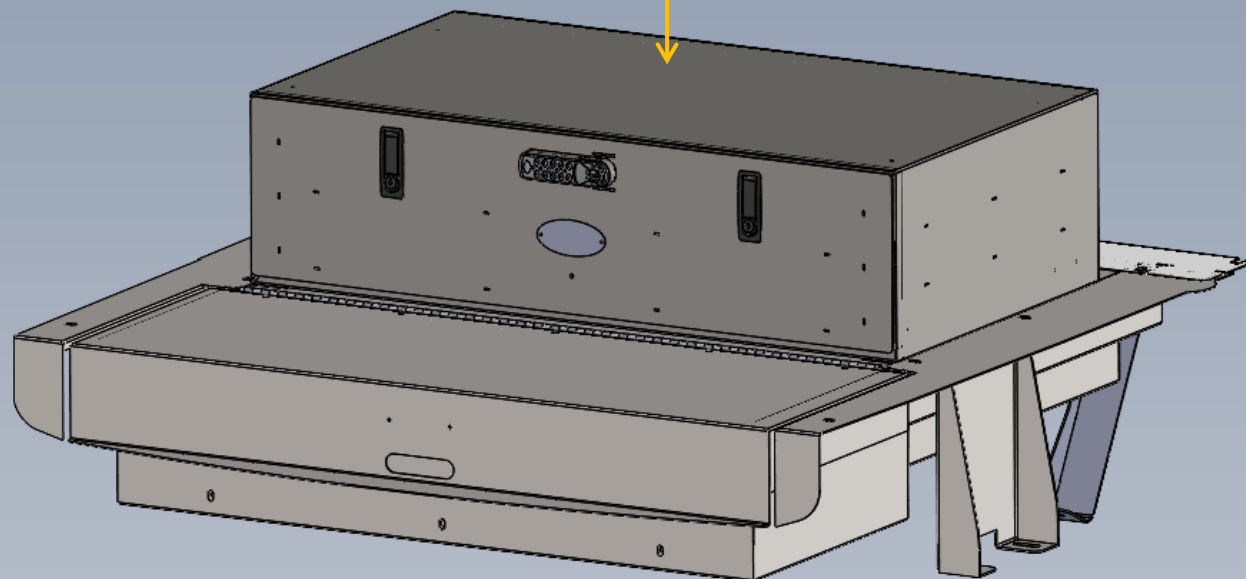


INV-BS-EF-ET-DUR SETINA.pdf



OPTIONAL:

DRILL OUT PILOT HOLES PROVIDED
AND INSTALL $\frac{1}{4}$ -20 NUTSERTS FOR
MOUNTING STANDARD 38 X 21 BOX
(INV-BOX-SD-382110 SHOWN FOR
REFERENCE)





1616 MARLBOROUGH AVE. RIVERSIDE, CA 92507

FOR TECHNICAL ASSISTANCE WITH INSTALLATION OR
OTHER QUESTIONS, PLEASE CALL (951) 222-2270

OR EMAIL SUPPORT@IDSMP.COM

Thank you for your business!