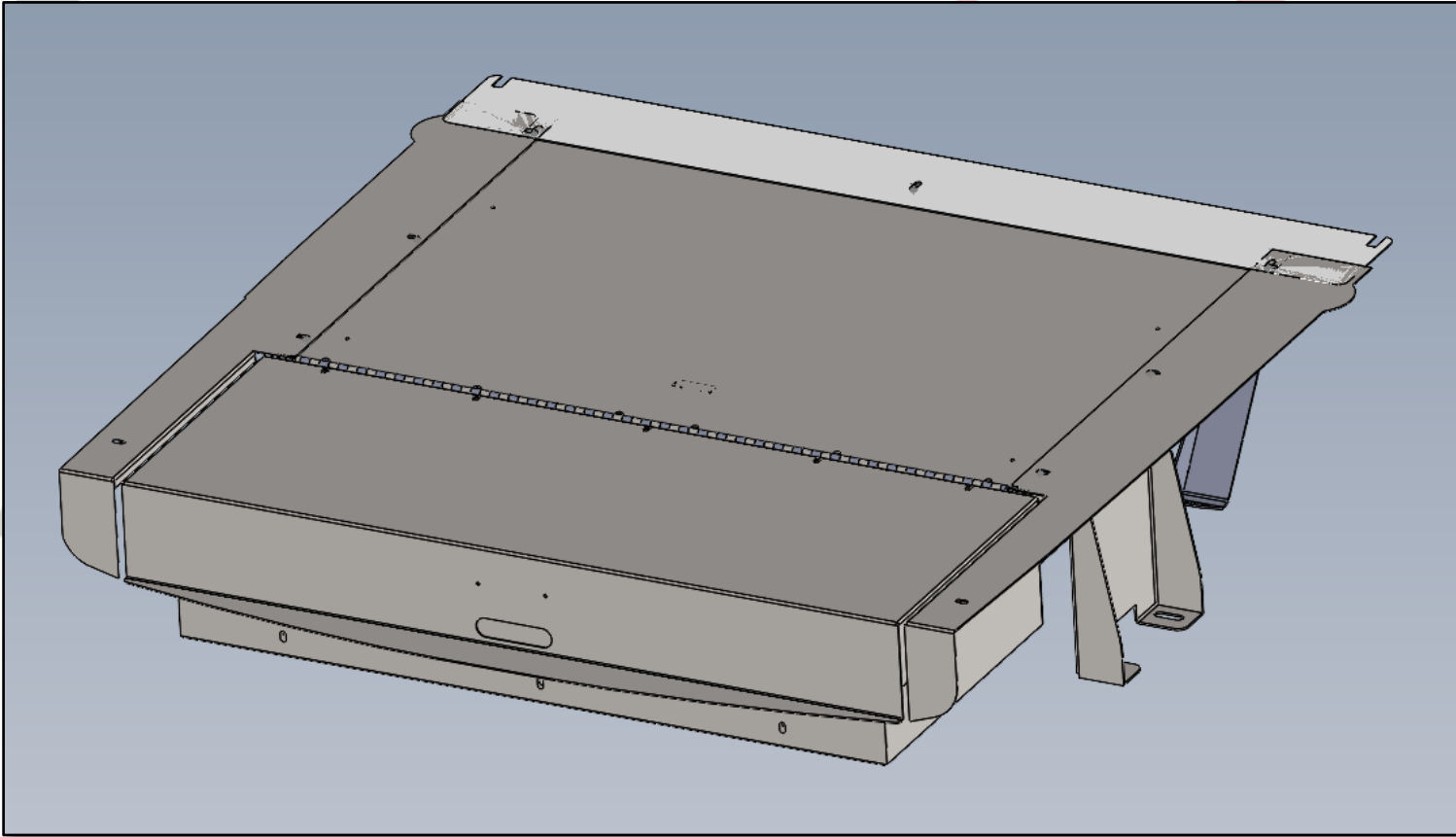


EMERGENCY EQUIPMENT

INV-ES-FF-ET-PIU20

INSTALLATION INSTRUCTIONS



## INSTALLATION OF FALSE FLOOR IN FORD PIU20

INSTALL KIT INCLUDES:

FALSE FLOOR (FRAME, DRAWER, PACKAGE  
TRAY & PANELS)

MOUNTING FEET

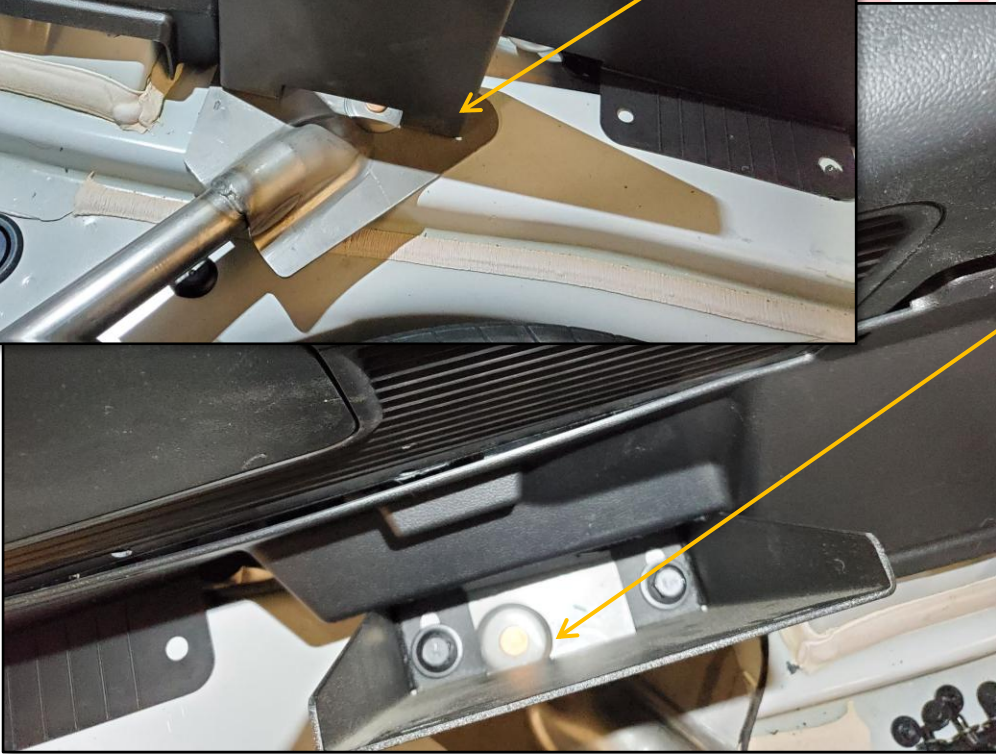
MOUNTING HARDWARE

EMERGENCY EQUIPMENT



ATTACH SIDE MOUNT TO SUBFRAME LOCATION AS SHOWN.

SLIDE THE SIDE MOUNT ALL THE WAY TO THE OUTSIDE OF THE VEHICLE AS SHOWN. TIGHTEN FACTORY BOLTS TO SECURE FEET. DO THIS FOR BOTH SIDES, MOUNTS ARE UNIVERSAL. MAKE SURE MOUNT IS ALL THE WAY OUTBOARD, AS THIS ALLOWS THE FRAME TO STAY SQUARE WHEN ATTACHED.



EQUIPMENT



LOCATE FACTORY HOLE BEHIND REAR CROSSMEMBER SUPPORT, IT WILL BE COVERED BY BLACK TAPE.



USING AN IMPACT TOOL AND THE SELF-TAPPING BOLT (SUPPLIED), THREAD THE FACTORY HOLE.

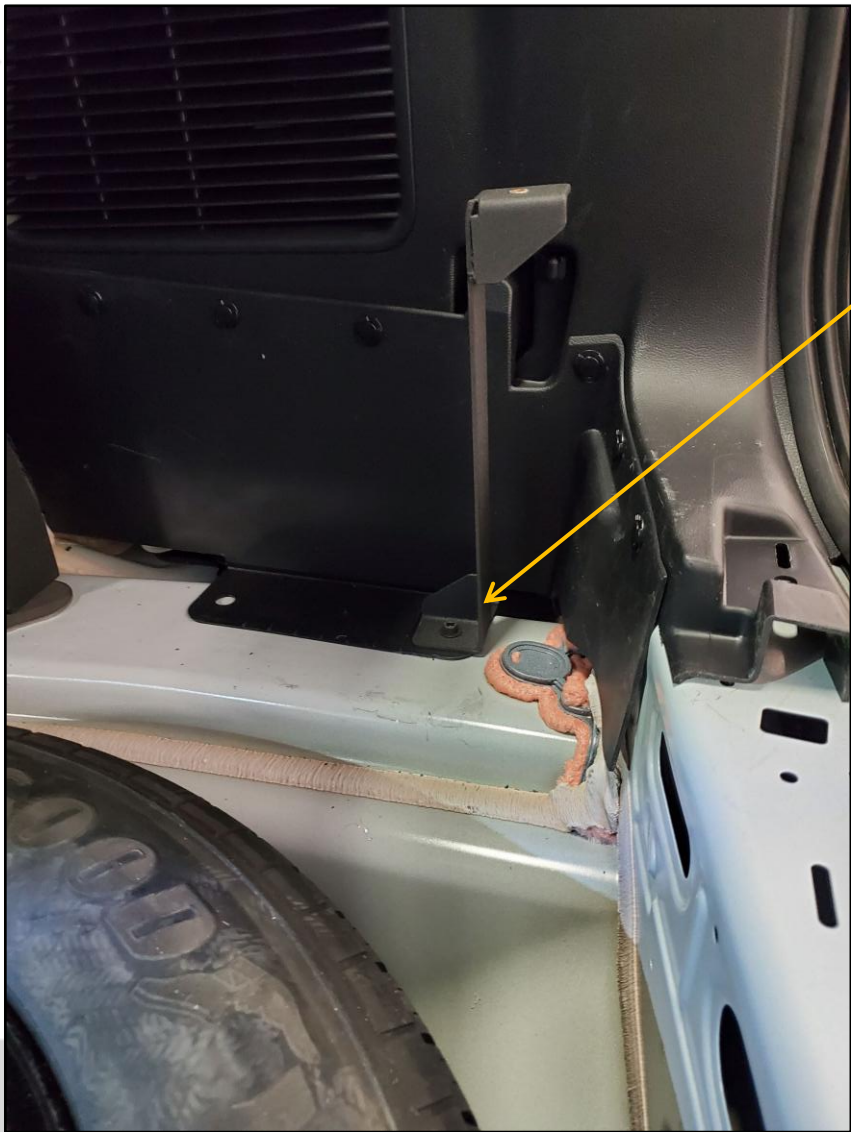




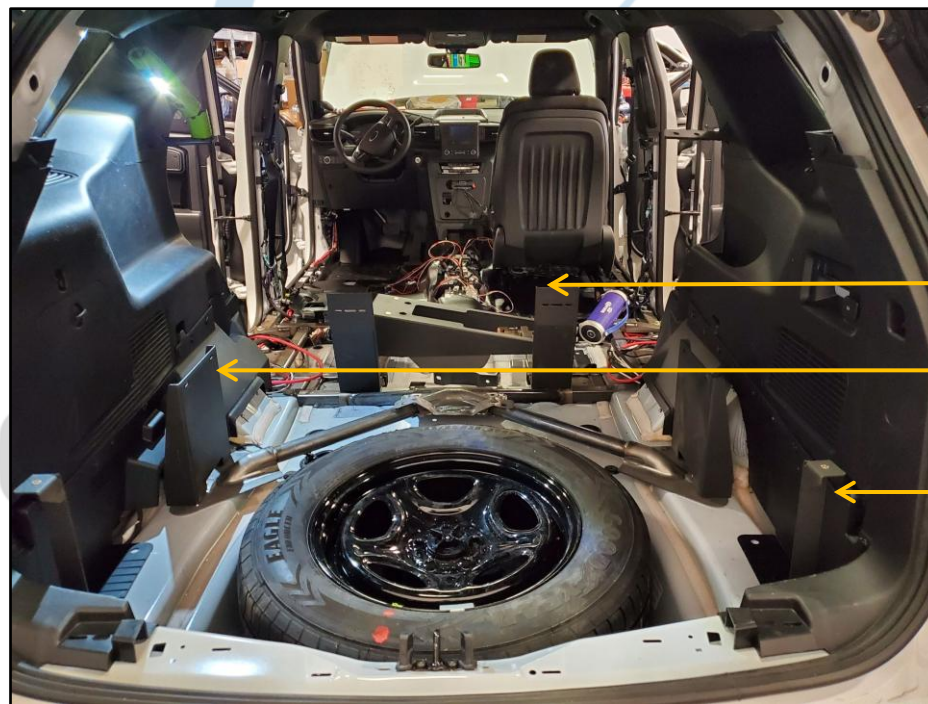
REMOVE INSTALLED BOLT, INSTALL AND SECURE BRACKET WITH SAME BOLT. LEAVE LOOSE UNTIL INSTALLATION OF FRAME. ONCE FRAME IS INSTALLED TIGHTEN THESE BOLTS.



INSTALL BOTH LEFT AND RIGHT BRACKETS AS SHOWN



LOCATE THREADED HOLE IN THE REAR OF THE VEHICLE AS SHOWN.  
INSTALL REAR WING SUPPORT MOUNTS WITH SUPPLIED M65X14 SCREWS (2), NOTING LOCATIONS OF THE GUSSETS (BOTTOM TOWARDS THE OUTSIDE, TOP TOWARDS THE INSIDE)



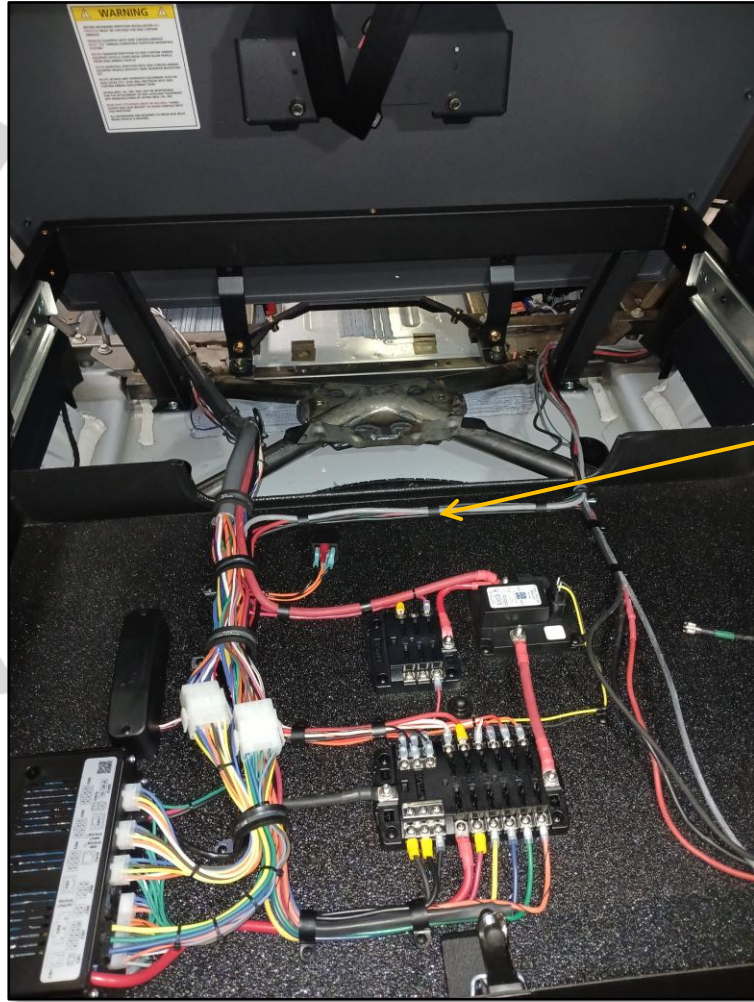
REAR OF VEHICLE SHOULD NOW LOOK LIKE THIS.

FRONT MOUNTS

SIDE MOUNTS

REAR WING SUPPORTS

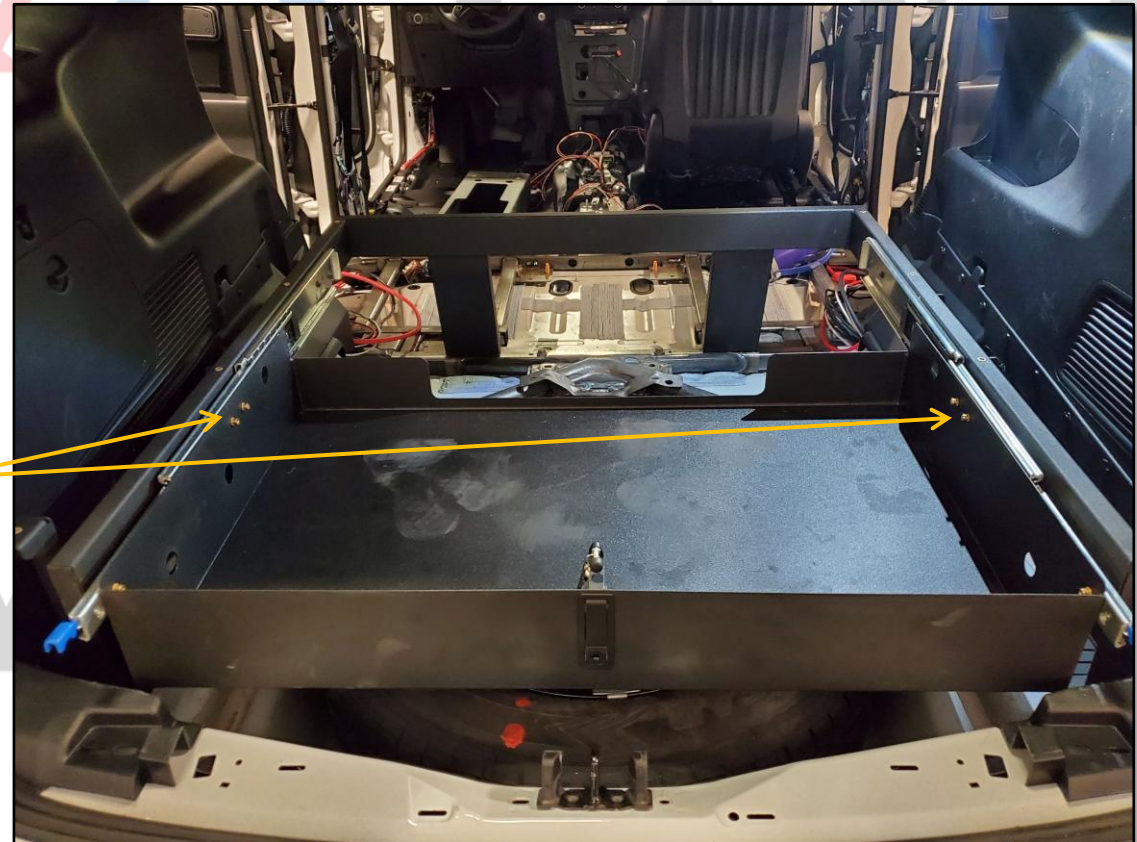




PLEASE NOTE THE FOLLOWING CAN BE DONE WITH THE DRAWER AND FRAME ASSEMBLED, OR YOU CAN REMOVE THE SLIDES AND DRAWER FROM THE FRAME, AND RE-INSTALL THE DRAWER WHEN DONE.

INSERT FRAME BETWEEN MOUNTS WITH SUPPLIED 10-32 BUTTON HEAD CAP SCREWS TO REAR MOUNT AS SHOWN TO INSIDE SLOTS ON FRONT MOUNTS

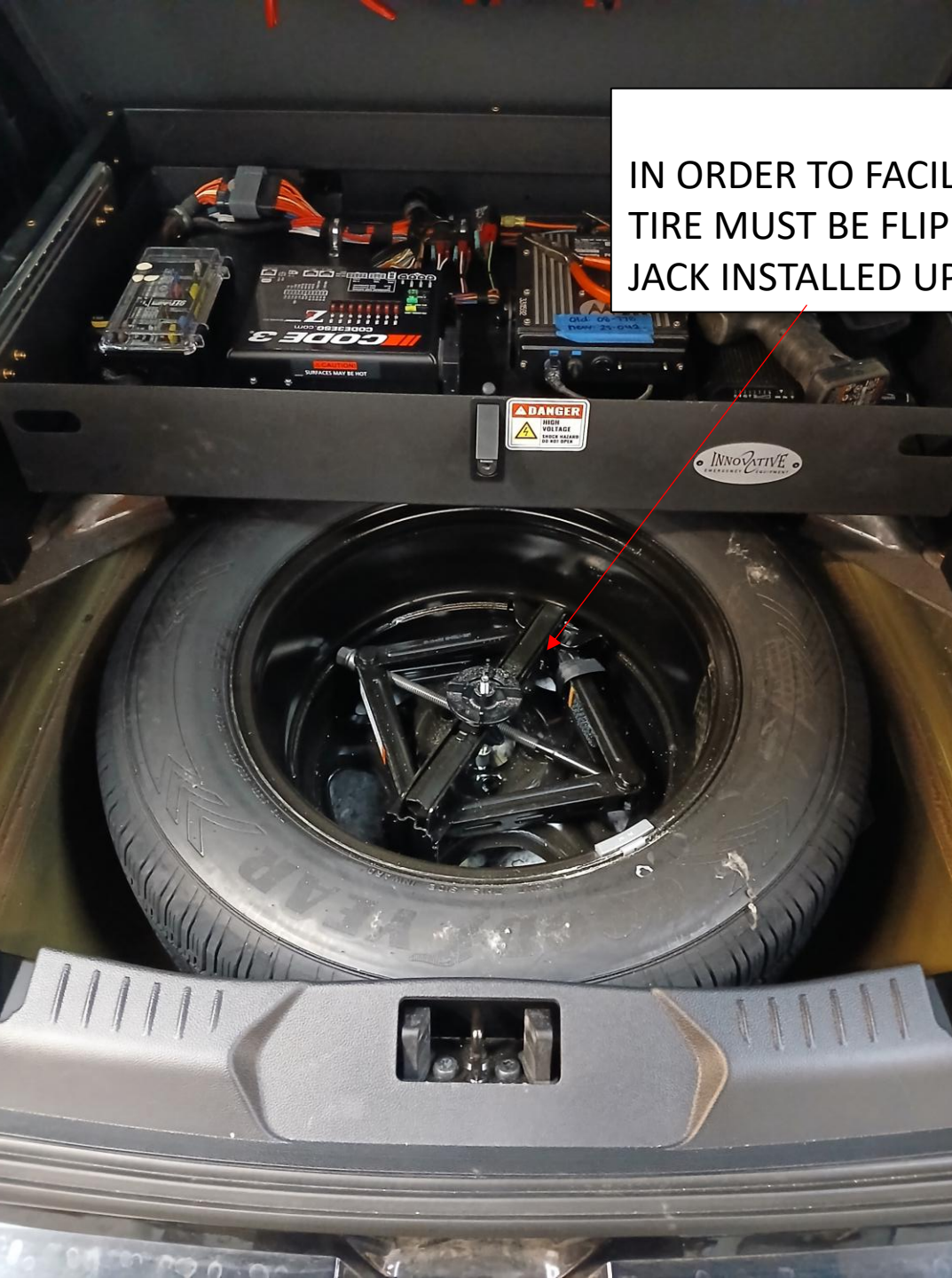
INSERT (2) 10-32 BUTTON HEAD CAP SCREWS TO SIDE MOUNTS INTO FRAME AND TIGHTEN, THEN INSTALL DRAWER USING SUPPLIED HARDWARE



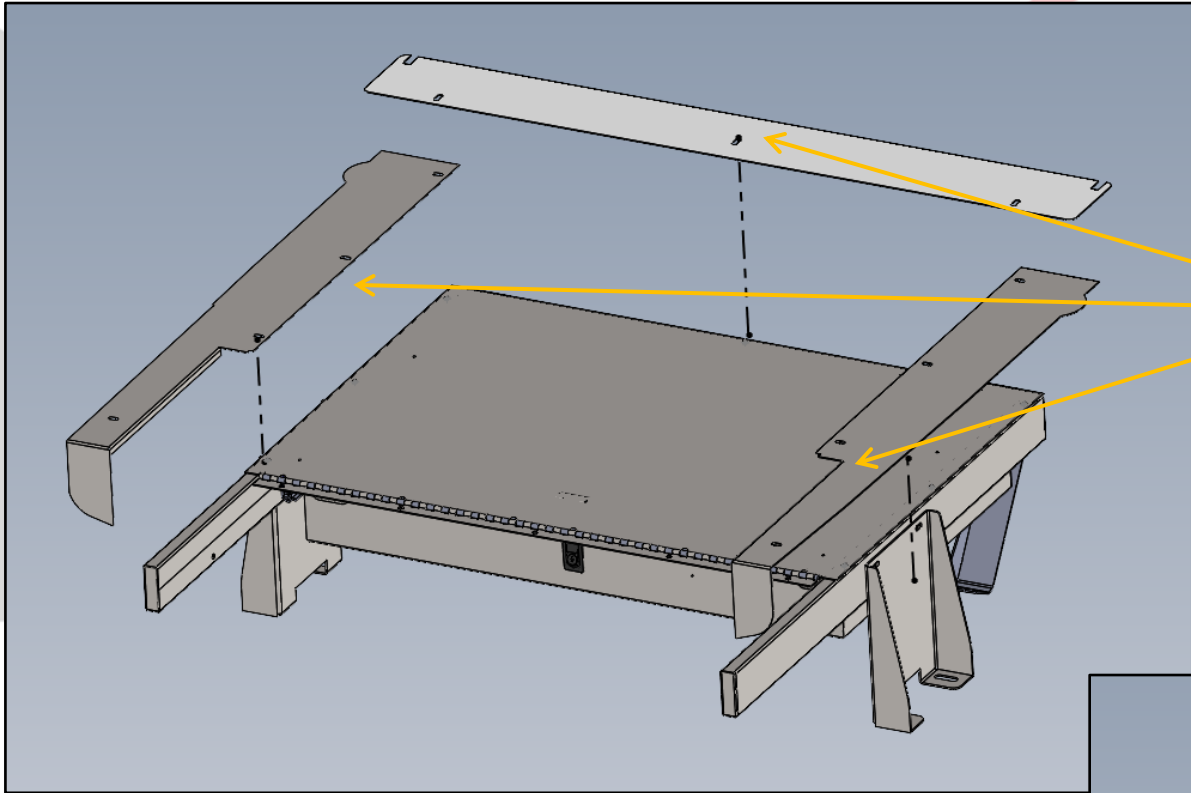


**\*\*SPECIAL NOTE\*\***

IN ORDER TO FACILITATE SPARE TIRE REMOVAL WITH UNIT,  
TIRE MUST BE FLIPPED OVER AS SHOWN BELOW WITH  
JACK INSTALLED UPSIDE DOWN FROM FACTORY.

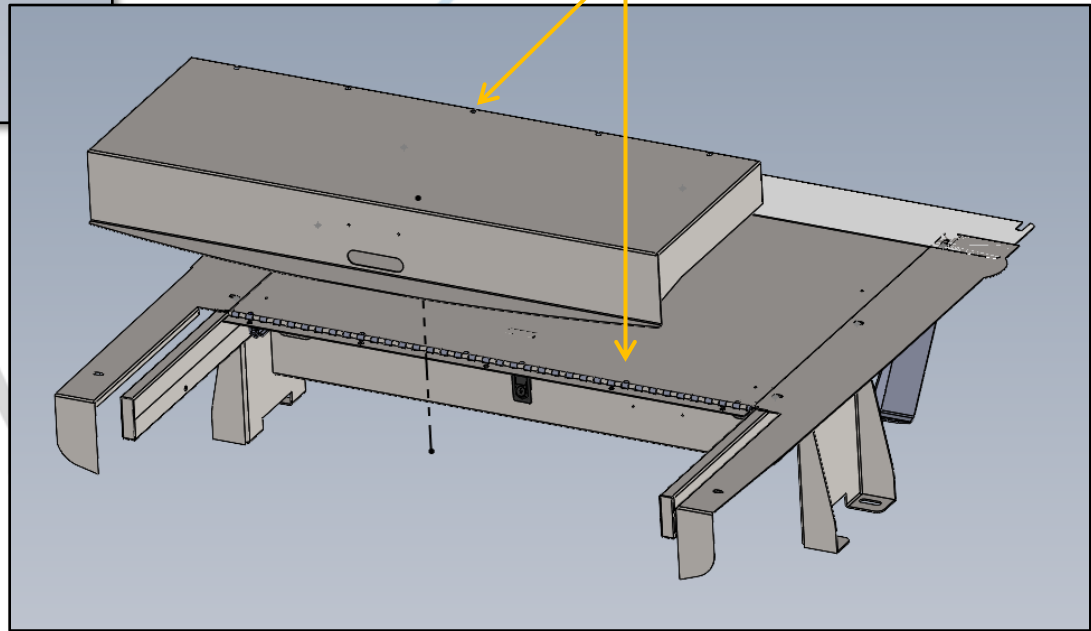


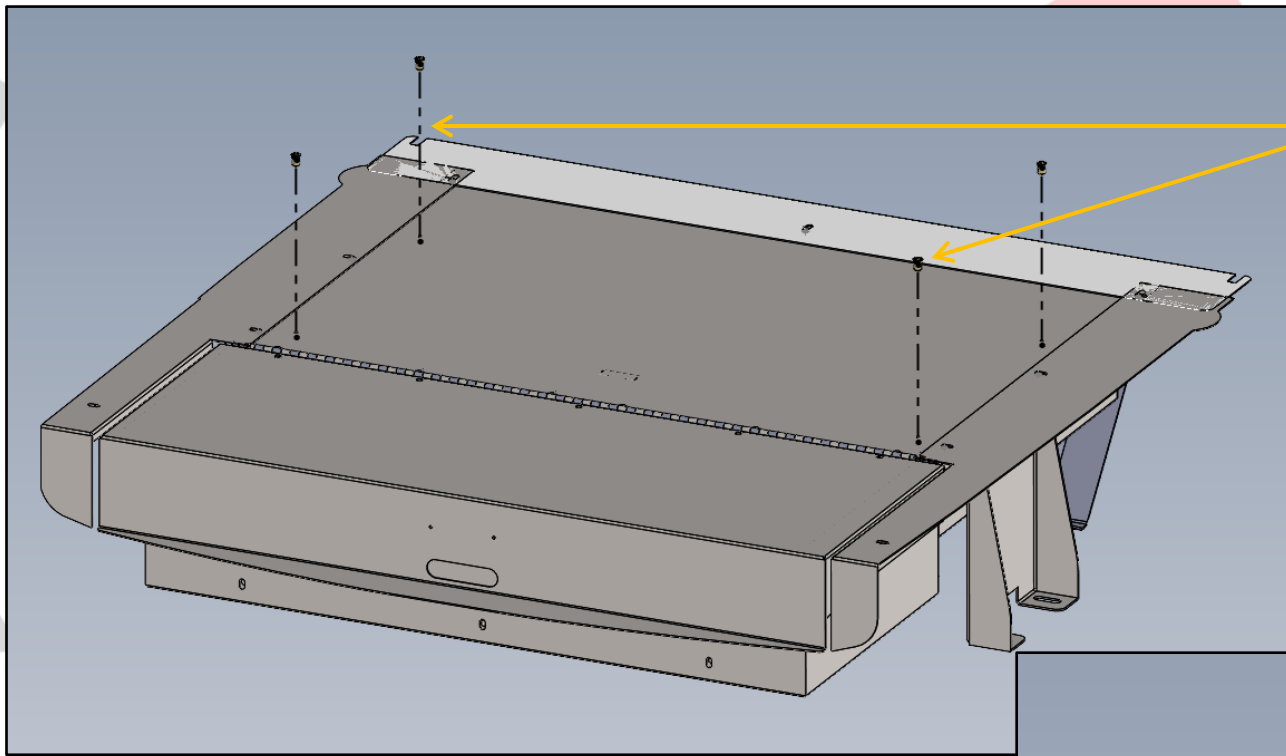




LAY FLAT FRONT COVER OVER FRAME, THEN LAY REAR FILLER PLATE AND SIDE WINGS. FASTEN USING SUPPLIED HARDWARE, AND INSTALL FINAL SOCKET HEAD CAP SCREWS TO WING SUPPORTS.

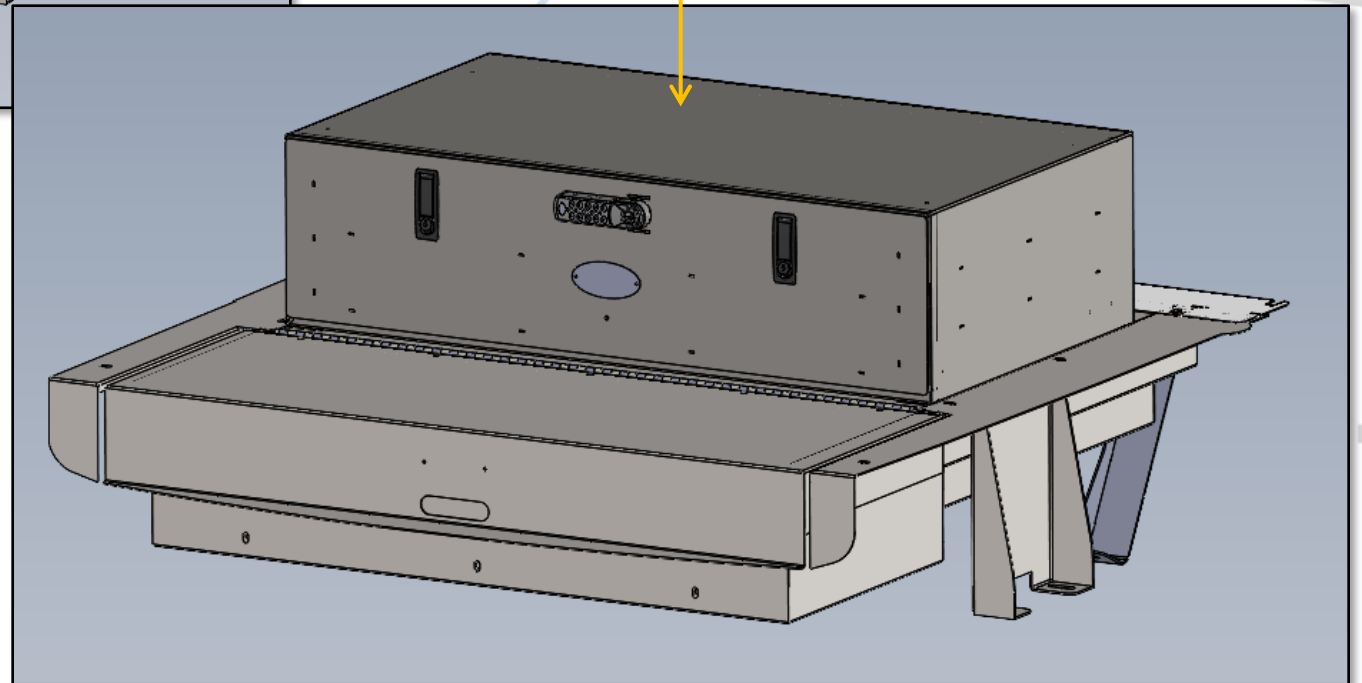
INSTALL LID TO HINGE USING SUPPLIED 10-32 BHCSs AND #10 WASHERS.





**OPTIONAL:**

DRILL OUT PILOT HOLES PROVIDED  
AND INSTALL  $\frac{1}{4}$ -20 NUTSERTS FOR  
MOUNTING STANDARD 38 X 21 BOX  
(INV-BOX-SD-382110 SHOWN FOR  
REFERENCE)







1616 MARLBOROUGH AVE. RIVERSIDE, CA 92507

FOR TECHNICAL ASSISTANCE WITH INSTALLATION OR  
OTHER QUESTIONS, PLEASE CALL (951) 222-2270

OR EMAIL [SUPPORT@IDSMP.COM](mailto:SUPPORT@IDSMP.COM)

*Thank you for your business!*