



# INNOVATIVE

INV-ES-FF-ET-TAH21-BOXMNT

INSTALL INSTRUCTIONS

EMERGENCY EQUIPMENT



REMOVE LOWER TRIM IN  
REAR OF VEHICLE



EMERGENCY EQUIPMENT





REMOVE C & D PILLAR TRIM FROM VEHICLE

REMOVE REAR CARGO TRIM FROM VEHICLE

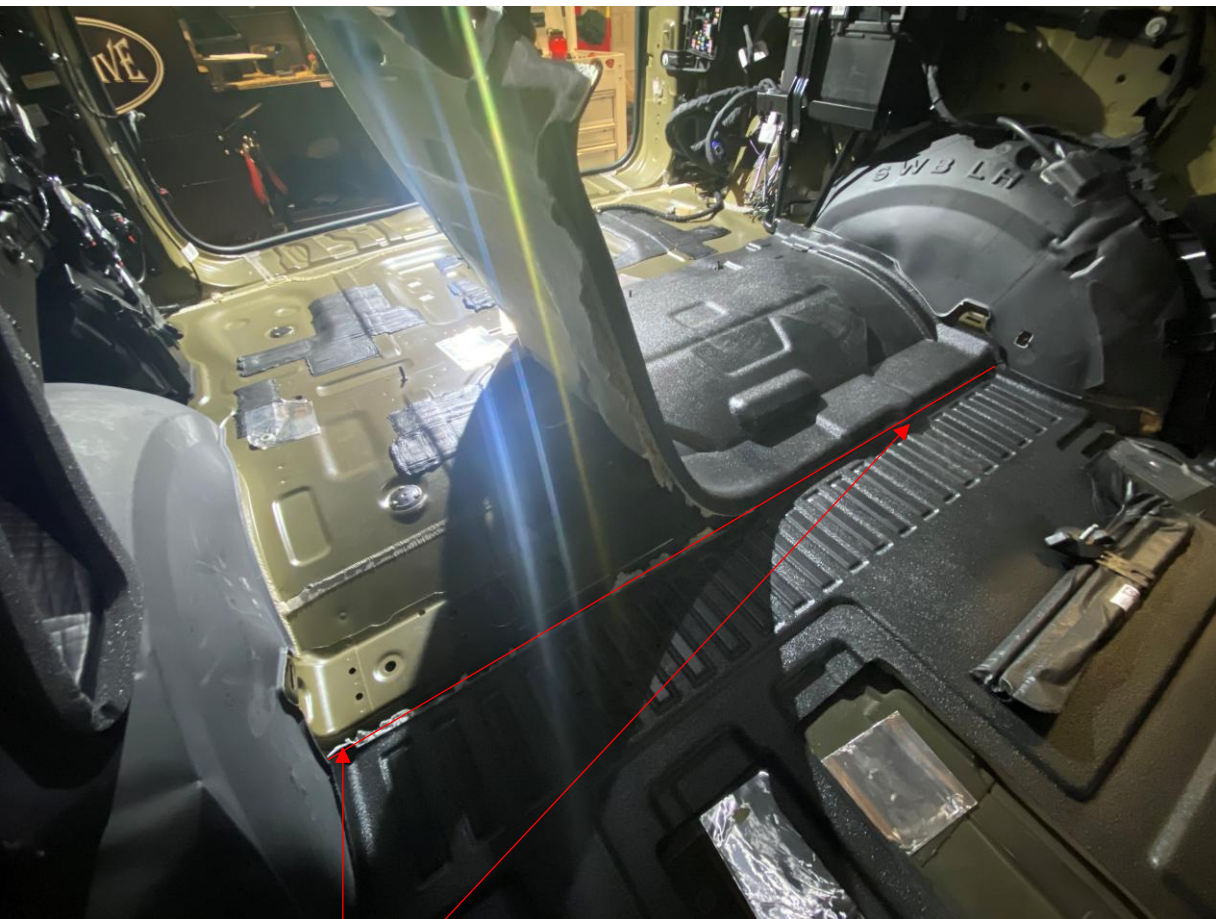


REMOVE REAR FLOOR MAT

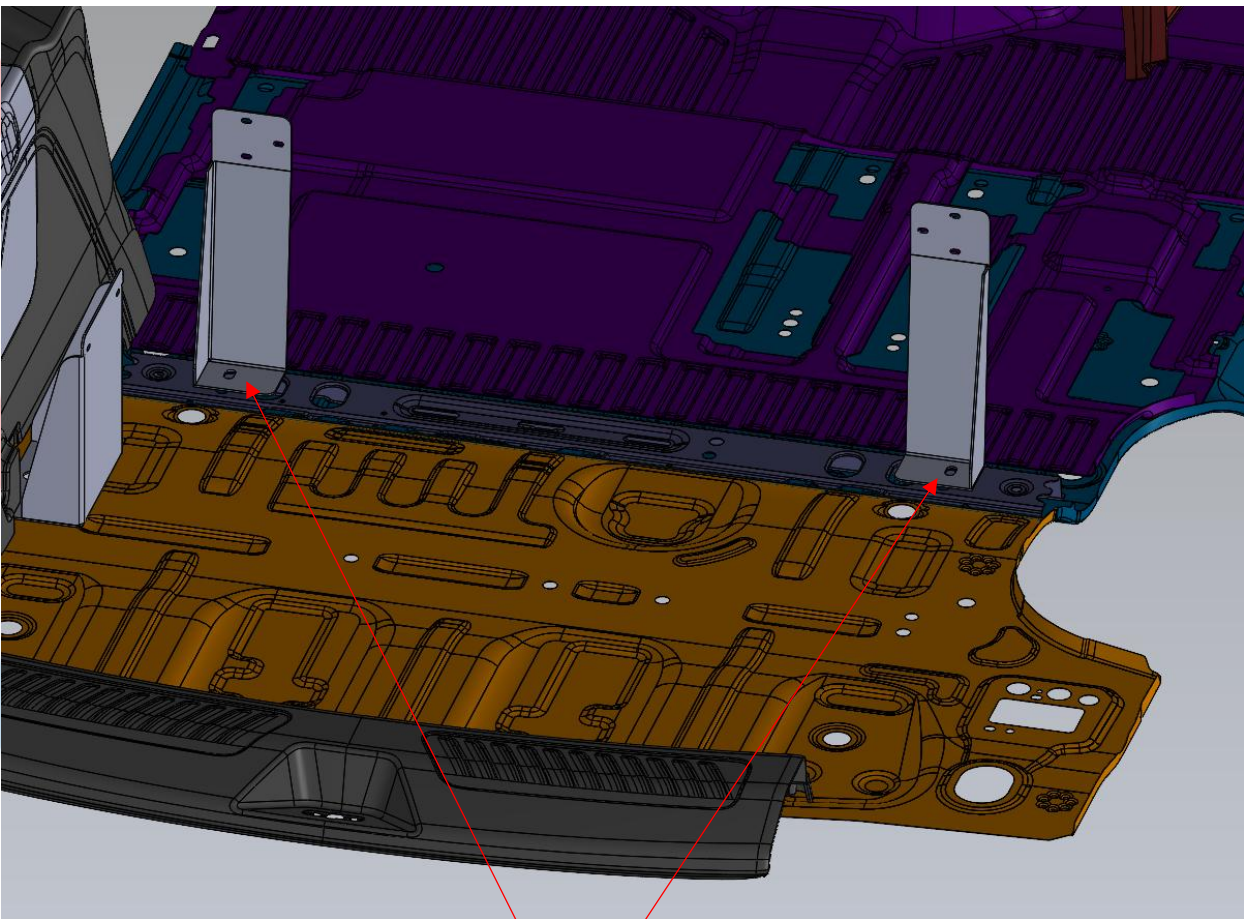
UTILITZE THIS TIME TO RUN ANY LIGHTING /  
CABLES, AS ONCE THE FLOOR IS IN THE TRIM WILL  
NO LONGER BE REMOVABLE WITHOUT REMOVAL.

EMERGENCY EQUIPMENT





USE A UTILITY KNIFE TO CUT ALONG  
THE FLOOR MAT ON THE 3<sup>RD</sup> ROW  
SEAT RAIL. REMOVE TRIMMED PIECE.

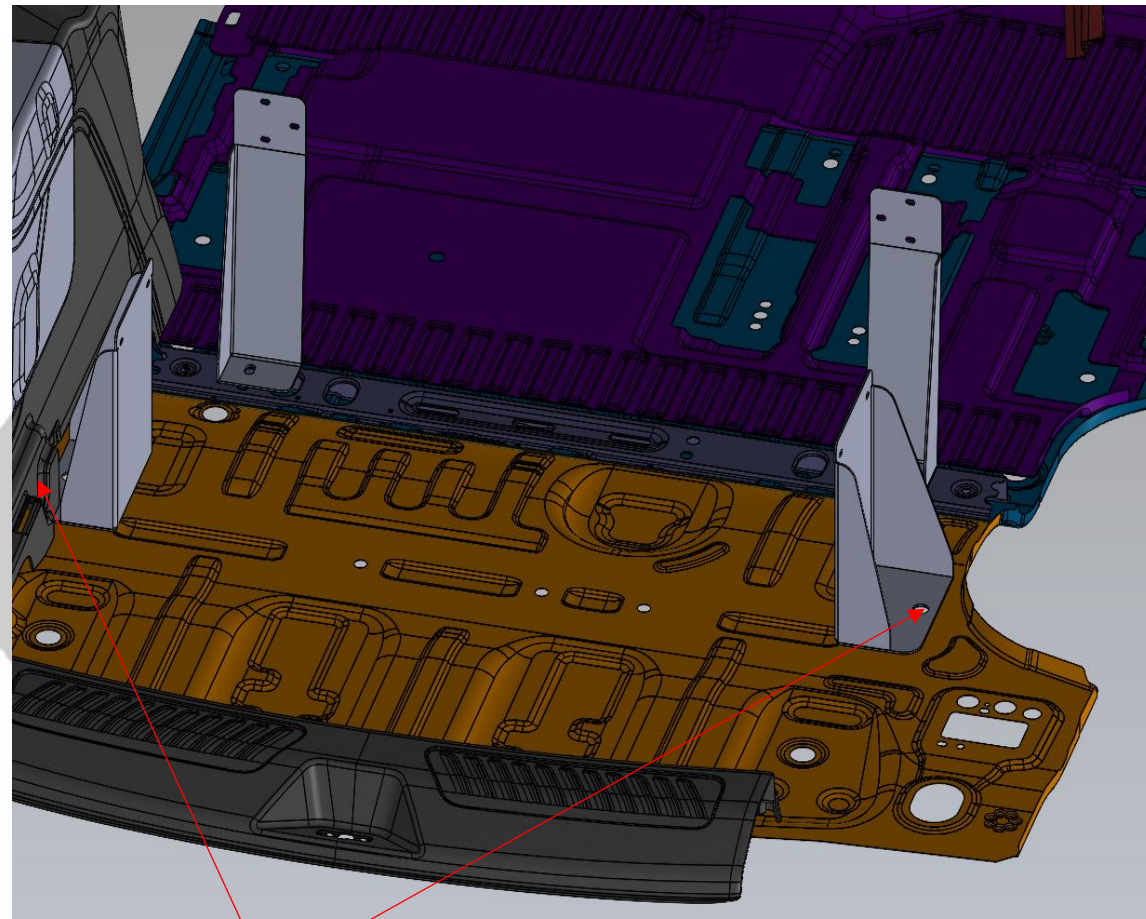


USING HARDWARE PROVIDED,  
INSTALL TWO FRONT MOUNTING  
FEET TO VEHICLE.

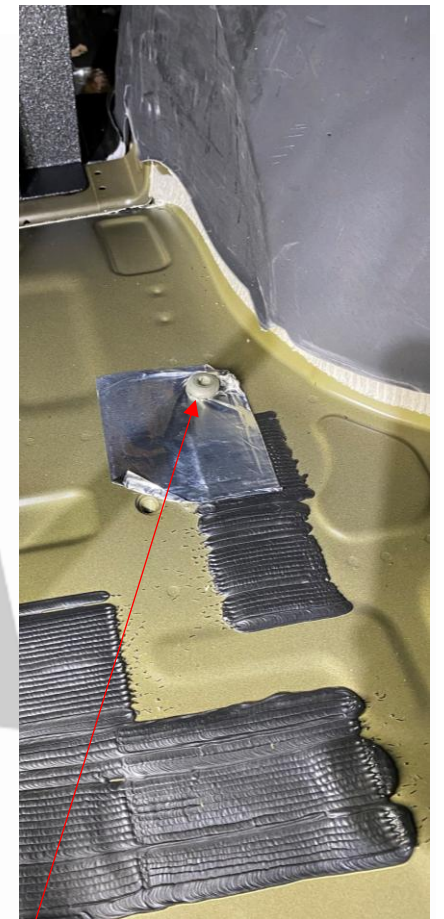




REMOVE  
FACTORY BOLTS  
FROM THESE  
TWO LOCATIONS



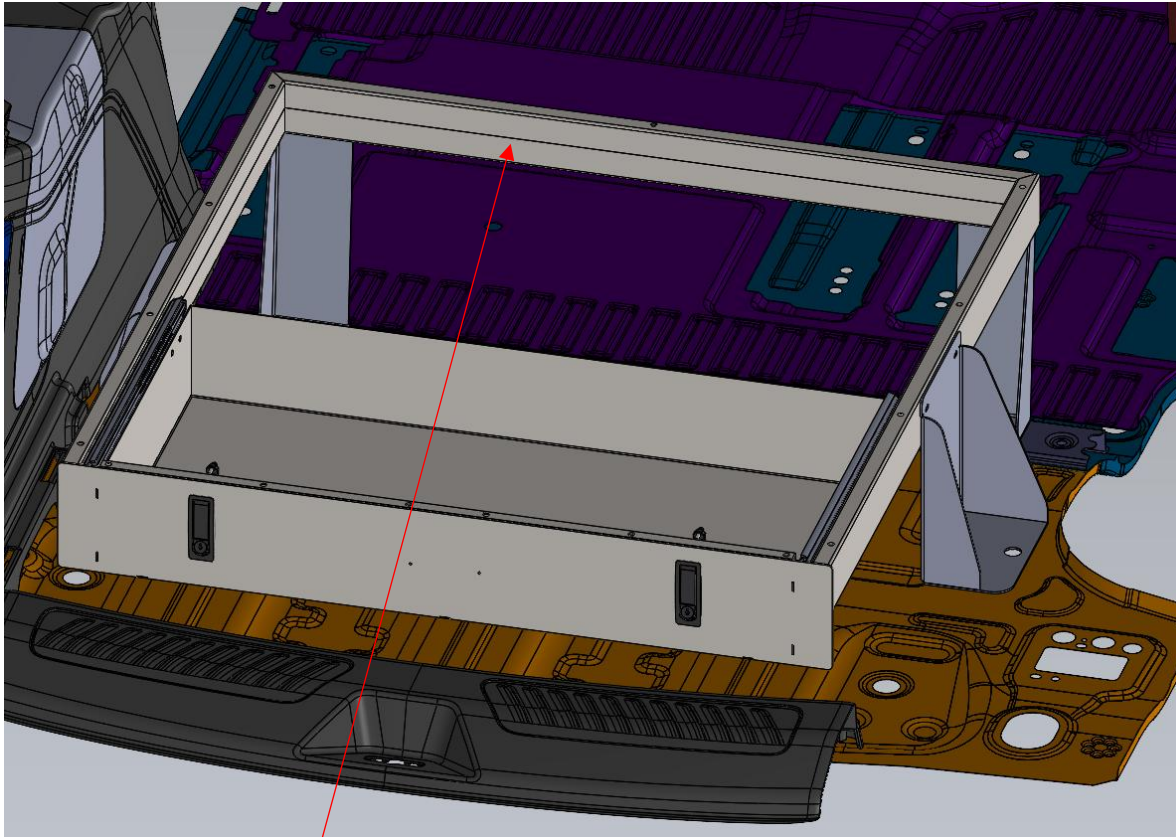
USE FACTORY HARDWARE TO  
INSTALL PASSENGER AND  
DRIVER REAR FEET.



REMOVE FACTORY BOLT  
FROM THIS LOCATION

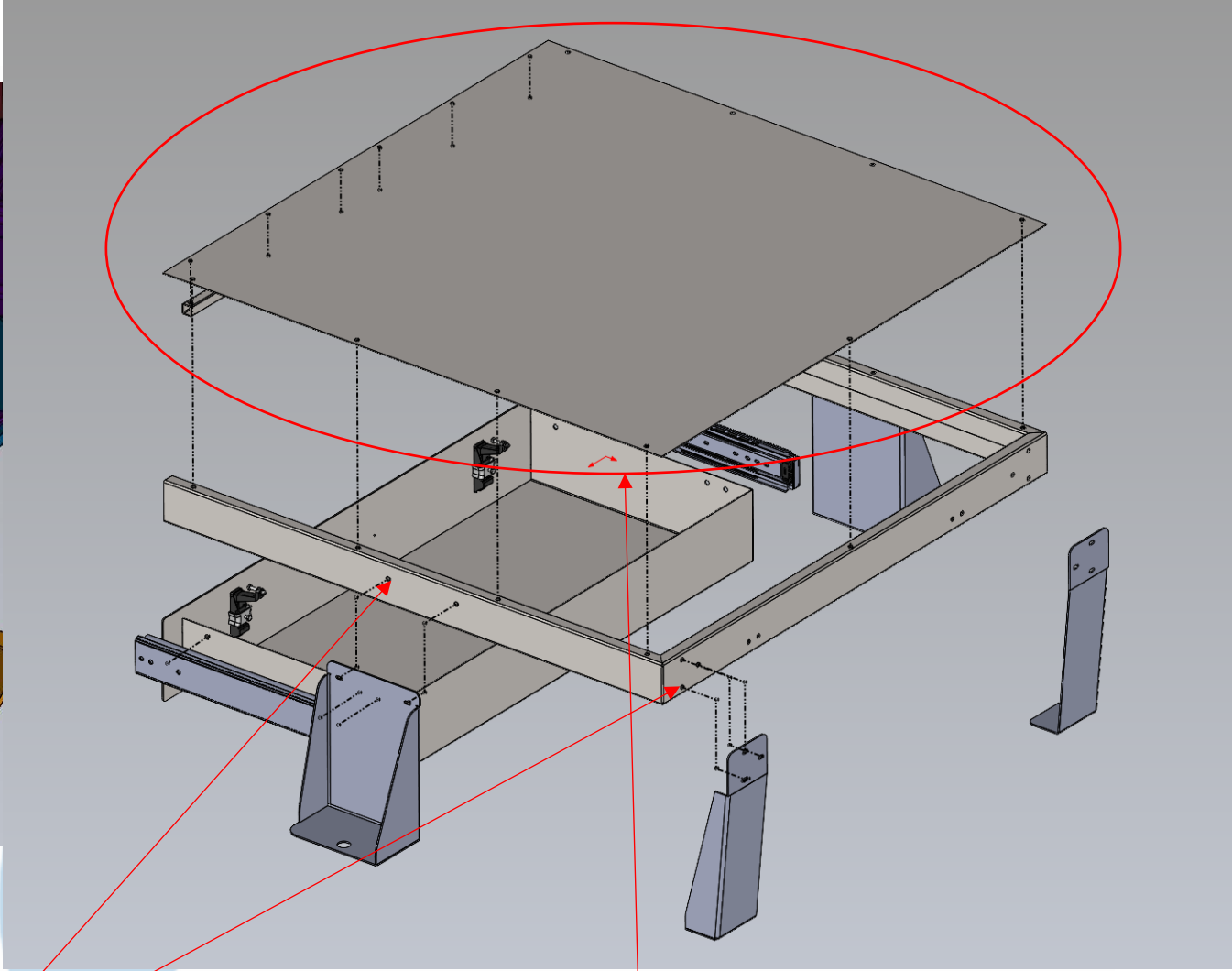
EMERGENCY EQUIPMENT



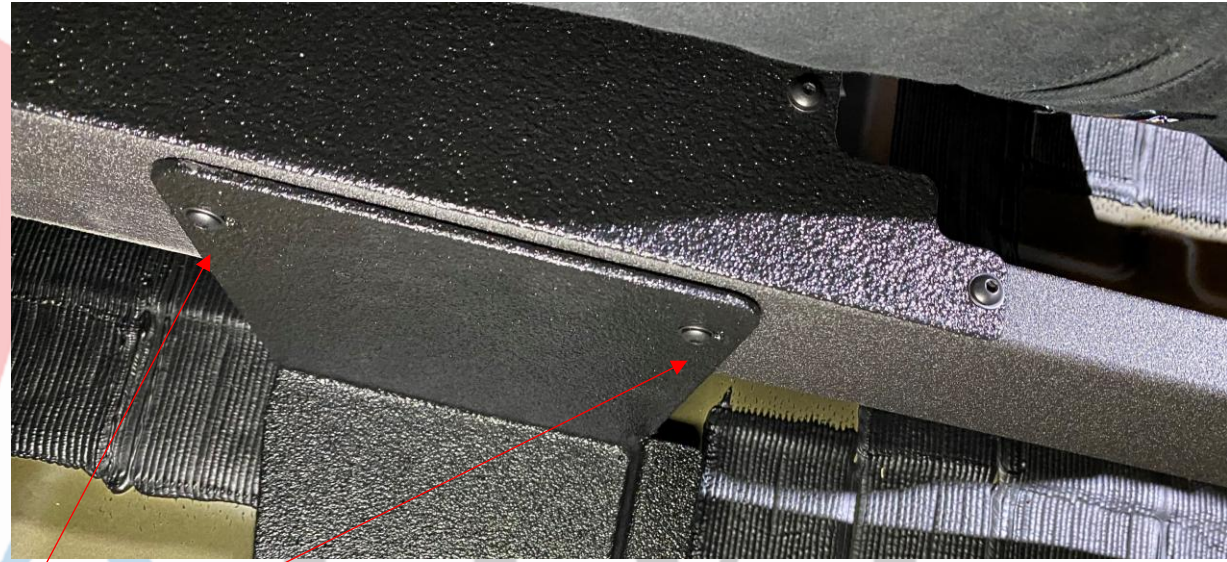
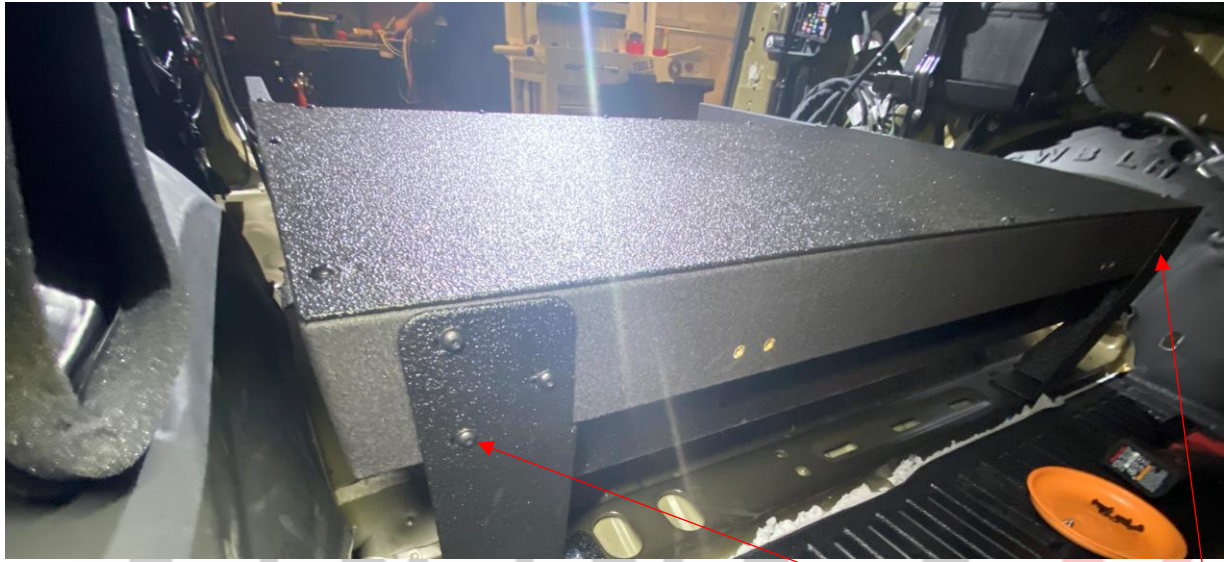


PLACE FRAME AND  
DRAWER ASSEMBLY INTO  
VEHICLE.

UTILIZE PROVIDED 10-32  
SCREWS AND WASHERS TO  
SECURE MOUNTS TO  
FRAME.



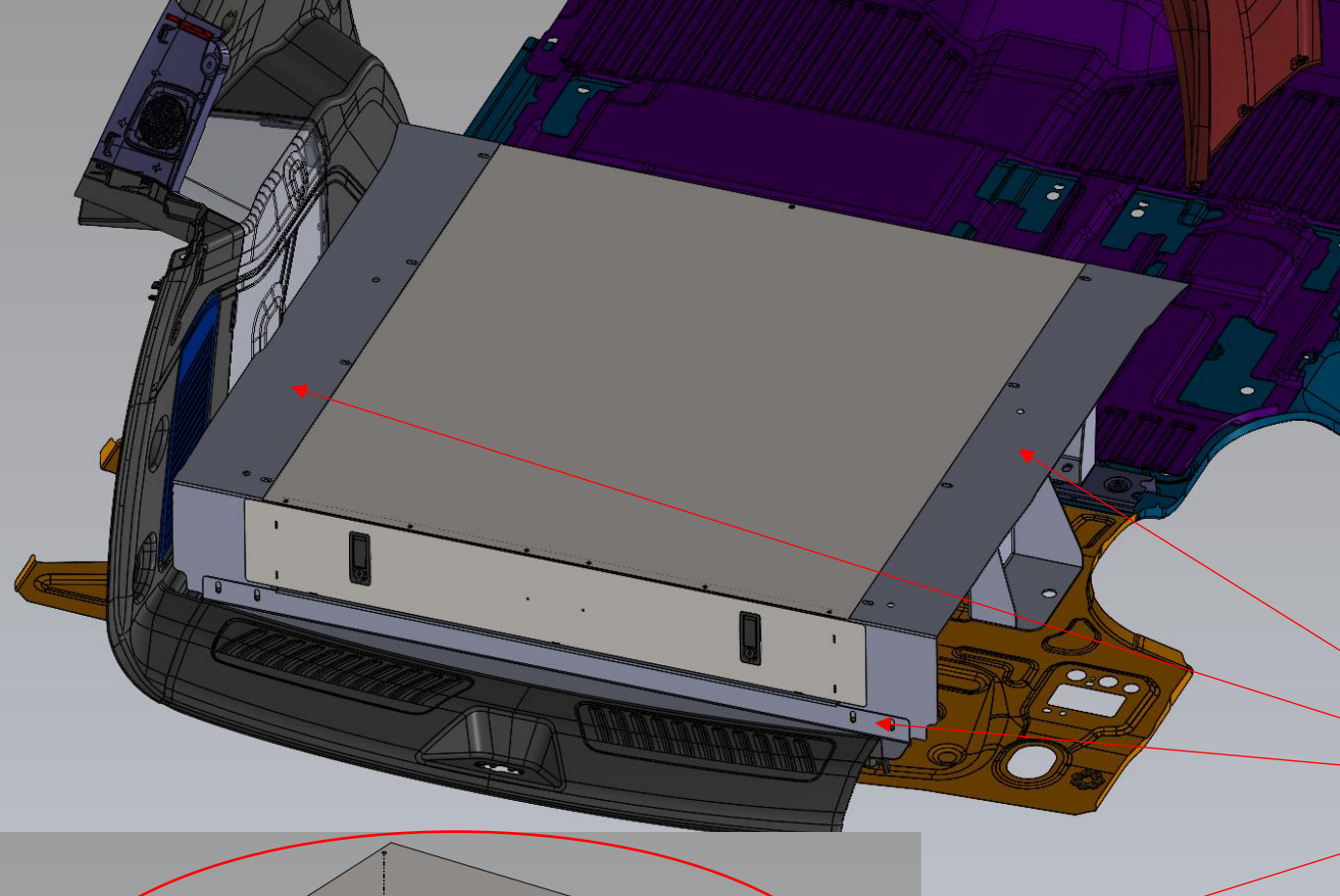
FRAME AND DRAWER ASSEMBLY WILL  
COME PRE-ASSEMBLED IN THE BOX.  
REMOVING THE TOP COVER CAN FACILITATE  
EASIER INSTALLATION.



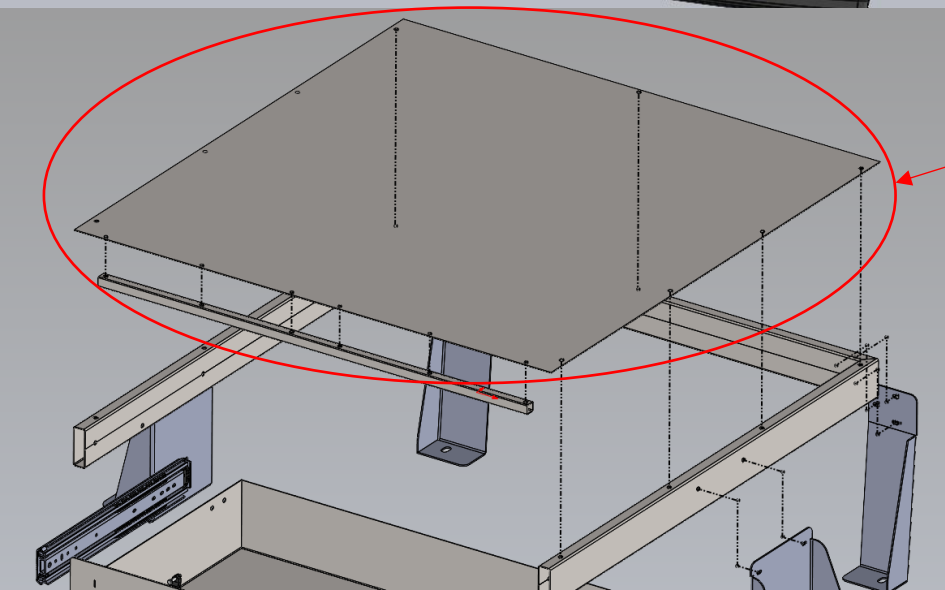
INSTALL SUPPLIED 10-32  
BHCS INTO ALL MOUNTING  
BRACKETS ON FRAME

EMERGENCY EQUIPMENT



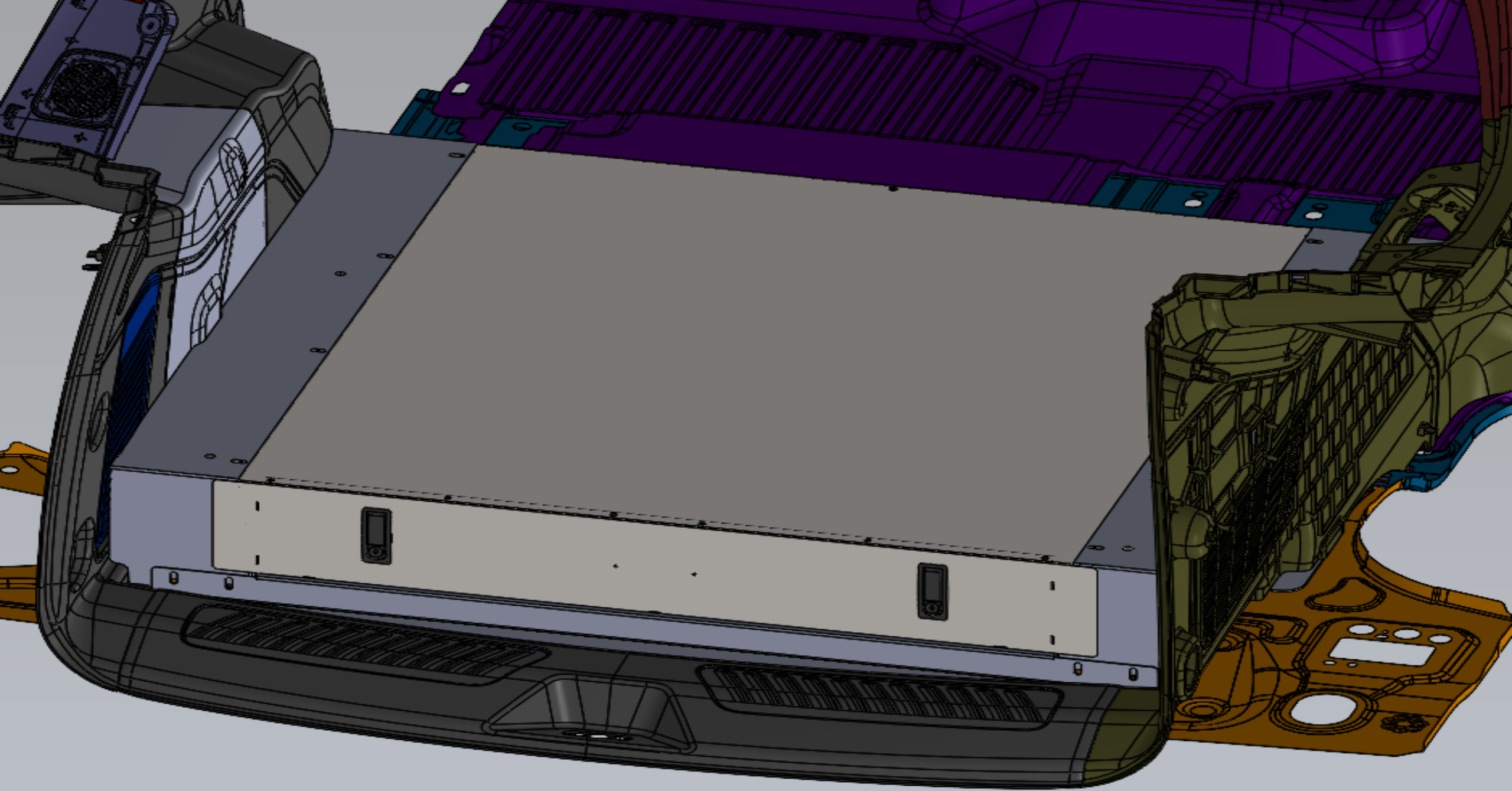


INSTALL TOP, PASSENGER, DRIVER, AND  
LOWER REAR FILLER PANELS INTO VEHICLE.



NCY EQUIPMENT







1616 MARLBOROUGH AVE. RIVERSIDE, CA 92507

FOR TECHNICAL ASSISTANCE WITH INSTALLATION OR  
OTHER QUESTIONS, PLEASE CALL (951) 222-2270

OR EMAIL [SUPPORT@IDSMP.COM](mailto:SUPPORT@IDSMP.COM)

*Thank you for your business!*