

EMERGENCY EQUIPMENT

INV-ES-FF-ET-TAH21

INSTALL INSTRUCTIONS



REMOVE LOWER TRIM IN  
REAR OF VEHICLE







REMOVE C & D PILLAR TRIM FROM VEHICLE

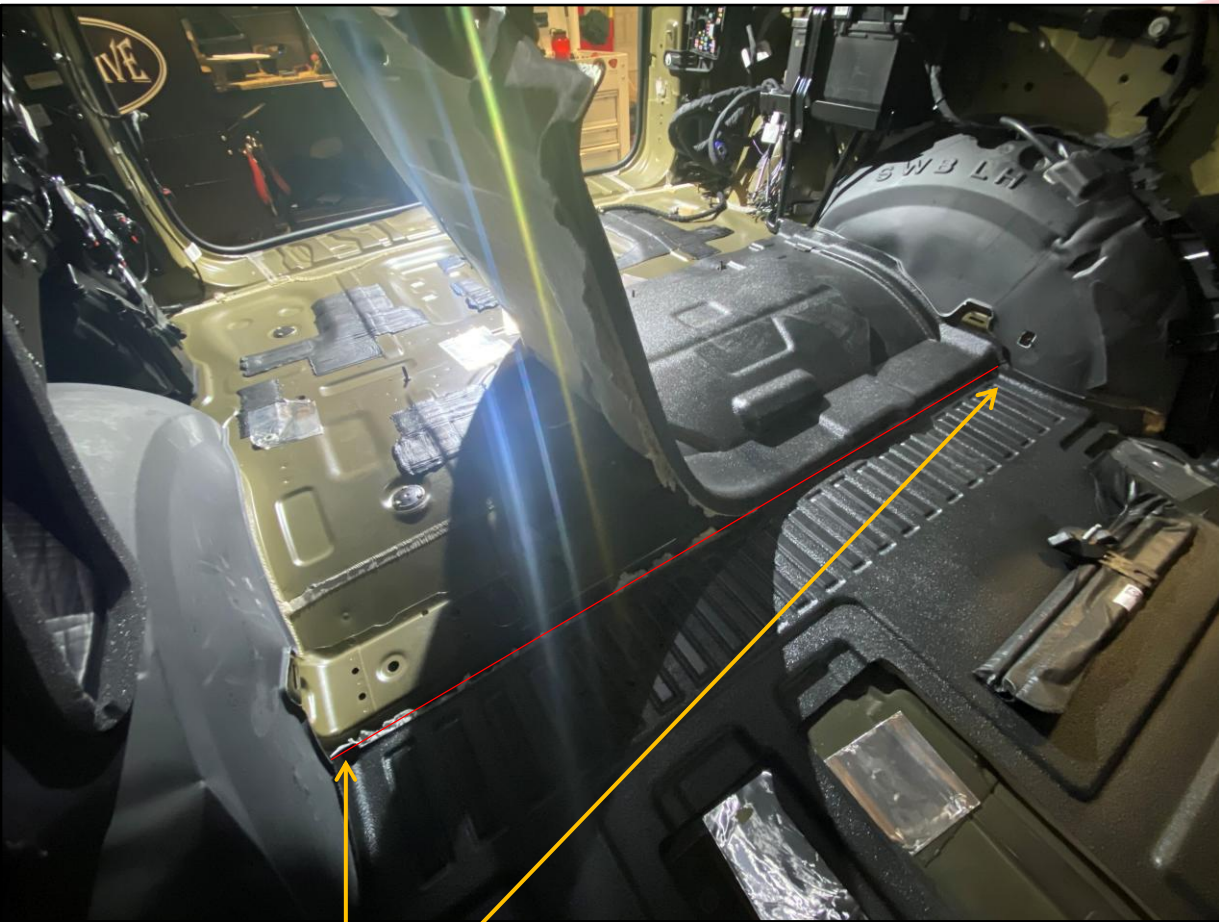
REMOVE REAR CARGO TRIM FROM VEHICLE



REMOVE REAR FLOOR MAT

UTILITZE THIS TIME TO RUN ANY LIGHTING /  
CABLES, AS ONCE THE FLOOR IS IN THE TRIM WILL  
NO LONGER BE REMOVABLE WITH FALSE FLOOR IN  
THE VEHICLE.





USE A UTILITY KNIFE TO CUT ALONG THE FLOOR MAT ON THE 3<sup>RD</sup> ROW SEAT RAIL. REMOVE TRIMMED PIECE.

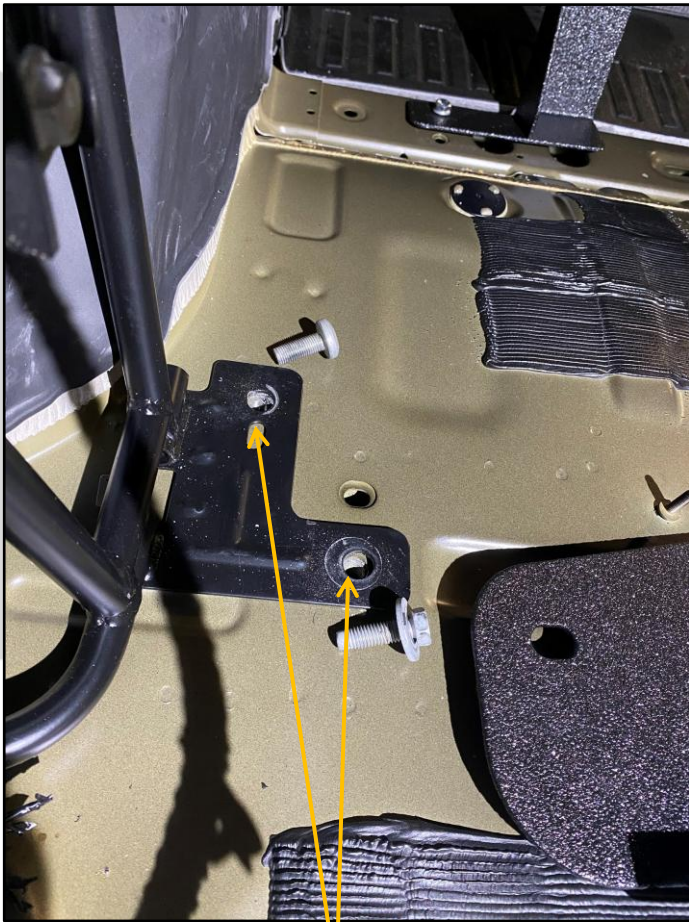


SHORT FOOT

LONG FOOT

USING HARDWARE PROVIDED, INSTALL TWO FRONT MOUNTING FEET TO VEHICLE.

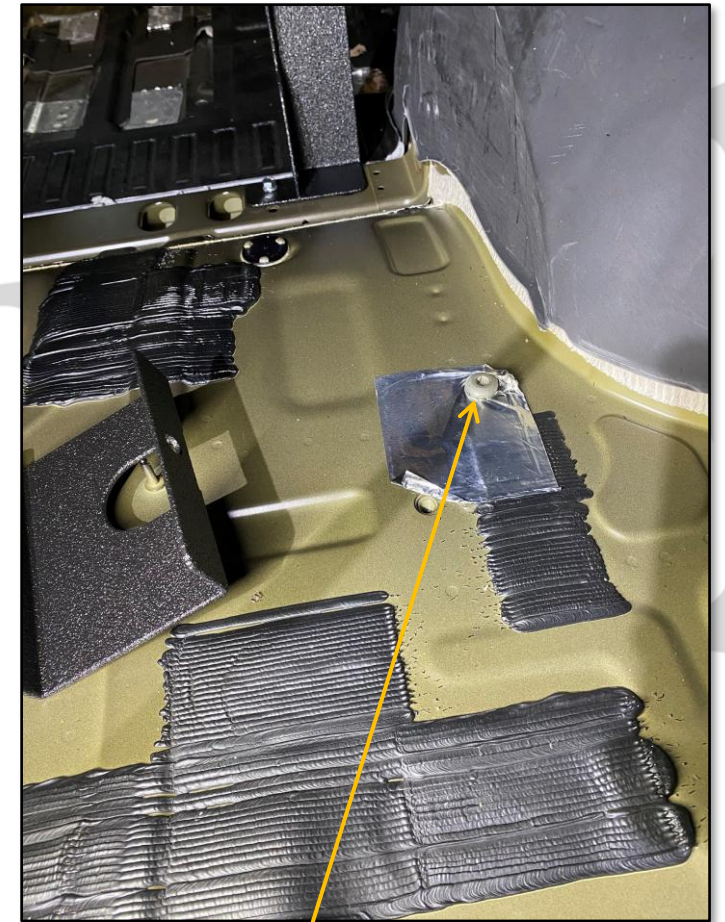




REMOVE  
FACTORY BOLTS  
FROM THESE  
TWO LOCATIONS

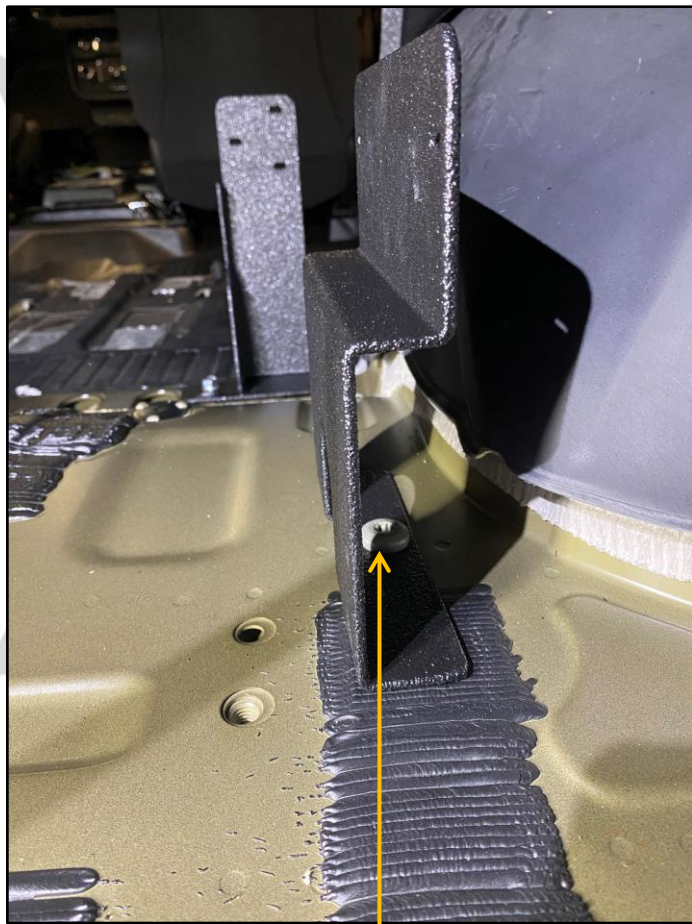


USE FACTORY HARDWARE TO  
INSTALL DRIVERS SIDE REAR  
FOOT

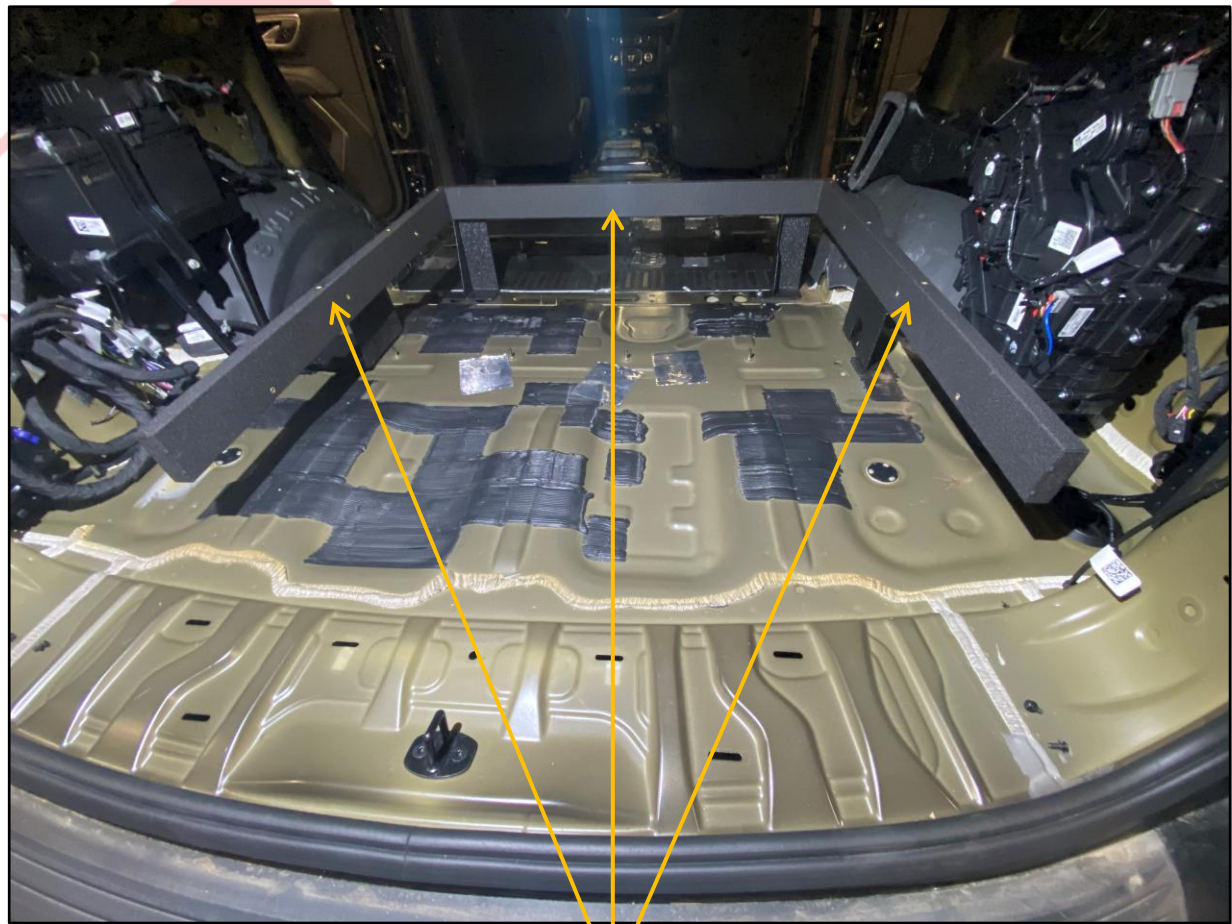


REMOVE FACTORY BOLT  
FROM THIS LOCATION





INSTALL PASSENGER REAR  
FOOT USING REMOVED  
FACTORY BOLT



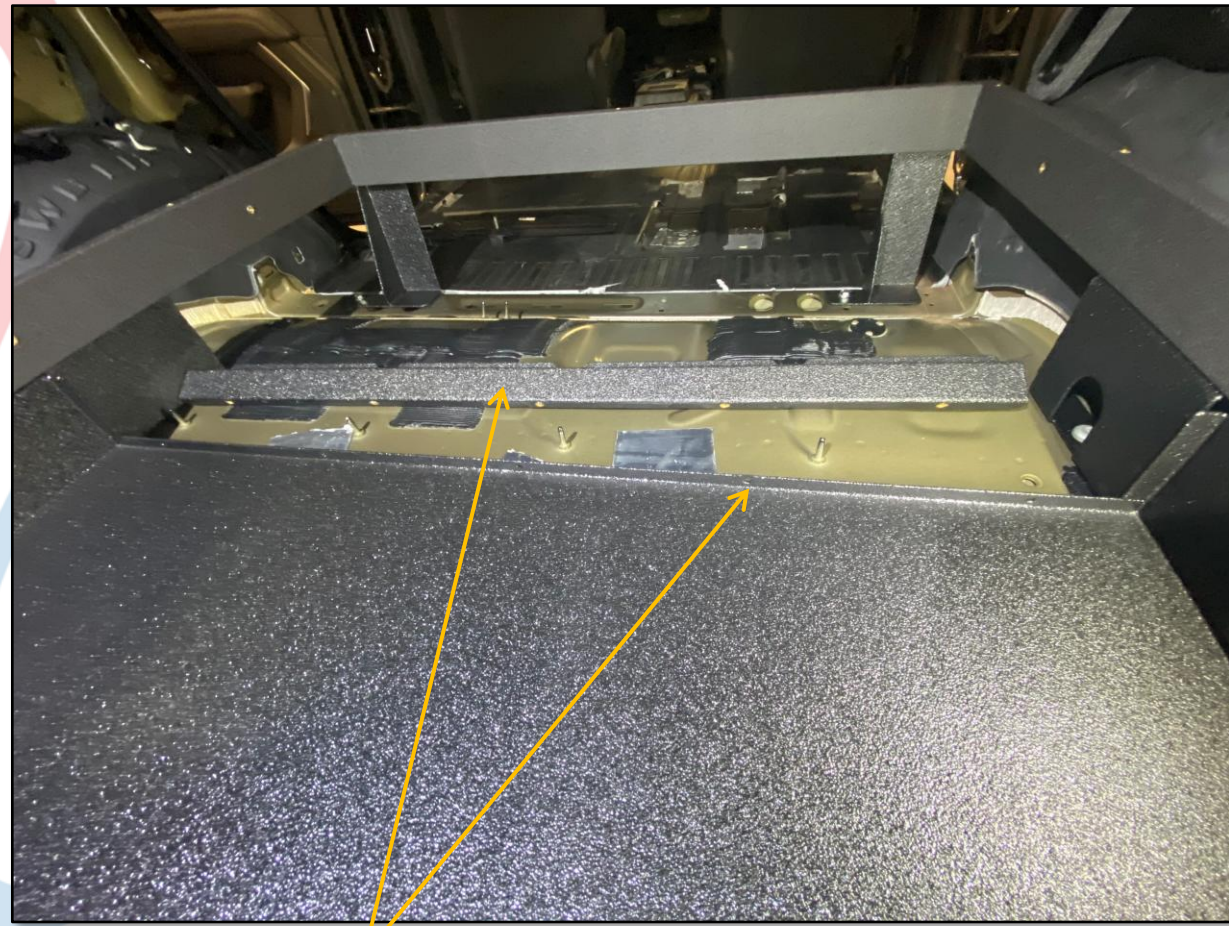
PLACE FRAME INTO VEHICLE





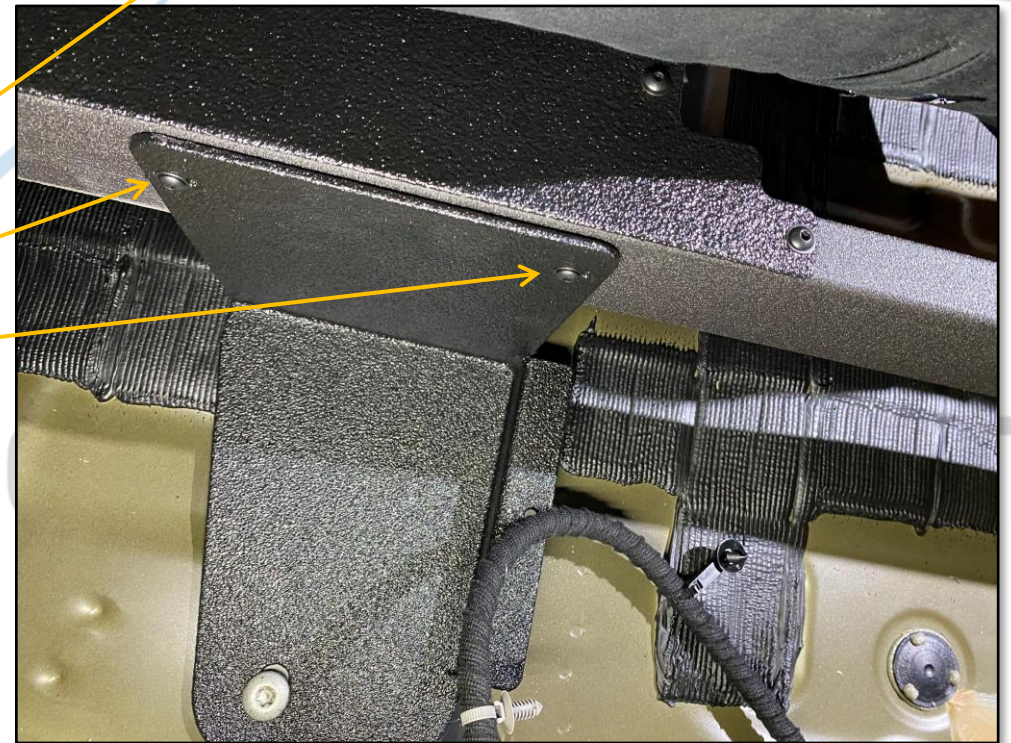
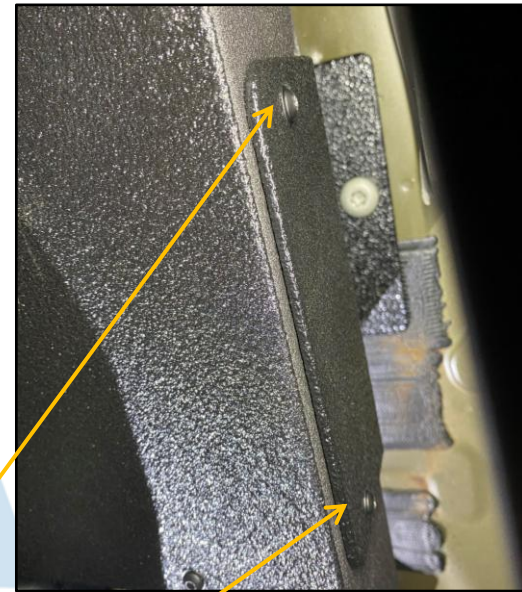
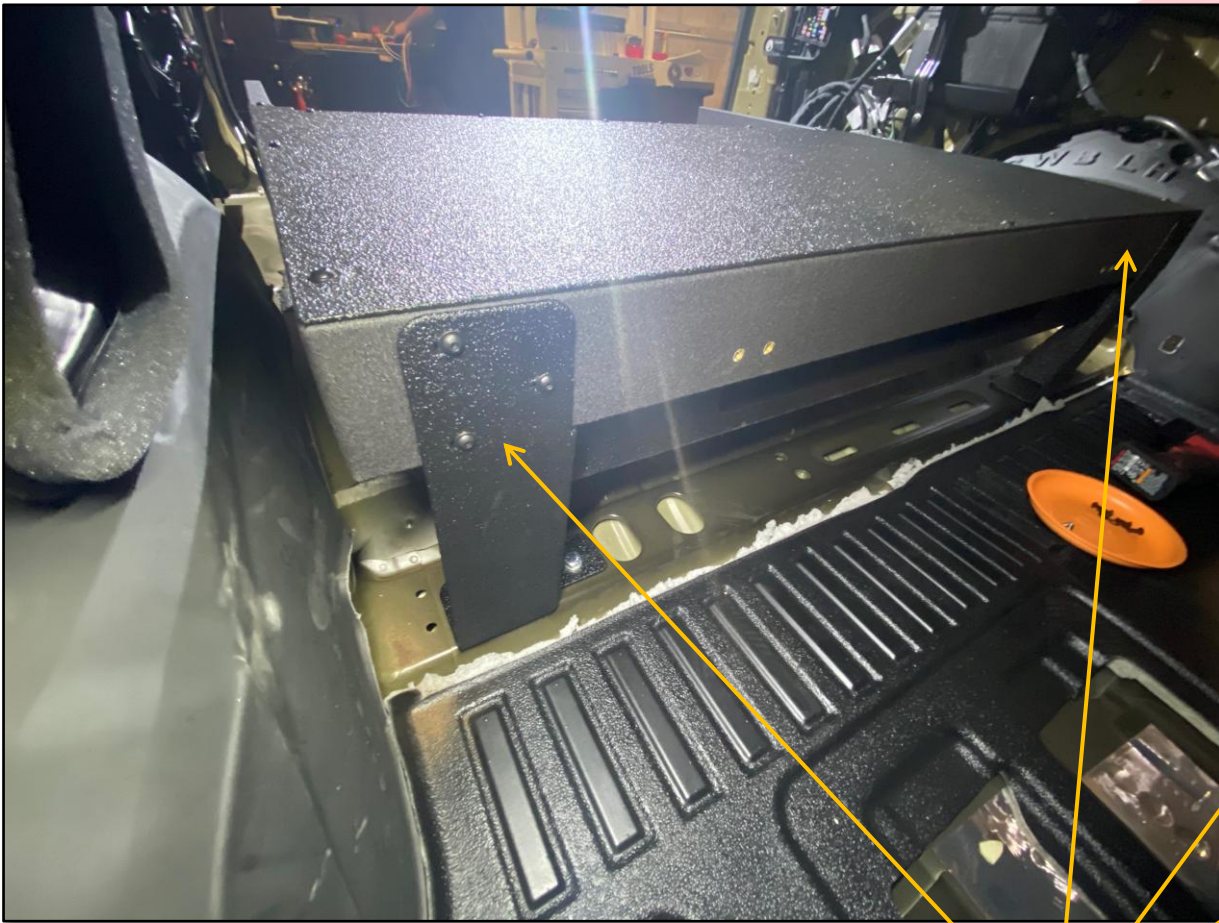
INSERT PACKAGE TRAY  
UNDERNEATH FRAME

PACKAGE TRAY COMES ASSEMBLED IN  
REVERSE ORIENTATION OUT OF  
PACKAGE – PLEASE REVERSE BEFORE  
INSTALL.



INSTALL SUPPORT BAR TO BACK OF  
PACKAGE TRAY – BAR IS MADE TO  
COVER FACTORY STUDS.



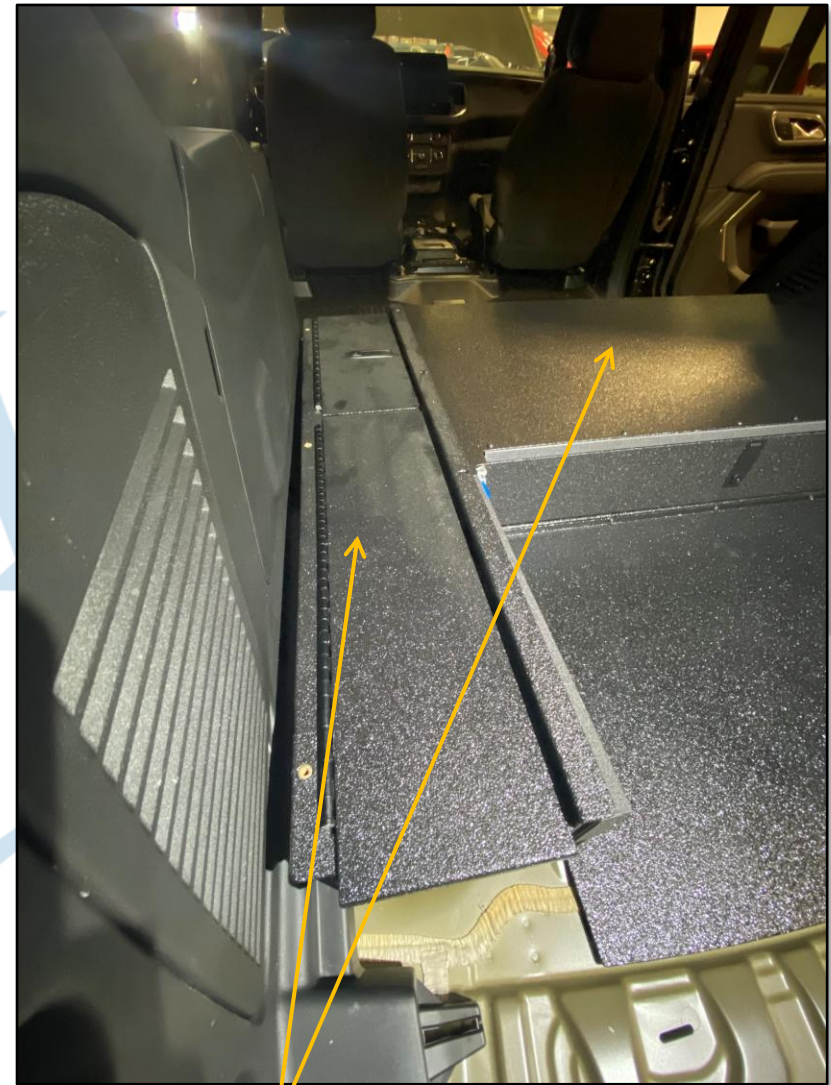


INSTALL SUPPLIED 10-32 BHCS INTO  
ALL MOUNTING BRACKETS ON FRAME



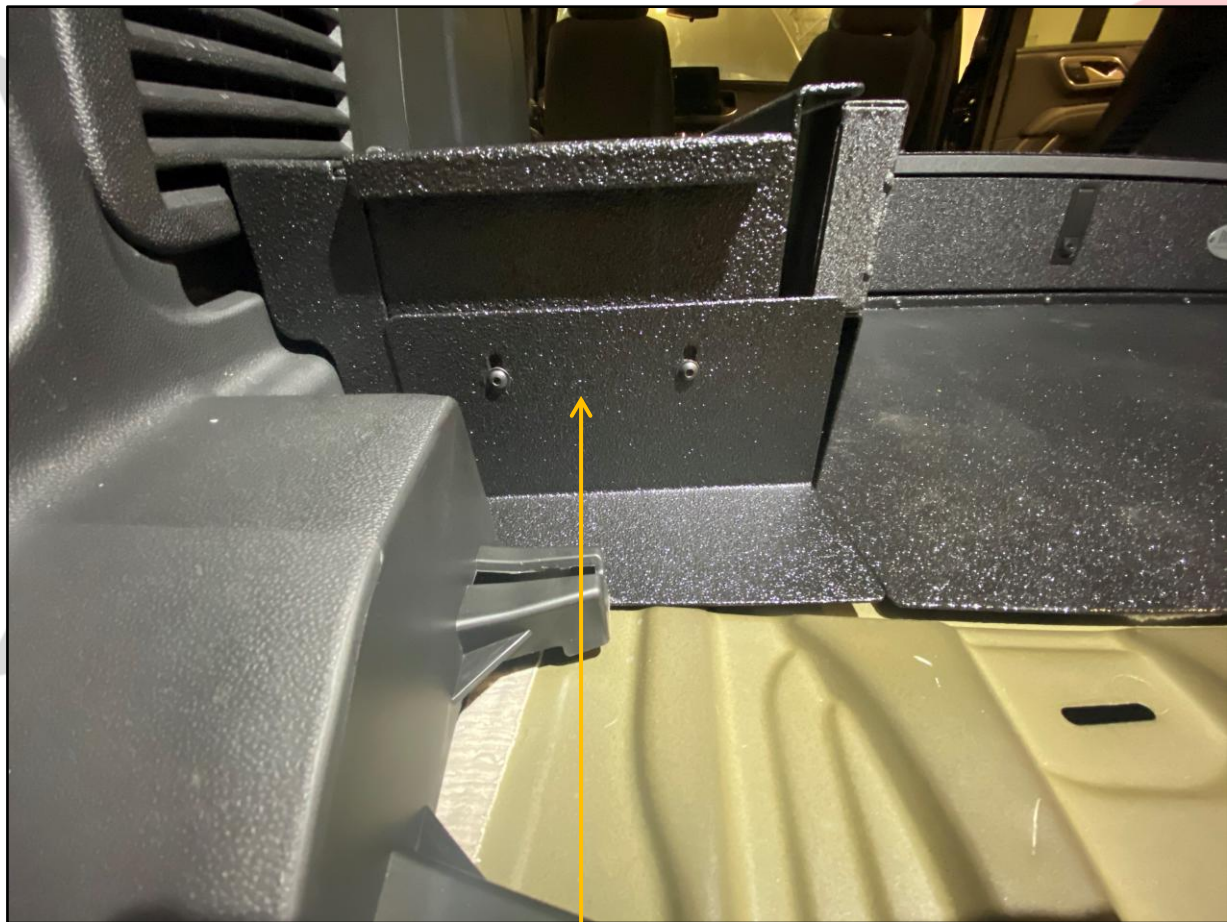


RE-INSTALL ELECTRONICS DRAWER

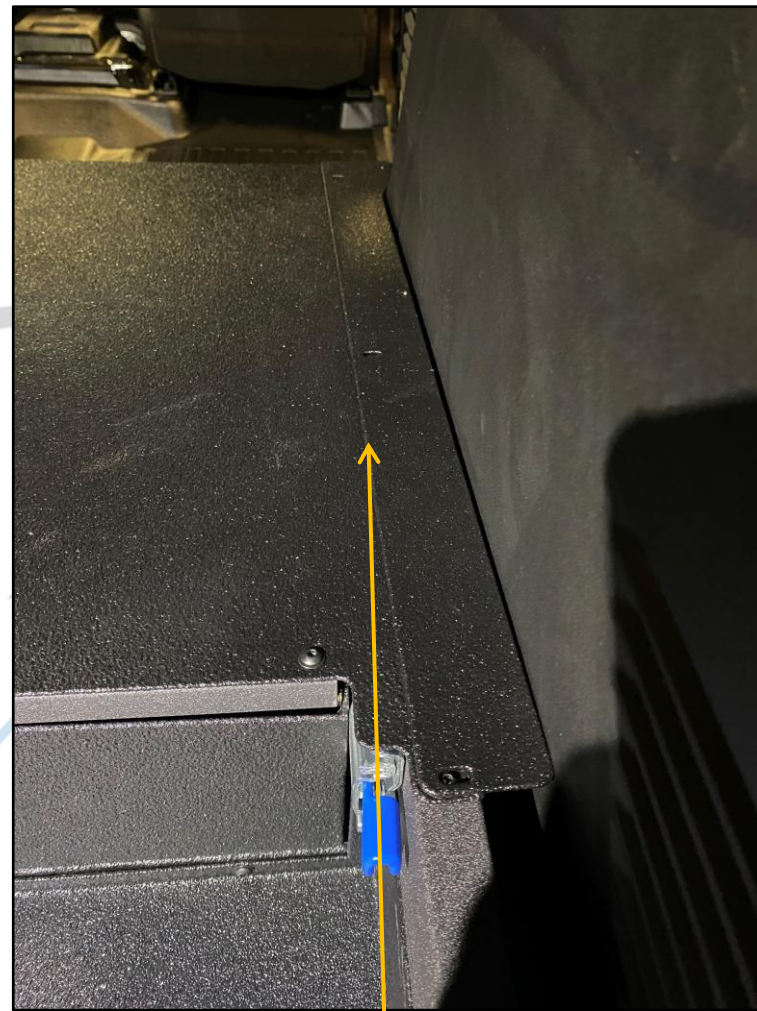


INSTALL SIDE BOXES, THEN INSTALL  
LID ONTO UNIT  
\*\* SIDE BOX FLANGE WILL GO  
UNDERNEATH THE LID\*\*



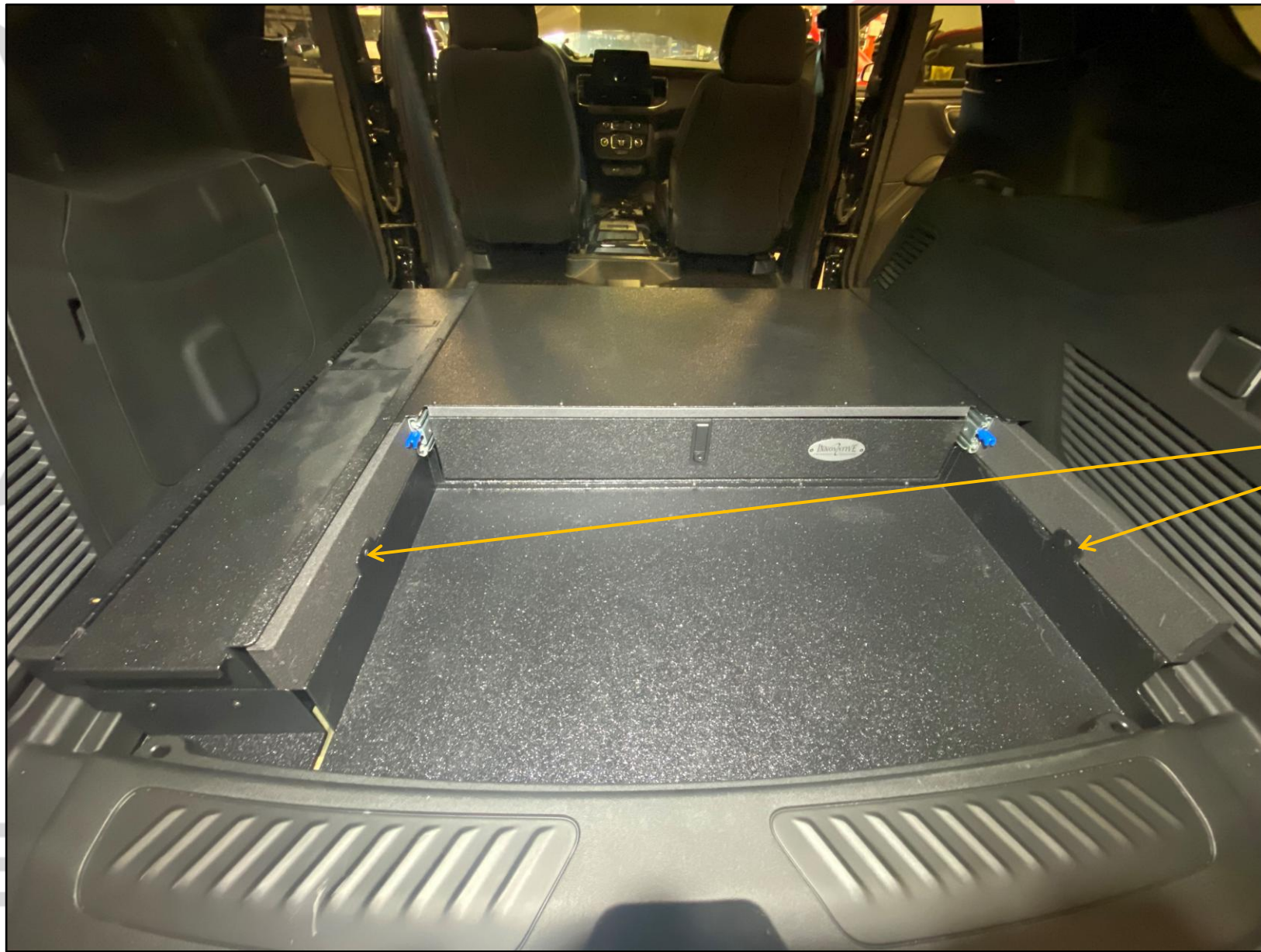


INSTALL FILLER PANEL ONTO FRONT  
OF THE SIDE BOXES



INSTALL SIDE FILLER PANEL  
ONTOP OF LID PANEL ON  
PASSENGER SIDE



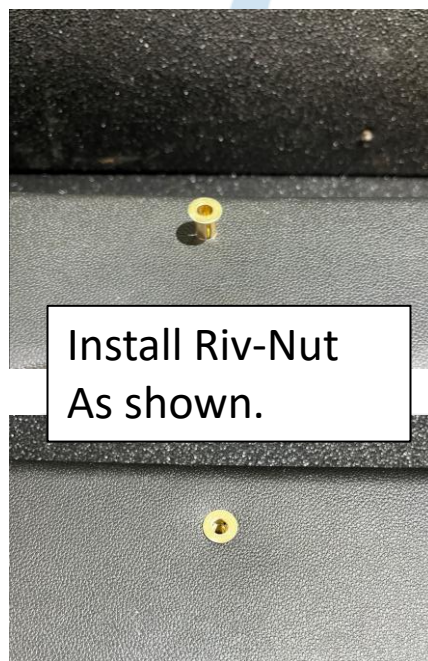
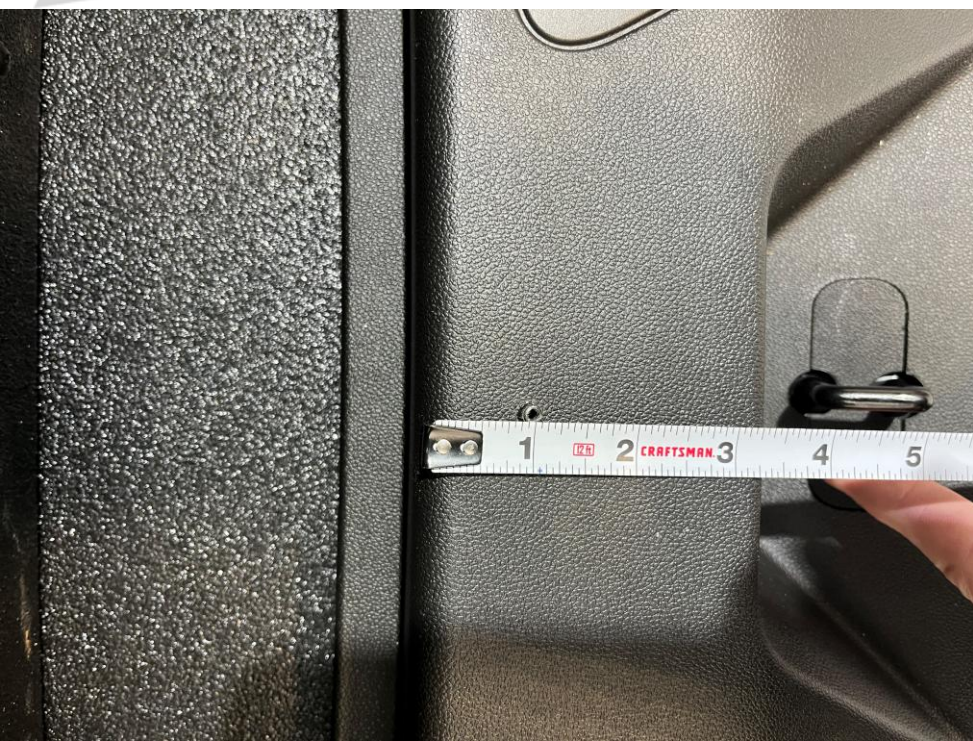


INSTALL THE TWO FLAT  
HEAD SCREWS INTO THESE  
EARS INTO THE FRAME  
NOTE: OMIT THIS STEP IF  
INSTALLING ORGANIZER



## NOTE FOR OPTIONAL PARTS!

- If your installation contains a –L/O in the part number
  - Please install this magnet provided with the hardware kit. This is to keep the lid from rattling around during motion.
- Utilizes
  - 1 10-32 Riv-Nut
  - 1 Magnet
  - 1 10-32 BHCS

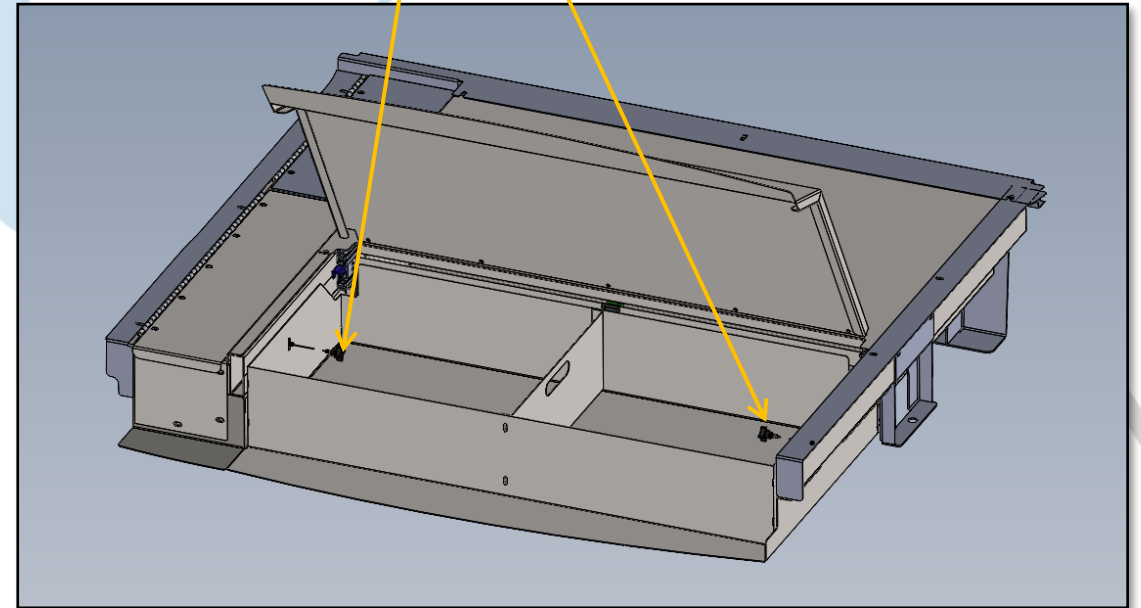
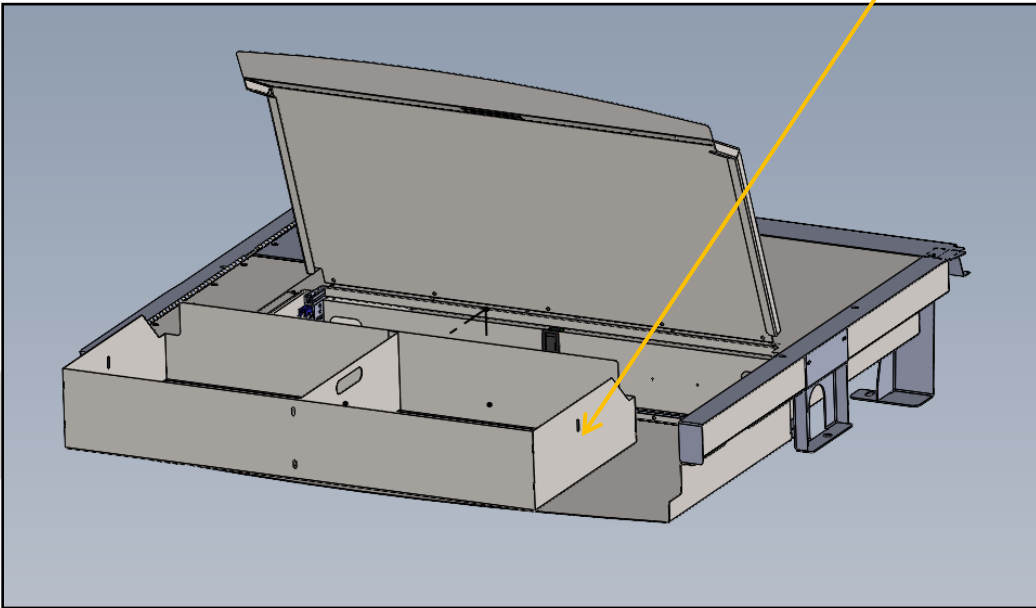
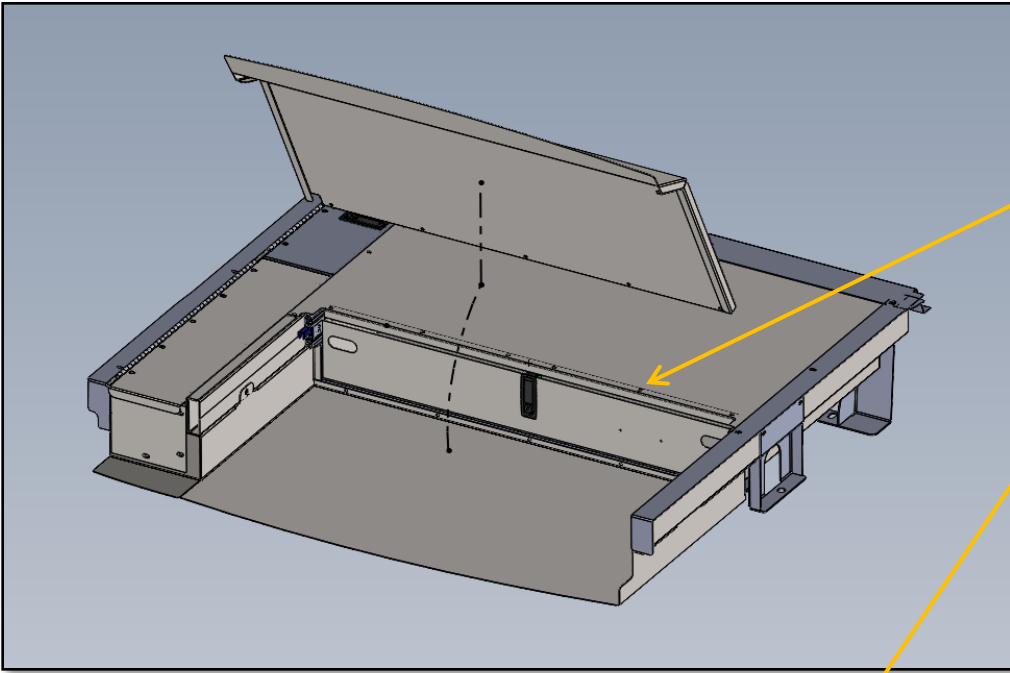




INSTALL LID WITH PROVIDED HINGE AND HARDWARE

PLACE ORGANIZER IN PACKAGE TRAY AS SHOWN

SECURE ORGANIZER WITH PROVIDED THUMBSCREWS







1616 MARLBOROUGH AVE. RIVERSIDE, CA 92507

FOR TECHNICAL ASSISTANCE WITH INSTALLATION OR  
OTHER QUESTIONS, PLEASE CALL (951) 222-2270

OR EMAIL [SUPPORT@IDSMP.COM](mailto:SUPPORT@IDSMP.COM)

*Thank you for your business!*