

EMERGENCY EQUIPMENT

INV-ES-FF-ET-TAH21

STOP STICK

INSTALL INSTRUCTIONS



REMOVE LOWER TRIM IN
REAR OF VEHICLE



EMERGENCY EQUIPMENT



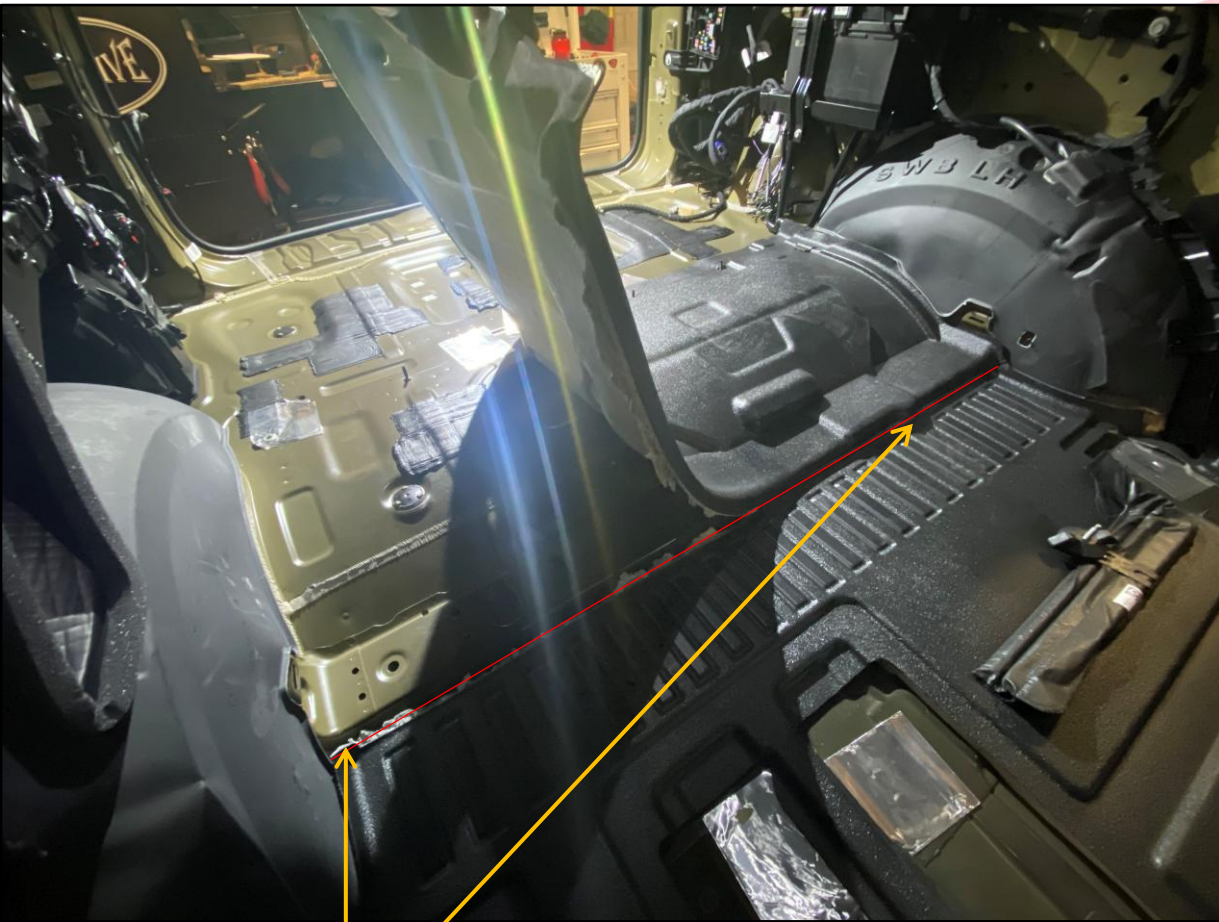
REMOVE C & D PILLAR TRIM FROM VEHICLE

REMOVE REAR CARGO TRIM FROM VEHICLE



REMOVE REAR FLOOR MAT

UTILITZE THIS TIME TO RUN ANY LIGHTING /
CABLES, AS ONCE THE FLOOR IS IN THE TRIM WILL
NO LONGER BE REMOVABLE WITHOUT REMOVAL.



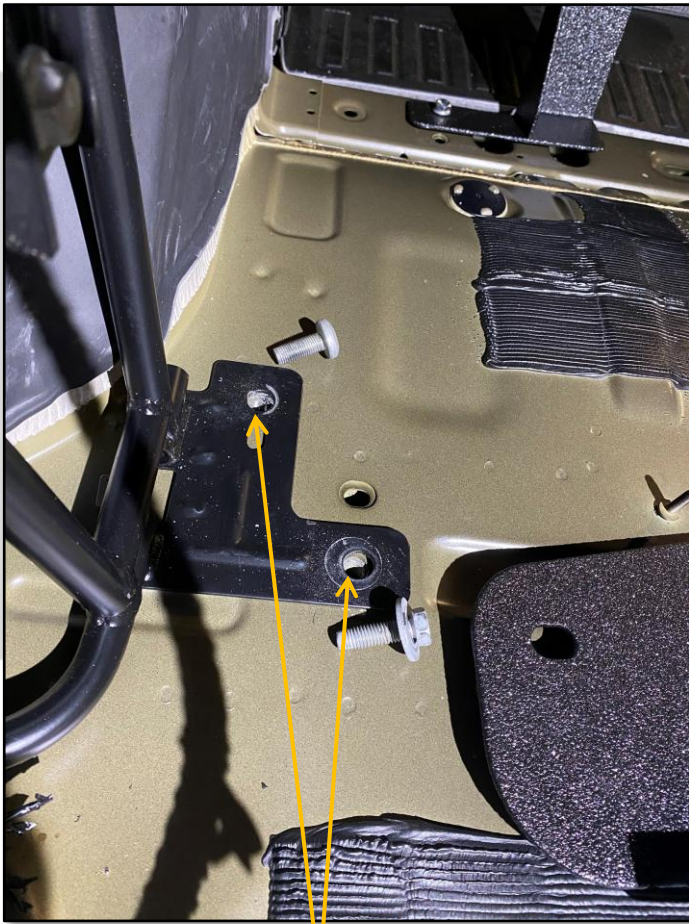
USE A UTILITY KNIFE TO CUT ALONG
THE FLOOR MAT ON THE 3RD ROW
SEAT RAIL. REMOVE TRIMMED PIECE.



SHORT FOOT

LONG FOOT

USING HARDWARE PROVIDED,
INSTALL TWO FRONT MOUNTING
FEET TO VEHICLE.



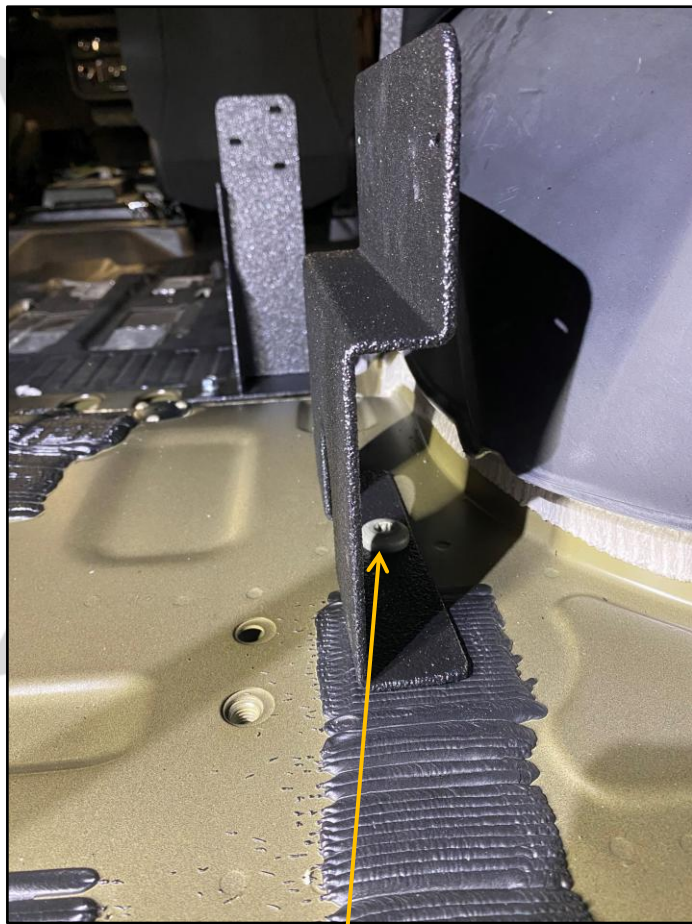
REMOVE
FACTORY BOLTS
FROM THESE
TWO LOCATIONS



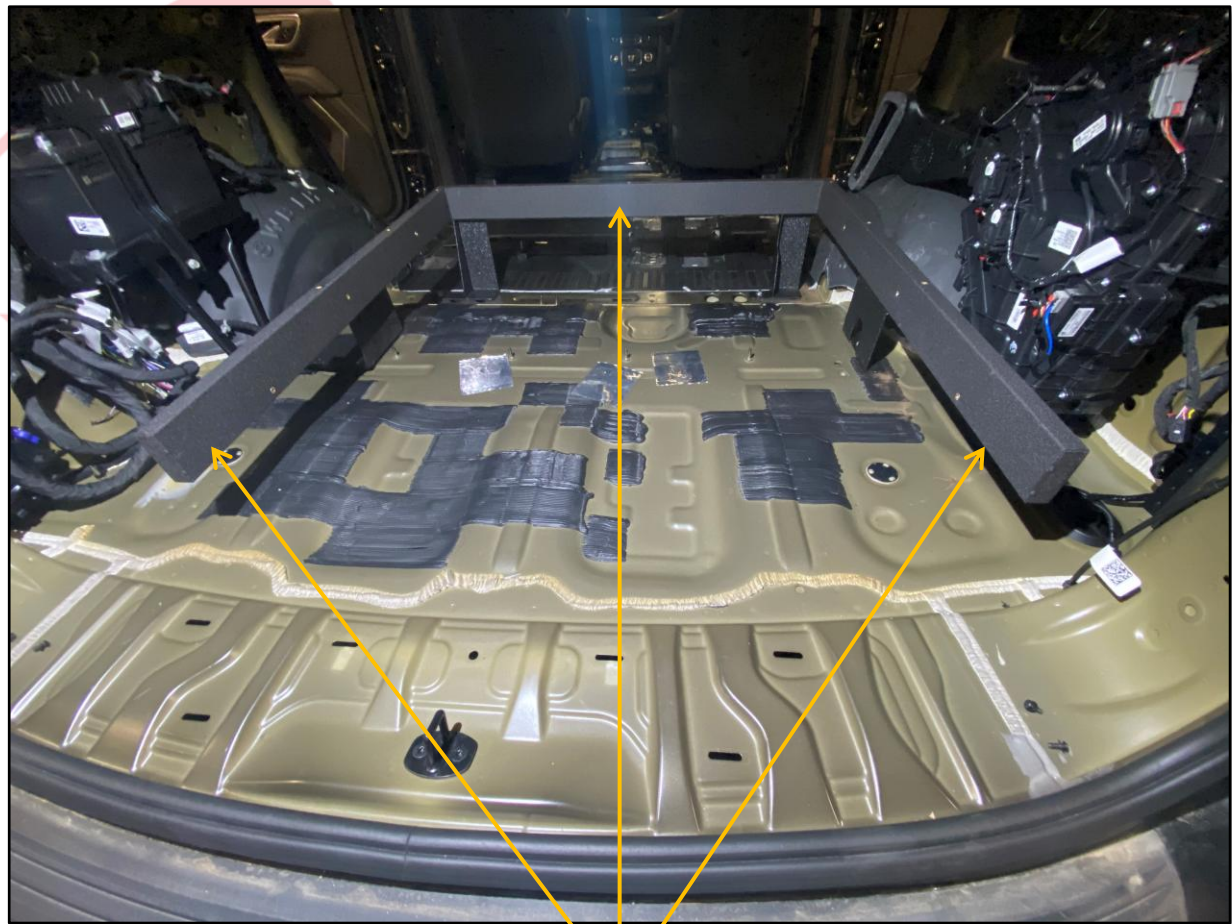
USE FACTORY HARDWARE TO
INSTALL DRIVERS SIDE REAR
FOOT



REMOVE FACTORY BOLT
FROM THIS LOCATION



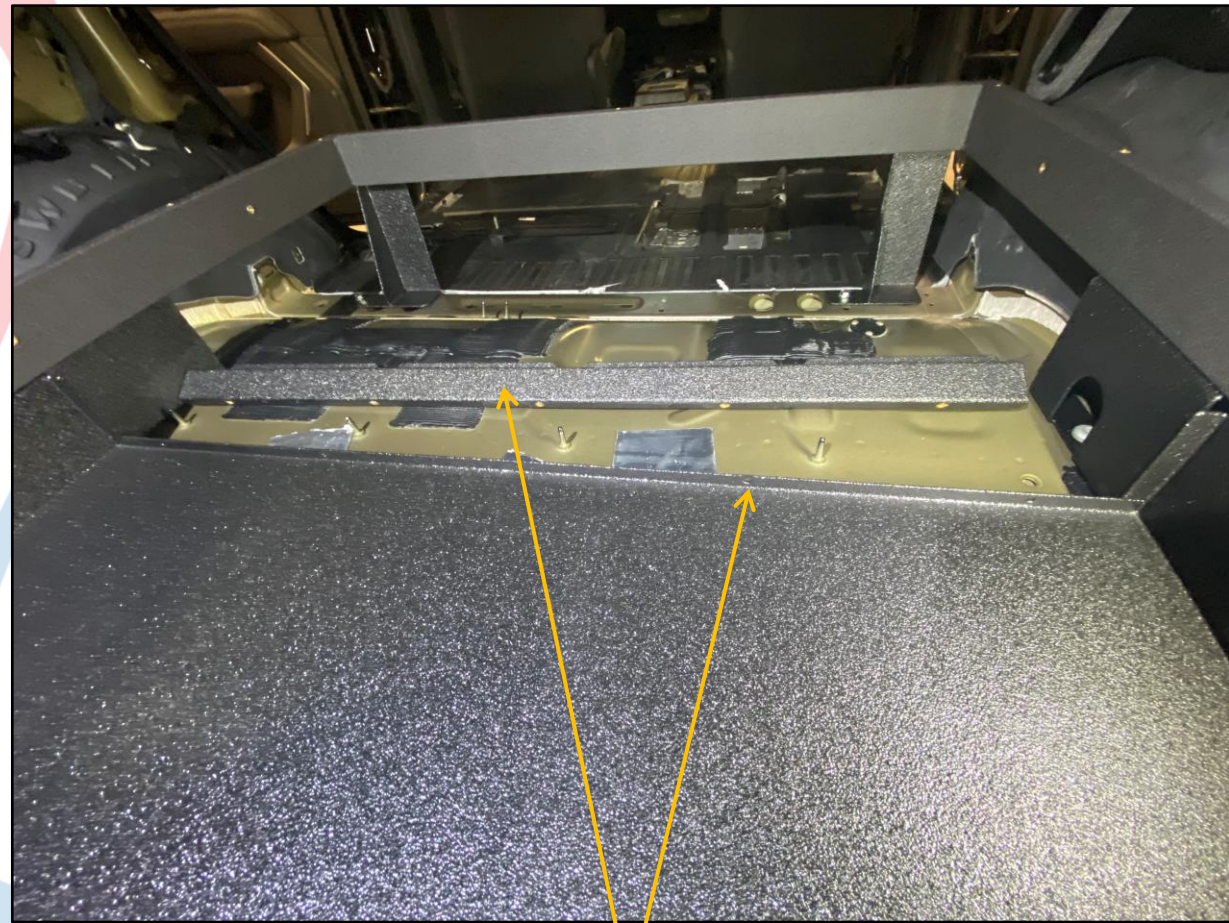
INSTALL PASSENGER REAR
FOOT USING REMOVED
FACTORY BOLT



PLACE FRAME INTO VEHICLE



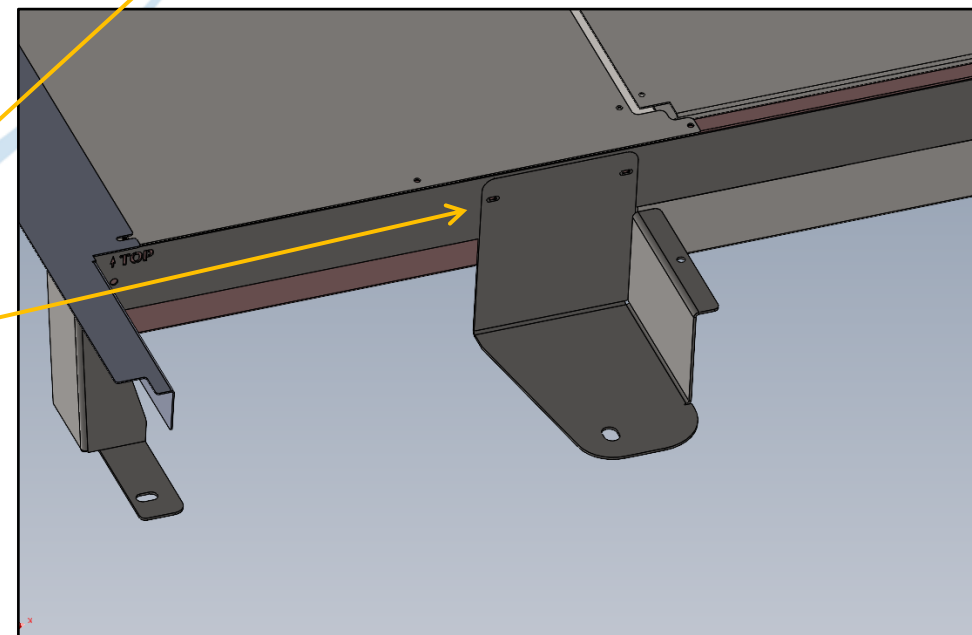
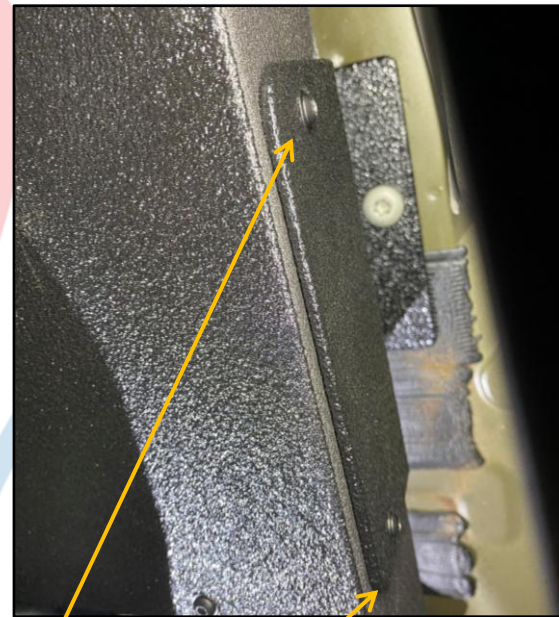
INSERT PACKAGE TRAY
UNDERNEATH FRAME



INSTALL SUPPORT BAR TO BACK OF PACKAGE
TRAY

EMERGENCY

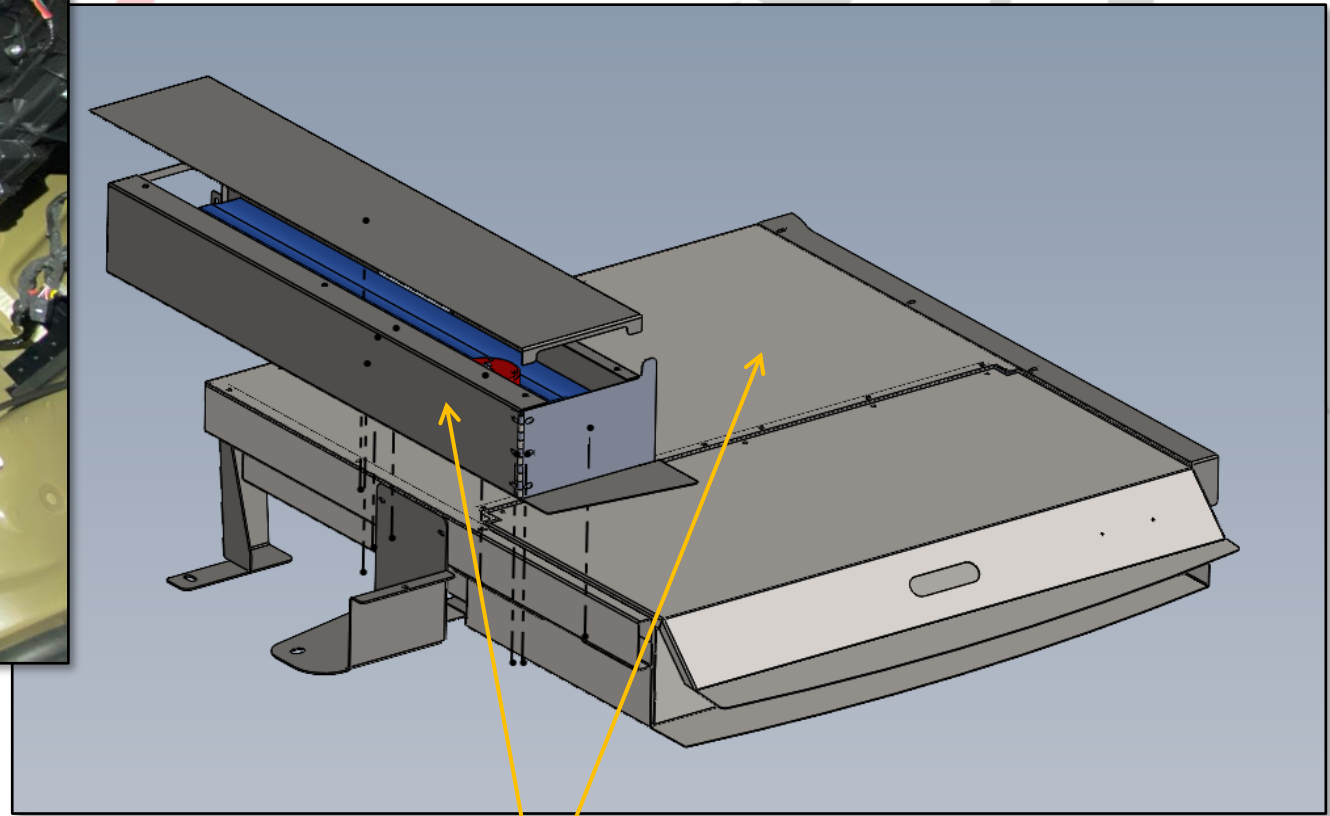
EQUIPMENT



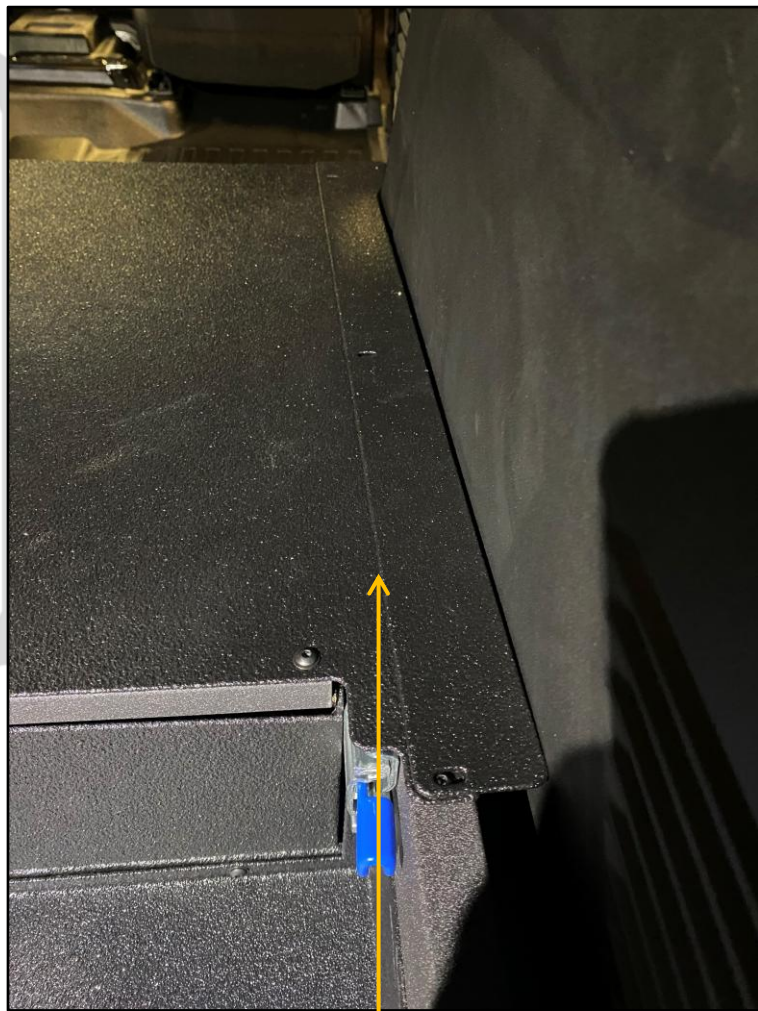
INSTALL SUPPLIED 10-32
BHCS INTO ALL MOUNTING
BRACKETS ON FRAME



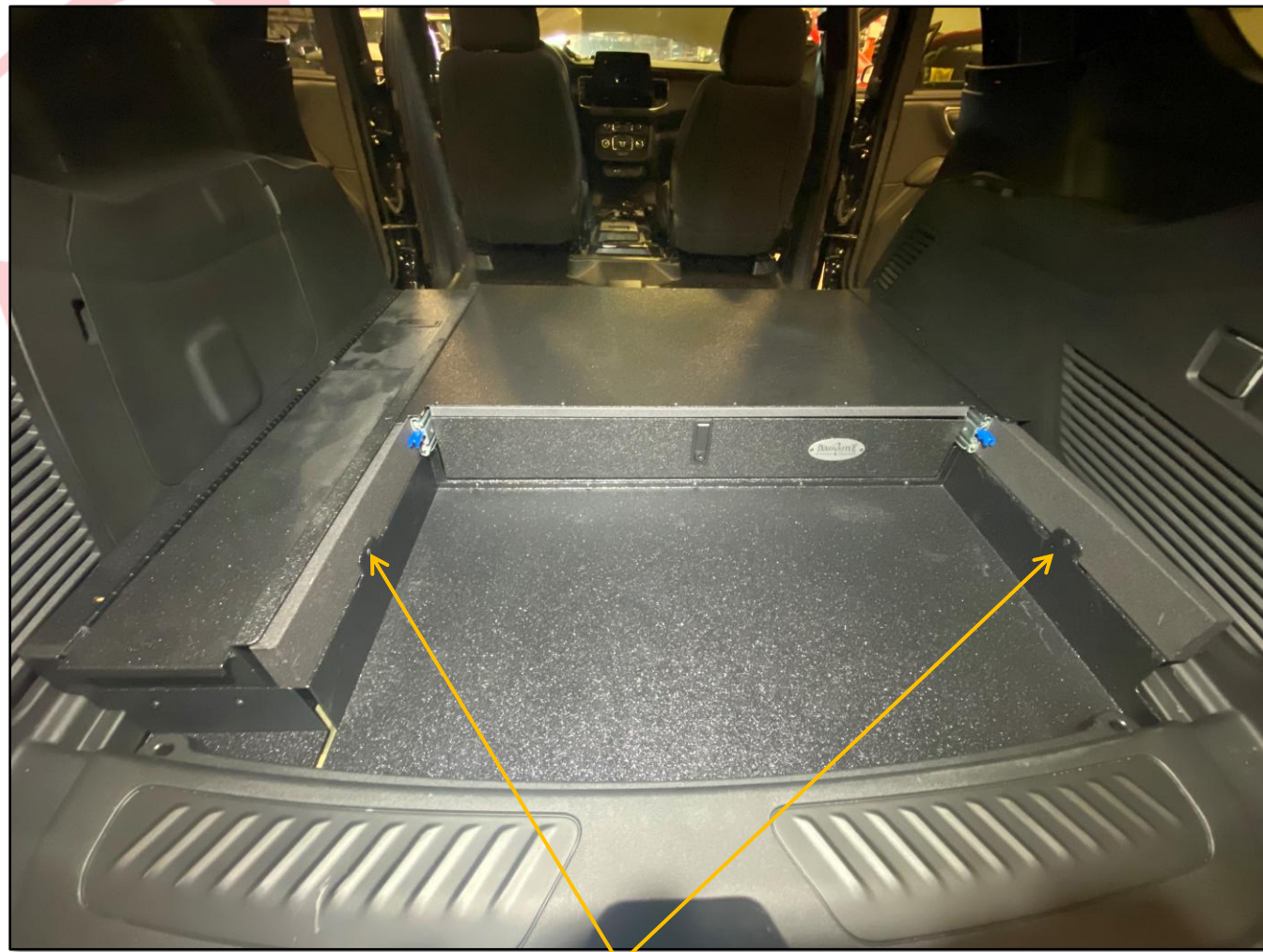
RE-INSTALL ELECTRONICS DRAWER



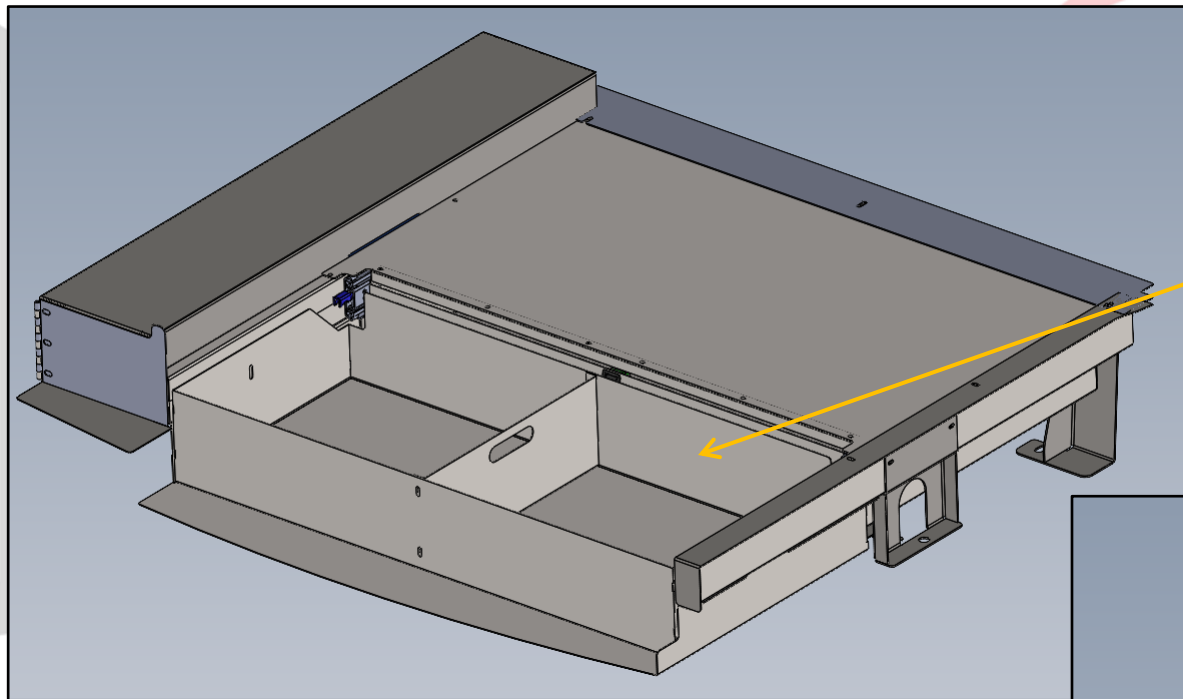
USING PROVIDED 10-32 HARDWARE,
INSTALL STOP STICK BOXES, THEN
INSTALL LID ONTO UNIT



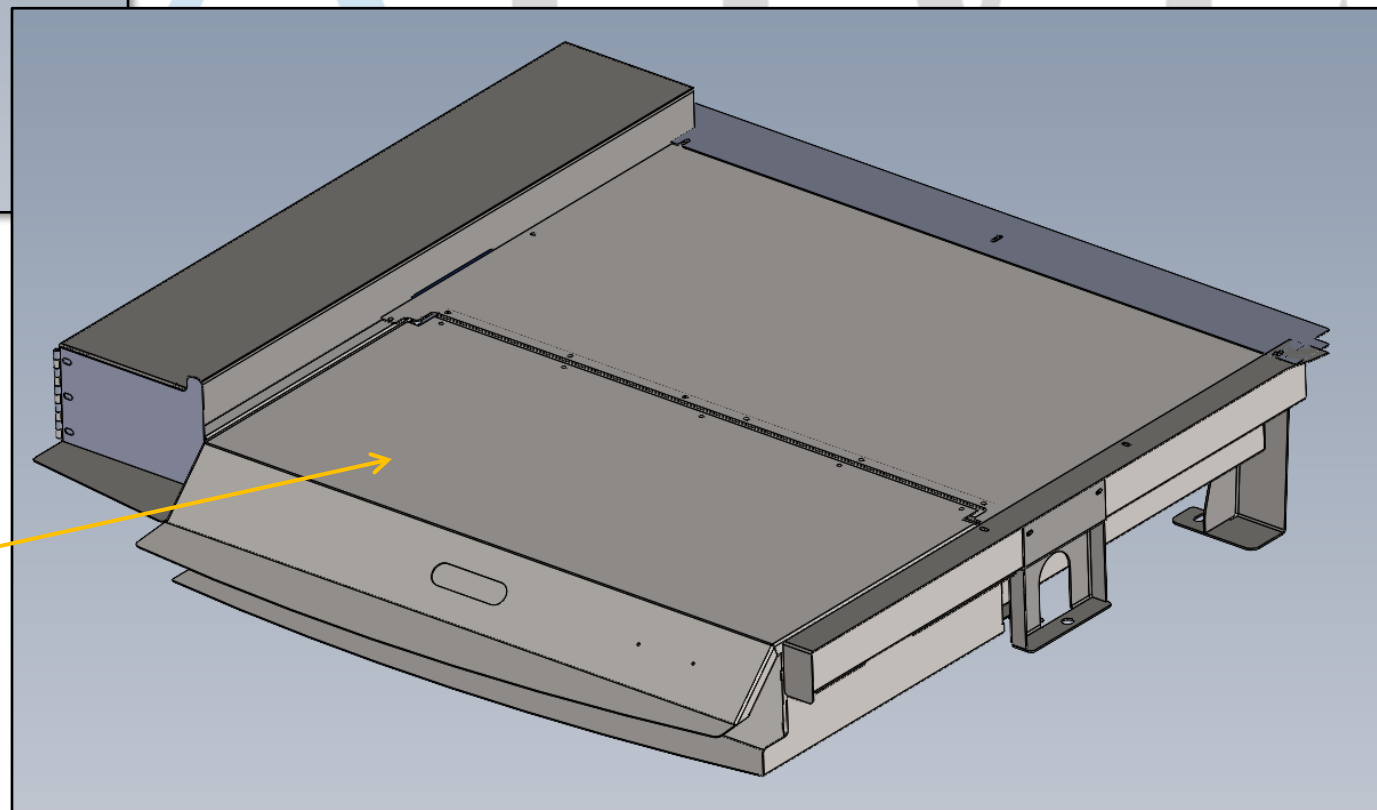
INSTALL SIDE FILLER PANEL
ONTOP OF LID PANEL ON
PASSENGER SIDE



INSTALL THE TWO FLAT
HEAD SCREWS INTO THESE
EARS INTO THE FRAME



INSTALL ORGANIZER TRAY



INSTALL HINGED LID

INSTALL IS COMPLETE



1616 MARLBOROUGH AVE. RIVERSIDE, CA 92507

FOR TECHNICAL ASSISTANCE WITH INSTALLATION OR
OTHER QUESTIONS, PLEASE CALL (951) 222-2270

OR EMAIL SUPPORT@IDSMP.COM

Thank you for your business!