

EMERGENCY EQUIPMENT

INV-ES-FF-ET-TAH21-WESTIN

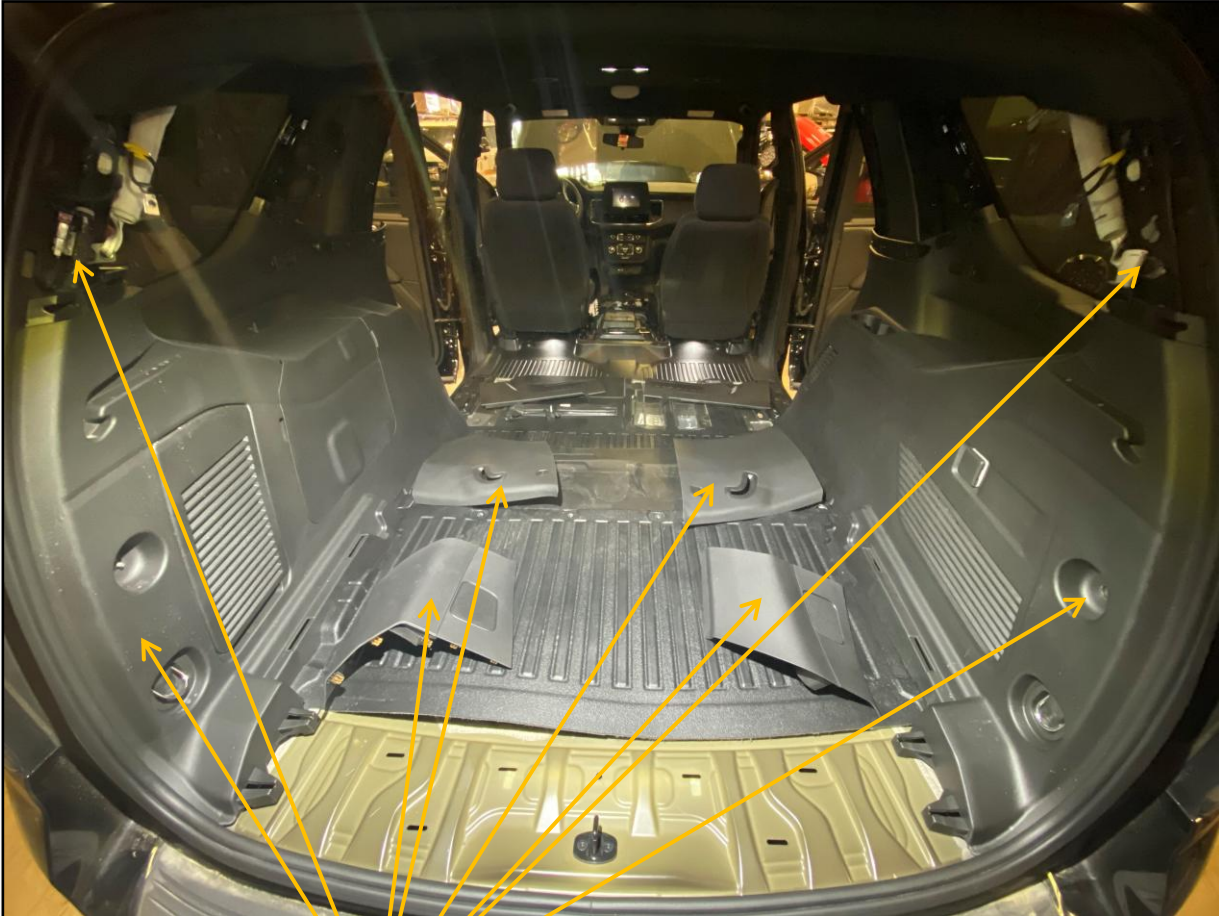
INSTALL INSTRUCTIONS



REMOVE LOWER TRIM IN
REAR OF VEHICLE



EMERGENCY EQUIPMENT



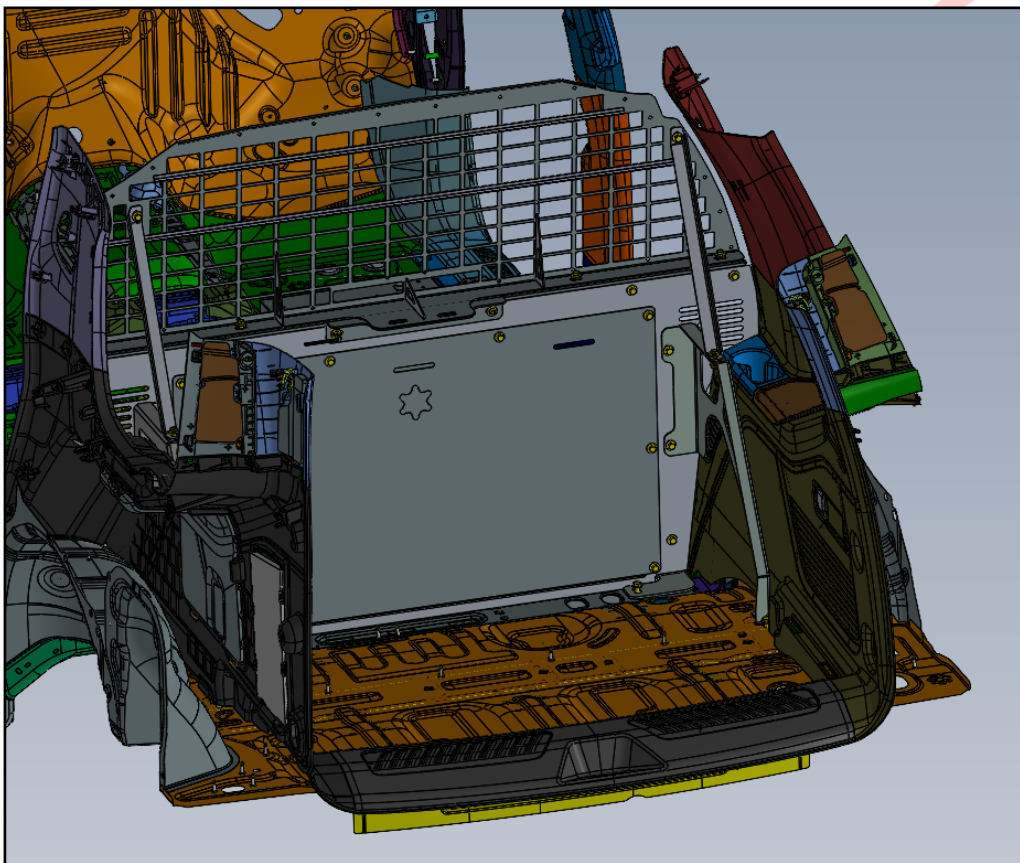
REMOVE C & D PILLAR TRIM FROM VEHICLE

REMOVE REAR CARGO TRIM FROM VEHICLE



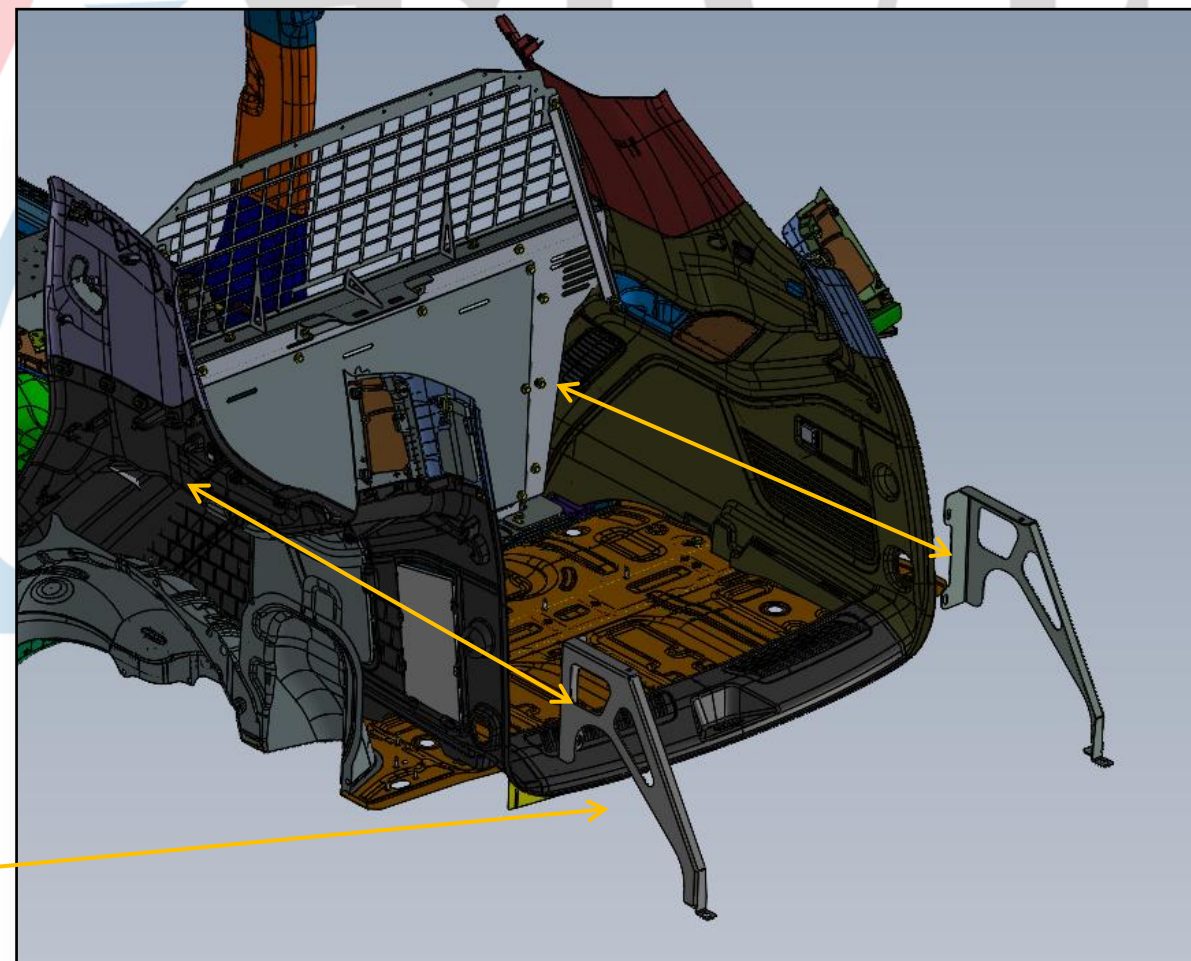
REMOVE REAR FLOOR MAT

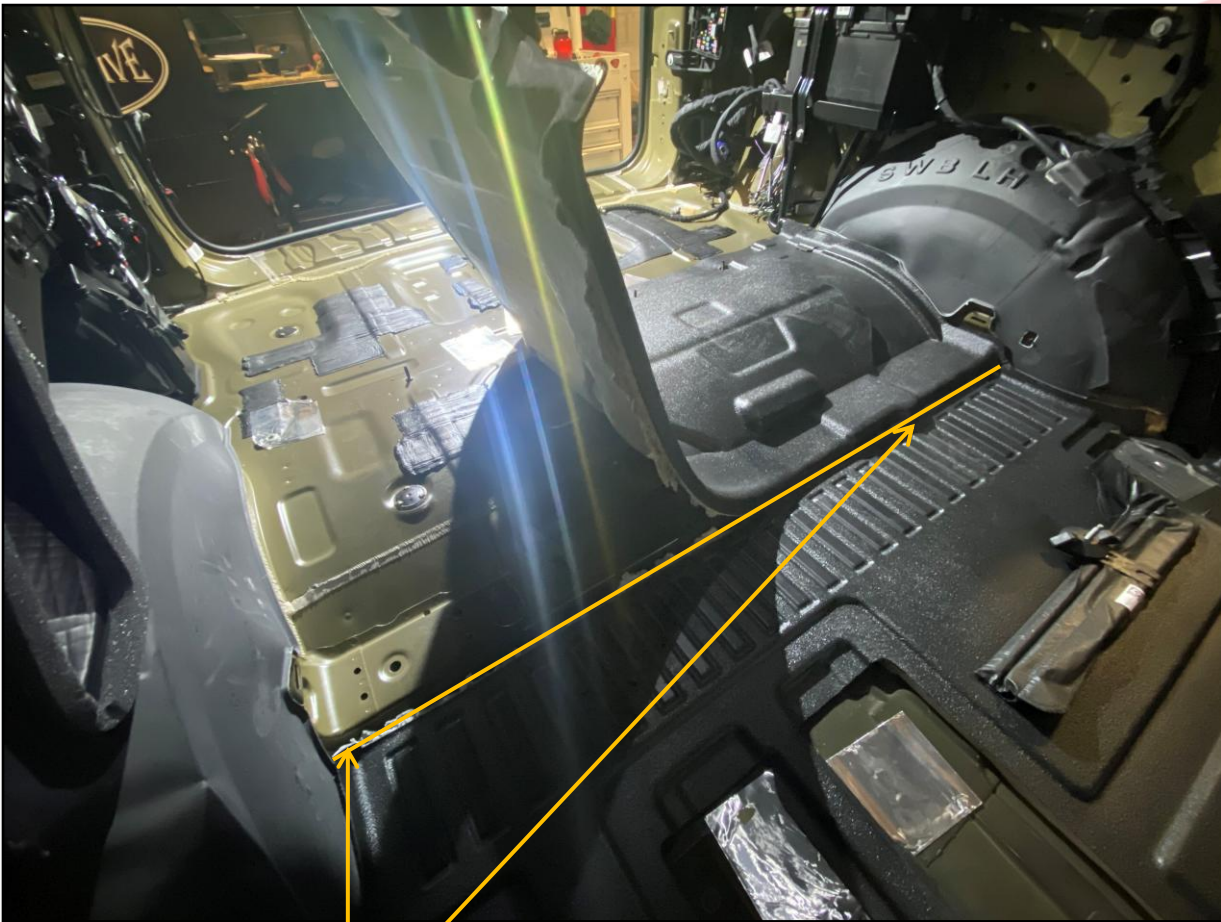
UTILITZE THIS TIME TO RUN ANY LIGHTING /
CABLES, AS ONCE THE FLOOR IS IN THE TRIM WILL
NO LONGER BE REMOVABLE WITHOUT REMOVAL.



INSTALL WESTIN CAGE IN VEHICLE PER WESTIN
INSTALL MANUAL.

REMOVE REAR CAGE LEGS AS SHOWN, RETAIN
HARDWARE FOR RE-USE.





USE A UTILITY KNIFE TO CUT ALONG
THE FLOOR MAT ON THE 3RD ROW
SEAT RAIL. REMOVE TRIMMED PIECE.



SHORT FOOT

LONG FOOT

USING HARDWARE PROVIDED,
INSTALL TWO FRONT MOUNTING
FEET TO VEHICLE.



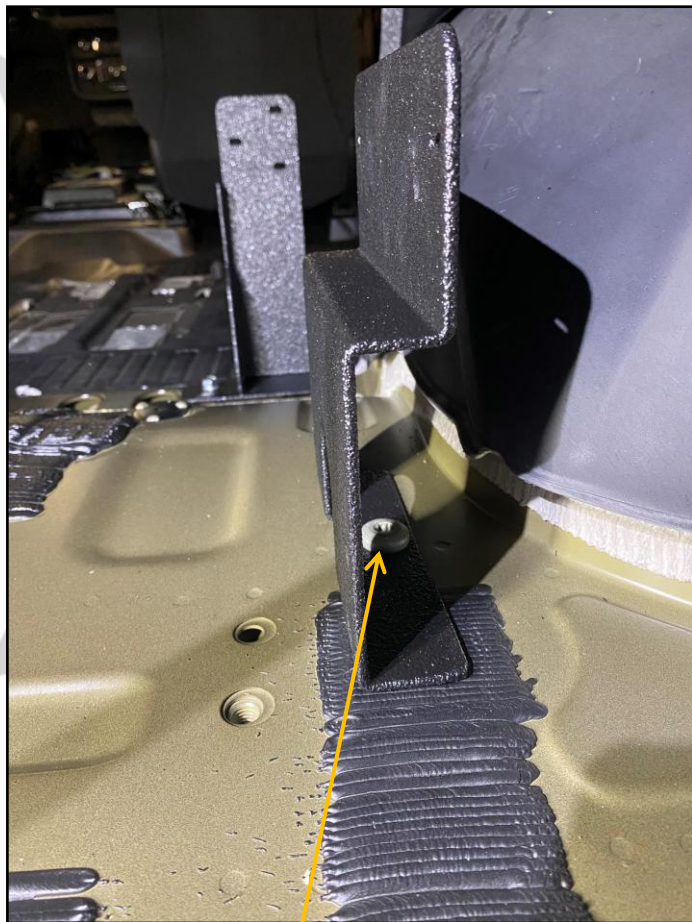
REMOVE
FACTORY BOLTS
FROM THESE
TWO LOCATIONS



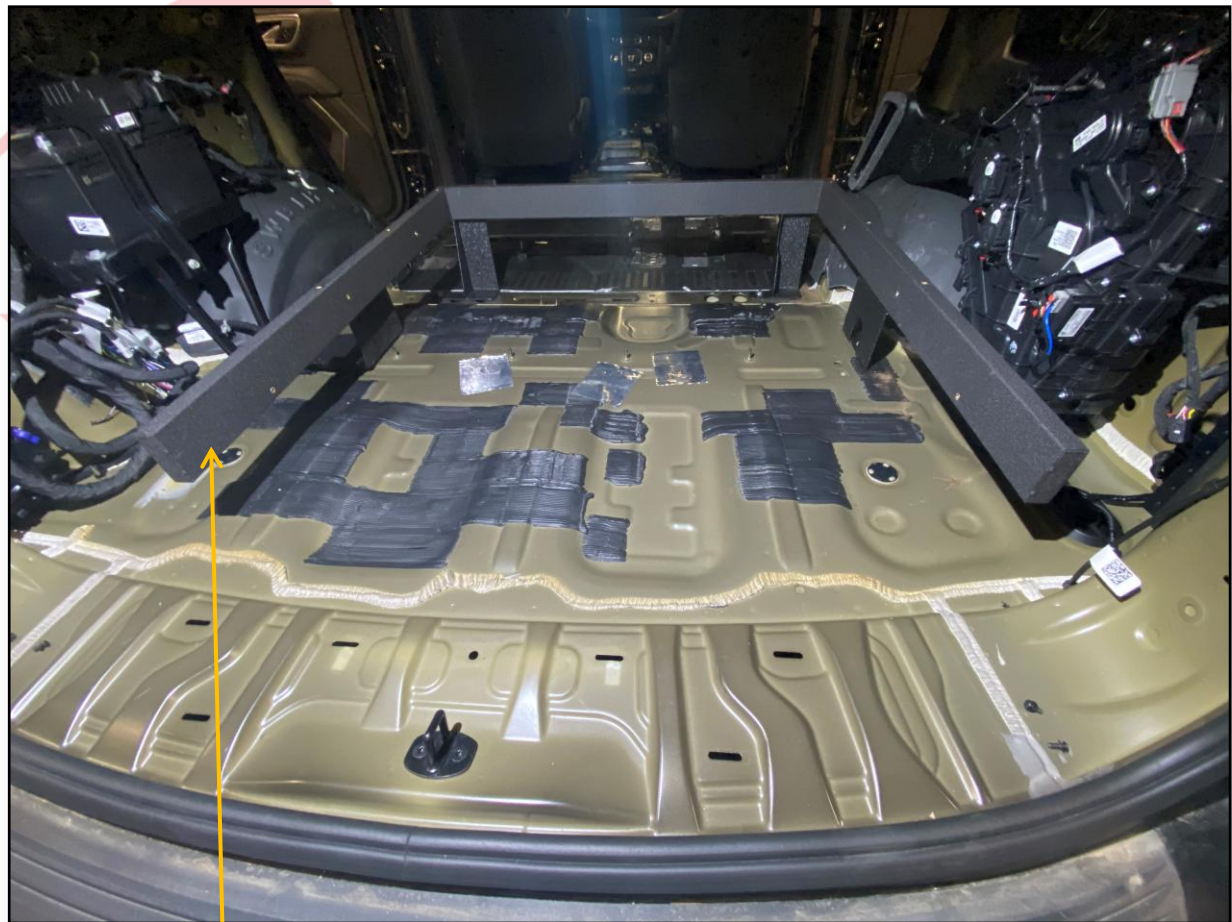
USE FACTORY HARDWARE TO
INSTALL DRIVERS SIDE REAR
FOOT



REMOVE FACTORY BOLT
FROM THIS LOCATION



INSTALL PASSENGER REAR
FOOT USING REMOVED
FACTORY BOLT

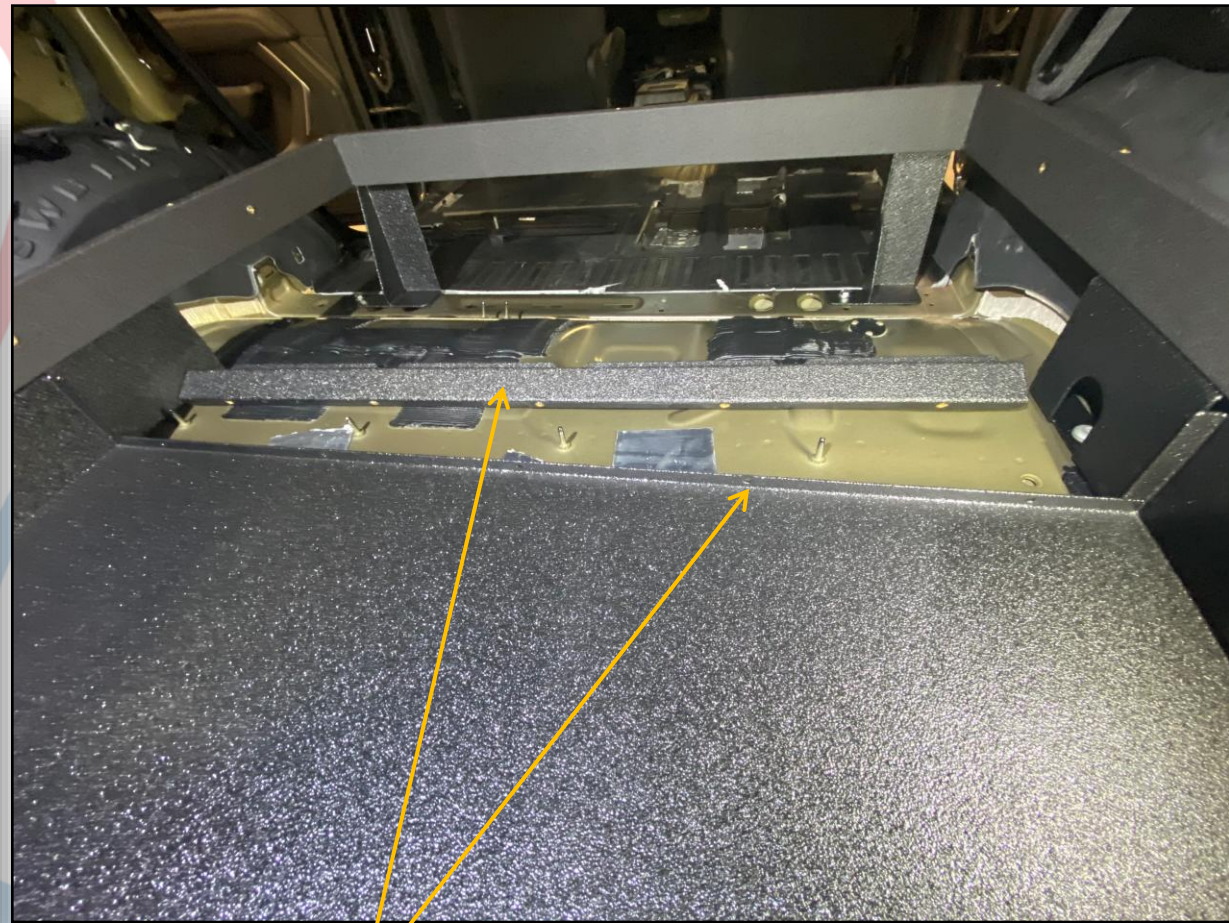


PLACE FRAME INTO VEHICLE

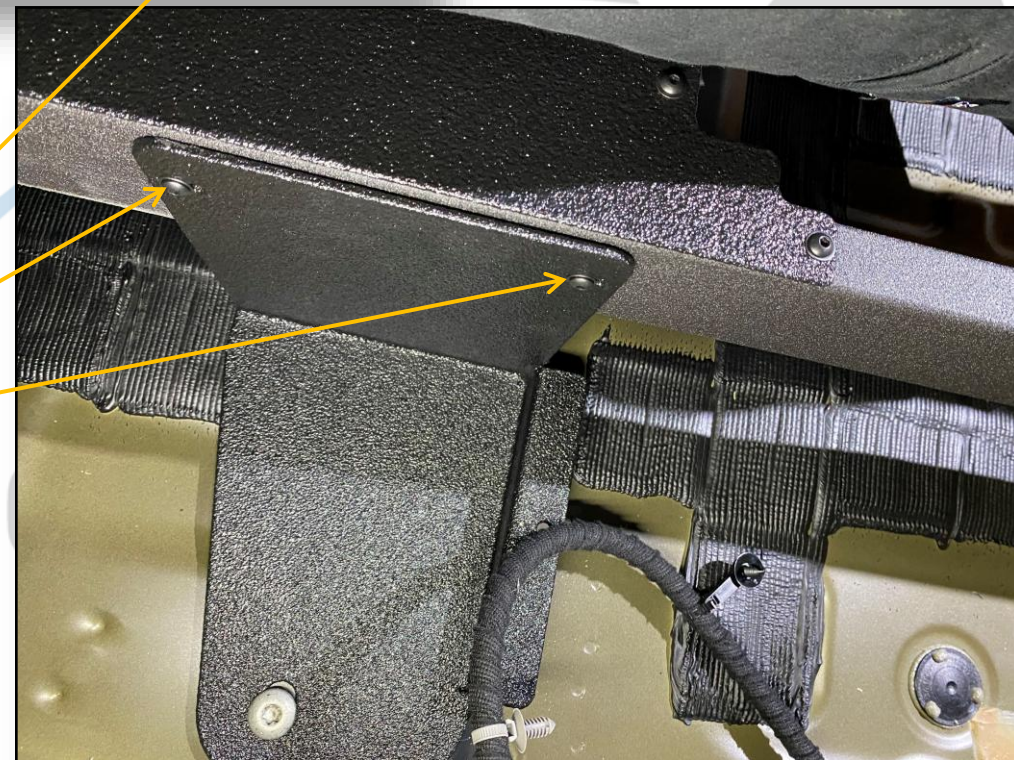
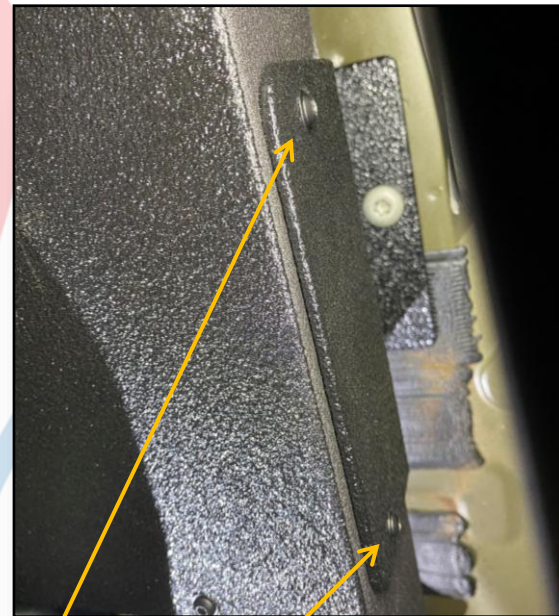
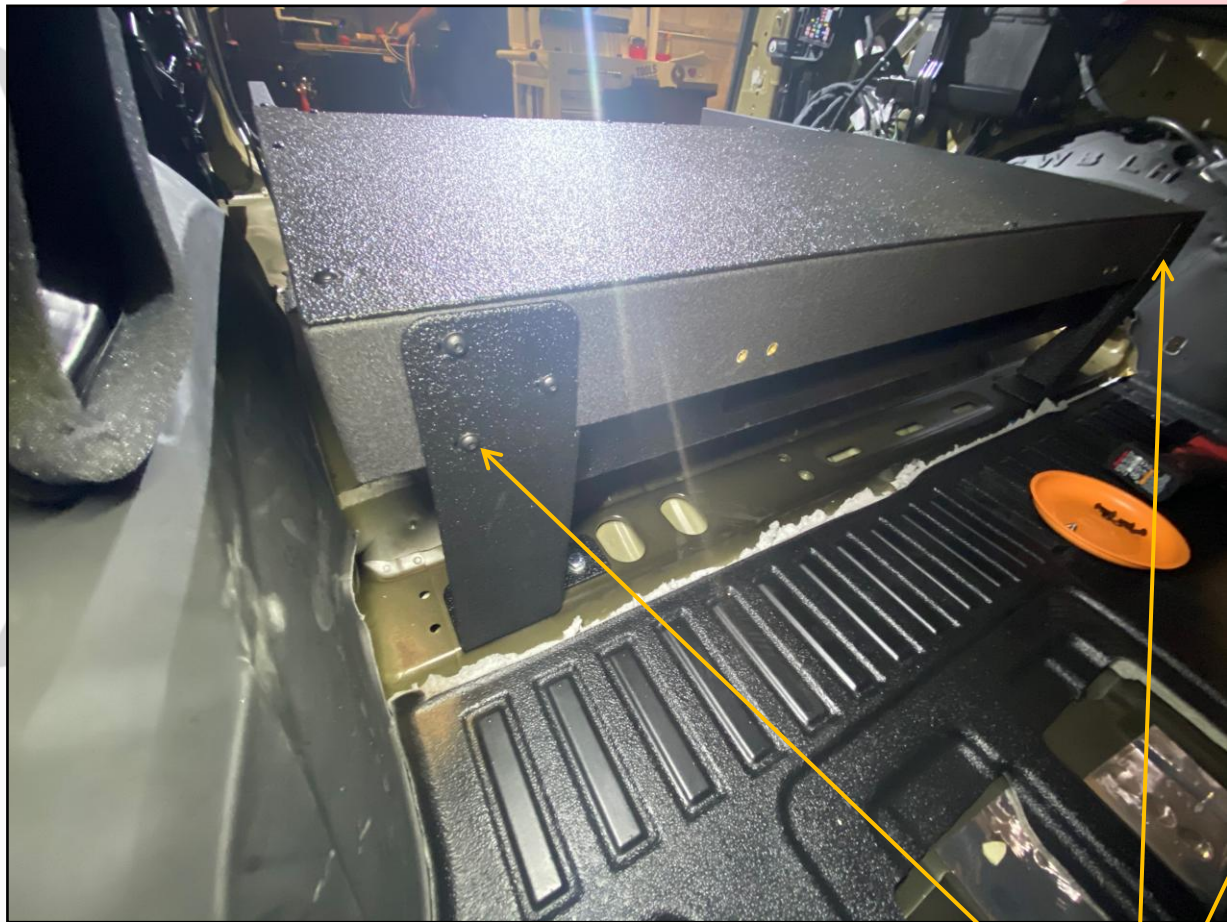


INSERT PACKAGE TRAY
UNDERNEATH FRAME

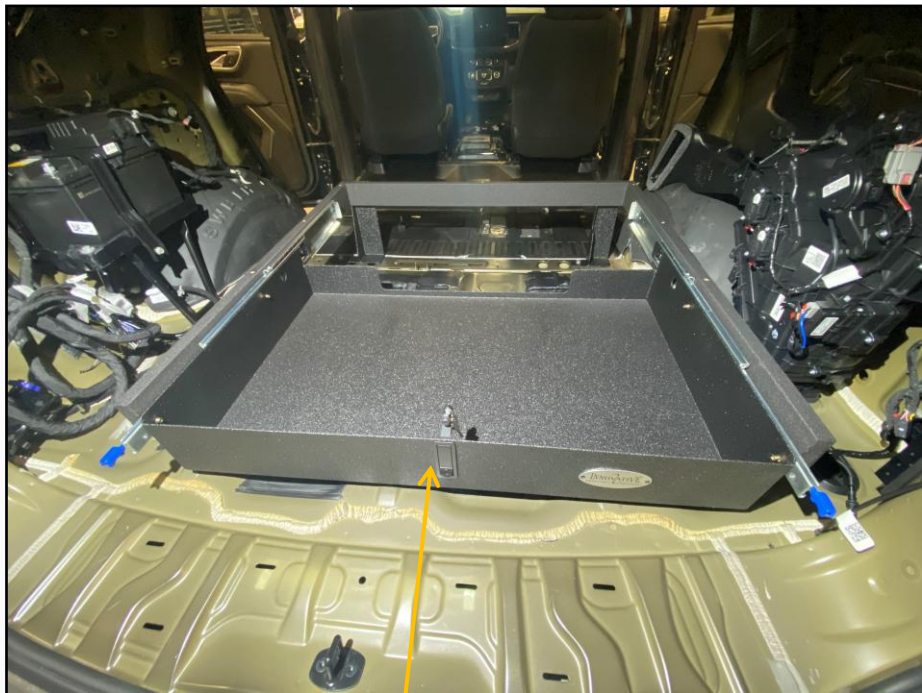
PACKAGE TRAY COMES ASSEMBLED IN
REVERSE ORIENTATION OUT OF
PACKAGE – PLEASE REVERSE BEFORE
INSTALL.



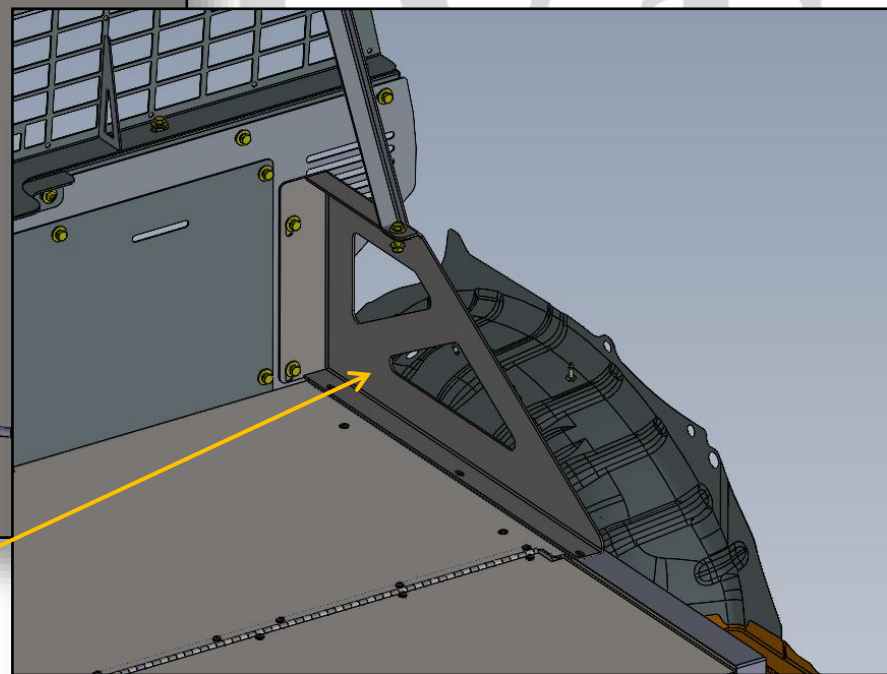
INSTALL SUPPORT BAR TO BACK OF
PACKAGE TRAY – BAR IS MADE TO
COVER FACTORY STUDS.



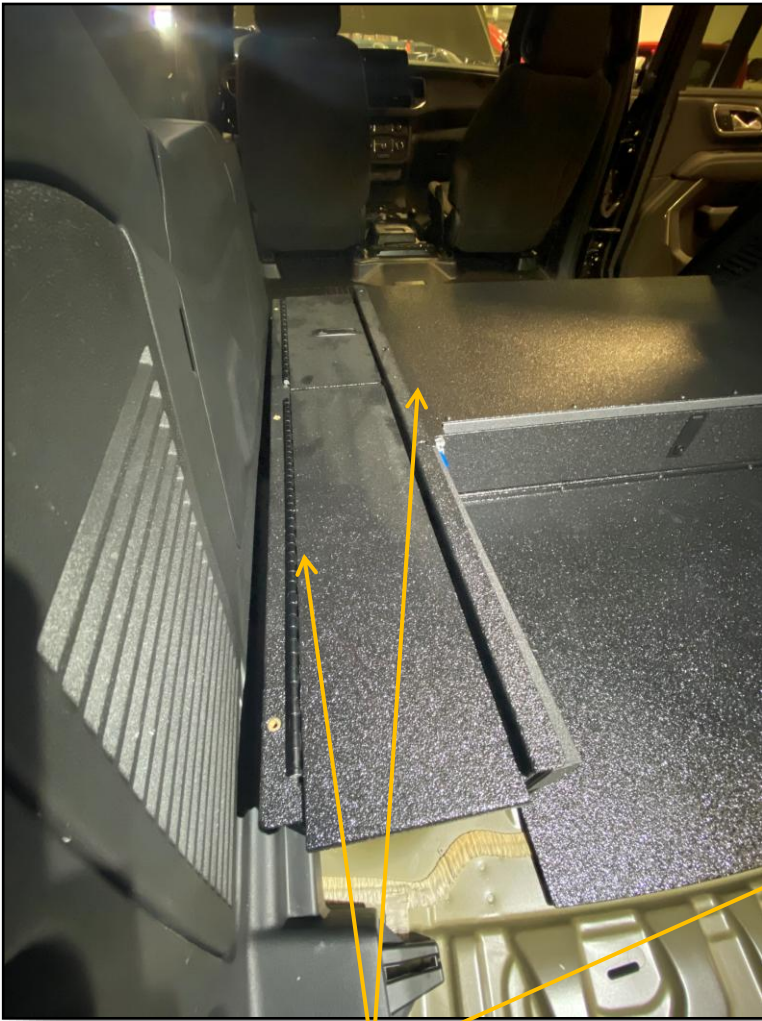
INSTALL SUPPLIED 10-32
BHCS INTO ALL MOUNTING
BRACKETS ON FRAME



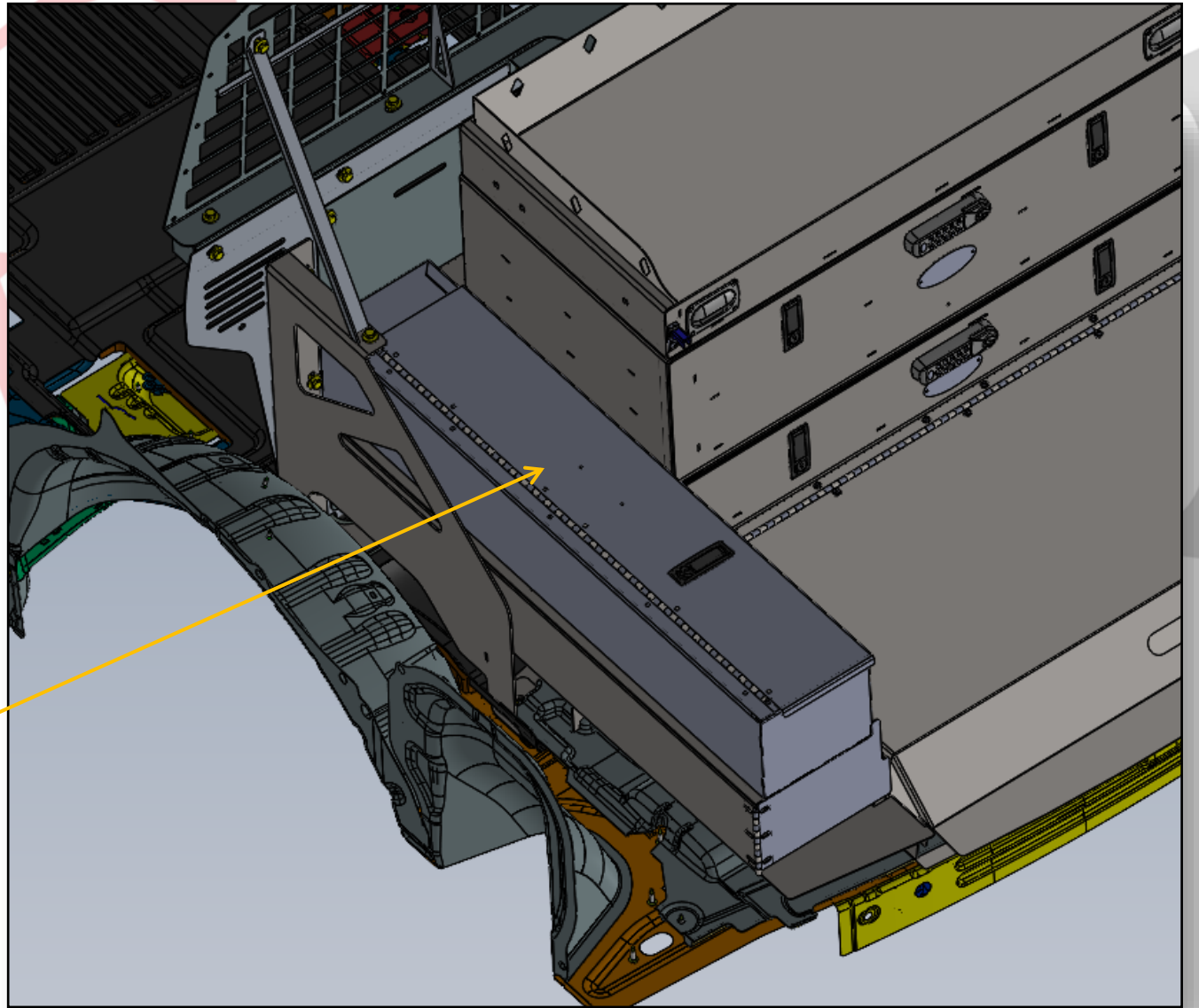
RE-INSTALL ELECTRONICS DRAWER

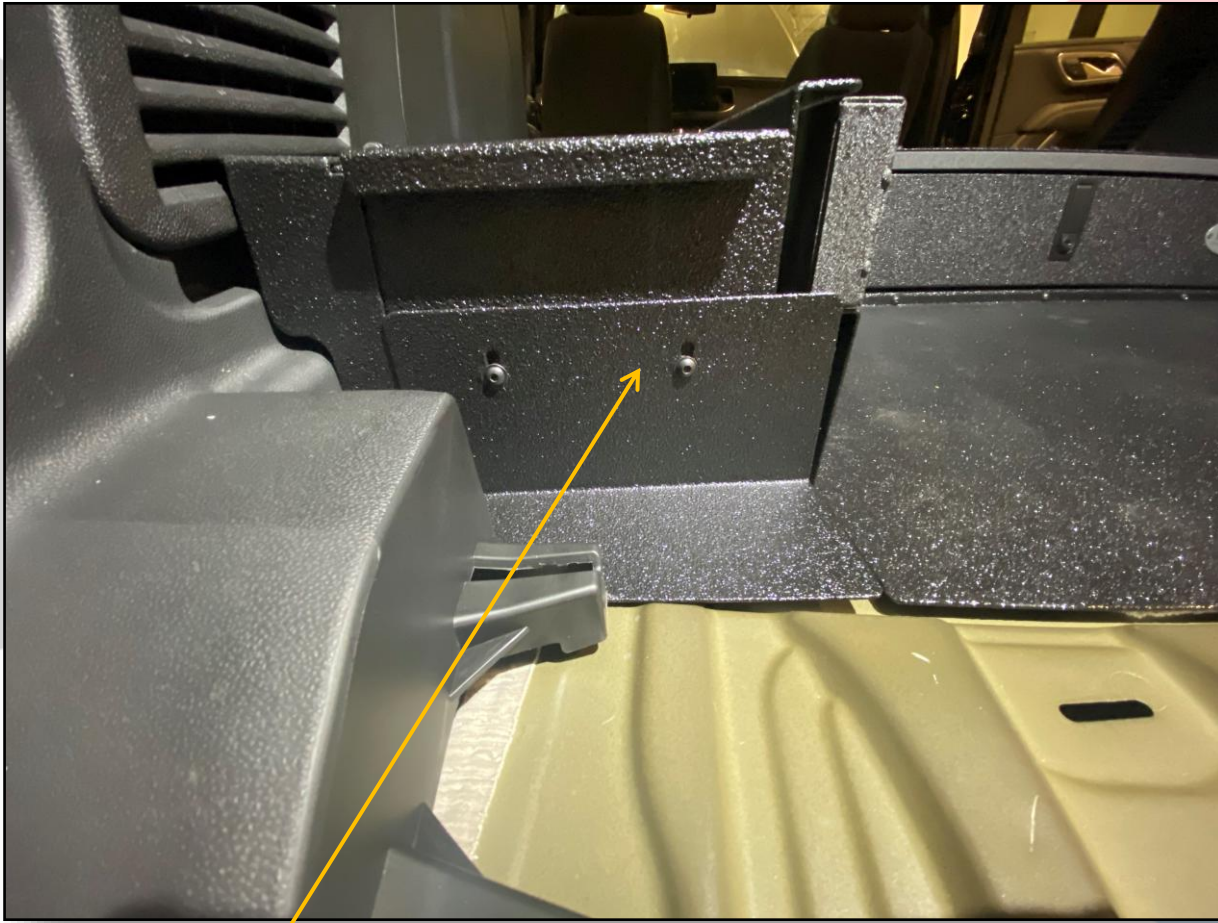


USING HARDWARE FROM WESTIN CAGE,
INSTALL REPLACEMENT WESTIN BRACKETS AS
SHOWN ONCE THE FALSE FLOOR IS IN PLACE,
AND BEFORE THE SIDE BOXES ARE INSTALLED.

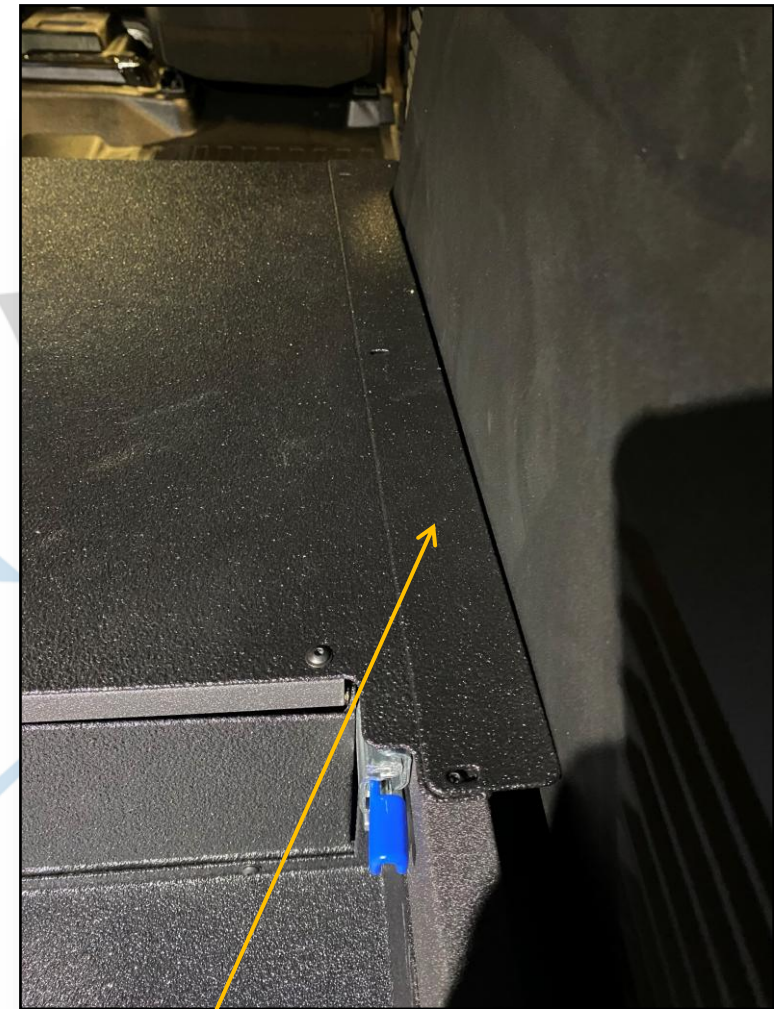


INSTALL SIDE BOXES, THEN INSTALL
LID ONTO UNIT
** SIDE BOX FLANGE WILL GO
UNDERNEATH THE LID**

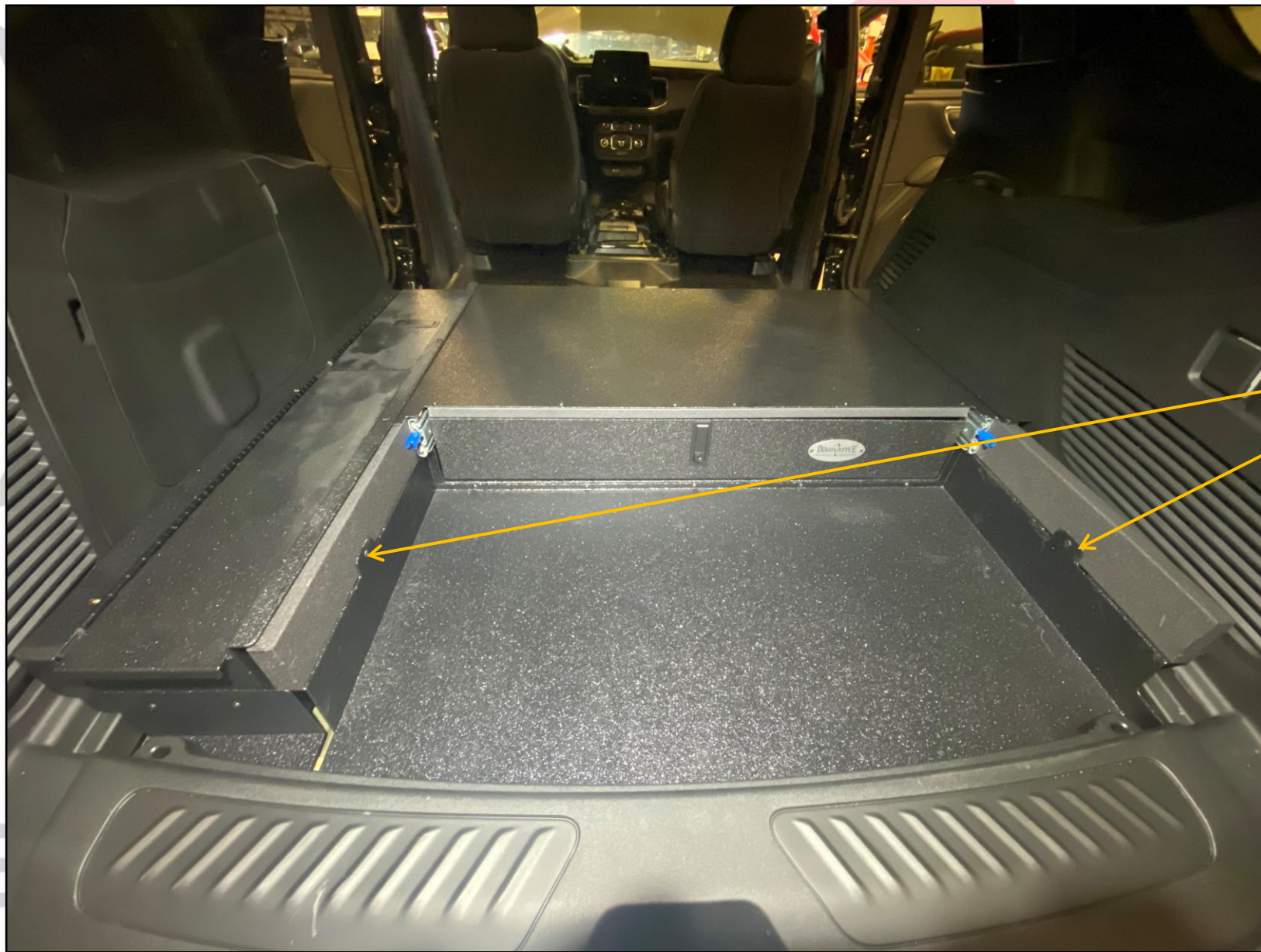




INSTALL FILLER PANEL ONTO FRONT
OF THE SIDE BOXES



INSTALL SIDE FILLER PANEL
ONTOP OF LID PANEL ON
PASSENGER SIDE



INSTALL THE TWO FLAT
HEAD SCREWS INTO THESE
EARS INTO THE FRAME
NOTE: OMIT THIS STEP IF
INSTALLING ORGANIZER

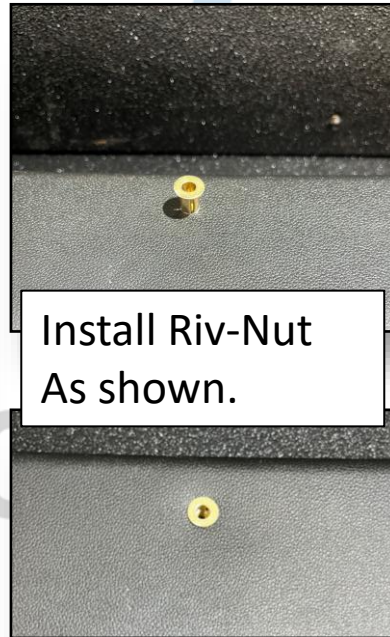
EQUIPMENT

NOTE FOR OPTIONAL PARTS!

- If your installation contains a –L/O in the part number
 - Please install this magnet provided with the hardware kit. This is to keep the lid from rattling around during motion.
- Utilizes
 - 1 10-32 Riv-Nut
 - 1 Magnet
 - 1 10-32 BHCS



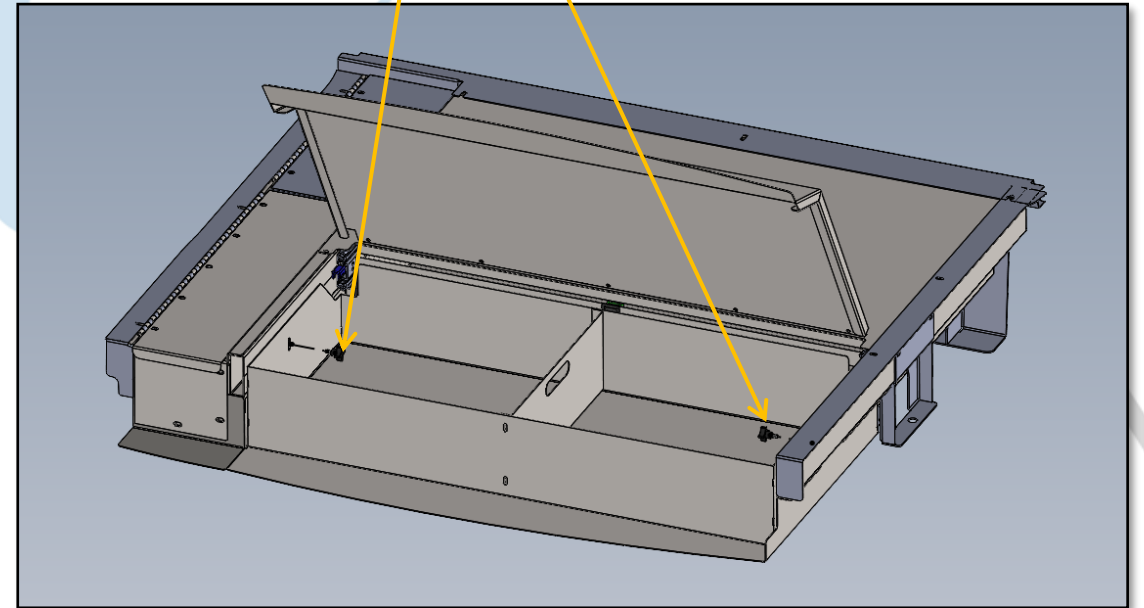
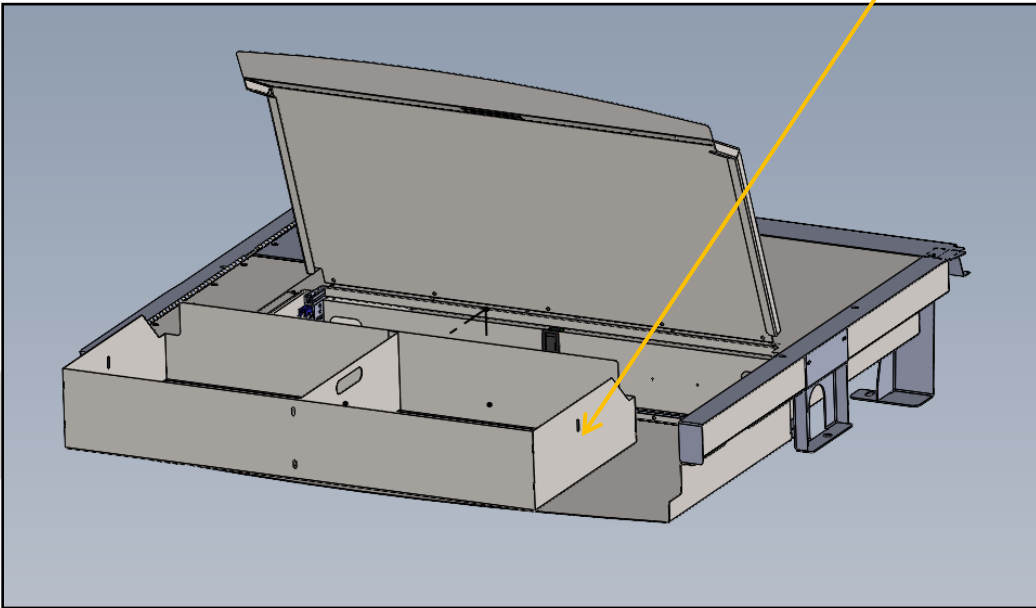
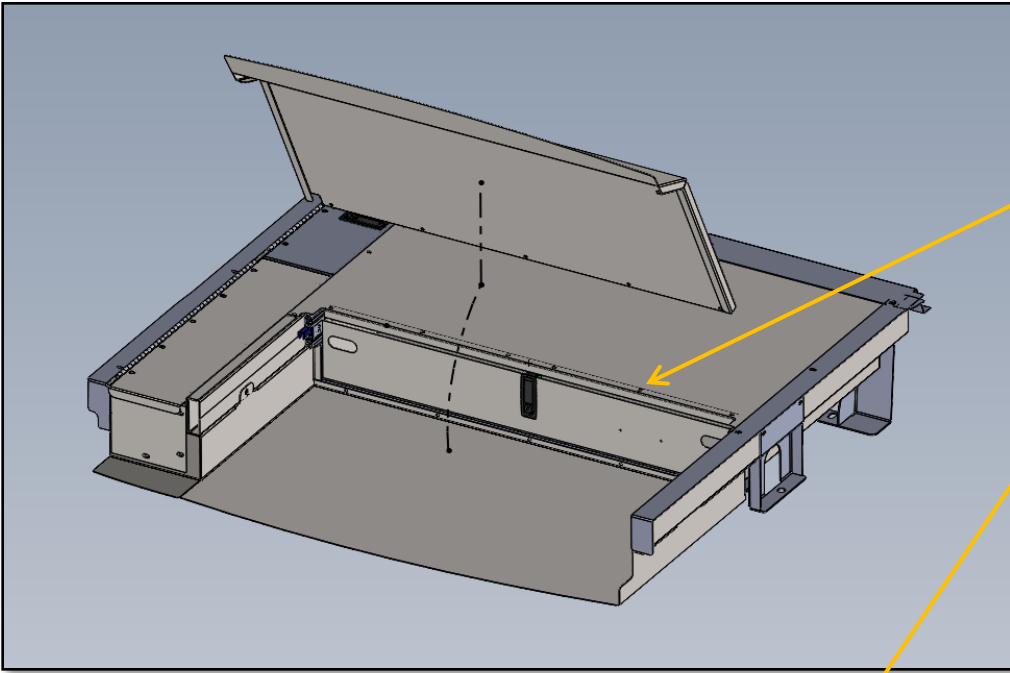
Install Riv-Nut
As shown.



INSTALL LID WITH PROVIDED HINGE AND HARDWARE

PLACE ORGANIZER IN PACKAGE TRAY AS SHOWN

SECURE ORGANIZER WITH PROVIDED THUMBSCREWS





1616 MARLBOROUGH AVE. RIVERSIDE, CA 92507

FOR TECHNICAL ASSISTANCE WITH INSTALLATION OR
OTHER QUESTIONS, PLEASE CALL (951) 222-2270

OR EMAIL SUPPORT@IDSMP.COM

Thank you for your business!