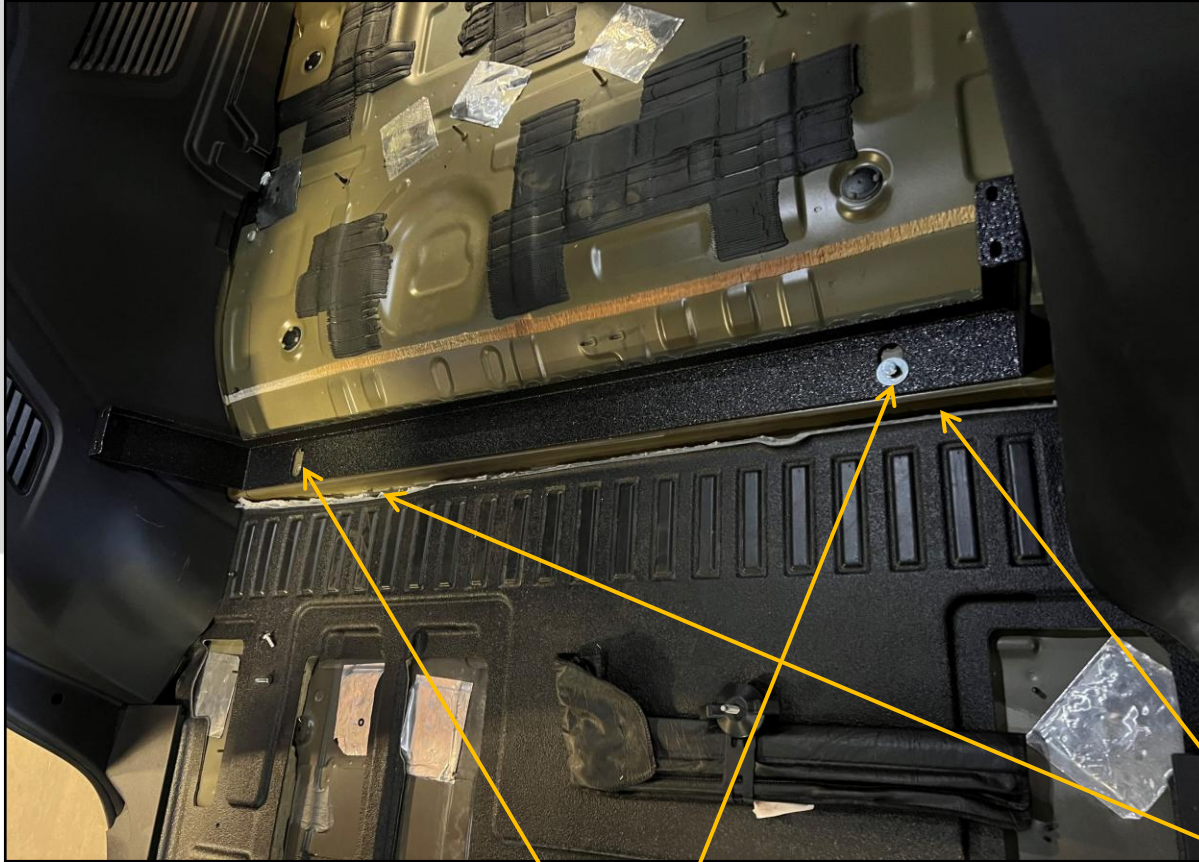


EMERGENCY EQUIPMENT

INV-ES-FF-FR-TAH25

WESTIN CAGE

INSTALL INSTRUCTIONS



#### INSTALL HARDWARE INCLUDES:

- 18x  $\frac{1}{4}$ -20 x  $\frac{3}{4}$ " BHCS
- 18x  $\frac{1}{4}$ -20 WASHERS
- 2x  $\frac{3}{8}$ " x 1" BOLTS
- 2x  $\frac{3}{8}$ " WASHERS
- 4x  $\frac{1}{4}$ -20 BULB NUTSERTS

REMOVE FACTORY RUBBER FLOOR IN REAR OF VEHICLE.

USE A UTILITY KNIFE TO CUT FLOOR RUBBER AND FOAM BACK BEHIND THE 3<sup>RD</sup> ROW SEAT MOUNT.

USING PROVIDED  $\frac{3}{8}$ " BOLTS AND WASHERS, INSTALL REAR STRAP INTO CAR, BEND IN STRAP WILL BE TOWARDS REAR OF CAR. DO NOT TIGHTEN AT THIS POINT.



FLOOR ASSEMBLY WILL COME PRE-ASSEMBLED. INSERT FLOOR ASSEMBLY INTO VEHICLE, REAR LOWER TRIM CAN BE REMOVED FOR EASE OF INSTALL.

FLOOR WILL REST ON FRONT MOUNT, DO NOT ADD SCREWS YET.

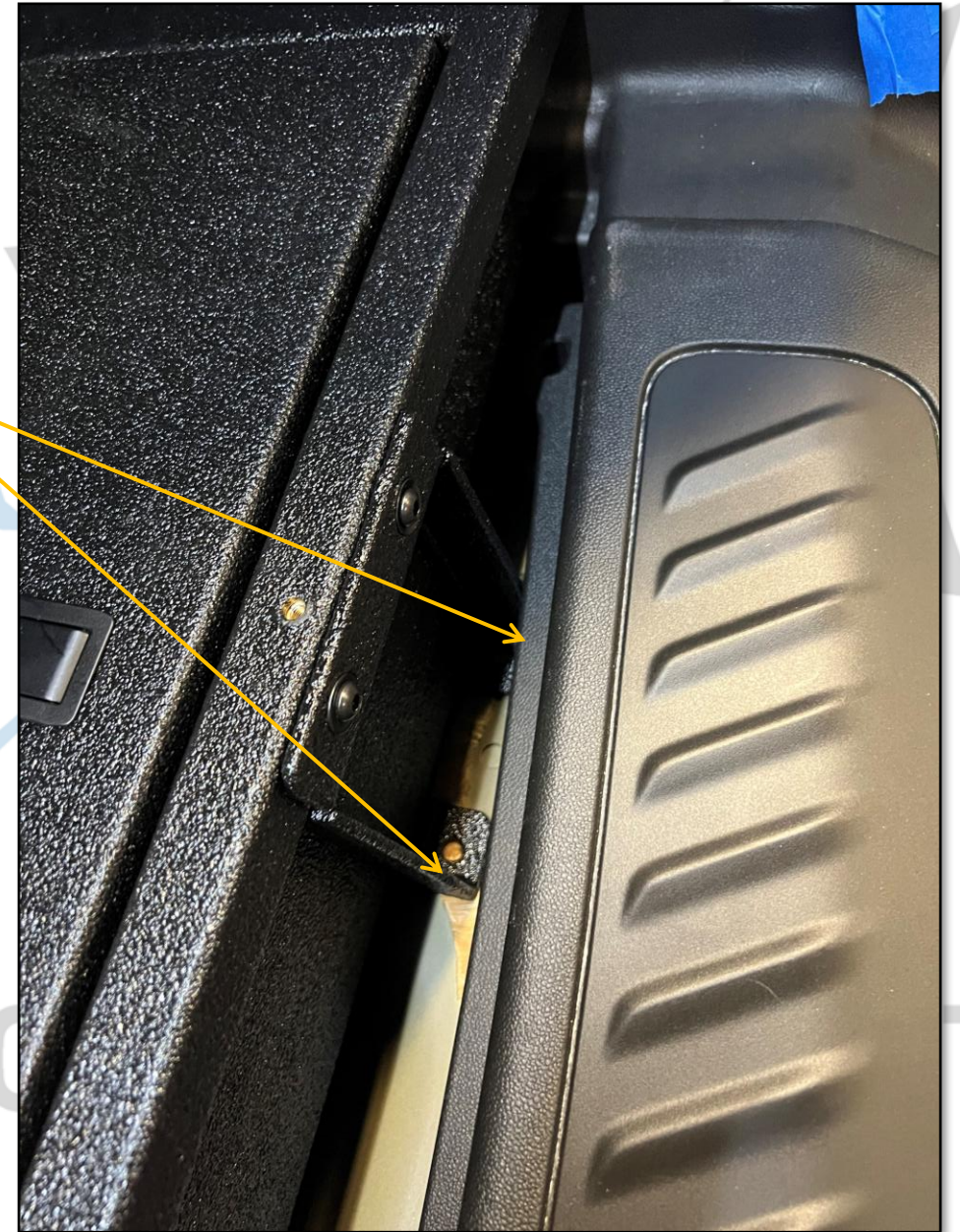
WITH LOWER TRIM INSTALLED SLIDE FLOOR TOWARDS REAR UNTIL MOUNTS ARE ABOUT 1/8" FROM PLASTICS.





PENCIL A MARK WHERE THE HOLES ON THE MOUNTS MEET THE FLOOR OF THE VEHICLE. YOU WILL BE DRILLING OUT FOR A NUTSERT USING A 7/16" DRILL BIT.

IT IS RECOMMENDED TO USE A UTILITY KNIFE TO REMOVE THE EXCESS RUBBER WHERE THE MOUNTS ARE LOCATED, TO ENSURE THE FLOOR SITS FLAT.





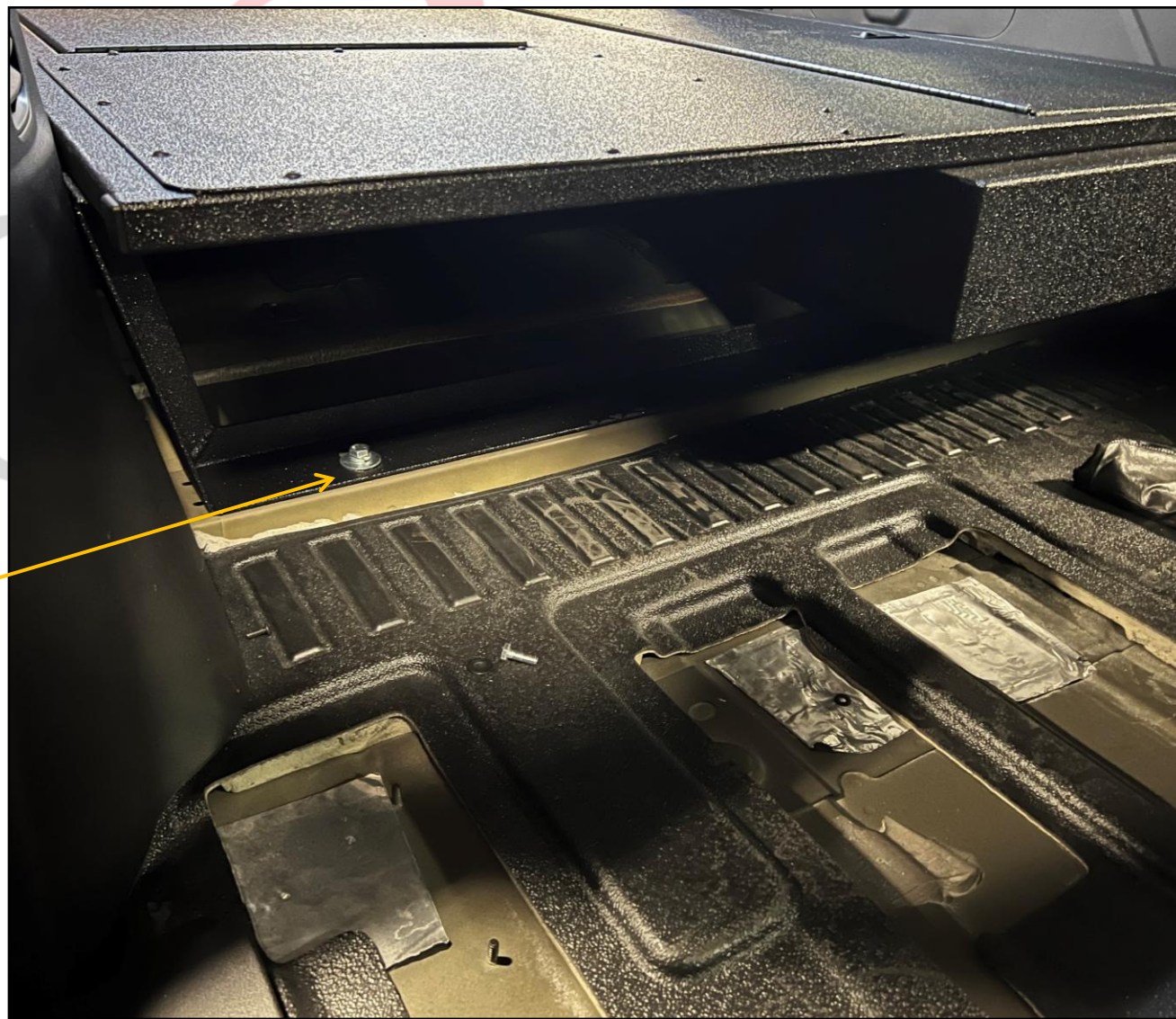
SLIDE FLOOR TOWARD FRONT ON MOUNTS, REMOVE THE RUBBER FROM THE VEHICLE FLOOR, AND DRILL AND INSTALL NUTSERTS INTO VEHICLE FLOOR. REMOVAL OF REAR LOWER TRIM WILL MAKE THIS EASIER.

MOVE FLOOR BACK INTO PLACE, INSTALL PROVIDED  $\frac{1}{4}$ -20 SCREWS INTO NUTSERTS.





INNOVATIVE  
EMERGENCY  
TIGHTEN MOUNT TO  
FLOOR OF VEHICLE.

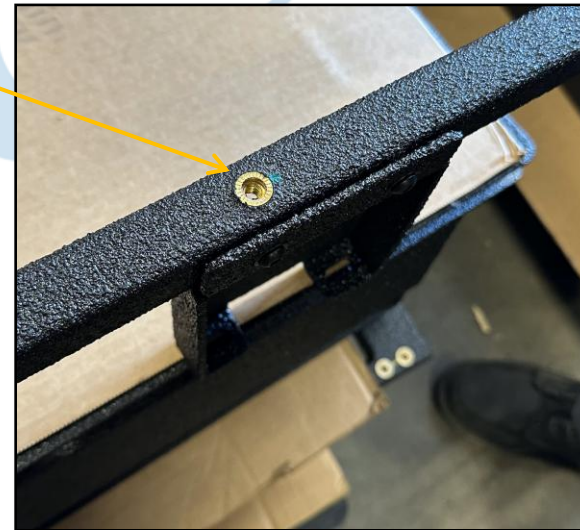
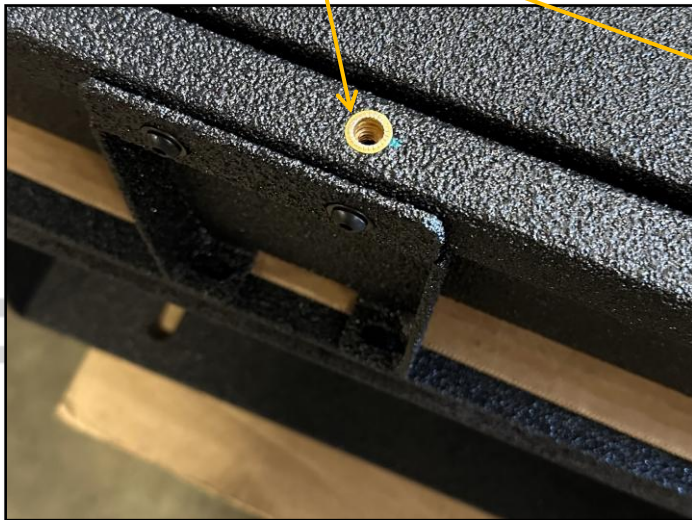
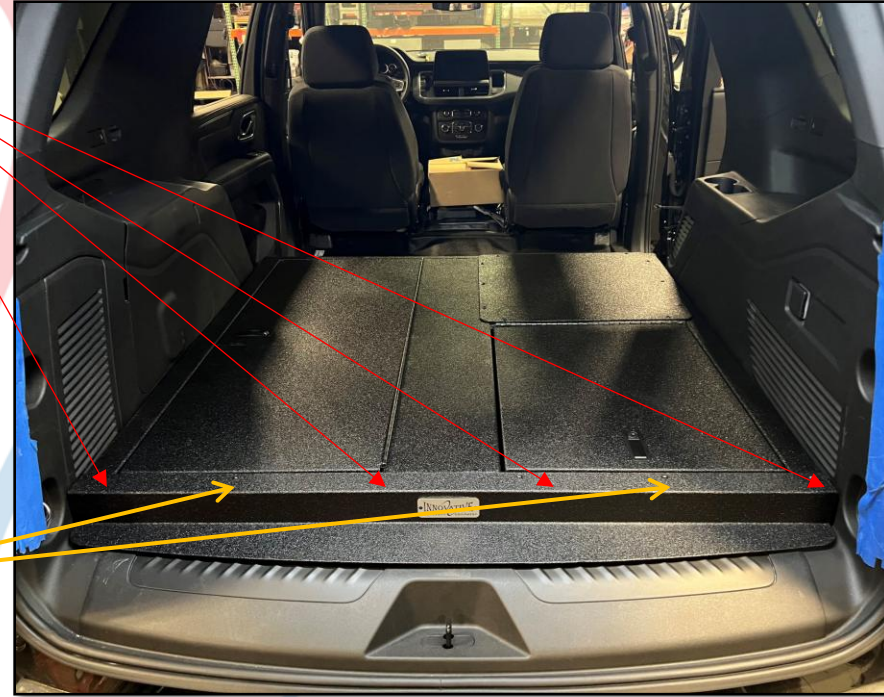


RE- INSTALL REAR HATCH TRIM, IF NEEDED.

INSTALL FILLER PANEL USING ¼-20 SCREWS.

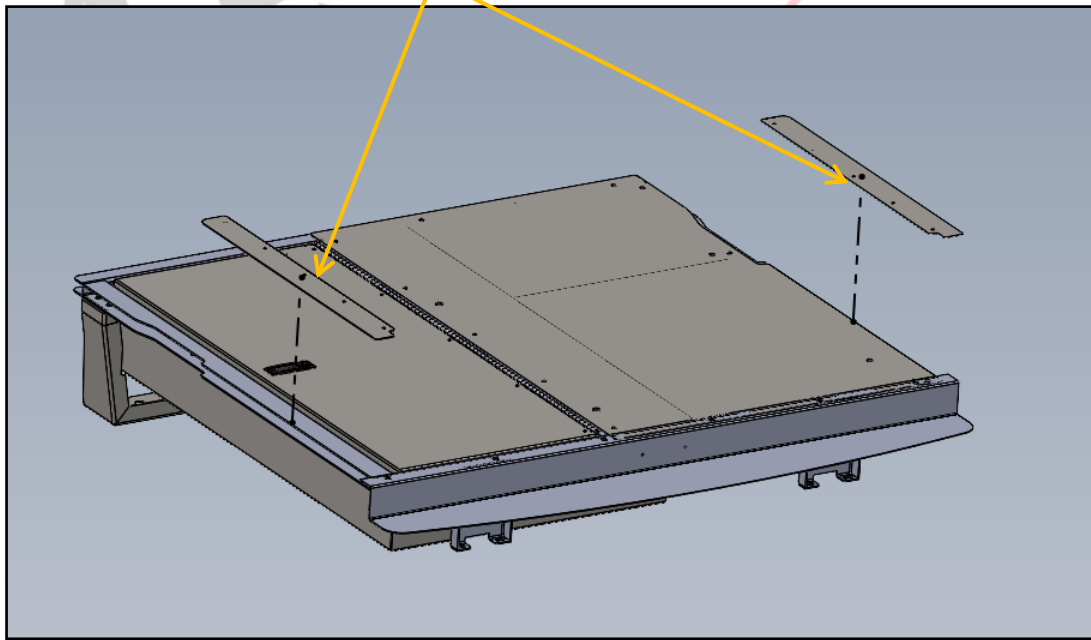
**NOTE:**

WHEN INSTALLING THE TOP PANEL AND REAR TRIM PANEL,  
USE SHORT ¼-20 SCREWS (PROVIDED) FOR HOLES NEAR  
MOUNTING FEET AT LOCATIONS SHOWN





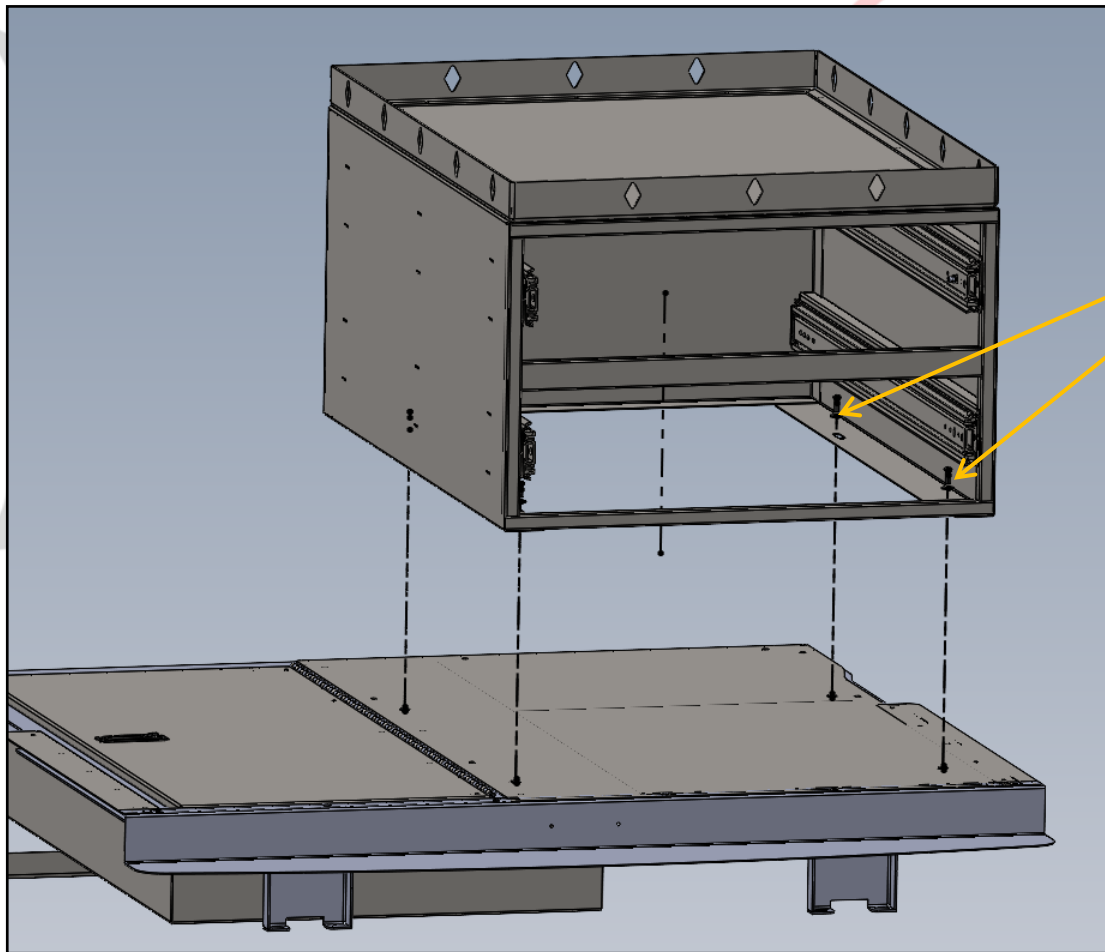
ATTACH SIDE FILLER PANELS WITH SUPPLIED  
SELF-TAPPING SCREWS



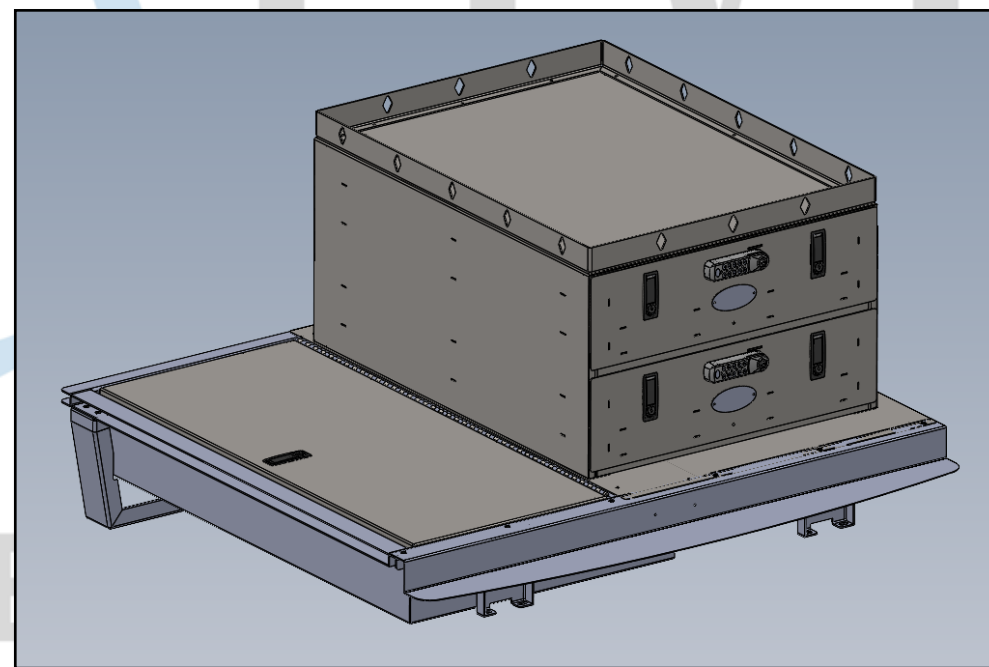
PLEASE NOTE LOCATION OF FLAT-HEAD  
SCREWS, THESE WILL NEED TO BE INSTALLED  
IN LOCATIONS SHOWN TO CLEAR DRAWER  
INSTALLATION







MOUNT DUAL DRAWER UNIT TO  
PRE-INSTALLED NUTSERTS USING  
SUPPLIED  $\frac{1}{4}$ -20 HARDWARE





1616 MARLBOROUGH AVE. RIVERSIDE, CA 92507

FOR TECHNICAL ASSISTANCE WITH INSTALLATION OR  
OTHER QUESTIONS, PLEASE CALL (951) 222-2270

OR EMAIL [SUPPORT@IDSMP.COM](mailto:SUPPORT@IDSMP.COM)

*Thank you for your business!*