

INV-ES-FF-FR-TAH21 INSTALL INSTRUCTIONS

2022 Tahoe

Mounts




REMOVE FACTORY RUBBER FLOOR IN REAR OF VEHICLE.

USE A UTILITY KNIFE TO CUT FLOOR RUBBER AND FOAM BACK BEHIND THE 3RD ROW SEAT MOUNT.

USING PROVIDED 3/8" BOLTS AND WASHERS, INSTALL REAR STRAP INTO CAR, BEND IN STRAP WILL BE TOWARDS REAR OF CAR. DO NOT TIGHTEN AT THIS POINT.

EQUIPMENT




FLOOR ASSEMBLY WILL COME PRE-ASSEMBLED. INSERT FLOOR ASSEMBLY INTO VEHICLE, REAR LOWER TRIM CAN BE REMOVED FOR EASE OF INSTALL.

FLOOR WILL REST ON FRONT MOUNT, DO NOT ADD SCREWS YET.


WITH LOWER TRIM INSTALLED SLIDE FLOOR TOWARDS REAR UNTIL MOUNTS ARE ABOUT 1/8" FROM PLASTICS.

P M E N T




PENCIL A MARK WHERE THE HOLES ON THE MOUNTS MEET THE FLOOR OF THE VEHICLE. YOU WILL BE DRILLING OUT FOR A NUTSERT USING A 7/16" DRILL BIT.


IT IS RECOMMENDED TO USE A UTILITY KNIFE TO REMOVE THE EXCESS RUBBER WHERE THE MOUNTS ARE LOCATED, TO ENSURE THE FLOOR SITS FLAT.



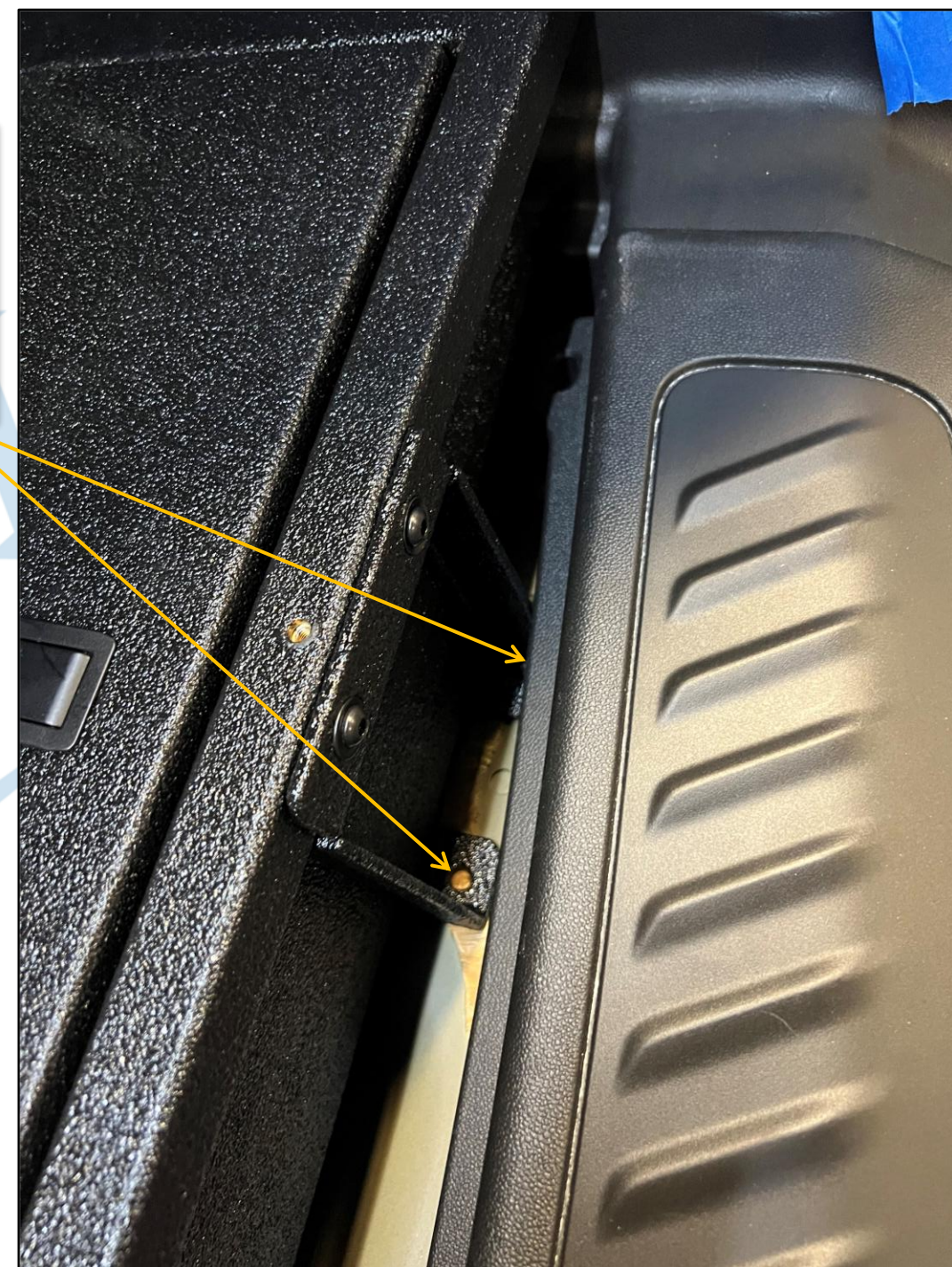
A close-up photograph showing a utility knife being used to remove excess black rubber from the floor of a vehicle. The knife is positioned at an angle, and a small piece of rubber is being lifted. The floor is made of a light-colored material, possibly wood or plastic, and the rubber is a thick, black, textured material.



IT IS RECOMMENDED TO USE A UTILITY KNIFE TO REMOVE THE EXCESS RUBBER WHERE THE MOUNTS ARE LOCATED, TO ENSURE THE FLOOR SITS FLAT.



A close-up photograph showing a utility knife being used to remove excess black rubber from the floor of a vehicle. The knife is positioned at an angle, and a small piece of rubber is being lifted. The floor is made of a light-colored material, possibly wood or plastic, and the rubber is a thick, black, textured material.



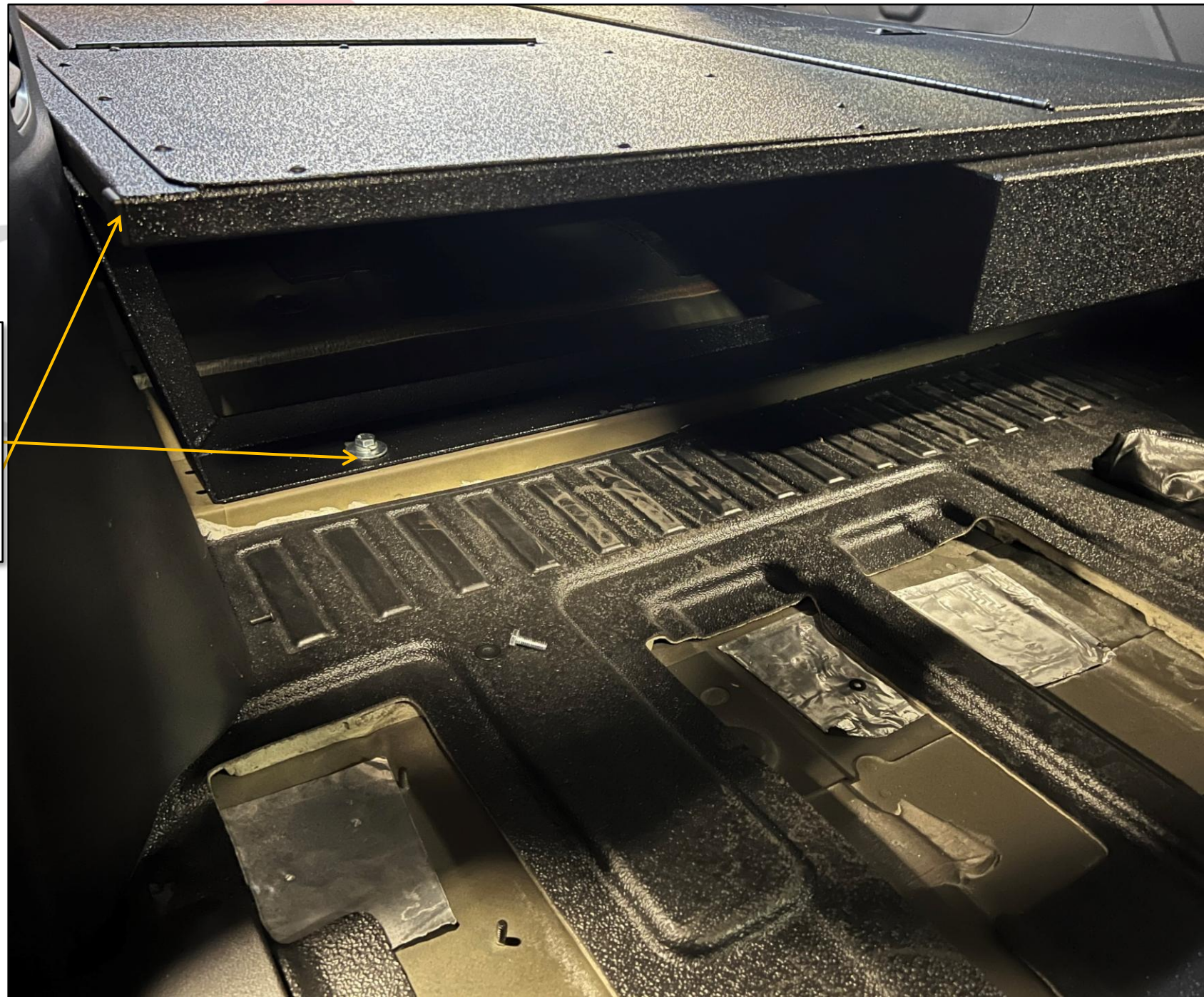
SLIDE FLOOR TOWARD FRONT ON MOUNTS, REMOVE THE RUBBER FROM THE VEHICLE FLOOR, AND DRILL AND INSTALL NUTSERTS INTO VEHICLE FLOOR. REMOVAL OF REAR LOWER TRIM WILL MAKE THIS EASIER.

MOVE FLOOR BACK INTO PLACE, INSTALL PROVIDED $\frac{1}{4}$ -20 SCREWS INTO NUTSERTS.



INSTALL PROVIDED 10/32 SCREWS INTO SLOT
LOCATIONS ON MOUNT INTO FLOOR. THERE
WILL BE A TOTAL OF 4 SCREWS, 2 PER SIDE.
TIGHTEN SCREWS TO FLOOR.

TIGHTEN MOUNT TO FLOOR OF VEHICLE.



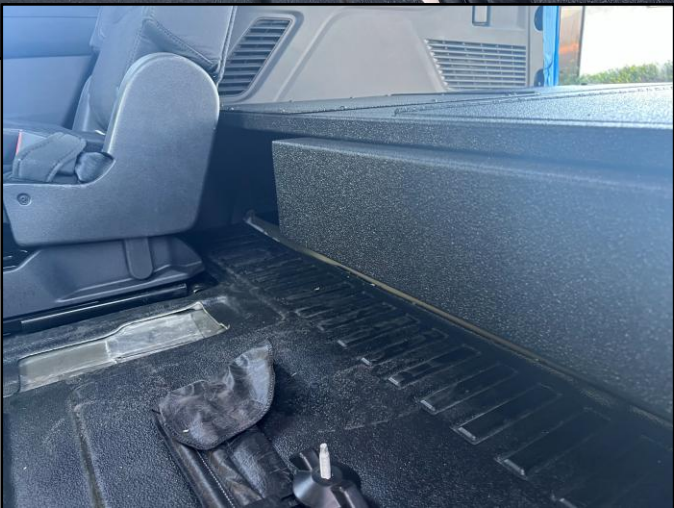
EMERGE

RE- INSTALL REAR HATCH TRIM, IF NEEDED.

INSTALL FILLER PANEL USING 10-32 SCREWS.







EN



UIPMENT



1616 MARLBOROUGH AVE. RIVERSIDE, CA 92507

FOR TECHNICAL ASSISTANCE WITH INSTALLATION OR
OTHER QUESTIONS, PLEASE CALL (951) 222-2270

OR EMAIL SUPPORT@IDSMP.COM

Thank you for your business!