

EMERGENCY EQUIPMENT

PIU20 BOX MOUNT

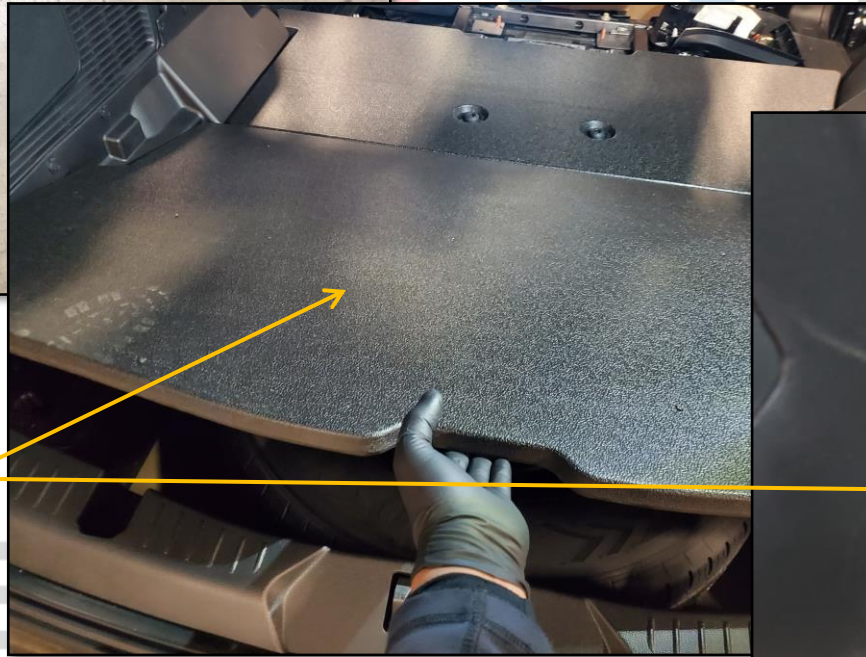
INSTALLATION INSTRUCTIONS

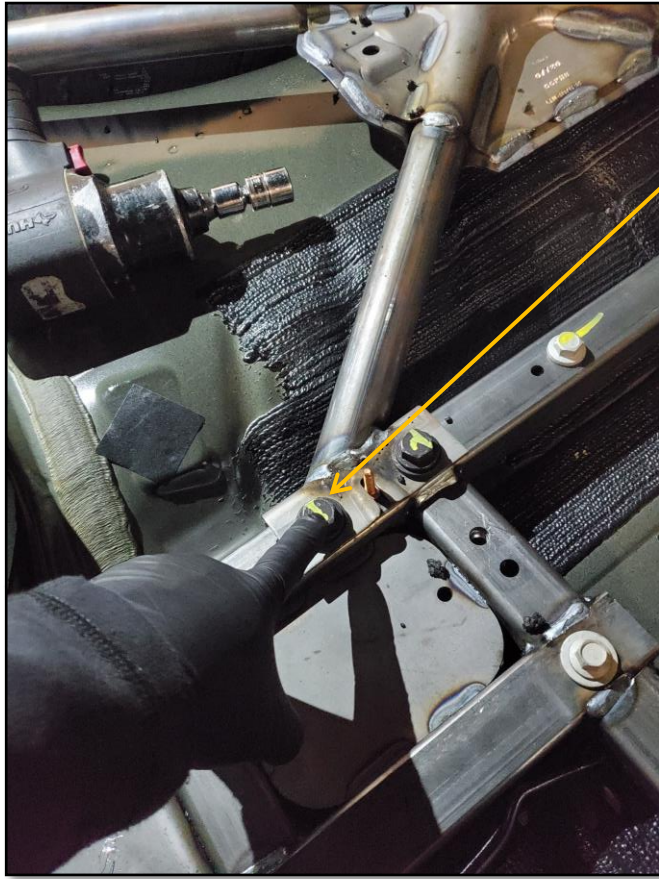


BOX MOUNT INSTALLATION KIT TO INCLUDE:

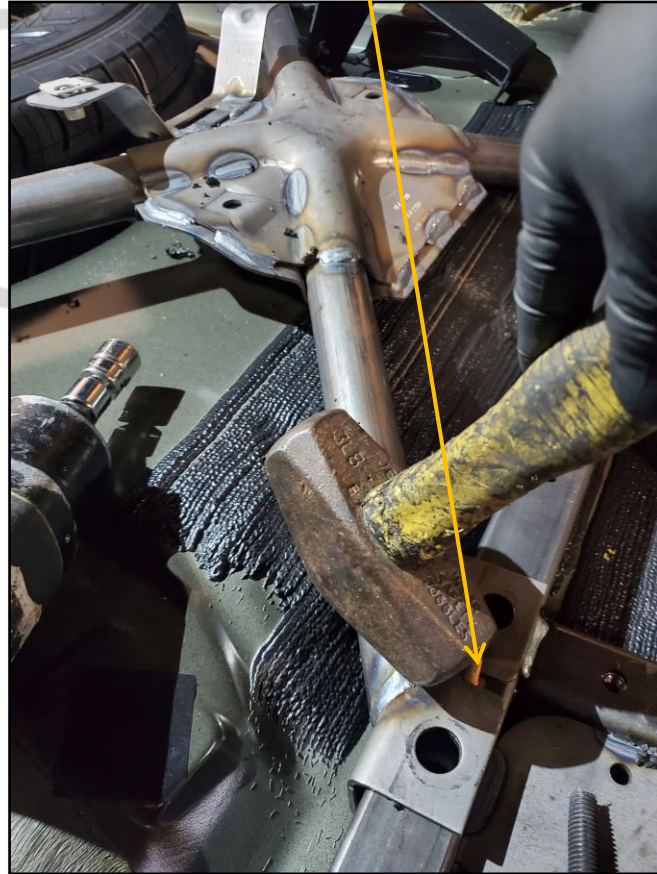
FRONT MOUNT FEET
SIDE MOUNT FEET
SIDE MOUNT BAR
MOUNTING HARDWARE

REMOVE INTERIOR FLOOR
COVERING AND FOAM
SURROUNDS





REMOVE SUBFRAME BOLTS AND RETAIN
FOR NEXT STEP.
BREAK OFF CENTER STUD AS SHOWN



USING FACTORY HARDWARE, ATTACH
FRONT FEET TO SUBFRAME AS SHOWN





LOOSEN FACTORY BOLTS ON SIDE OF
SUBFRAME, AND SLIDE SIDE MOUNTING
FOOT INTO PLACE AS SHOWN



TIGHTEN BOLTS TO SECURE SIDE FEET,
REPEAT FOR OPPOSITE SIDE



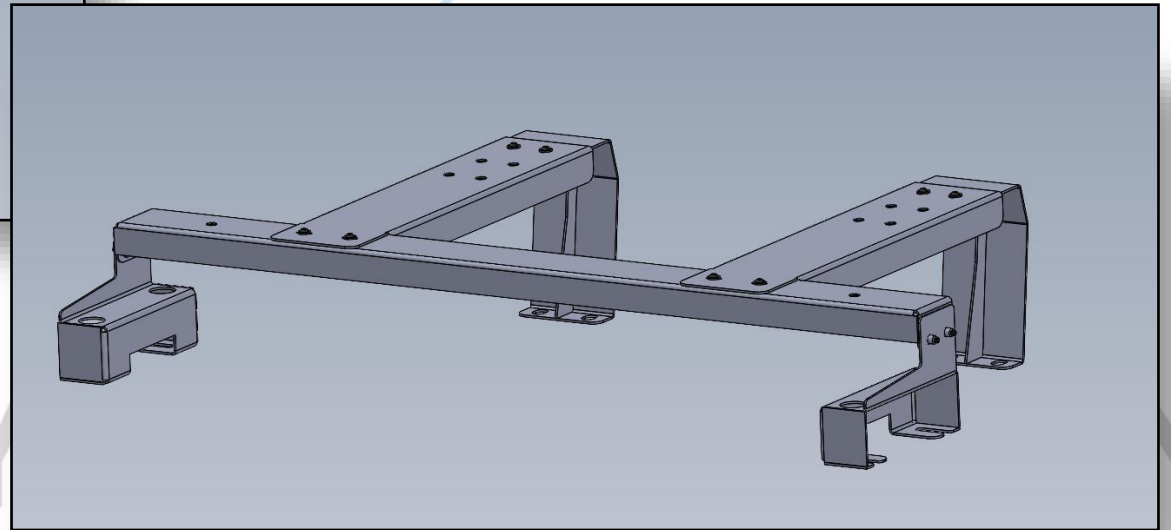
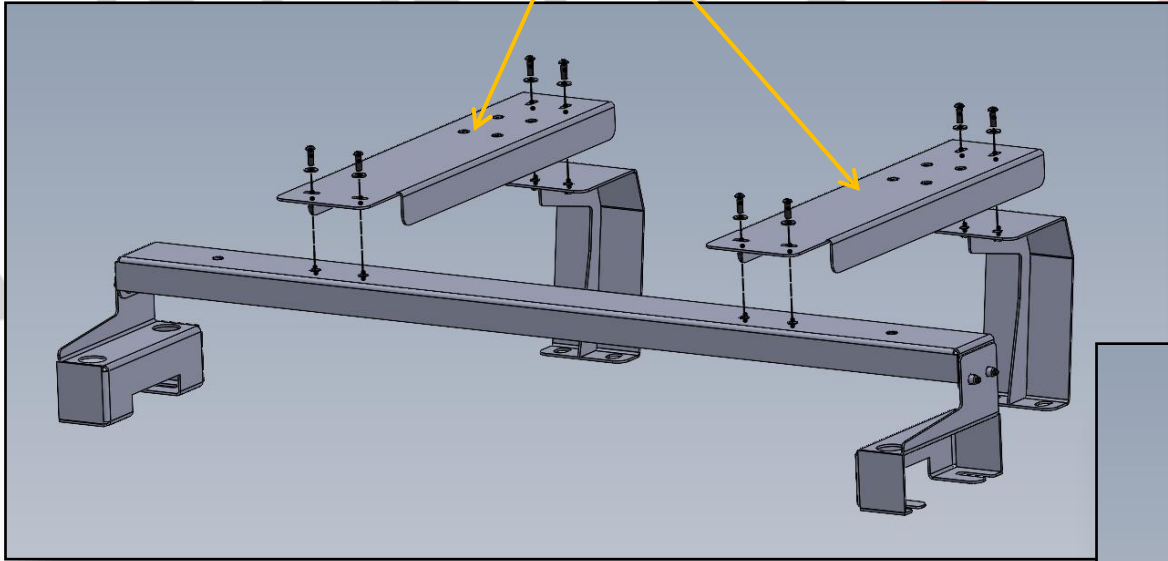
ATTACH SIDE MOUNT BAR TO
SIDE MOUNT FEET



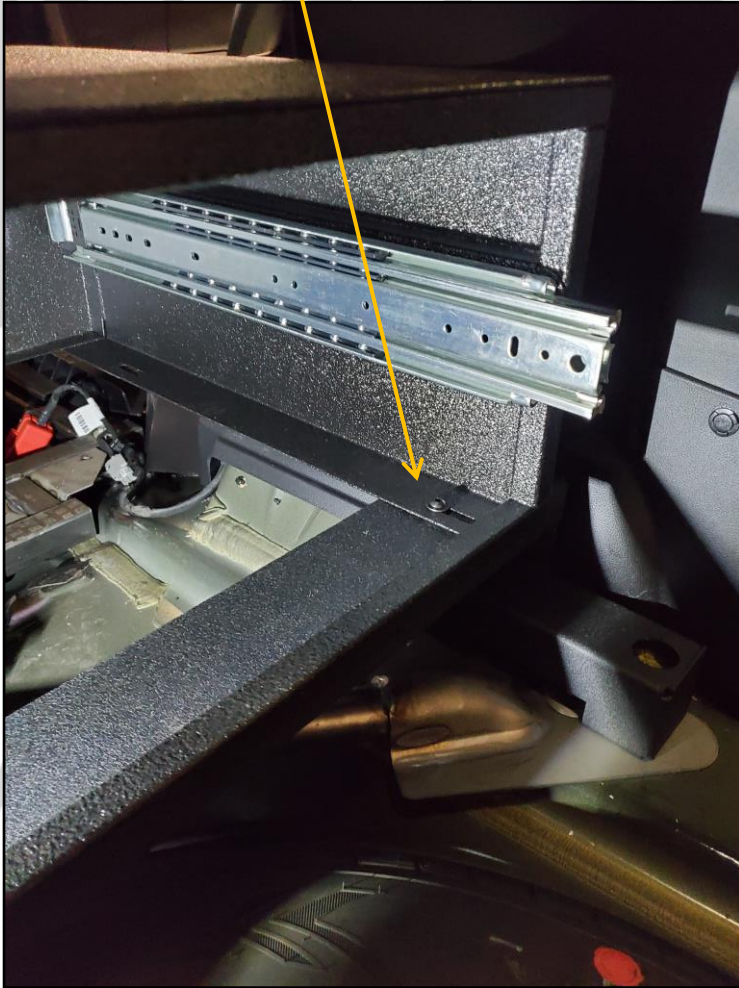
AT THIS TIME THE REAR CARGO COVER CAN
BE REPLACED



ATTACH STRINGERS TO MOUNTING
BAR AND FRONT FEET.



REMOVE DRAWER FROM BOX
AND ATTACH BOX TO SIDE MOUNT
BAR AND FRONT FEET



REINSTALL DRAWER IN
BOX AND REPLACE
SPARE TIRE COVER
PANEL TO COMPLETE
INSTALL





1616 MARLBOROUGH AVE. RIVERSIDE, CA 92507

FOR TECHNICAL ASSISTANCE WITH INSTALLATION OR
OTHER QUESTIONS, PLEASE CALL (951) 222-2270

OR EMAIL SUPPORT@IDSMP.COM

Thank you for your business!